



# OBERDORFER PUMPS

A Gardner Denver Product

## Bronze Pedestal External Rotary Gear Pumps

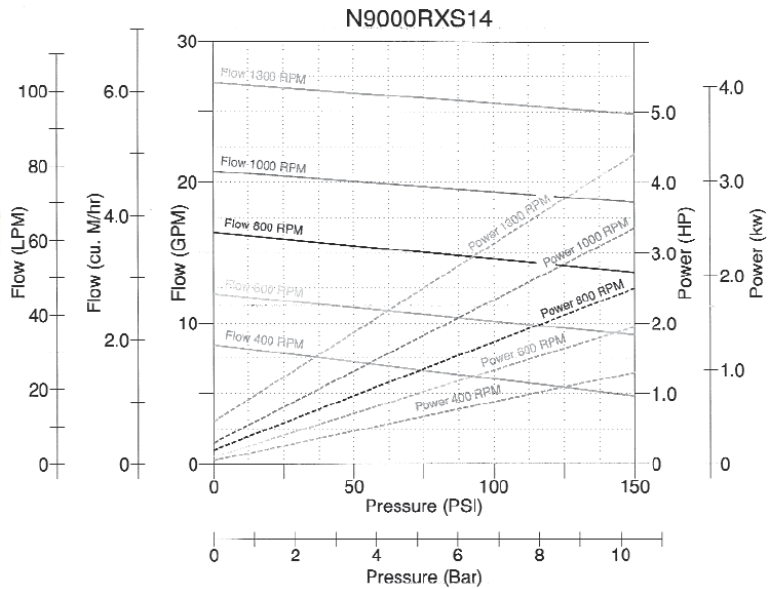
Model N9000(R)X

### Model N9000(R)X

(1 1/4" NPT ports)



#### PERFORMANCE:



1300 RPM	27 GPM
----------	--------

#### FEATURES:

- Inlet/Outlet Right Angle Porting
- Rugged Corrosion Resistant Cast Bronze Housing
- Drop-in replacement for Internal gear Pumps
- Bronze Spur Gears
- Tailored for commercial and military diesel fuel transfer
- Applications in harsh environments
- Self Lubricating Carbon Graphite Sleeve Bearings
- Stainless Steel Shafts
- Optional Integral Relief Valve
- No Gaskets
- Mechanical Seal

#### GENERAL DESCRIPTION:

This Industry-Proven bronze pedestal external gear pump in right angle port orientation replaces internal gear pumps and eliminates their inherent overhung rotor load problems. The pumps can be operated in either rotating direction and can be installed in any plane. All materials of construction are suitable for diesel fuel service. The built-in relief valve is available in multiple options; internal recirculation to suction side or external connection for return line to supply tank.

#### LIQUIDS AND TEMPERATURE:

Model	Elastomers	Temperature Range
N9000(R)XS16	NBR	-25F to +225F
N9000(R)XS14	HNBR	-40F to +300F

#### SUCTION LIFT:

Close tolerances and positive displacement action make the rotary gear pump capable of lifting fluid on the suction side as high as 20 feet. Though gear pumps are self priming, a foot valve is recommended. If possible, wet the gears with liquid to be pumped for the first dry start. Liquid retained in the system and gear chambers serves to “wet” the pump on subsequent starts.

#### RELIEF:

The pump by-pass is not intended to be a metering or flow control device. Its main purpose is to function as a pressure relief when the desired set point is exceeded. Overheating can occur within 5-10 minutes if the discharge line is completely shut off for extended periods.

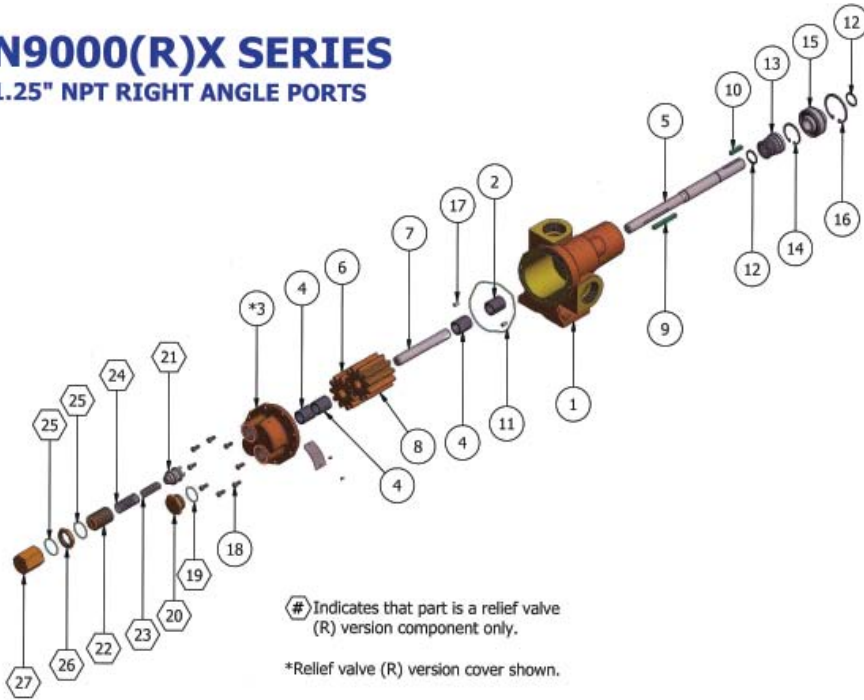
Reversing rotation reverses the “IN” and “OUT” ports and the location of the by-pass ports have to be reversed. The by-pass valve is factory set at 115 psi/1300RPM. To increase the setpoint, turn the bypass valve adjusting screw in a clockwise direction.

# Bronze Pedestal External Rotary Gear Pumps

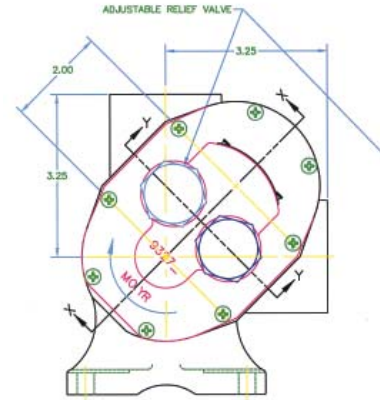
## Model N9000(R)X

### N9000(R)X SERIES

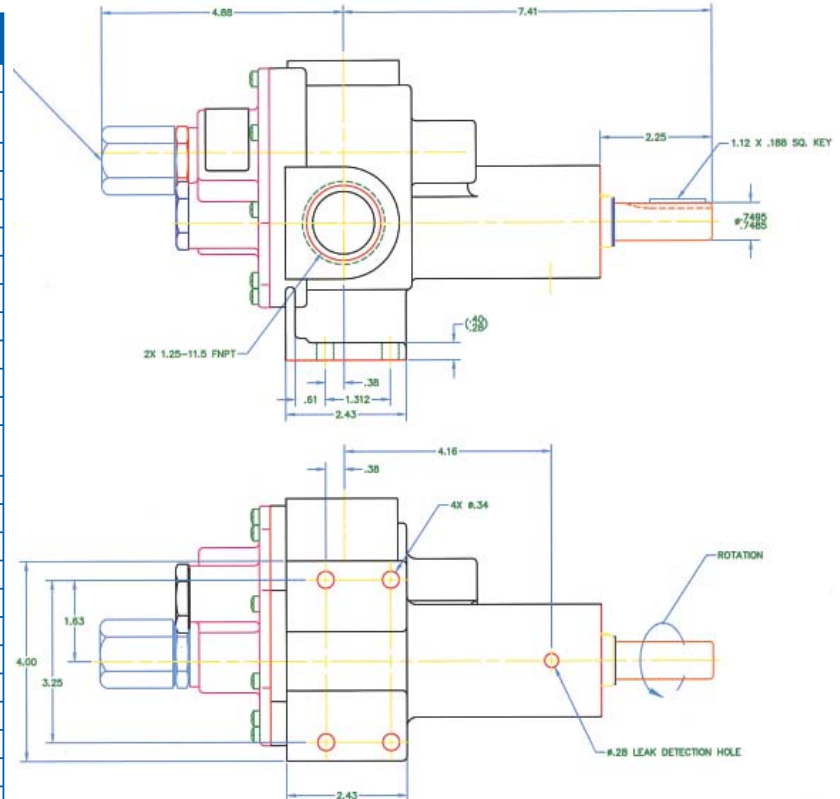
1.25" NPT RIGHT ANGLE PORTS



### Dimensions



Item No.	Description	Qty.	N9000XS14	N9000RXS14	N9000XS16	N9000RXS16
1	Body	1	3265-1			
2	Bearing Grooved	1	3283			
3	Cover	1	9326NN5N	9327NN5B	9326NN5N	9327NN5B
4	Bearing	3	5091			
5	Drive Shaft	1	3295			
6	Drive Gear	1	3298			
7	Idle Shaft	1	3296			
8	Idle Gear	1	3267			
9	Key	1	3285			
10	Key	1	6567			
11	O-Ring	1	3286-045		9797-045	
12	Ret. Ring Shaft	2	3281			
13	Mech. Seal Assy	1	33298		32005	
14	Ret. Ring Bore	1	5464			
15	Ball Bearing	1	3284			
16	Ret. Ring Bore	1	7345			
17	Dowel Pin	2	8885			
18	Screw	8	5385			
19	O-Ring	1	3286-019		9797-019	
20	Plug Nut	1	5278R		5278R	
21	Poppet	1	3292		3292	
22	Adjust. Screw	1	5275		5275	
23	Spring	1	6302		6302	
24	Spring	1	5277		5277	
25	O-Ring	2	3286-022		9797-022	
26	Locknut	1	1642D		1642D	
27	Nut, Bypass	1	5276		5276	



## OBARDORFER PUMPS

*A Gardner Denver Product*

5900 Firestone Drive, Syracuse, NY 13206

Phone: (800) 448-1668; (315) 437-0361 • Fax: (315) 463-9561

Visit [www.oberdorfer-pumps.com](http://www.oberdorfer-pumps.com) to find in-depth descriptions of the world's leading high-quality, dependable pumps.

Due to ongoing product improvements, data shown here is subject to change without notice. Contact Oberdorfer Pumps for latest specifications.

N9000X.031412