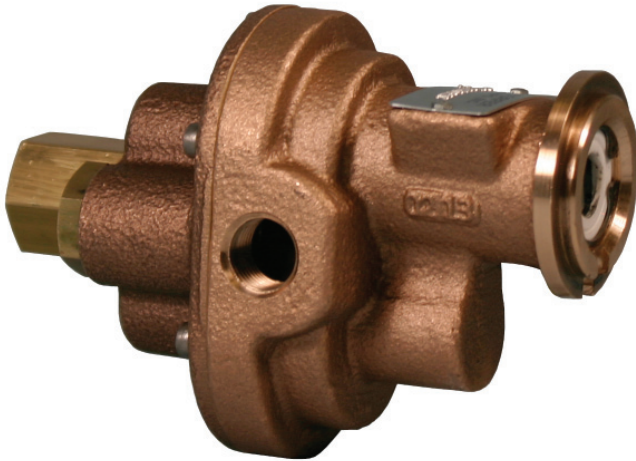




### Ports: 3/8" FNPT



#### DESCRIPTION:

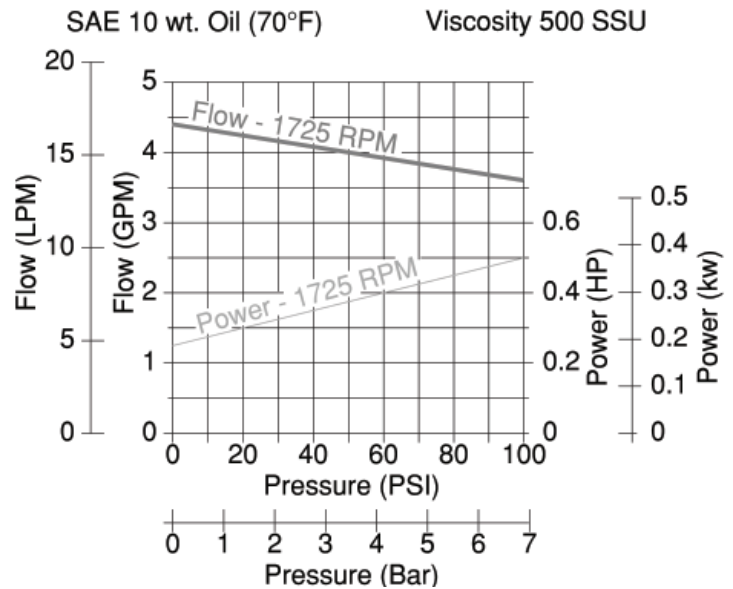
Drop in replacement for model GCBN3V . Can also be considered as replacement for model 4KHP9. These self-priming, positive displacement, external rotary gear carbonator pumps are ideal for a wide range of commercial, industrial, marine, and agricultural applications.

**Uses:** For use with particulate free and non-abrasive fluids compatible with bronze and stainless steel. Suitable for oils and other lubricating fluids and for intermittent duty when handling water based fluids in the 4-10 pH range.

- Flows to 4.4 GPM
- Max. RPM: 1725
- Max. PSI: 100
- Suction lift to 3.6 ft.\*\*
- Maximum viscosity of 500 SSU at 1725 RPM (max. input torque of 45 in. lbs.)
- Housing Gasket – Viton®\* Oring
- Construction – Bronze Housing, Bronze Spur Gears, Stainless Shafts
- Shaft Seals – BUNA Mechanical with carbon and ceramic wear faces
- Bearings – Carbon Graphite
- Temperature range: -40° F to 225° F.
- Maximum working pressure: 150 PSI
- Internal Bypass Relief Valve
- Rotation – Factory configured for CCWLE Motors\*\*\*

\* VITON® is a trademark of DuPont Dow Elastomers. VITON® or equivalent FKM may be used. Teflon® is a registered trademark of DuPont. Teflon® or equivalent PTFE will be used.

#### PERFORMANCE:



#### MOUNTING AND DRIVE ARRANGEMENT:

Intended for close-coupled mounting to NEMA 48 Carbonator Mount footed motors using clamp and T coupling. Pump can be mounted in any orientation relative to the motor base. For vertical installations, mount pump below motor. Complete pump / motor units are available.

#### ROTATION AND RELIEF VALVE:

The relief valve is not intended to be a metering or flow control device. Its main purpose is to function as a discharge pressure relief when the spring tension is exceeded by the discharge pressure. Overheating can occur within 5-10 minutes if the discharge line is completely shut off for extended periods.

Unless otherwise specified, the pump motor unit is supplied by the factory for shaft rotation clockwise from shaft end. Reversing the motor rotation will reverse the “in” and “out” ports and also requires changing the relief valve location. The relief valve is always on the discharge side in this pump series. The factory pressure setting is 50 PSIG. To increase pressure, turn the relief valve adjusting screw in a clockwise direction.

To reverse single phase motors, find instructions on the inside of the junction box cover or on the name plate of the motor.

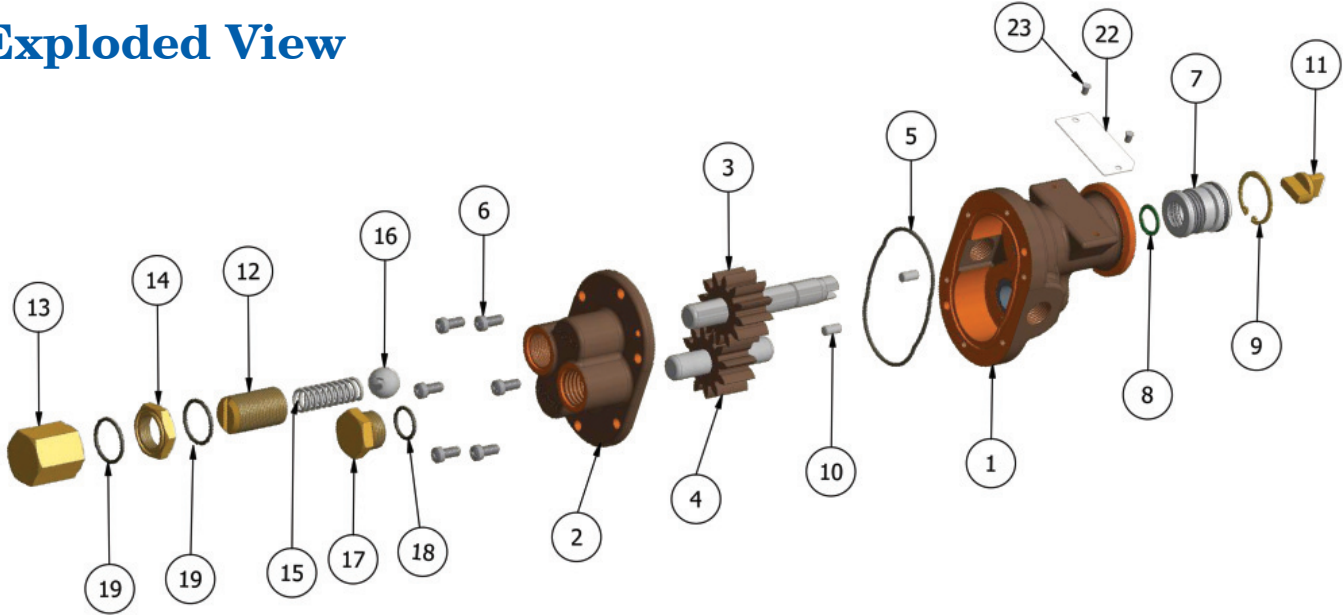
\*\* Suction lift requires wetted gears and primed pump condition

\*\*\* To change shaft rotation direction and relief valve orientation, rotate cover assembly 180 degrees.

# Bronze Rotary Gear Pumps Carbonator Motor Mounted

## CB62060GRC

### Exploded View



### Parts List

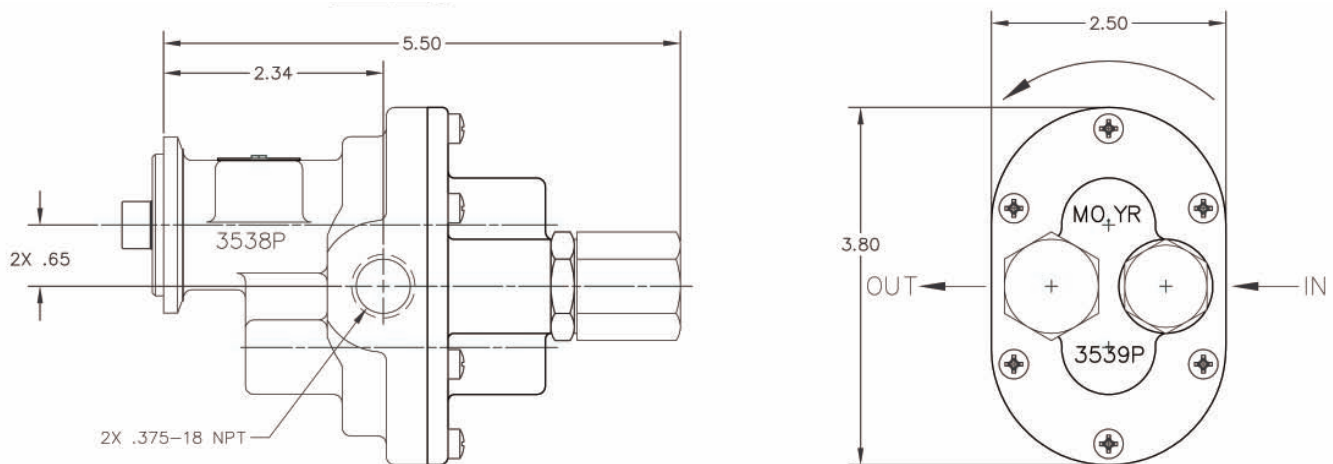
	1	2	3*	4*	5*	6	7*	8	9	10	11*	12
	Body w/ Brg's Sub Assy	Cover w/ Brg's Sub Assy	Drive Gear Assy	Idle Gear Assy	O-Ring	Screw	Mech Seal	Snap Ring	Snap Ring	Dowel Pin	Coupler	Adjusting Screw
Model	Qty. 1	Qty. 1	Qty. 1	Qty. 1	Qty. 1	Qty. 6	Qty. 1	Qty. 1	Qty. 1	Qty. 2	Qty. 1	Qty. 4
CB62060GRC	3538PC4N-C	3539PN5B-C	733403	32111	9797-037	5385	32584	5373	7639	8885	2353	5237

	13	14	15	16	17	18	19	20**	21**	22	23	Repair Kit
	Nut, Bypass	Lock Nut	Spring Bypass	Ball	Plug Nut	O-Ring	O-Ring	V-Band Clamp	Plastic Bag	Tag	Tag Screw	
Model	Qty. 2	Qty. 1	Qty. 1	Qty. 1	Qty. 1	Qty. 1	Qty. 2	Qty. 1	Qty. 1	Qty. 1	Qty. 2	
CB62060GRC	5239	5240D	1840	5238	1838	9797-015	9797-019	8840	9164	9344	9345	TBD

\* Repair kit contains these items. \*\*Items not depicted in assembly drawing.

### Dimensions



## OBARDORFER PUMPS

*A Gardner Denver Product*

5900 Firestone Drive, Syracuse, NY 13206

Phone: (800) 448-1668; (315) 437-0361 • Fax: (315) 463-9561

Visit [www.oberdorfer-pumps.com](http://www.oberdorfer-pumps.com) to find in-depth descriptions of the world's leading high-quality, dependable pumps.

Due to ongoing product improvements, data shown here is subject to change without notice. Contact Oberdorfer Pumps for latest specifications.

CB62060GRC.041013