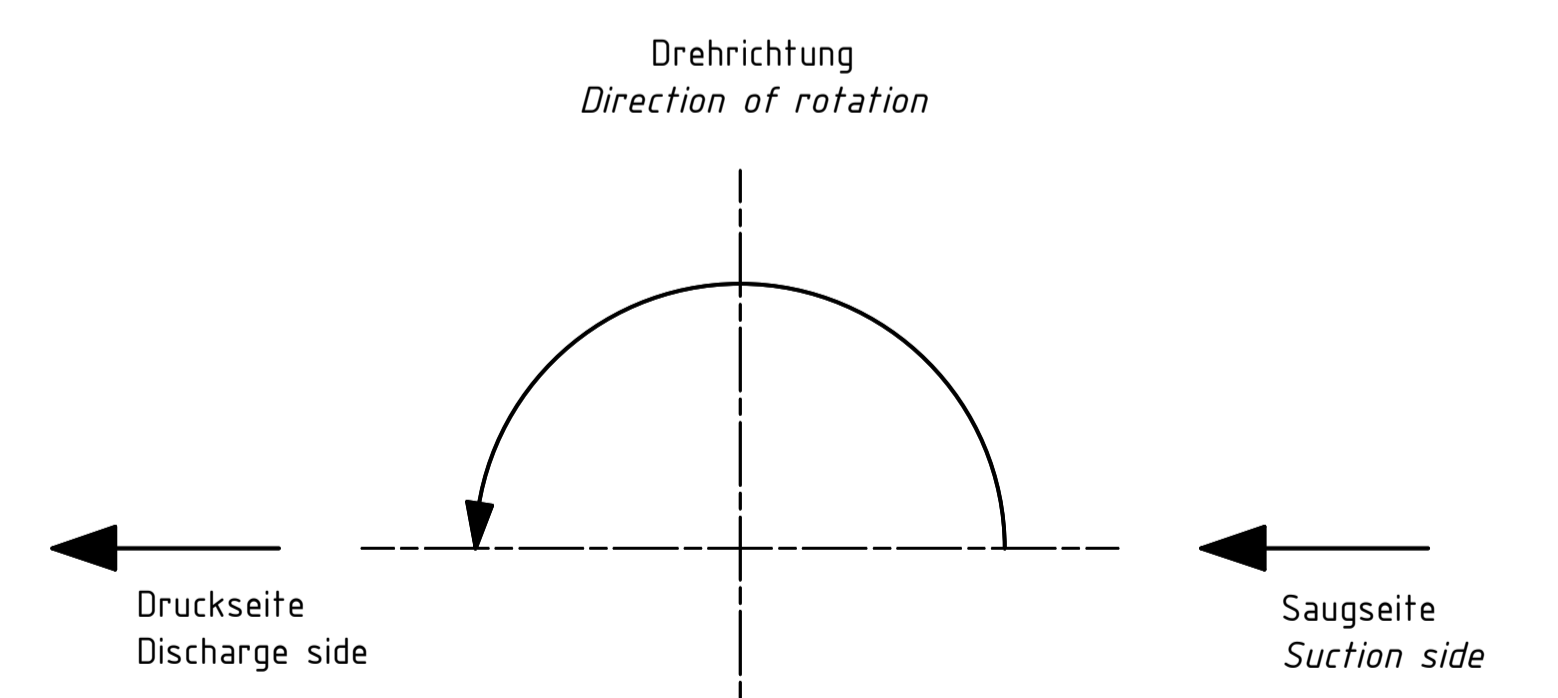
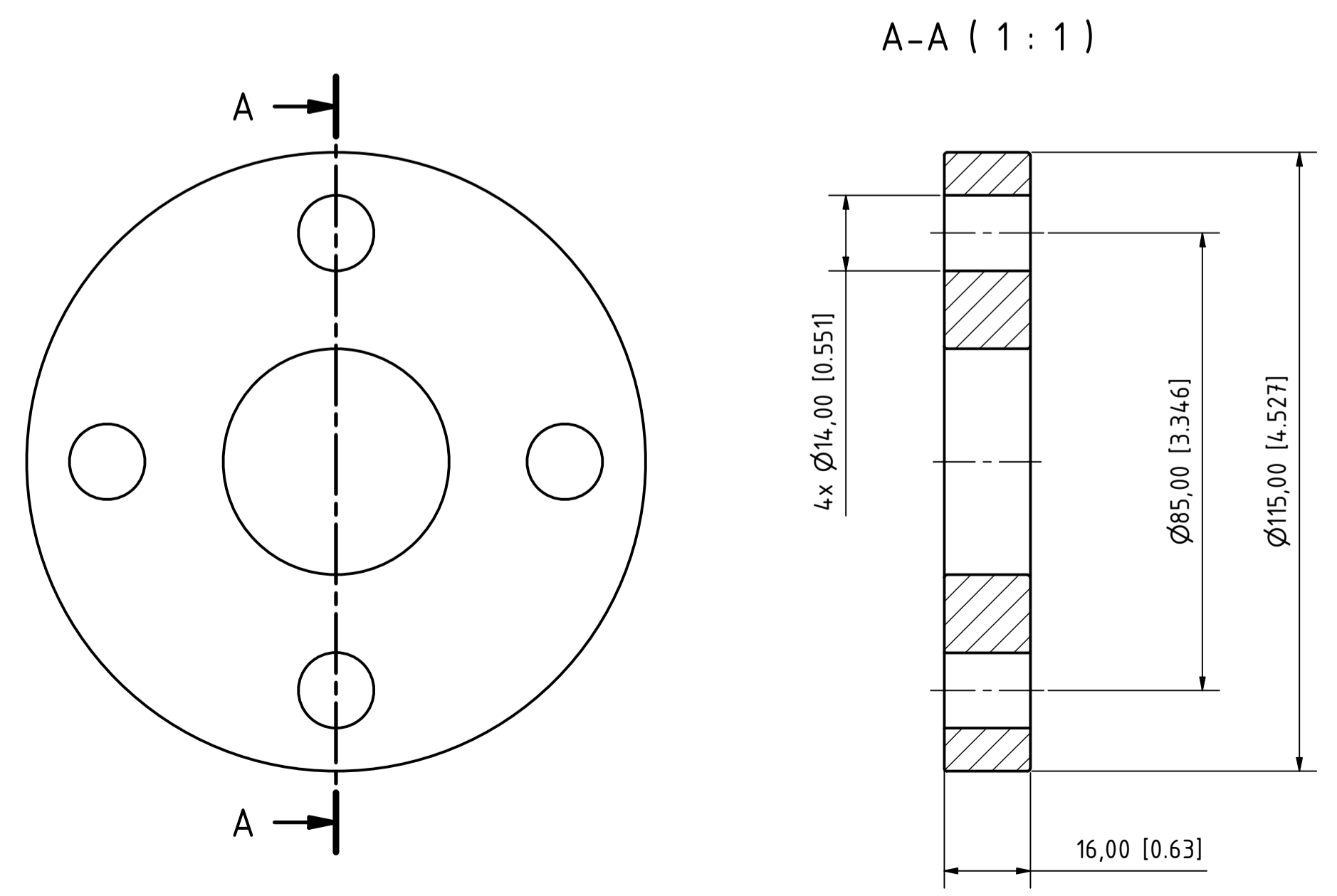


- DIMENSIONS
mm [Inch]
* may change with different motor manufacturer

- DRIVE
Flame proof, three phase TEFC electric motor acc. to IEC Standards
Manufacturer: HEW
Size: IEC71 B3 / B5
Ignition protection: II 2G, Ex db (eb) IIC T4 Gb

- CONNECTIONS DN_s/d
Lap Joint Flange DN25 PN10/16 - PPST
Suction side / discharge side depends on direction of rotation.
Pump is reversible.



Alle Angaben unverbindlich, technische Änderungen vorbehalten! Technical data not binding and subject to change!
Copyright MARCH PUMPEN GmbH & Co.KG 2022

	MARCH PUMPEN GmbH & Co.KG Rathenaustraße 2 D-30704 Göttingen info@march-pumpen.com www.march-pumpen.com		 1:1	TEF-MAG 0201 P_F DN25-200-V HEW Ex ABMESSUNGEN DIMENSIONS
	Gezeichnet Konstruiert Name	Datum 15.02.2022 Läch		
Status	Änderungen	Datum	Name	