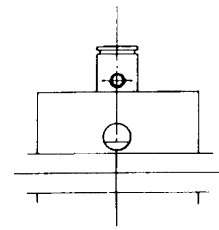
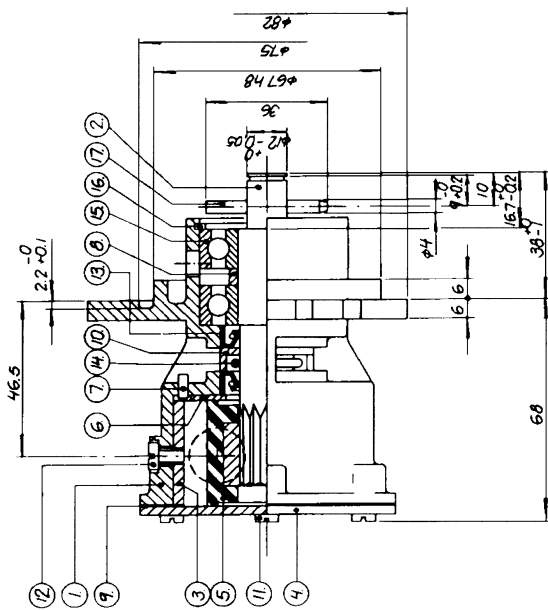
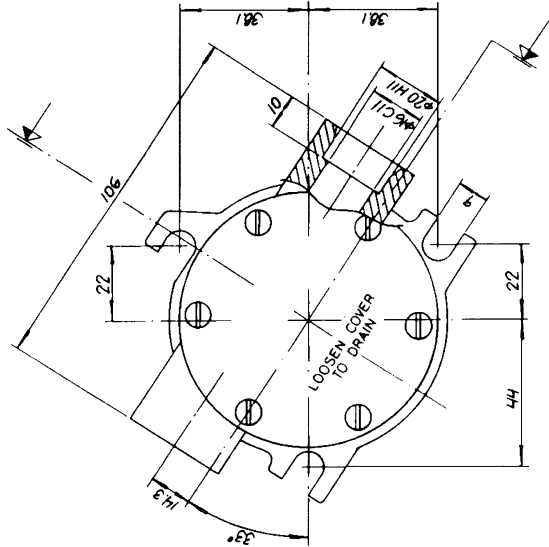


article number 10-24268 pump F5B-9

Pump No Pump Nr.	Pump type Pumptyp	Cam Thickets Tockljet	No NC	Screw Skruv	Impeller (5)	Endcover (4)	Mark on endcover Märkes på lock	Packing Gasket (9)
10-24268-1	F5B-9	1/1	4.9	01-42397	05-04-117	01-45599		01-42401
10-24268-2	F5B-9	1/2	3.1	01-45014	05-04-175			01-45933
10-24268-3	F5B-9	1/1	4.9	01-42397	05-04-117	F5B-9 * 10-24268-4 * mon.year * week		01-42401
10-24268-4	F5B-9	1/1	3.1	01-45014	05-04-175	F5B-902 * 10-24268-5 * mon.year * week		
10-24268-5	F5B-902	1/2	3.1	01-45014	05-04-175			



Part No	Part	Description	Material	Comments	Drawn by
17	1	Spiff Pin	Stainless		05-03-524
16	1	Spring Retaining ring	Stainless		05-34-100
15	2	Roller Ballbearing	Steel		05-06-724
14	1	O-ring	EPDM		05-06-501
13	2	Locking Lipsteel	Steel		05-29-105
12	1	Screw	Steel		05-04-163
11	6	Screw	Steel		01-45181
10	1	Distancing Spacer	Steel		See table
9	1	Packing Gasket	Carbon		See table
8	1	Distancing Spacer	Steel		01-45181
7	1	Spiff Pin	Stainless		01-22400
6	1	Impeller	Cast Iron		01-42499
5	1	Lock Endcover	Cast Iron		See table
4	1	Cam	Steel		See table
3	1	Cam	Steel		01-45821
2	1	Impeller	Cast Iron		01-45821
1	1	Pump Body	Cast Iron		01-24269

10-24268-5	10-24268-5	10-24268-5	10-24268-5	10-24268-5
10-24268-5	10-24268-5	10-24268-5	10-24268-5	10-24268-5
10-24268-5	10-24268-5	10-24268-5	10-24268-5	10-24268-5
10-24268-5	10-24268-5	10-24268-5	10-24268-5	10-24268-5
10-24268-5	10-24268-5	10-24268-5	10-24268-5	10-24268-5