

Insist on genuine Jabco parts, made only by the original and world's leading manufacturer of self-priming flexible neoprene impeller pumps.

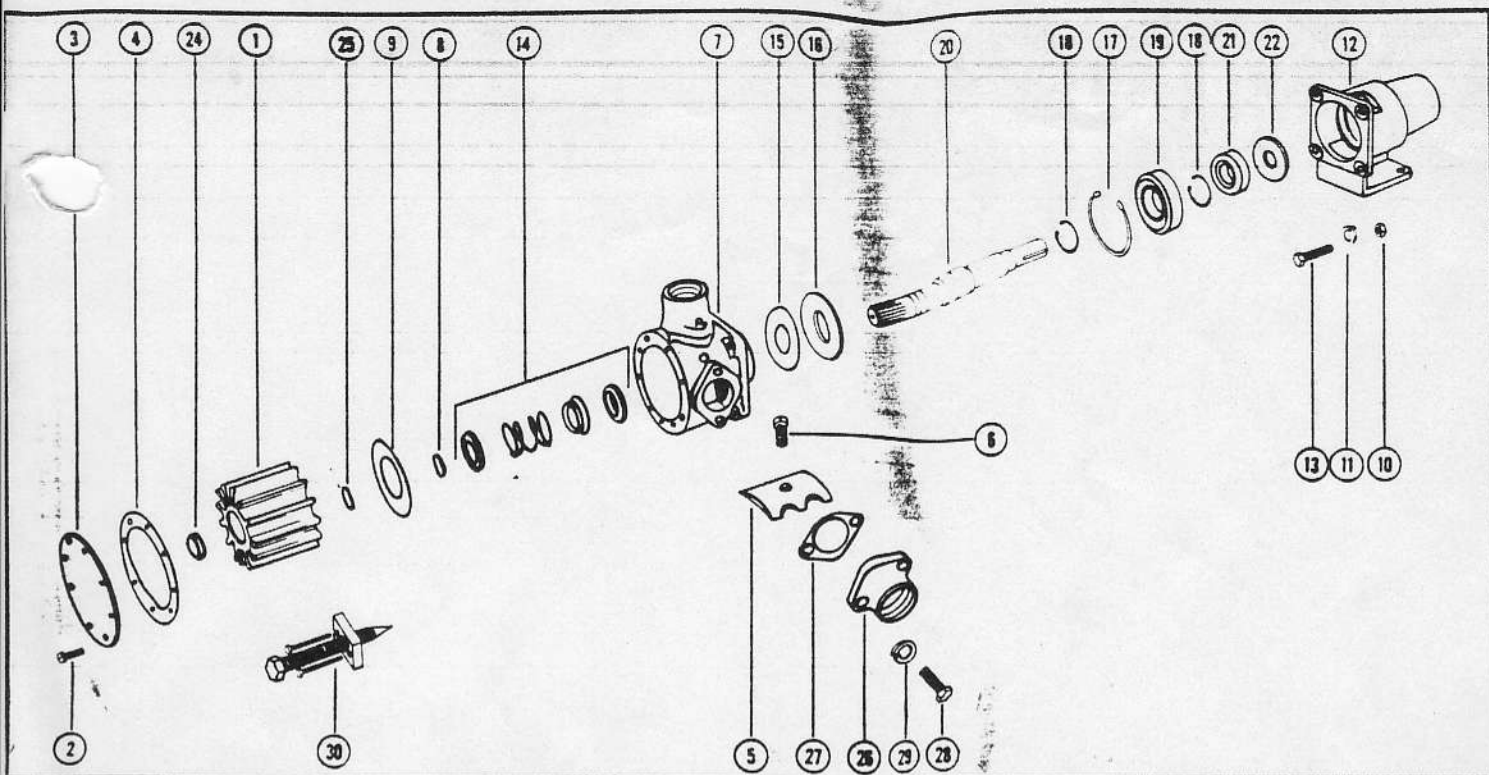
PARTS LIST			
Key	Description	Qty	Part No.
1	Impeller Model 9440, -01, -21, -200	1	2999
2	Spline Plug	1	4239
3	Body	1	9444
4	Retaining Ring	1	SP1700-143
5	O' Ring	1	SP2000-54
6	Bearing Housing	1	3208
7	Key	1	9214
8	Bearing Seal	1	SP2700-58
9	Ball Bearing	1	SP2800-15
10	Shaft	1	3207
11	Retaining Ring	1	SP1700-196
12	Ball Bearing	1	SP2800-16
13	Retaining Ring	1	SP1700-196
14	Retaining Ring	1	SP1701-433
15	Bearing Seal	1	SP2700-59
16	Slinger	1	3212
17	Seal Assembly comprising:	1	9309
	1 Seal Seat	1	9318
	2 Seal Seat Ring	1	9472
	3 Carbon Ring	1	9473
	4 Spring	1	9478
	5 Drive Sleeve	1	9477
	6 Ferrule	1	9474
	7 Truss Ring	1	9476
	8 Drive Ring	1	9471
	9 Bellows	1	9475
	10 Locking Rings	1	9479
18	Hexagon Bolts	4	SP1095-29
19	Lock Washers	4	SP1608-02
20	Hexagon Nuts	4	SP1085-15
21	Dowel Pin	1	2575

Key	Description	Qty	Part No.
22	Screws	1	SP1006-03
23	Cam	1	9446
24	Gasket	1	3209
25	End Cover Screws	8	SP1006-05
26	End Cover	1	9445, -01, -21, etc
27	Wearplate	1	9316
28	Port Flange:		
	Models 9440, -01	2	3218-01
	Models 9440-21	2	3218-21
	Models 9440, -200	1	9443
29	Hexagon Bolt	4	SP1095-30
30	Lock Washers	4	SP1608-04
31	Gasket	2	3219

SERVICE KIT	
Pump model number	Service kit number
9440	SK207
9440-01	SK207
9440-21	SK207
9440-200	SK207

Service kit includes:  
 Impeller  
 Gasket  
 O' Ring  
 Seal Assembly  
 End Cover Screws





### PARTS LIST

KEY	PART NUMBER	DESCRIPTION	QTY. REQ.	KEY	PART NUMBER	DESCRIPTION	QTY. REQ.
1	†2999-0001*	Impeller	1	17	18727-0000	Retaining Ring (Inner Brg. to Pedestal)	1
2	91006-0050	Screws (End Cover)	8	18	18709-0000	Retaining Ring (Brg.-to-Shaft)	2
3	12069-0000	End Cover	1	19	92600-0160	Ball Bearing (Inner)	1
4	3209-0000*	Gasket	1	20	3207-0000	Shaft	1
5	3210-0000	Cam	1	21	92600-0150	Ball Bearing (Outer)	1
6	91006-0030	Screw (Cam)	1	22	3213-0000	Bearing Seal	1
7	3204-0000	Body	1	23	9214-0000	Key	1
8	18708-0000*	Retaining Ring (Seal)	1	24	†4239-0000	Spline Seal	1
9	3211-0000	Wearplate	1	25	†92000-0540*	O - Ring	1
10		Hex Nut 1/2 - 13 C.P. St.	4			Port Flange Assembly	
11		Lock Washer 1/2 C.P. St.	4			Consists of:	
12	3206-0000	Bearing Housing (Pedestal)	1	26	3218-0010	Port Flange (2" NPT)	2
13		Hex Head Bolt (Pedestal to Body) 1/4 - 20 x 1-1/8 C.P. St.	4	27	3219-0000	Gasket	2
14	3222-0000*	Seal Assembly	1	28		Hex Head Bolt	4
15	3212-0000	Slinger	1	29		7/16 - 14 x 1-1/4 Br.	
16	3214-0000	Bearing Seal (Inner)	1	30	1019-0000	Lock Washer 7/16 C.P. St.	4
					90029-0001	Impeller Puller	1
						Service Kit (Not Shown)	

ts Contained in Service Kit † Parts included with Impeller