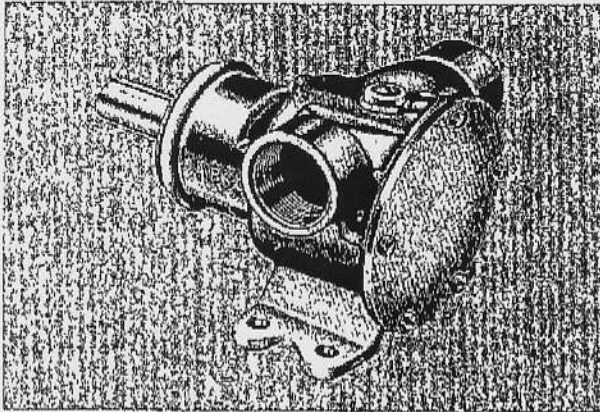


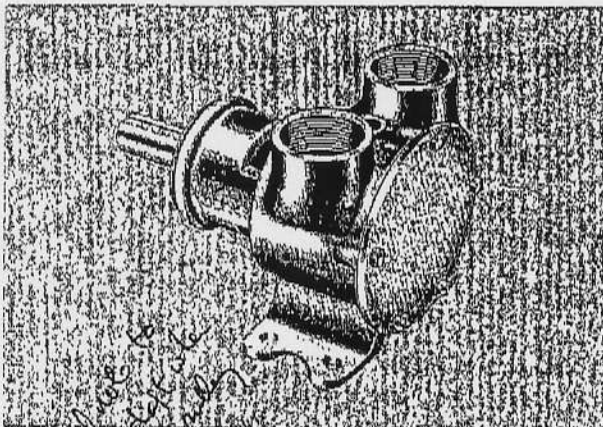
**JABSCO® PUMPS**

**MODEL: 6400-SERIES  
& 7420-SERIES**

*Product Data*



6400-SERIES



7420-SERIES

*Added note to support shaft on pulley*

**DESIGN FEATURES**

Body	Bronze Construction
Impeller	Jabco Neoprene Compound
Shaft	Bronze
Wear Plate	Replaceable
Shaft Seal	Carbon-Face Rotary Type with Replaceable Seal Seat
Bearing	Prelubricated Double Row Ball Bearing
Ports	1 1/4" NPT
Weight	10 1/2 lbs. (approximately) (4.8 KGS)

MODEL NO.	DESCRIPTION
6400-0001	1 1/4" Bronze, Ball Bearing Pump Plastic Cam, Neoprene Impeller with Plastic Insert.
6400-0004	1 1/4" Bronze, Ball Bearing Pump Brass Cam, Neoprene Impeller with Brass Insert.
7420-0001	1 1/4" Bronze, Ball Bearing Pump Plastic Cam, Neoprene Impeller with Plastic Insert.
7420-0004	1 1/4" Bronze, Ball Bearing Pump Brass Cam, Neoprene Impeller with Brass Insert.

**APPLICATIONS**

**MARINE:** Pumping bilges, Wash down, Engine Cooling.  
**INDUSTRIAL:** Circulating and Transferring liquids; Velocity-mixing; Transferring soap, liquors, pastes, glues, glycerine, lotions and brine. **FARM:** Pumping water for stock and poultry houses and Booster Pumping.  
**PLUMBING & HOME:** Pumping out flooded basements, cesspools, sumps and many other uses.

**OPERATING INSTRUCTIONS**

- INSTALLATION** — Pump may be mounted in any position. The rotation of the pump shaft determines the location of the pump's intake and discharge ports, (refer to dimensional drawing). Before installing, turn the pump shaft in the direction of the operating rotation.
- DRIVE** — Belt or Direct with flexible coupling.  
**BELT DRIVE** — Overtight belt load will reduce bearing life.  
**DIRECT DRIVE** — Clearance should be left between drive shaft and pump shaft when installing coupling. Always mount and align pump and drive shaft before tightening the coupling set screw.
- SPEEDS** — 100 RPM to the maximum shown in the performance table. For longer pump life, operate at lowest possible speeds.
- SELF-PRIMING** — Primes at low or high speeds. For vertical dry suction lift of 10 feet, a minimum of 800 RPM is required. Pump will produce suction lifts up to 22 feet when wetted. **BE SURE SUCTION LINES ARE AIR TIGHT.**
- RUNNING DRY** — Unit depends on liquid pumped for lubrication. **DO NOT RUN DRY** for more than 30 seconds. Lack of liquid will burn the impeller.

**JABSCO PRODUCTS ITT**

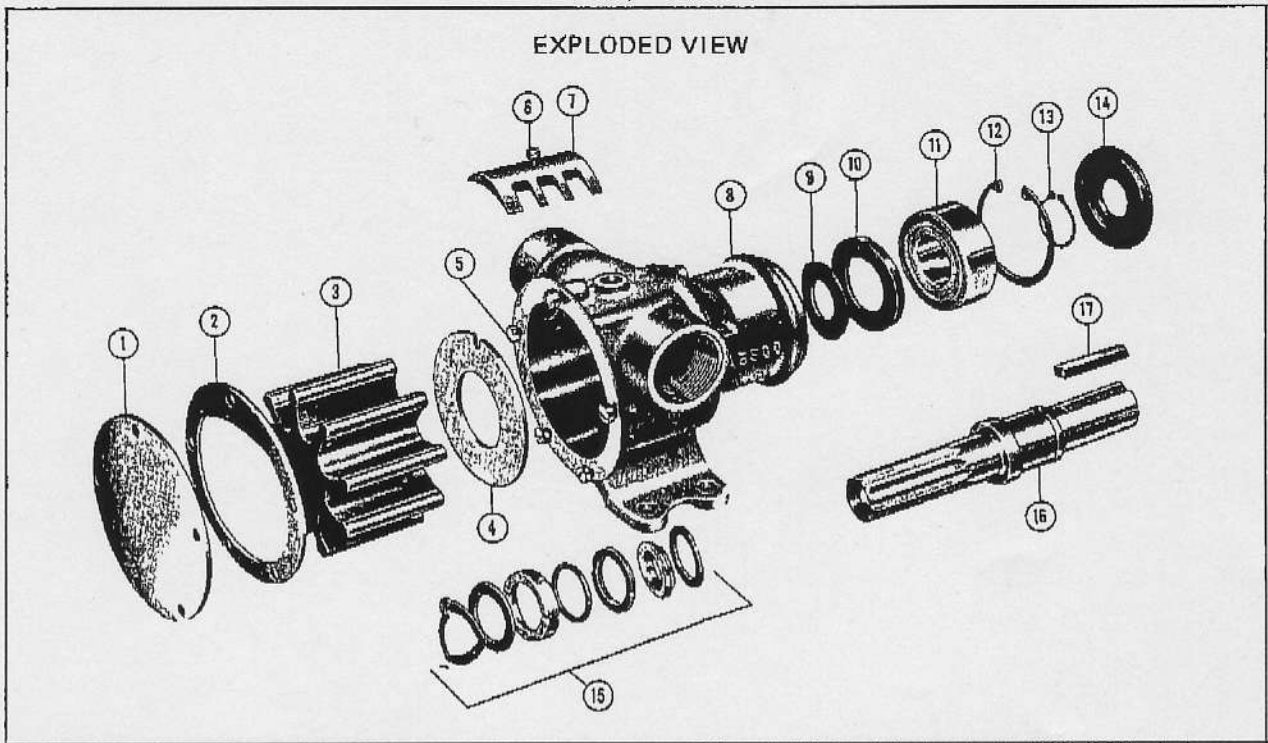
Marine and Recreation Components Division  
 International Telephone and Telegraph Corporation  
 1485 Dale Way, Costa Mesa, California 92626

Telephone: (714) 545-8251

Form 43000-0011 Rev. 11/79

MODELS: 6400-SERIES & 7420-SERIES





PARTS LIST

Model ~~6400-0001~~ Model 6400-0004  
 Model ~~7420-0001~~ Model 7420-0004

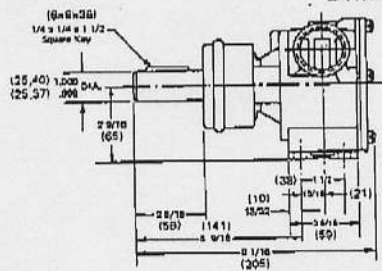
Key	Description	Qty. Req.	Part Number	Part Number
1	End Cover	1	12062-0000	12062-0000
2	*Gasket (Standard) (Optional) for use with 1/2 cam	1	816-0000	816-0000
3	Impeller* (St'd) Neoprene † (Opt'l) Nitrile (Opt'l) High Pressure (Opt'l) Natural Rubber	1	2553-0000 836-0001 836-0003 807-0001 836-0008	2553-0000 836-0001 836-0003 --- ---
4	Wearplate	1	2574-0000	2574-0000
5	Screw, End Cover	1	91005-0040	91005-0040
6	Screw, Cam (Opt'l) for use with 1/2 cam	1	91005-0040 91005-0050	91005-0040 91005-0050
7	Cam (Opt'l) 1/2 thickness cam	1	834-0001 2551-0000	834-0001 2551-0000
8	Body, Sub Ass'y (6400) Body, Sub Ass'y (7420)	1 1	6404-0000 7424-0000	6404-0000 7424-0000
9	Slinger	1	3181-0000	3181-0000
10	Bearing Seal (inner)	1	817-0000	817-0000
11	Ball Bearing	1	92600-0040	92600-0040
12	Retaining Ring (Brg to Body)	1	91700-2460	91700-2460
13	Retaining Ring (Brg to Shaft)	1	91700-2450	91700-2450
14	Bearing Seal (outer)	1	818-0000	818-0000
15	*Seal Assembly	1	6407-0010	6407-0010
16	Shaft	1	824-0000	824-0000
17	Key	1	9214-0000	9214-0000
	Service Kit		90062-0001	90062-0001 90062-0003

\*Parts Included in Service Kit 90062-0001  
 † " " " " " 90062-0003

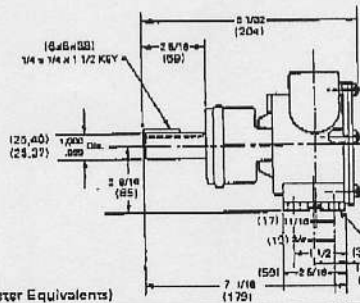
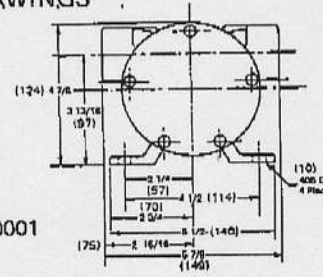
	TOTAL HD.		500 RPM		1160 RPM		1450 RPM		1750 RPM		2100 RPM		2450 RPM		
	P.S.I. (kg/sq cm)	Ft. of Water (meter)	GPM (L/min)	HP	GPM (L/min)	HP	GPM (L/min)	HP	GPM (L/min)	HP	GPM (L/min)	HP	GPM (L/min)	HP	
Standard Pressure	4.3 (0.3)	10 (3.0)	18 (68.1)	1/2	41 (155.2)	1	51 (193.0)	1 1/2	62 (234.7)	1 1/2	72 (272.5)	3	83 (312.5)	4	
	8.7 (0.6)	20 (6.1)	17 (64.4)	1/2	40 (151.4)	1	50 (189.3)	1 1/2	60 (227.1)	1 1/2	70 (265.0)	3	81 (304.5)	4	
	17.3 (1.2)	40 (12.2)	14 (53.0)	1/2	37 (140.1)	1 1/2	46 (174.1)	1 1/2	55 (208.2)	2	66 (249.8)	3	77 (288.7)	4	
	26.0 (1.8)	60 (18.3)			32 (121.1)	1 1/2	42 (159.0)	2	50 (189.3)	2	60 (227.1)	3	70 (265.0)	4	
	34.8 (2.4)	80 (24.4)					35 (132.5)	2	44 (166.5)	2	53 (200.5)	3	63 (238.5)	4	
Half Thickness Cam	4.3 (0.3)	10 (3.0)	11 (41.6)	1/2	26 (98.4)	1/2	31 (117.3)	1 1/2	37 (140.1)	1 1/2	46 (174.1)	1 1/2	56 (212.0)	2	
	8.7 (0.6)	20 (6.1)	9.5 (36.0)	1/2	24 (90.8)	1	29 (109.8)	1 1/2	35 (132.5)	1 1/2	44 (166.5)	2	52 (196.8)	3	
	17.3 (1.2)	40 (12.2)	5.5 (20.8)	1/2	19 (71.9)	1	23 (87.1)	1 1/2	29 (109.8)	1 1/2	38 (143.8)	2	45 (170.2)	3	
	26.0 (1.8)	60 (18.3)			12 (45.4)	1 1/2	15 (56.8)	1 1/2	21 (79.5)	1 1/2	31 (117.3)	3	37 (140.1)	3	
High Pressure	8.7 (0.6)	20 (6.1)	14 (53.0)	1/2	38 (143.8)	1 1/2	47 (178.3)	1 1/2	56 (212.0)	2	66 (249.8)	3	77 (288.7)	4	
	21.6 (1.5)	50 (15.2)	12 (45.4)	1/2	34 (128.7)	1 1/2	43 (162.5)	1 1/2	52 (196.8)	2	62 (234.7)	3	73 (276.5)	4	
	34.8 (2.4)	80 (24.4)	8 (30.3)	1	30 (113.6)	2	39 (147.4)	2	48 (181.2)	2	58 (218.3)	3	69 (259.3)	4	
	47.8 (3.4)	110 (33.5)			28 (106.0)	2	37 (139.7)	2	46 (174.1)	2	56 (212.0)	3	67 (253.8)	4	

TABLE SHOWS APPROXIMATE HEAD-FLOW FOR NEW PUMP IN U.S. GALLONS PER MINUTE, WITH METRIC EQUIVALENTS  
NOTE: Progressively longer life may be expected as operating pressures and speeds are reduced. Factory Application Engineering assistance suggested for operation in light shaded area. Capacitor type motor recommended.

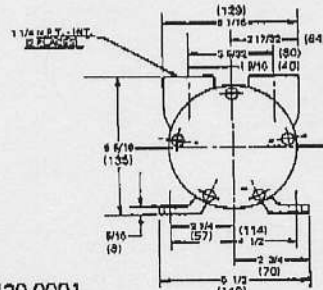
DIMENSIONAL DRAWINGS



MODEL 6400-0001



MODEL 7420-0001



JABSCO PRODUCTS **ITT**

0 50 100 150 200 250  
 FLOW IN IMPERIAL G.P.M. →  
 0 10 20 30 40 50  
 FLOW IN LITERS/MIN. →

**HEAD vs FLOW**    DATE  
 MODEL - 6400    8/9/78  
 IMP. - 836-0003  
 CAM - 834-0000  
**JABSCO PUMP COMPANY**  
**COSTA MESA, CALIFORNIA**  
 For continous duty do not  
 operate above 2/3 maximum  
 pressure capability.

↑ HEAD FEET H<sub>2</sub>O

↑ HEAD IN METERS H<sub>2</sub>O

