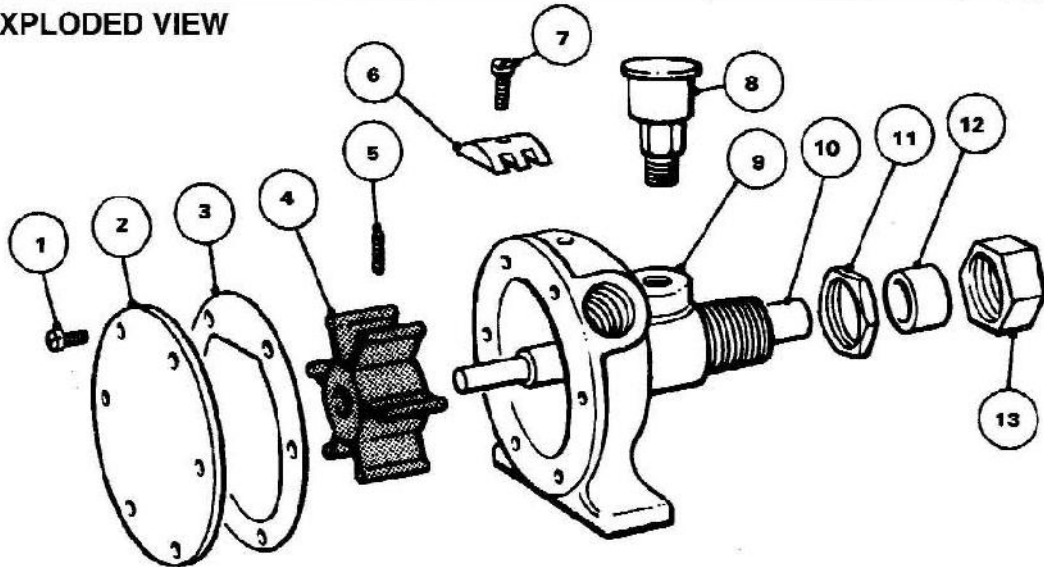


EXPLODED VIEW



PARTS LIST AL1/4-200

Key	Description	Qty	Part No
1	Endcover Screw*	6	SP1002-01
2	Endcover	1	AL6-200
3	Gasket*	1	1126
4	Impeller*	1	4528-0001B
5	Screw-Impeller to Shaft*	1	SP1009-05
6	Cam	1	AL8
7	Cam Screw	1	SP1002-02
8	Grease Cup	1	SP1503-01
9	Body	1	AL4-200
10	Shaft	1	AL10
11	Lock Nut	1	AL18
12	Packing*	1	AL22
13	Pack Nut	1	AL16

PARTS LIST 6540-200

Key	Description	Qty	Part No
1	Endcover Screw*	6	SP1002-01
2	Endcover	1	3092
3	Gasket*	1	2995-0030
4	Impeller*	1	673-0001B
5	Screw-Impeller to Shaft*	1	SP1010-06
6	Cam	1	2907-0001
7	Cam Screw	1	SP1002-02
8	Grease Cup	1	SP1503-01
9	Body	1	6544-200
10	Shaft	1	6547
11	Lock Nut	1	B18
12	Packing*	1	B22
13	Pack Nut	1	B16

MODEL AL1/4-200

Service Kit No SK1
Contains Parts marked *

Options:-

Nitric Impeller Part No 4628-0003B
1/2 Cam Part No AL8-01
1/2 Cam Screw Part No SP1002-04

MODEL 6540-200

Service Kit No SK205
Contains Parts marked *

Options:-

Nitric Impeller Part No 673-0003B
1/2 Cam Part No 2441
1/2 Cam Screw Part No SP1002-09

SERVICE INSTRUCTIONS

Dis-Assembly Inspect all parts for wear or damage and replace if necessary

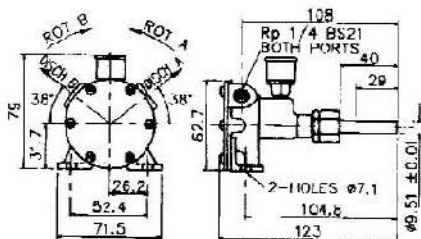
1. Remove endcover screws, endcover and gasket
2. Remove drive coupling or pulley and loosen packing nut and remove.
3. Clean and remove any burrs from the end of the shaft.
4. Remove shaft and impeller assembly from body using water pump pliers.
5. Remove impeller to shaft screw, slide impeller off shaft.
6. Loosen cam screw and remove cam, (clean off any old jointing compound).
7. From pack nut remove old packing using a small screw-driver.

Assembly

1. Coat cam screw threads and top of cam with a non setting jointing compound. Install in body.
2. Position impeller onto shaft, locate hole in impeller and then replace screw.
3. Lightly lubricate the impeller bore with a good quality water pump grease. Insert shaft and impeller assembly into pump body with a rotary motion.
4. Dip new packing in a lifting machine oil and install pack nut.
5. Replace gasket, endcover and endcover screws.
6. Replace pack nut onto shaft and "Hand Tighten" locknut. Allow for slight leakage for a short time in order to lubricate the packing until it is run-in. Readjust as necessary.

CAUTION: OVERTIGHTENING OF THE PACK NUT WILL INCREASE THE TORQUE REQUIREMENT AND MAY BURN THE PACKING OR GROOVE THE SHAFT UNDER THE PACKING.

INSTALLATION DRAWING AL 1/4-200



INSTALLATION DRAWING 6540-200

