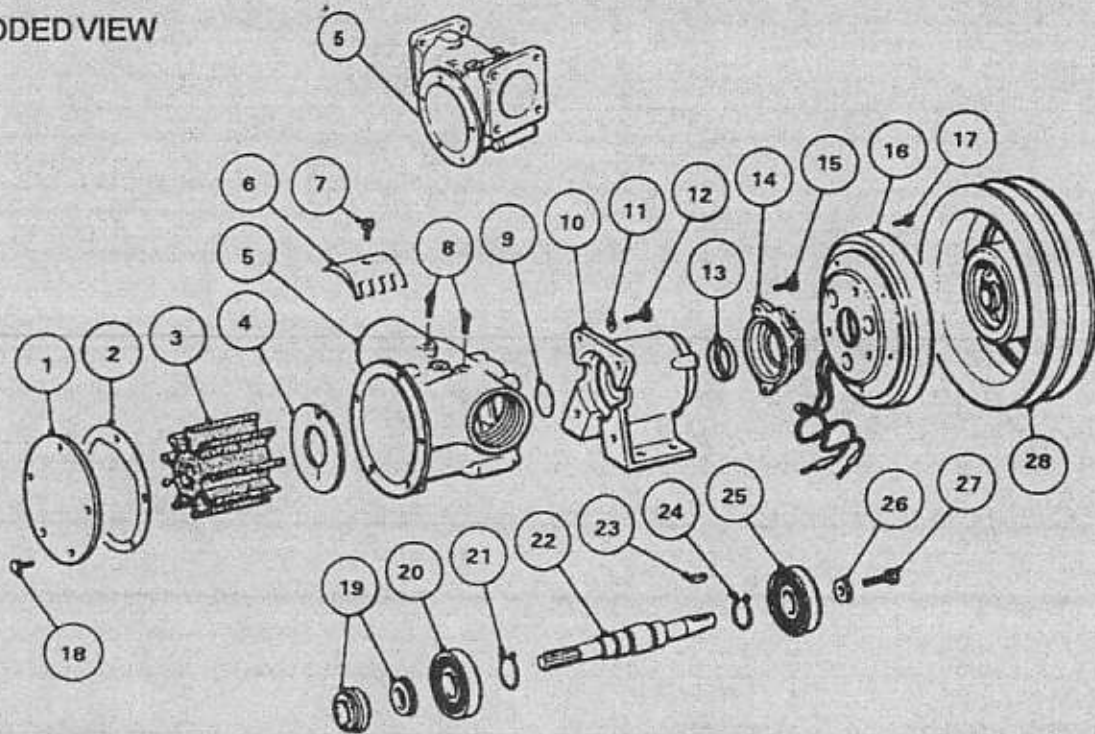




# 50220:50270 SERIES

## EXPLODED VIEW



## PARTS LIST

KEY	DESCRIPTION	QTY	50220 - SERIES	50270 -0 SERIES	50270-2 SERIES
1	Endcover	1	9336	9336	9336
2	Gasket*	1	816	816	816
3	Neoprene Impeller*	1	17935-0001	21676-0001 or 17936-0001	21676-0001 or 17936-0001
	Nitrile Impeller**	1	836-0003	21676-0003 or 6760-0003	21676-0003 or 6760-0003
4	Wear plate	1	2574	2574	2574
5	Body	1	10634-02 (Flange)	10494-01 (Flange)	50274-2000 (BSP)
6	Cam	1	834	6988	6988
7	Cam Screw	1	SP1005-04	SP1005-04	SP1005-04
8	Pipe Plug	1	SP2650-07	SP2650-07	SP2650-07
9	Slinger	1	X4020-324A	X4020-324A	X4020-324A
10	Bearing Housing	1	50273-0000	50273-0000	50273-0000
11	Washer	4	SP1602-13	SP1602-13	X3081-101C
12	Bolt	4	SP1095-28	SP1095-28	X3001-209C
13	Inner Bearing Seal	1	SP2701-54	SP2701-54	SP2701-54
14	Clutch Adaptor	1	52201-1000	52201-1000	52201-1000
15	Bolt	3	X3001-180F	X3001-180F	X3001-180F
16	Field Coil (12v)	1	SP2300-0063FC	SP2300-0063FC	SP2300-0063FC
	Field Coil (24v)	1	SP2300-0064FC	SP2300-0064FC	SP2300-0064FC
17	Screw***	3	X3001-176F	X3001-176F	X3001-176F
18	Endcover Screws *	5	SP1095-0640	SP1095-0640	X3001-176F
19	Seal Assembly *	1	21849	21849	21849
20	Bearing	1	SP2601-0458	SP2601-0458	SP2601-0458
21	Retaining Ring	1	Y5026-08	Y5026-08	Y5026-08
22	Shaft	1	50227-0000	50277-0000	50277-0000
23	Key	1	SP1401-10	SP1401-10	SP1401-10
24	Retaining Ring	1	Y5026-08	Y5026-08	Y5026-08
25	Bearing	1	SP2601-0458	SP2601-0458	SP2601-0458
26	Washer***	1	Supplied with Clutch	Supplied with Clutch	Supplied with Clutch
27	Screw***	1	Supplied with Clutch	Supplied with Clutch	Supplied with Clutch
28	Pulley (2A)	1	SP2300-0061RA	SP2300-0061RA	SP2300-0061RA
	Pulley (1B)	1	SP2300-0063RA	SP2300-0063RA	SP2300-0063RA

### 50220 - SERIES

Service Kit SK407-0011  
Service Kit SK407-0003

### 50270 - SERIES

Service Kit SK408-0011  
Service Kit SK408-0013

All Service Kits contain parts marked\*, plus \*\* in place of Neoprene Impeller.

### Port Adaptors (Optional Extra)

Series	Kit No.	Description
50220	K1-01	2" I/D Hose
	K1-200	1-1/2" BSP
	K1	1-1/2" NPT

### Port Adaptors (Optional Extra)

Series	Kit No.	Description
50270-0	K2-01	2-1/2" I/D Hose
	K2-200	2" BSP
	K2	2" NPT

\*\*\* Supplied with Key 28

Inspect all parts for wear or damage and replace if necessary.

### 50270 SERIES

#### DIS-ASSEMBLY

1. Remove end cover screws, end cover and gasket.
2. Remove impeller.
3. Loosen cam screw and remove cam.
4. Remove wearplate.
5. Remove bolt from end of shaft. Screw  $\frac{3}{8}$  UNC screw into the hub of the pulley assembly in order to draw the pulley from the pump shaft.
6. Remove 3 bolts holding the field coil onto the housing adaptor.
7. Remove field coil.
8. Remove 3 fixing bolts and rear adaptor housing from bearing housing.
9. Remove bolts from bearing housing to body and remove body from bearing housing.
10. Remove seal assembly from body.
11. Press shaft on impeller drive end to remove shaft and bearings from bearing housing.
12. Press shaft out of bearings supporting inner race of bearing. Remove retaining rings from shaft if necessary.
13. Remove inner bearing seal if it needs replacing.

#### ASSEMBLY

1. Press new seal into bearing housing with lip facing away from bearing bore.
2. Fit retaining rings onto shaft and press on bearings.
3. Grease seal area of shaft, push bearings and shaft into bearing housing by pressing on outer race of bearings.
4. Fit adaptor housing to bearing housing, secure with 3 bolts.
5. Fit field coil to adaptor using 3 bolts. Check that centre bore of field coil fits over boss on adaptor.
6. Wipe pump shaft to remove any particles and check location of key. Slide pulley assembly onto shaft, lining with key and secure with retaining bolt.
7. Place slinger on shaft.
8. Fit pump body to bearing housing securing with 4 bolts.
9. Take new seal seat (cup rubber and seal seat), lightly grease the outside edge of cup rubber and press into cavity in pump body with ceramic facing towards impeller bore.
10. Slide mechanical seal sub assembly over shaft until it engages against ceramic face of stationary seal.
11. Fit wearplate.
12. Coat cam screw threads, top side and back of cam, with non setting jointing compound and fit into body, securing with the cam screws.
13. Lightly grease impeller bore and fit impeller.
14. Fit end cover and gasket, and secure with screws.

Refer to Operating Instructions on page 17.