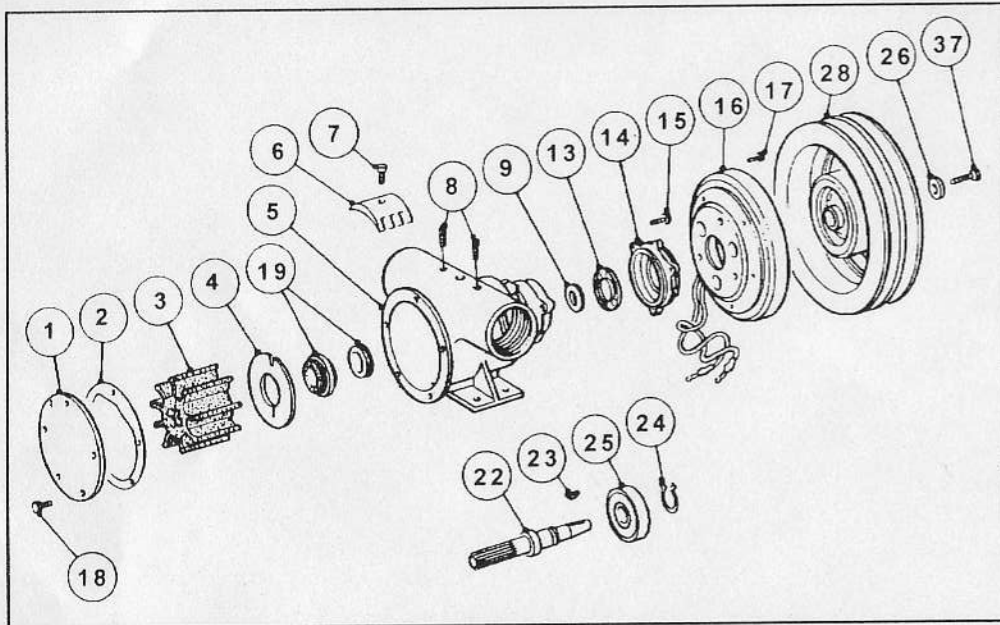
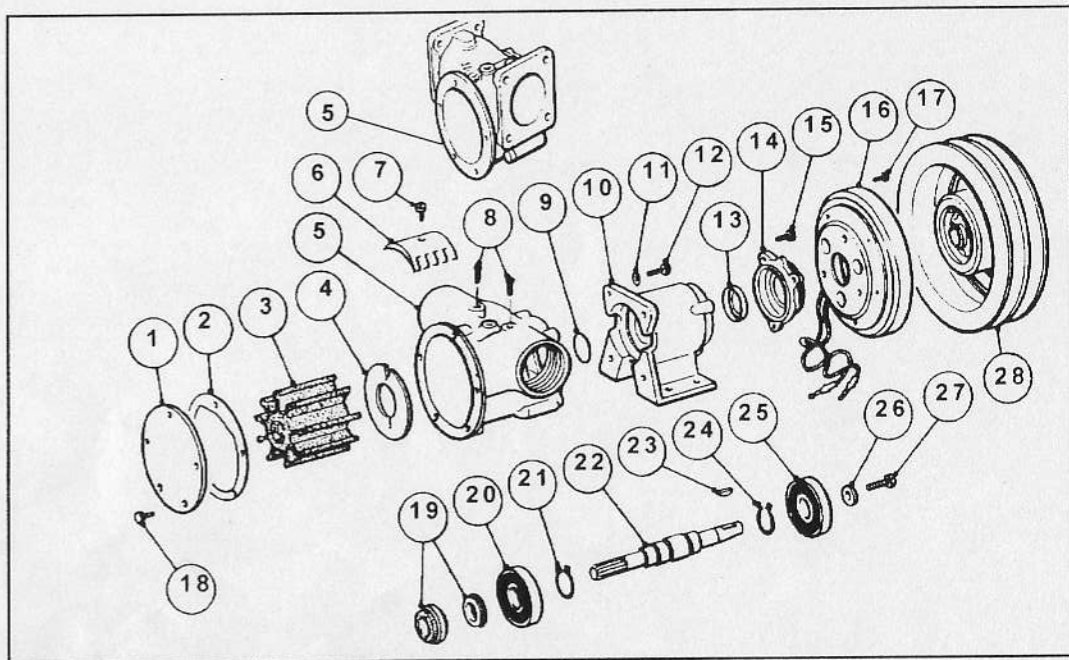


50080 / 50200 SERIES



50220 / 50270 SERIES



KEY	DESCRIPTION	QTY	50080 SERIES	QTY	50200 SERIES	QTY	50220	QTY	50270-0	QTY	50270-2
1	ENDCOVER/COVERCLE/DECKEL/COPERCHIO/TAPALOCK	1	3993	1	9336	1	9336	1	9336	1	9336
2	GASKET/JOINT/DECKELDICHTUNG/GUARIZONE/JUNTA/PACKING	1	890	1	816	1	816	1	816	1	816
3	IMPELLER-NEOPRENE/IMPULSEUR-NEOPRENE/IMPPELLER-NEOPRENE/GIRANTE IN NEOPRENE/IMPULSOR EN NEOPRENE/IMPPELLER NEOPRENE	1	17937-0001	1	17935-0001	1	17935-0001	1	21676-0001 or 17936-0001	1	21676-0001 or 17936-0001
		1	17937-0003	1	836-0003	1	836-0003	1	21676-0003 or 17936-0003	1	21676-0003 or 17936-0003
4	WEARPLATE/PLAQUE D'USURE/VERSCHLEISSEPLATTE/PIASTRA D'USURA/DISCO DE DESGASTE/SLITT BRICKA	1	4156	1	2574	1	2574	1	2574	1	2574
5	BODY/CORPS DE POMPE/PUMPENGEHAUSE/CORPO POMPA/CUERPO DE LA BOMBA/PUMPHUS	1	50084-2000	1	50204-2000	1	10634-02 (Flange)	1	10494-01 (Flange)	1	50274-2000 (BSP)
6	CAM/CAME/EXTENTER/CAMME/CAMLEVA/KAM	1	934	1	834	1	834	1	6988	1	6988
7	CAM SCREW/WIS DE CAM/EXZENTERSCHRAUBE/MITTA CAMME/TORNILLO DE LA LEVA/KAMSKRUV	1	SP1004-09	1	SP1005-04	1	SP1005-04	1	SP1005-04	1	SP1005-04
8	PIPE PLUG/PION DE CENTRAGE/GEWINDESTOPFEN/TAPPO/TAPON/RÖRPLUGG	2	SP2650-07	2	SP2650-07	2	SP2650-07	2	SP2650-07	2	SP2650-07
9	SLINGER/DEFLECTEUR/SPRIZSCHEIBE/SLINGER/PROTACTOR/BRICKA	1	3180	1	3181	1	X4020-324A	1	X4020-324A	1	X4020-324A
10	BEARING HOUSING/CORPS DE PALIER/LAGERGEHÄUSE/SCATOLA CUSCINETTI/CAJA COJINETES/LAGERHUIS						50273-0000	1	50273-0000	1	50273-0000
11	WASHER/RONDELLE/SCHWEIBE/RONDELLA/ARANDELA/BRICKA						SP1602-13	4	SP1602-13	4	X30081-101C
12	BOLT/BOULONS/MASCHINENSCHRAUBE/PERNO/BULON/BUL T						SP1095-28	4	SP1095-28	4	X3001-209C
13	INNER BEARING SEAL/JOINT DE LEVRE/LAGERDICHTUNG INNEN/TENUTA TA INTERNO/CUSCINE/RETEN INTENO	1	SP2700-48	1	SP2700-50	1	SP2701-54	1	SP2701-54	1	SP2701-54
14	CLUTCH ADAPTOR/ACCOUPLLEMENT EMBRAYAGE/KUPPLUNGSKONUS/TERUNGIADA TTATORE FRIZIONE/ADAPTADOR DE EMBRAGUE/KOPPLINGS ADAPTER						52201-1000	1	52201-1000	1	52201-1000
15	BOLT/BOULONS/MASCHINENSCHRAUBE/PERNO/BULON/BUL T						X3001-180F	3	X3001-180F	3	X3001-180F
16	FIELD COIL (12v)/BOBINE/MAGNETSPULE/CAMPO INDUTT ORE/ESTATOR/MAGNETSPOLE	1	SP2300-0063FC	1	SP2300-0063FC	1	SP2300-0063FC	1	SP2300-0063FC	1	SP2300-0063FC
		1	SP2300-0064FC	1	SP2300-0064FC	1	SP2300-0064FC	1	SP2300-0064FC	1	SP2300-0064FC
17	SCREW/WIS/SCHRAUBE/MITTA/TORNILLO/SKRUV	3	X3001-176F	3	X3001-174F	3	X3001-176F	3	X3001-176F	3	X3001-176F
18	ENDCOVER SCREWS/WIS DE COVERCLE/DECKEL SCHRAUBE/MITTE COPERCHIO/TORNILLO DE LA TAPA/SKRUV	6	X3001-147F	5	X3001-176F	5	SP1095-0640	5	SP1095-0640	5	X3001-176F
19	SEAL ASSEMBLY/GARNITURE MECANIQUE/WELLEN-DICHTUNGSSATZ/TENUTA/RETEN/KOMPL TÄTNING	1	SP2700-1027 Lip not shown	1	21849	1	21849	1	21849	1	21849
20	BEARING BALL/ROULE A BILLES/KUGELLAGER/CUSCINETTO/COJINETE/KULLAGER						SP2601-0458	1	SP2601-0458	1	SP2601-0458
21	RETAINING RING/CIRCLIPS/SPRENGRING/ANELLO DE RITGNO/RETEN/LASRING						Y5026-08	1	Y5026-08	1	Y5026-08
22	SHAFT/ARBRE/WELLE/ALBERO/EJE/AXEL						50227-0000	1	50227-0000	1	50277-0000
23	KEY/CLAVETTE/PASSFEDER/CHIAVETTA/LAVE/KIL	1	50087-0000	1	50207-0000	1	SP1401-10	1	SP1401-10	1	SP1401-10
24	RETAINING RING/CIRCLIPS/SPRENGRING/ANELLO DE RITGNO/RETEN/LASRING	1	SP1700-247	1	SP1700-245	1	Y5026-08	1	Y5026-08	1	Y5026-08
25	BEARING BALL/ROULE A BILLES/KUGELLAGER/CUSCINETTO/COJINETE/KULLAGER	1	SP2600-06	1	SP2600-04	1	SP2601-0458	1	SP2601-0458	1	SP2601-0458
26	WASHER/RONDELLE/SCHWEIBE/RONDELLA/ARANDELA/BRICKA										
27	SCREW/WIS/SCHRAUBE/MITTA/TORNILLO/SKRUV										
28	PULLEY (2A)/POULIE/RIEMENSCHWEIBE/PULEGGIA/POLEA/REMSKIVA	1	SP2300-0061RA	1	SP2300-0061RA	1	SP2300-0061RA	1	SP2300-0061RA	1	SP2300-0061RA
		1	SP2300-0063RA	1	SP2300-0063RA	1	SP2300-0063RA	1	SP2300-0063RA	1	SP2300-0063RA
	SERVICE KIT - NEOPRENE/TROUSSE DE SECOURS NEOPRENE/SERVICE KIT NEOPRENE/KIT DI RIPARAZIONE	1	SK406-0001	1	SK407-0011	1	SK407-0011	1	SK408-0011	1	SK408-0011
	SERVICE KIT - NITRILE/TROUSSE DE SECOURS NITRILE/SERVICE KIT NITRIL/KIT DI RIPARAZIONE NITRILE/KIT RIPARACION - NITRILE/SERVICE KIT NITRILE	1	SK406-0003	1	SK407-0003	1	SK407-0003	1	SK408-0013	1	SK408-0013

SUPPLIED WITH CLUTCH