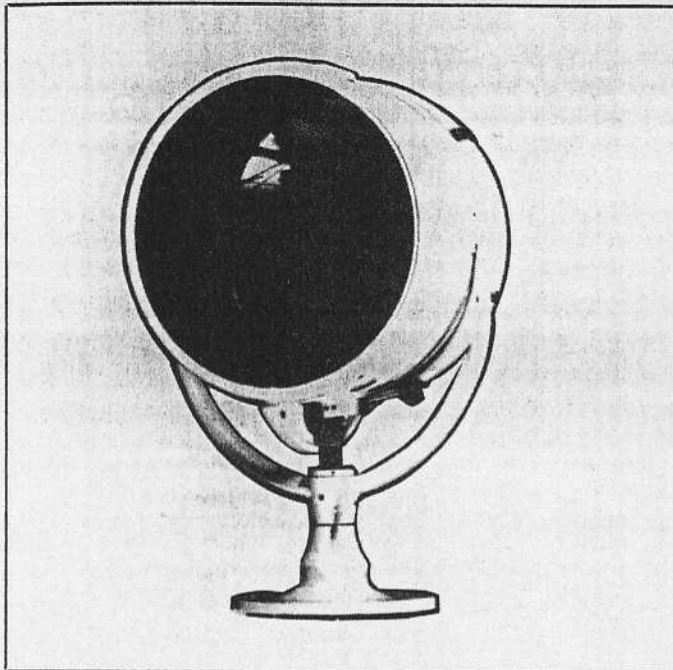


**RAY-LINE**

# Model 43680-SERIES



## MARINE SEARCHLIGHTS

*Lever-Gear Control*

*19" Diameter*

### FEATURES

- Lever-Gear control for smooth, easy operation.
- Full 19" silver plated parabolic mirror.
- High temperature white enamel finish.
- Water resistant design.
- Hinged rear door for easy relamping and mirror cleaning.
- All aluminum construction with stainless steel fittings.
- Clamping screw locks horizontal movement.
- External focusing device for lamp.
- Sturdy construction tested to MIL STD - 167 - 1, Type I.
- Escutcheon plate acts as integral stabilizing device.
- Three wire grounding system.
- Mogul Bipost as standard socket.
- Shipping weight 74 lbs (33,6 kg).

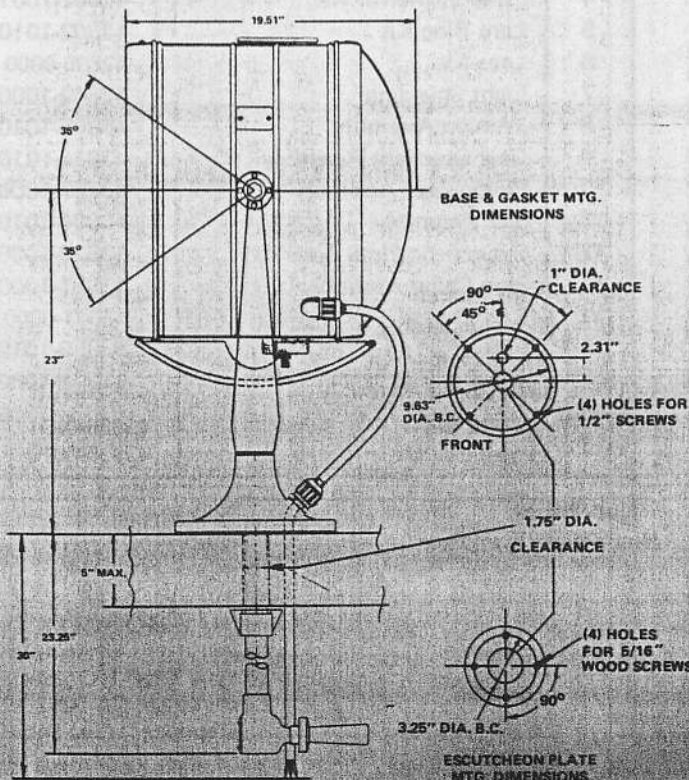
Model 43680-SERIES

### BULB SELECTION\*

STANDARD MODELS			
MODEL NUMBER	ROD LENGTH	VOLTAGE	BASE TYPE
43680-0010	23"	120 Vac	Mogul Bipost
43680-7010	36"		
43680-7020	48"		
43680-7030	60"		

JABSCO P/N	BULB CODE	BASE TYPE	WATTS	VOLTS	AMPS	LUMENS
98039-0604	CYV	Mogul Bipost	1,000	120 Vac	8.3	27,500
98039-0605	CXZ	Mogul Bipost	1,500	120 Vac	12.5	38,500

\*Light is supplied less bulb. Please order bulb from above.



### HOW TO ORDER SEARCHLIGHTS:

Specify model number, voltage, bulb number, and bulb code. Specify control rod length if different than standard dimensions shown on chart.

EXAMPLE: 43680 - 0010, White Painted, 120 Vac, 98039 - 0604, CYV, 23" rod length.

### INSTALLATION INSTRUCTIONS -

Determine mounting location and drill 1-3/4" dia. hole for searchlight control rod. Also drill 1" dia. hole for cord per the mounting diagram. With control rod connected to light head, remove gear box by removing two (2) mounting screws. Remove escutcheon plate, (Item 12), from control rod. Insert searchlight control rod through hole, and locate mounting holes. Remove searchlight and drill mounting holes for 1/2" flat or oval head stainless steel screws. Use bolts if your installation requires them (not supplied with searchlight). Place base gasket on mounting surface. Additional caulking material may

be required if mounting surface is not smooth. Install searchlight and secure with mounting screws. From inside the cabin, locate and drill mounting holes, and secure escutcheon plate, (Item 12), using 5/16" flat or oval head stainless steel wood screws (not supplied with searchlight). Replace the gear box and secure to control rod using the mounting screws.

Use 12 gauge stranded copper wire for up to 35' (10,6 m). For greater distances, use 10 gauge stranded copper wire. Use a switch with an amperage rating of no less than the amperage of the bulb (see chart). The green lead in the cable is intended for bonding (grounding) of the searchlight. Install a standard 10 amp fuse for the 1,000 watt bulb, and a 15 amp fuse for the 1,500 watt bulb.

**WARNING: BEFORE CHANGING BULB, MAKE SURE POWER HAS BEEN TURNED OFF AND BULB HAS BEEN ALLOWED TO COOL, BULB IS EXTREMELY HOT FOR SEVERAL MINUTES AFTER OPERATION AND CAN BURN HANDS. NEVER LOOK DIRECTLY AT THE BULB OR DIRECTLY INTO THE SEARCHLIGHT WHEN IN OPERATION, DAMAGE TO THE EYES MAY RESULT.**

**CAUTION: THESE SEARCHLIGHTS ARE DESIGNED FOR THE MORE EFFICIENT, LONGER LASTING TUNGSTEN-HALOGEN BULBS. THE QUARTZ GLASS ENVELOPE OF THE TUNGSTEN-HALOGEN BULB SHOULD NEVER BE TOUCHED. IF TOUCHED BY MISTAKE, CLEAN AT ONCE WITH ALCOHOL. ALWAYS HANDLE THE BULBS BY THE CERAMIC BASE. WHEN REPLACING A BULB, READ THE INSTRUCTIONS ON THE BULB CARTON BEFORE INSTALLING.**

**WARNING - HOUSING IS HOT WHEN SEARCHLIGHT IS IN OPERATION. SERIOUS BURNS COULD RESULT FROM TOUCHING HOUSING WHILE SEARCHLIGHT IS OPERATING. CARE SHOULD BE TAKEN NOT TO TOUCH THE HOUSING WHEN FOCUSING THE BULB. LET SEARCHLIGHT COOL OFF BEFORE TOUCHING HOUSING OR CHANGING THE BULB.**

### OPERATION AND MAINTENANCE —

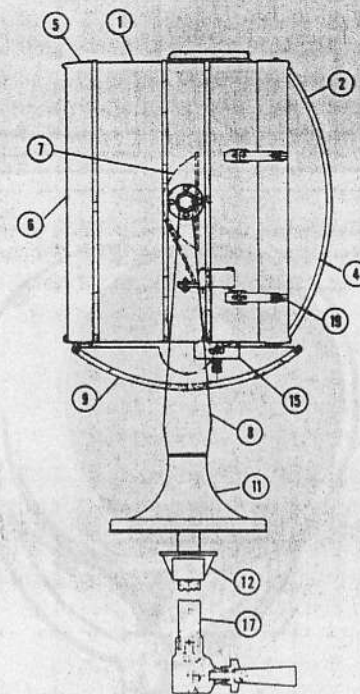
To focus bulb, loosen locking knob and locking ring at bottom of light housing. Push focusing arm either forward or aft in order to obtain optimum beam. (Optimum candlepower is obtained when smallest and brightest spot is projected). After bulb is properly focused, retighten locking knob and locking ring snugly. Bulb is now focused until next bulb installation.

When installing the bulb, be sure the flat side of the filament is facing the mirror. Bulbs may vary slightly in their construction so alignment may be required. To adjust alignment, loosen lock nut at the bottom of the socket support tube. Rotate socket support until correct alignment is obtained and retighten lock nut.

Horizontal motion dampening and locking is obtained by tightening the black knob in the escutcheon plate. Vertical motion dampening and locking is obtained by tightening the locking knob on the control handle.

For best light performance, the mirror and lens should be cleaned each time the bulb is changed or more often as required. Apply a coat of all-weather grease to all moving parts as needed. Periodically check bolts and set screws for tightness.

THE PRODUCTS DESCRIBED HEREIN ARE SUBJECT TO THE JABSCO® ONE YEAR LIMITED WARRANTY, WHICH IS AVAILABLE FOR YOUR INSPECTION UPON REQUEST.



### PARTS LIST

KEY	DESCRIPTION	PAINTED
1	Housing Assembly	43800-1010
2	End Cap Assembly	43803-1010
3	Cord Assembly	43862-1000
4	Parabolic Mirror Kit	42062-1001
5	Lens Ring Kit	43802-1010
6	Lens Kit	43836-0000
7	Light Shielding	43849-1000
8	Trunion Assembly	43805-1010
9	Gear Quadrant Assembly	43816-1010
10	Pinion Gear Assembly*	43757-1000
11	Base Assembly	43804-1010
12	Escutcheon Plate Assembly	43823-1000
13	Stop Collar Assembly*	43821-1000
14	Lens Gasket	43841-0000
15	Focus Assembly	43859-1010
16	Lamp Holder Kit	43809-1000
17	Cont. Rods Assembly	43820-1000
18	Bearing Kit*	43836-0001
19	Hinges Pin Kit	43830-0010

\* Not Shown  
Bulbs - See Front Page

**Jabsco**  
ITT Fluid Technology Corporation  
1485 Dale Way, P.O. Box 2158  
Costa Mesa, CA 92628-2158  
Telephone: (714) 545-8251