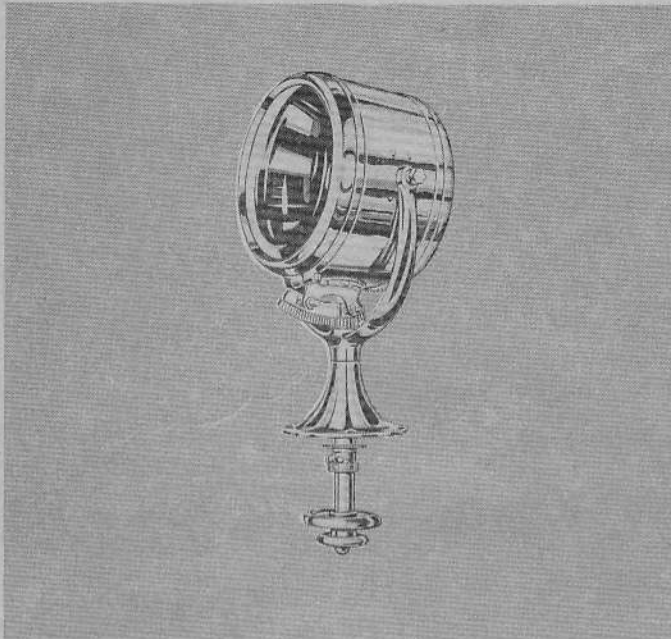


RAY-LINE®
MARINE SEARCHLIGHTS

10" Diameter MODEL 40733-Series Wheel Control

PRODUCT DATA



FEATURES

- Heavy-gauge copper, brass, and bronze construction.
- High quality heavy nickel-chrome finish, or tough baked enamel paint finish.
- Heat resistant, tempered convex lens set in weather-proof gasket.
- Escutcheon plate covers and finishes clearance hole in cabin ceiling.
- Double wheel for smooth and accurate beam control.
- 285° horizontal sweep and 50° vertical motion. Horizontal locking device.
- Double contact bayonet-type projector bulb.
- Precision formed polished chrome parabolic reflector.
- External focusing for spot or flood beam.
- Rubber covered wiring cable enclosed in weather-proof flexible conduit.
- Approximate shipping weight: 29 lbs.

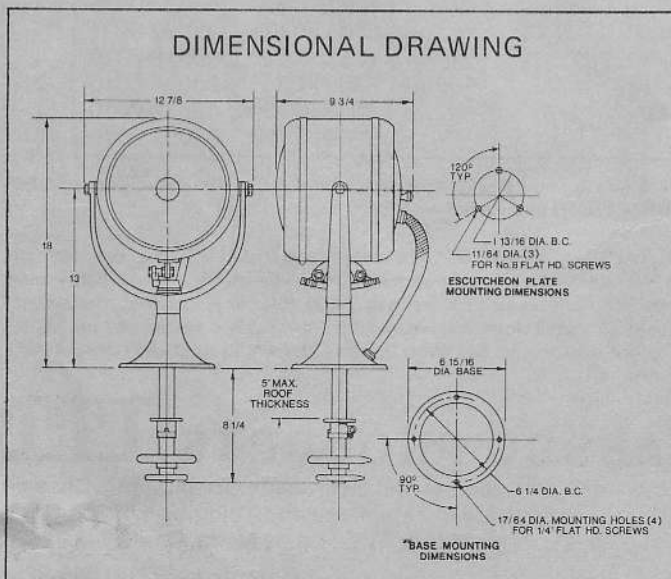
MODEL 40733-SERIES WHEEL CONTROL

STANDARD MODELS

Model Number	Finish	Voltage	Amperage	Bulb Number	Rod Length Below Base
40733-0060	Gray	12	6	98039-0020	8 1/4"
40733-0080	Gray	32	3 1/2	98039-0060	8 1/4"
40733-0180	Chrome	12	6	98039-0020	8 1/4"
40733-0200	Chrome	32	3 1/2	98039-0060	8 1/4"

NOTE: For 24 volt, order Bulb Number 98039-0050

DIMENSIONAL DRAWING



INSTALLATION AND MAINTENANCE

INSTALLATION INSTRUCTIONS: Searchlight should be mounted so base is level. Drill 1 1/8" clearance hole through roof for outside control rod. Drill 1/2" hole for wiring directly behind and next to control rod hole. Loosen set screws (Keys 19A, 20A) and remove large and small control wheels (Keys 19, 20). Loosen bolts (Keys 9A, 10A) and remove stop collar (Key 9) and escutcheon plate (Key 10) from control rod. Mount light in place, feeding wire through 1/2" hole. After putting sealing compound under base, fasten to roof with conduit fitting facing aft. Replace escutcheon plate and mount to ceiling with split-in plate facing aft. Replace stop collar and tighten screw for rotation stop. Replace control wheels.

JABSCO PRODUCTS **ITT**

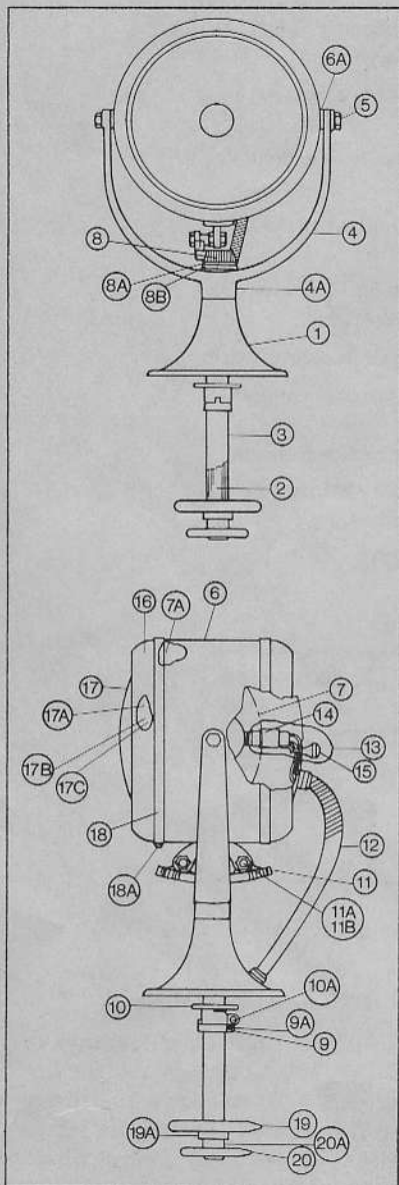
INSTALLATION AND MAINTENANCE (CONT'D.)

WIRING INSTRUCTIONS: Use stranded copper wire. For 12 volt models, use 12 gauge wire for up to 35' from power source. For 32 volt models, use 16 gauge wire for up to 50' from power source. For lengths greater than specified, a heavier wire should be used.

RELAMPING AND FOCUSING: Remove door clamp (Key 18) and door (Key 16) and remove bulb by pushing in and turning to left. Install new bulb. Replace door and clamp. Adjust focusing knob for desired beam width.

MAINTENANCE: Clean the bulb, reflector, and lens with a soft, lint-free cloth periodically for best efficiency. Apply a coating of all-weather grease to moving parts as needed.

PARTS LIST



Key	Part Description	Gray Models	Chrome Models	Qty.
1	Base (includes male connector for conduit)	40522-0000	40522-0020	1
2	Inside Control Rod	40525-0000	40525-0000	1
3	Outside Control Rod	40397-0000	40397-0010	1
4	Trunnion	40524-0000	40524-0020	1
*4A	Set Screw for Trunnion	96091-0010	96091-0010	2
*5	Mounting Bolts	43265-0000	43265-0010	2
*6	Housing Assembly (Includes brace rack for mounting quadrant gear, trunnion mounts, and male connector for conduit)	40734-0000	40734-0020	1
*6A	Set Screw for Housing Assembly	96091-0010	96091-0010	2
*7	Reflector (includes socket sleeve)	40523-0000	40523-0000	1
*7A	Screws for Mounting Reflector	91030-0140	91030-0140	3
8	Pinion Gear	40528-0010	40528-0000	1
*8A	Set Screws for Pinion Gear	96091-0020	96091-0020	2
*8B	Thrust Washer for Pinion Gear	43190-0010	43190-0010	1
9	Stop Collar	40520-0010	40520-0000	1
*9A	Bolt for Stop Collar	91002-0210	91002-0180	1
10	Escutcheon Plate	40534-0010	40534-0000	1
*10A	Bolt for Escutcheon Plate	40517-0000	40517-0010	1
11	Quadrant Gear	40529-0000	40529-0010	1
*11A	Bolt for Quadrant Gear	43264-0000	43264-0010	2
*11B	Nut for Quadrant Gear	43252-0000	43252-0010	4
*12	Conduit	40518-0010	40518-0020	1
*13	Socket and Focusing Device (includes wire through base)	43395-0000	43395-0010	1
*14	Socket only (includes wire through base)	40568-0000	40568-0000	1
*15	Focusing Device only (includes knob, shank, washer and locknut)	43235-0000	43235-0010	1
*16	Door only (less lens)	40535-0000	40535-0020	1
*17	Lens only	40526-0000	40526-0000	1
*17A	Gasket for Lens	40044-0000	40044-0000	1
*17B	Clips for Mounting Lens	43262-0000	43262-0000	6
*17C	Screws for Mounting Lens	91030-0140	91030-0140	6
*18	Door Clamp	40527-0000	40527-0020	1
*18A	Bolt for Door Clamp	91002-0232	91002-0231	1
*19	Large Control Wheel	40536-0000	40536-0010	1
*19A	Set Screw for Wheel	96091-0010	96091-0010	2
*20	Small Control Wheel	40537-0000	40537-0010	1
*20A	Set Screw for Wheel	96091-0010	96091-0010	2

Items in Parts List with lettered key numbers are supporting hardware to the basic part number (i.e. Key numbers 17A, 17B and 17C should be ordered with the lens, Key 17).

NOTE: SERVICE PARTS FOR EARLIER MODELS — The above Parts List is for lights marked with a nine digit model number (i.e. 40733-0000). Earlier models are marked with a three digit model (i.e. 733). Only key numbers marked with an asterisk are interchangeable for all models. For service requirements on lights with three digit model numbers, where interchangeable parts are not indicated, the light should be returned to the factory at 501 West Liberty Street, Springfield, Ohio 45501.

JABSCO PRODUCTS **ITT**

Marine and Recreation Components Division
International Telephone and Telegraph Corporation
1485 Dale Way, Costa Mesa, California 92626

Telephone: (714) 545-8251