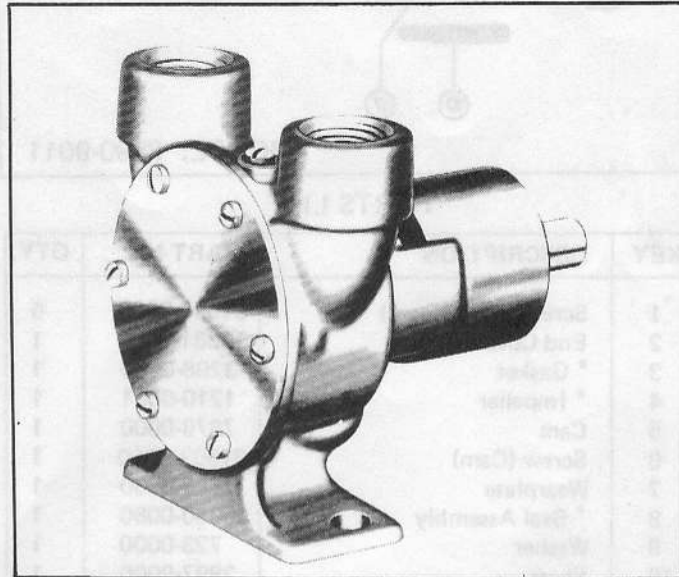


JABSCO**Model 3890-9011**

MODEL: 3890-9011

SELF-PRIMING PUMPS FEATURES

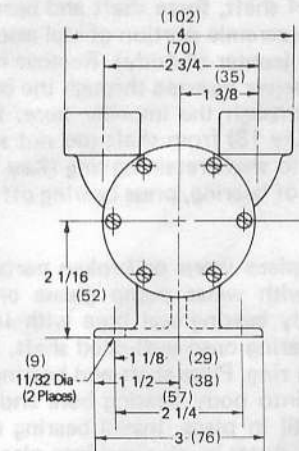
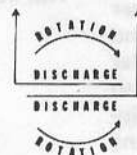
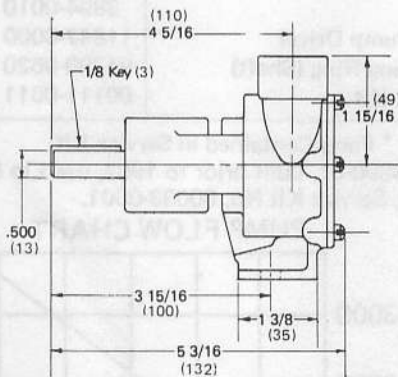
Body: Bronze
 Impeller: Jabasco Neoprene Compound
 Shaft: Bronze
 Shaft Seal: Carbon-Ceramic Face Type
 Ports: 3/4" NPT
 Weight: Approx. shipping weight 4 lbs
 (1,8 kgs)

APPLICATION:

Marine Engine Cooling	Circulating
Pumping Bilges	Transfers
Washdowns	Sump Drainage
	Spill Returns

Model 3890-9011

DIMENSIONAL DRAWING INCHES (Millimetres)



INSTALLATION INSTRUCTIONS

Pump may be mounted in any position. The rotation of the pump shaft determines the location of the pump's intake and discharge ports (refer to dimensional drawing). Before installing, turn the pump shaft in the direction of the operating rotation.

DRIVE – Belt or Direct with flexible coupling.

WARNING



EXPOSED PULLEYS AND BELTS CAN CAUSE INJURY. INSTALL SHIELD AROUND PULLEYS AND BELTS.

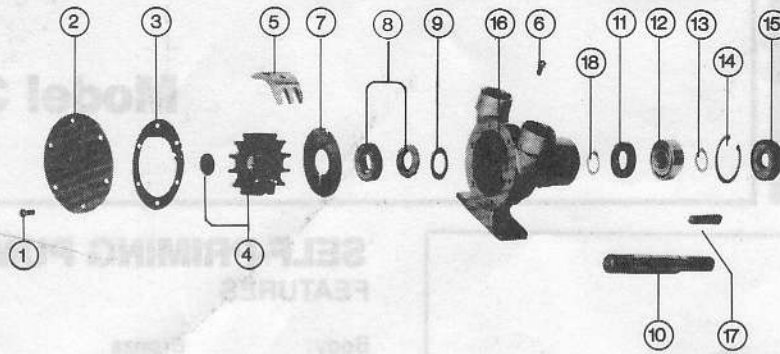
Direct Drive – Clearance should be left between drive shaft and pump shaft when installing coupling. Always mount and align pump and drive shaft before tightening the coupling set screw.

NOTICE: If drive pulley or coupling must be pressed on shaft, remove end cover and impeller and support shaft from impeller end during press operation. Do not hammer a pulley or coupling on shaft. Failure to follow above instructions can damage the pump.

OPERATING INSTRUCTIONS

Pump will self-prime at low or high speeds. Make sure inlet line is clear and all connections airtight. Do not run pump dry for more than 30 seconds. Lack of water flow may damage impeller. To drain pump, loosen end cover screws.

EXPLODED VIEW



MODEL: 3890-9011

SERVICE INSTRUCTIONS

Impeller Replacement: Remove end cover and gasket. Pull impeller out by grasping hub or blades with pliers. Replace impeller, gasket, and end cover. A light coating of grease in impeller bore will aid priming on dry start up. (Use correct Jabsco gasket; a thicker or thinner gasket may cause impeller damage.) Standard gasket is .010" thick.

Major Repair: Remove pump from mount to replace seal assembly, bearings, or shaft.

Disassembly: Remove end cover and gasket. Remove impeller. Loosen cam screw and tap down to loosen cam. Remove cam screw, cam, and wearplate. Remove sealant from cam and cam screw. From drive end of pump, remove outer bearing seal by prying with screw driver. Remove bearing to body retaining ring (Key 14). By pressing on impeller end of shaft, force shaft and bearing assembly out of body. Slide ceramic portion of seal assembly and washer out drain area (center of body). Remove inner bearing seal. With a screw driver inserted through the bearing bore, drive the seal out through the impeller bore. Remove shaft retaining ring (Key 18) from shaft (do not scratch shaft). Remove bearing to shaft retaining ring (Key 13), and supporting inner race of bearing, press bearing off over drive end of shaft.

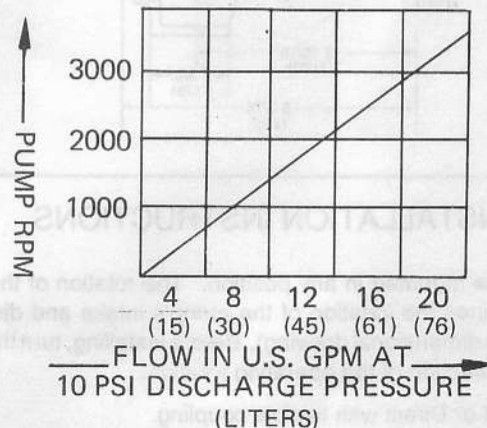
Assembly: Replace worn or broken parts. Lubricate inner bearing seal with water pump grease or equivalent, and press into body bearing seal bore with lip facing impeller bore. Press bearing onto well-oiled shaft. Install bearing to shaft retaining ring. Place shaft and bearing assembly (splined end first) into body bearing bore and press on bearing outer race until in place. Install bearing to body retaining ring and press outer bearing seal into place (lip facing drive end). Using long nosed retaining ring pliers, place shaft retaining ring over splined end of shaft and into groove. (Do not scratch shaft.) Location of shaft retaining ring may be observed through drain area (center of body). Slide washer over splined end of shaft and up against shaft retaining ring. Place ceramic portion of seal assembly over splined end of shaft and up against washer (flat side of ceramic seat must face impeller bore). Lubricate with water (do not use oil) to ease assembly. Apply a light coat of sealant to the O.D. of seal, and with carbon facing ceramic, press on outer edge of seal seat until flush with rear of impeller bore. Install wearplate with small notch facing up. Seal threads of cam screw and top of cam and install loosely. Lubricate impeller bore with a light coat of water pump grease and install impeller. Install gasket and end cover. Tighten cam screw.

PARTS LIST

KEY	DESCRIPTION	PART NO.	QTY.
1	Screws (End Cover)	91000-0020	6
2	End Cover	11831-0000	1
3	* Gasket	3298-0000	1
4	* Impeller	1210-0001	1
5	Cam	7876-0000	1
6	Screw (Cam)	91003-0010	1
7	Wearplate	7883-0000	1
8	* Seal Assembly	96080-0080	1
9	Washer	723-0000	1
10	Shaft	3897-9000	1
11	Bearing Seal (Inner)	92700-0180	1
12	Ball Bearing	92600-0070	1
13	Retaining Ring (Brg. to Shaft)	18715-0000	1
14	Retaining Ring (Brg. to Body)	18714-0000	1
15	Bearing Seal (Outer)	915-0000	1
16	Body	3894-0010	1
17	Key (Pump Drive)	11847-0000	1
18	Retaining Ring (Shaft)	91700-0620	1
	Service Kit	90111-0011	

* Parts Contained in Service Kit
Models 3890 & 3890-01, built prior to 1962, use Lip Seal No. 92700-0060, Service Kit No. 90033-0001.

PUMP FLOW CHART



THE PRODUCT DESCRIBED HEREIN IS SUBJECT TO THE JABSCO ONE YEAR LIMITED WARRANTY, WHICH IS AVAILABLE FOR YOUR INSPECTION UPON REQUEST.

ITT Jabsco

ITT Fluid Technology Corporation
1485 Dale Way, P.O. Box 2158, Costa Mesa, CA 92628-2158
Tel: (714) 545-8251; Fax: (714) 957-0609
Bingley Road, Hoddesdon, Hertfordshire EN11 0BU England
Tel: 0992-467191; Tlx: 263251 G; Fax: 0992-467132