

HEAD CAPACITY TABLE

MODEL 3590

TOTAL HEAD		500 RPM	1000 RPM	1750 RPM	2600 RPM	3500 RPM
Lbs. per Sq. In.	Ft. of Water	GPM	GPM	GPM	GPM	GPM
4.3	10	3.4	8.1	13.9	20.7	24.9
8.7	20	3.1	7.6	12.8	19.8	23.1
13.0	30	2.4	6.7	11.7	18.0	21.3
17.3	40	1.3	5.8	9.4	16.2	19.3
21.6	50		4.5	9.0	13.5	16.8

OPERATING INSTRUCTIONS

- INSTALLATION**—Care should be taken that the intake and discharge piping of the engine corresponds with the proper port markings on the pump. This may necessitate reversing the present piping installation. See mounting installation on reverse side.
- DRIVE**—Direct .
- SPEEDS**—100 RPM to the maximum shown in the performance table.
- SELF-PRIMING**—Unit will operate satisfactorily at low as well as high speeds. For vertical suction lift requirements at maximum of 15 ft., a minimum of 800 RPM is required. Pump will produce suction lift up to 24 ft. when primed. Be sure suction lines are air tight.
- RUNNING DRY**—Unit depends on liquid pumped for lubrication. **DO NOT RUN DRY** for more than 30 seconds. Lack of liquid may burn the impeller.
- PRESSURES**—For continuous operation, pressure should not exceed 30 pounds for the standard Model 3590
- TEMPERATURES**—45-120°F. Use standard impeller. 45-180°F. Use special .08 impeller.
- FREEZING WEATHER**—Drain unit by loosening end cover plate. For closed systems, use only Atlas "Permaguard" or Du Pont "Zerex" anti-freeze compounds. Do not use petroleum based anti-freeze compounds.
- IMPELLER REPLACEMENT**—Remove end cover. Withdraw impeller by grasping impeller hub with pliers.
- GASKET REPLACEMENT**—Always use standard pump part. A thicker gasket will reduce priming ability. A thinner gasket will cause impeller binding.
- CAM REPLACEMENT**—Coat top surface of new cam and cam screw threads with Permatex #1 or equivalent sealing compound before installing.
- SPARE PARTS**—Avoid costly shut downs by always having a JABSCO Repair Kit on hand #7012.

WARRANTY: All products of the company are sold and all services of the company are offered subject to the company's warranty and terms and conditions of sale, copies of which will be furnished upon request.

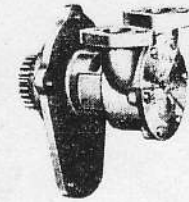
JABSCO® PUMP COMPANY

1485 DALE WAY • COSTA MESA, CALIF.

MODEL 3590

Special Flange-Mounted Model
for Chrysler Marine Engines

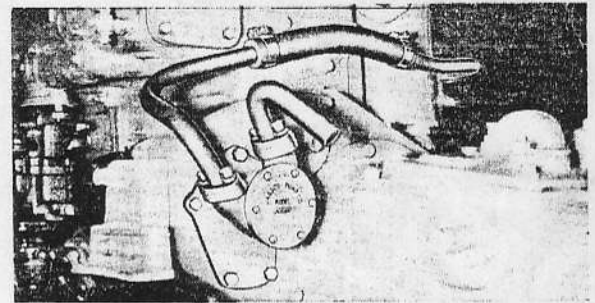
Series M-46—M-47—M-48



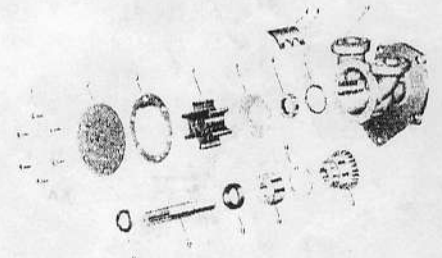
1" Port Size

Approx. Wt. 7 lbs.

INSTALLATION DRAWING



EXPLODED VIEW



PARTS LIST

STANDARD MODEL 3590—1"

KEY	DESCRIPTION	QTY.	Part. No.
1	SCREWS—End Cover to Body	6	SP-1003-01
2	END COVER	1	3595
3	GASKET	1	2432
4	IMPELLER	1	920-08
5	WEAR PLATE (Key to 9 Assem)	1	
6	SEAL—Shaft	1	SP-2700-06
7	"O" RING	1	SP-2000-21
8	SCREW—Body to Cam	1	SP-1004-09
9	CAM & Wear Plate Assembly	1	7957
10	BODY	1	3594
11	SLINGER	1	3180
12	SHAFT	1	3597
13	BEARING SEAL	1	SP-2700-20
14	BALL BEARING	1	SP-2600-06
15	DRIVE GEAR	1	3296
16	RETAINING RING	1	SP-1701-185
17	SEAL SPACER (Not Shown)	1	3166

ENGINE NAME AND MODEL

Chrysler Series—M-46—M-47—M-48