

# HEAD CAPACITY TABLE

MODEL 3380

| TOTAL HEAD       |              | 500 RPM | 1160 RPM | 1750 RPM | 2750 RPM | 3600 RPM |
|------------------|--------------|---------|----------|----------|----------|----------|
| Lbs. per Sq. In. | Ft. of Water | GPM     | GPM      | GPM      | GPM      | GPM      |
| 4.3              | 10           | 2.0     | 4.4      | 6.7      | 9.7      | 10.4     |
| 8.7              | 20           | 1.7     | 4.0      | 6.3      | 9.2      | 10.2     |
| 13.0             | 30           |         | 3.8      | 5.7      | 8.9      | 10.0     |
| 17.3             | 40           |         | 3.0      | 4.9      | 8.1      | 9.7      |
| 21.6             | 50           |         |          | 3.9      | 7.2      | 8.9      |

## OPERATING INSTRUCTIONS

- INSTALLATION**—Pump may be mounted at any angle without loss of efficiency. The rotation of the motor shaft determines the location of the pump's intake and discharge ports. Before installing, turn pump shaft in direction of operating rotation.
- DRIVE**—Direct.
- SPEEDS**—100 RPM to the maximum shown in the performance table. For longer pump life, operate at lowest speeds permissible.
- SELF-PRIMING**—Unit will operate satisfactorily at low as well as high speeds. For vertical suction lift requirements at maximum of 15 ft., a minimum of 800 RPM is required. Pump will produce suction lift up to 24 ft. when primed. Be sure suction lines are air tight.
- RUNNING DRY**—Unit depends on liquid pumped for lubrication. **DO NOT RUN DRY** for more than 30 seconds. Lack of liquid may burn the impeller.
- CAUTION**—Do not pump petroleum derivatives, solvents, thinners, highly concentrated or organic acids. If corrosive fluids other than water must be handled, pump life will be prolonged if flushed with water after each use or after each work day.
- PRESSURES**—For continuous operation, pressure should not exceed 30 pounds for the standard Model 3380.
- TEMPERATURES**—45-120°F. Use standard impeller. 45-180°F. Use special .08 impeller. 32-45°F. Use special .09 impeller. (Generally not recommended for Marine use.)
- FREEZING WEATHER**—Drain unit by loosening end cover plate. For closed systems, use only Atlas "Permaguard" or Du Pont "Zerex" anti-freeze compounds. Do not use petroleum based anti-freeze compounds.
- IMPELLER REPLACEMENT**—Remove end cover. Withdraw impeller by grasping impeller hub with pliers.
- GASKET REPLACEMENT**—Always use standard pump part. A thicker gasket will reduce priming ability. A thinner gasket will cause impeller binding.
- CAM REPLACEMENT**—Coat top surface of new cam and cam screw threads with Permatex #1 or equivalent sealing compound before installing.
- SPARE PARTS**—Avoid costly shut downs by always having a JABSCO Repair Kit on hand.

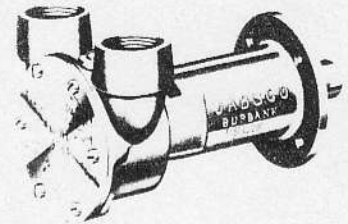
**WARRANTY:** All products of the company are sold and all services of the company are offered subject to the company's warranty and terms and conditions of sale, copies of which will be furnished upon request.

**JABSCO**® PUMP COMPANY

1485 DALE WAY • COSTA MESA, CALIF.

# MODEL 3380

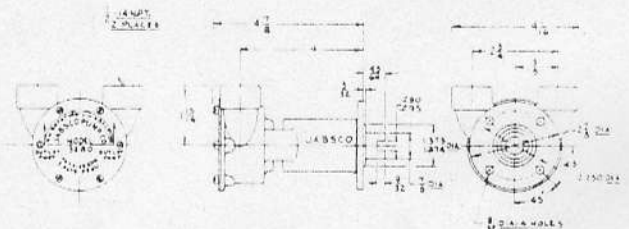
Special Flange-Mounted Model for High Speed Marine Engines



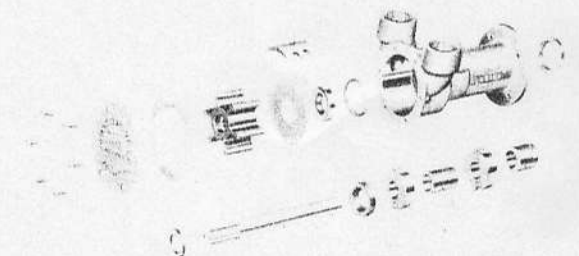
1/2" Pipe Size

Approx. Wt. 5 lbs. 10 oz.

## INSTALLATION DRAWING



## EXPLODED VIEW



## PARTS

### STANDARD MODEL 3380—1/2" —

| Key   | Description                 | Qty. | Part Number |
|-------|-----------------------------|------|-------------|
| 1     | Screws (End Cover to Body)  | 6    | SP-1002-02  |
| 2     | End Cover                   | 1    | 3385        |
| 3     | Gasket                      | 1    | 5212        |
| 4     | Impeller                    | 1    | 1212        |
| 5 & 9 | Wear Plate & Cam (Assembly) | 1    | 5211        |
| 6     | Seal (Shaft)                | 1    | SP-2700-06  |
| 7     | "O" Ring                    | 1    | SP-2000-21  |
| 8     | Screw (Cam to Body)         | 1    | SP-1003-07  |
| 10    | Body                        | 1    | 3384        |
| 11    | Adaptor Ring                | 1    | 3376        |
| 12    | Slinger                     | 1    | 3286        |
| 13    | Shaft                       | 1    | 5857        |
| 14    | Bearing Seal                | 1    | SP-2700-18  |
| 15    | Ball Bearings               | 2    | SP-2600-13  |
| 16    | Bearing Spacer              | 1    | 3383        |
| 17    | Coupling                    | 1    | 3278        |

## ENGINE NAME AND MODEL

CHRIS CRAFT - K Series (95 to 120 HP)

HERCULES - QX

KERMATH - Sea Prince

OSCO - Hercules Diesel 470 (AND OTHERS)

PALMER - PH75 - PH125

UNIVERSAL - Explorer 6 - Model OK

Master 6 - Model OL