



## DRUM PUMPS

### FEATURES

<b>Motor</b>	
<b>Characteristics:</b>	Rotary air motor, 0.36 HP (0,27 kW) at 8000 rpm and 80 psi (5.5 bar) pressure with an air consumption of 15 cfm (0.4 m <sup>3</sup> /m).
	Maximum recommended supply air pressure is 90 psi (6.2 bar).
<b>Enclosure:</b>	Cast iron body, cast aluminum endplates and adaptor.
<b>Inlet Valve:</b>	Bronze ¼ turn ball valve, ⅛" dia. NPT
<b>Exhaust Muffler:</b>	Spun wire chamber with screen.
<b>Weight:</b>	1.2 lbs. (0,5 kgs.)

MODEL 16440-0000

### APPLICATIONS

Specifically designed to fit the JABSCO 16400-series and 16410-series drum pumps. All pumps and motors are interchangeable. The 16440-0000 air motor is essential for areas where flammable vapors are present.

**WARNING: A GROUND WIRE MUST BE USED TO DISCHARGE ANY ACCUMULATED STATIC CHARGE. WHEN PRODUCT IS USED IN AREAS WHERE FLAMMABLE LIQUIDS OR VAPORS ARE PRESENT, APPROPRIATE EXPLOSION PROOF MOTOR OR AIR MOTOR MUST BE USED. IF WARNING IS IGNORED, EXPLOSION AND DEATH MAY OCCUR.**

### OPERATING INSTRUCTIONS

1. **General** – When operating the JABSCO drum pump protective clothing, gloves, and safety glasses should be worn. All standard safety practices should be followed.
2. **Installation** – Place threaded motor flange on drum pump mounting ring. Tighten mounting ring. Drive coupling is self-aligning. Motor and pump combination are ready for operation.
3. **Connection** – Thread male ⅛" dia. NPT air hose connector into air motor inlet valve. Make certain inlet valve is in the closed position; when the valve handle is positioned perpendicular to the centerline of the inlet valve. Check that the supply air complies with the motor requirements. Attach air supply hose to air motor. **NOTICE:** An air line oiler and a water separator located just prior to the motor inlet are strongly recommended to extend the motor life.
4. **Enclosure** – JABSCO 16440-0000 air motor is considered explosion-resistant by its design. Caution should be taken when using it in an area where flammable vapors are present. **WARNING: POTENTIAL STATIC ELECTRIC CHARGE. EXTREME CARE SHOULD BE TAKEN WHEN USING AIR MOTOR IN AN AREA WHERE FLAMMABLE VAPORS ARE PRESENT. A GROUND WIRE SHOULD BE USED TO DISCHARGE ANY ACCUMULATED STATIC CHARGE. IF WARNING IS IGNORED EXPLOSION AND DEATH MAY OCCUR.** Should any corrosive liquid come in contact with the motor housing, wipe off with neutralizing solution.
5. **Static Charge** – Certain fluids when pumped create a static charge. When handling these fluids a ground wire must be used to discharge any static charge. One end of ground wire should be clamped to the pump bearing housing and the other end clamped to the metal drum or a grounded object.
6. **Temperature Range** – Motors are designed to operate in an ambient 40° - 120°F (4° - 53°C) temperature environment. Pumpage temperatures are maximum at 200° F (93°C). For higher temperatures consult factory.
7. **Spare Parts** – Use JABSCO service parts for replacement and repair.

## SERVICE INSTRUCTIONS

**WARNING:** HAZARDOUS AIR PRESSURE. PRIOR TO ANY DISASSEMBLY OR ASSEMBLY OF THE JABSCO DRUM PUMP AIR MOTOR MAKE CERTAIN ALL AIR CONNECTIONS HAVE BEEN DISCONNECTED AND PREVENTED FROM ACCIDENTALLY BEING CONNECTED. FAILURE TO DO SO MAY CAUSE DEATH OR INJURY.

**NOTICE:** All air system repair and plumbing should be completed by a competent mechanic and in accordance with applicable codes.

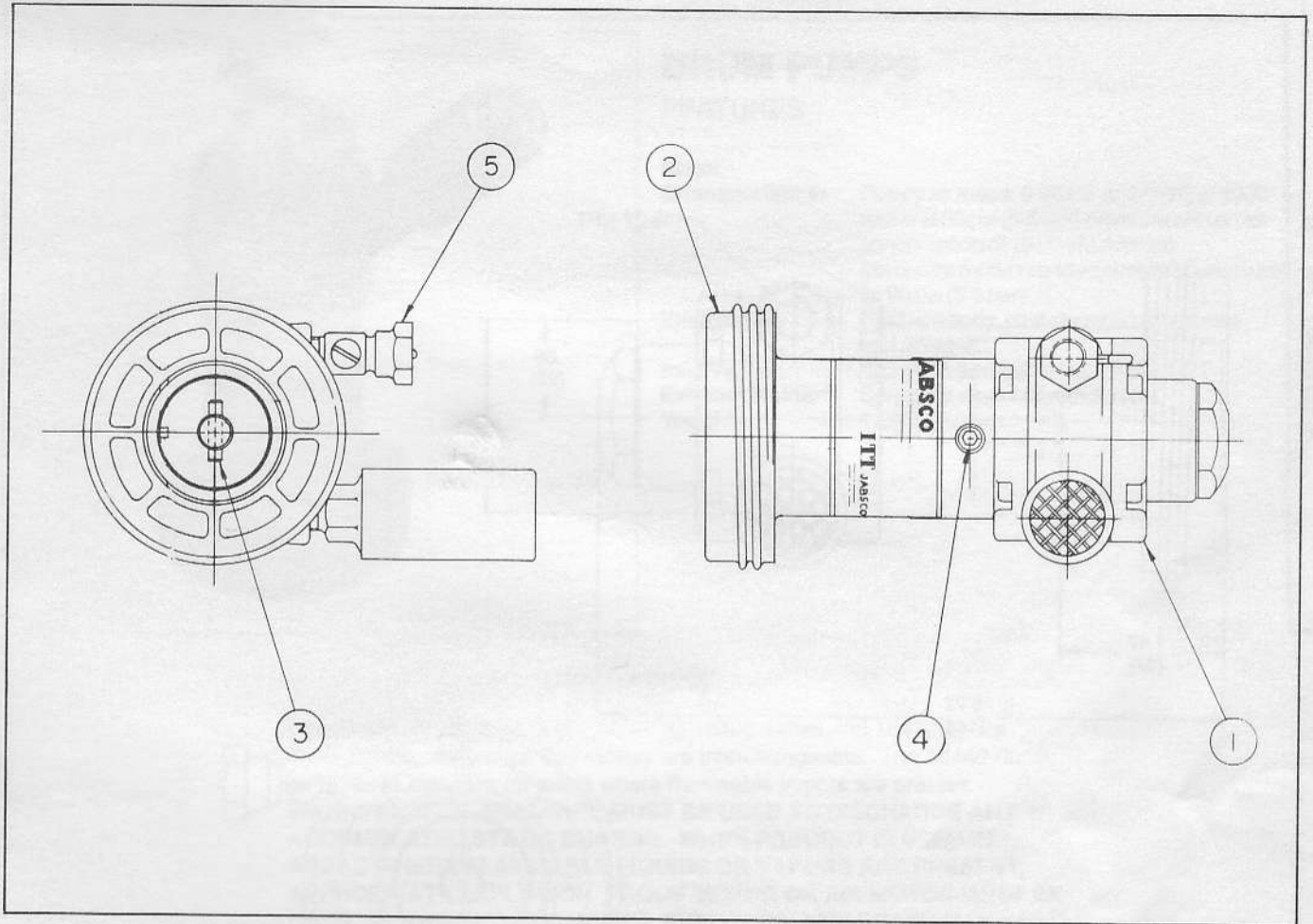
### Disassembly

1. Remove the two hex socket set screws holding the adaptor to the motor sub-assembly.
2. Remove the air inlet valve.
3. Further disassembly is not recommended. Send the unit to a factory authorized service center or the factory for further service.

### Assembly

1. Install the air inlet valve.
2. Install adaptor to air motor and secure it with the two set screws.

### CROSS SECTION VIEW

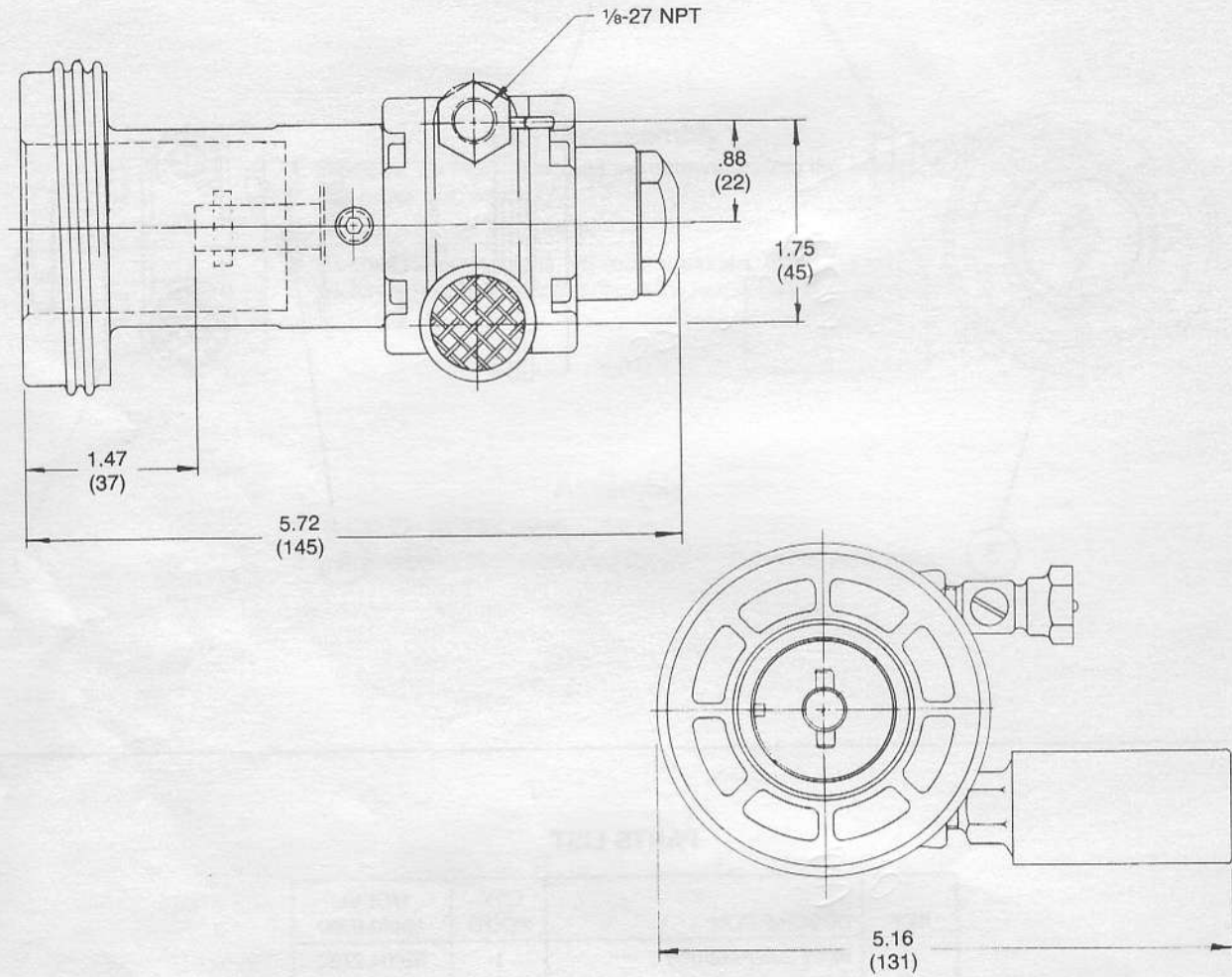


### PARTS LIST

KEY	DESCRIPTION	QTY. REQ'D	MODEL 16440-0000
1	Motor Sub-Assembly	1	93004-2792
2	Adaptor	1	16443-0000
3	Drive Pin	1	93100-0228
4	Hex Socket Set Screw	2	91084-0171
5	Inlet Valve	1	98024-0079



**DIMENSIONAL DRAWING**  
**INCHES (MILLIMETRES)**



**PERFORMANCE TABLES**

Refer to 16400-series/16410-series JABSCO drum pump data sheet (form 43000-0467) for motor-pump performance charts.

THE PRODUCTS DESCRIBED HEREIN ARE SUBJECT TO THE JABSCO ONE YEAR LIMITED WARRANTY, WHICH IS AVAILABLE FOR YOUR INSPECTION UPON REQUEST.

**ITT JABSCO**

A Unit of ITT Corporation  
1485 Dale Way, P.O. Box 2158  
Costa Mesa, CA 92628-2158  
Telephone: (714) 545-8251