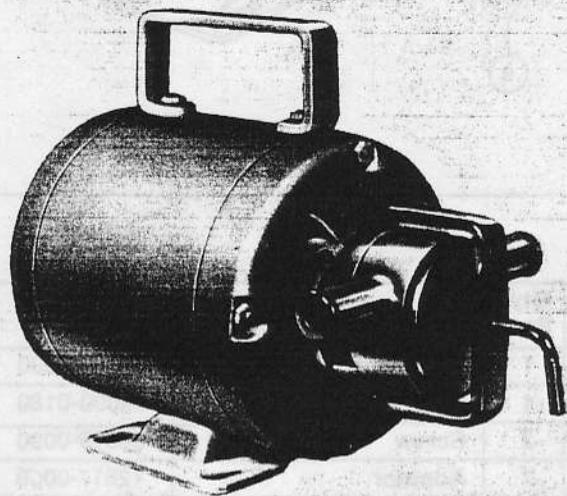


MODEL 12810-0901

PRODUCT DATA



MODEL 12810-0901

DESIGN FEATURES

- Body: Type 316 Stainless Steel, Polished
- Impeller: Special Nitrile Compound
- Seal: Lip Type
- Ports: 3/4" OD-Slip on Hose Connection
- Motor: 1/6 HP, 1725 RPM, Single Split Phase, 60 Cycle, Totally Enclosed non vent with Handle, 6 ft. Cord and 3 Prong Grounded Plug, 115V A.C.
- Weight: 19 lbs. (approximately)

MODEL 12810-0901

APPLICATIONS & OPERATING INSTRUCTIONS

Some of the many diverse products handled by JABSCO Pumps include: DAIRY PROCESSING — Buttermilk, Condensed Milk, Cream, Milk, and other assorted dairy products. BEVERAGE PROCESSING — Alcohols, Beers, Brewery Slop, Cider, Distillery Wort, Extracts, Flavor Bases, Juices, Soft Drinks, Wines. MISCELLANEOUS — Chemicals, Cosmetics, Pharmaceuticals.

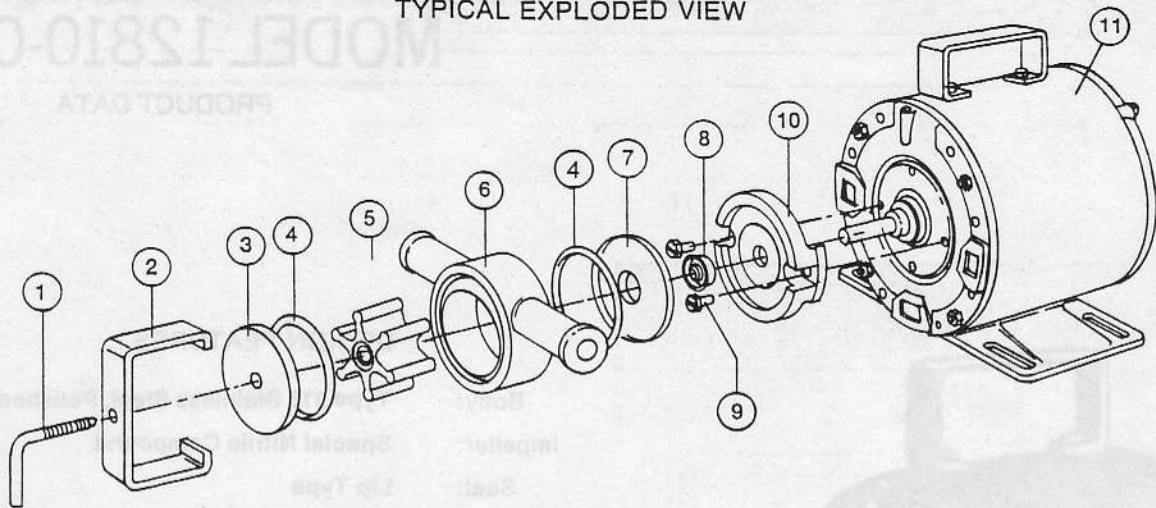
1. INSTALLATION — Pump may be mounted in any position. Pump head rotates 360° to permit desired port location. With ports in upper horizontal position, intake port is on the right when looking at the pump head. If pump is mounted vertically, head should face downward to prevent spillage from entering motor.
2. SELF-PRIMING — Vertical dry suction lifts up to 15'. Pump will produce up to 22' of lift when wet. Intake line connection must be air tight to prevent product foaming and assure self-priming. Keep suction line as short as practical.
3. RUNNING DRY — The impeller is lubricated by the product being pumped. DO NOT RUN DRY FOR MORE THAN 30 SECONDS. Lack of lubricant will damage impeller.
4. TEMPERATURE — Special nitrile compound temperature range 50° to 180° F. Self-priming ability is reduced at lower end of temperature range.
5. PRESSURE — For continuous operation, pressure should not exceed 20 PSI.
6. VISCOUS PRODUCTS — Because motor speed is 1725 RPM highly viscous products can not be handled. Viscosity should be limited to 500 to 700 SSU. For more viscous product transfer, select a pedestal mounted Pureflo® pump which may be run at low speed.
7. CLEANING — Pump is designed for quick take-apart for ease of cleaning. All parts are highly polished to maintain cleanability. Care should be exercised when cleaning so that parts are not nicked or scratched.

CAPACITY CHART

| TOTAL HEAD | | 1725 RPM |
|------------------|--------------|----------|
| Lbs. per Sq. In. | Ft. of Water | GPM |
| 4.3 | 10 | 5.0 |
| 8.7 | 20 | 4.6 |
| 13.0 | 30 | 4.1 |
| 17.3 | 40 | 3.5 |
| 21.6 | 50 | 2.8 |

Table shows approximate capacity of new pump in U.S. gallons per minute of water.

TYPICAL EXPLODED VIEW



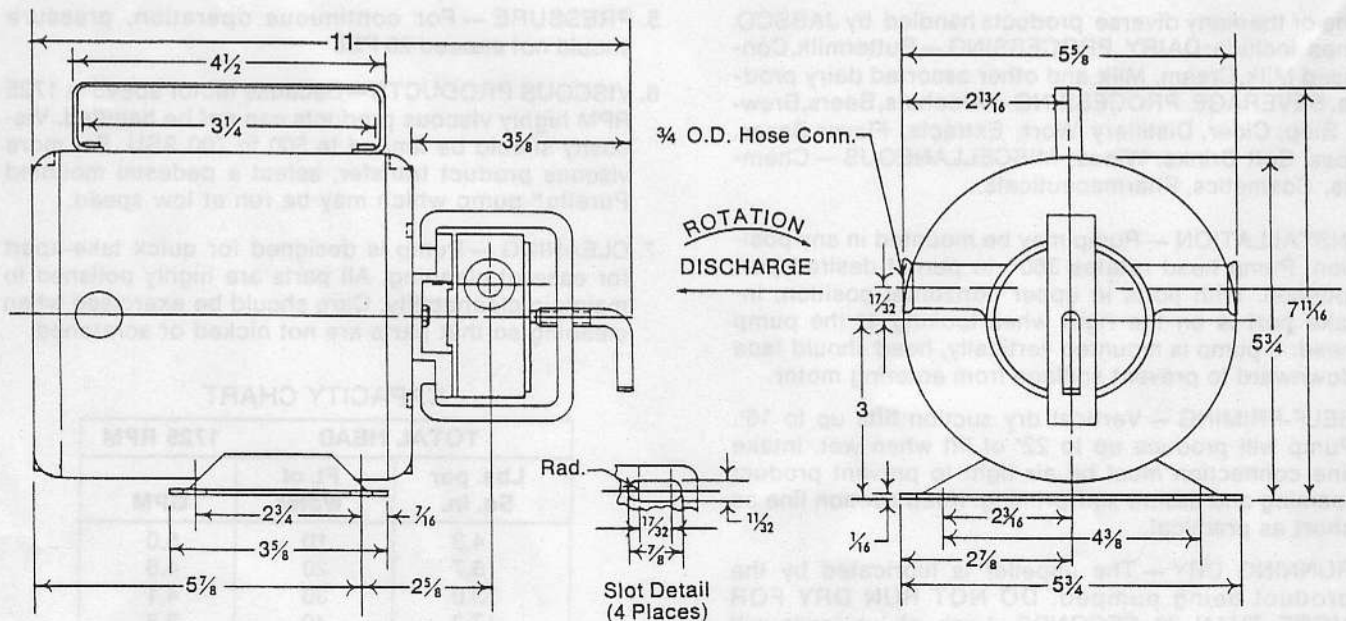
PARTS LIST

| Key | Qty. Req. | Description | Part No. |
|-----|-----------|---------------------|------------|
| 1 | 1 | Clamp Screw | 12813-0000 |
| 2 | 1 | Clamp | 12818-0000 |
| 3 | 1 | End Cover | 12815-0000 |
| 4 | 2 | *"O" Ring | 92000-0900 |
| 5 | 1 | *Impeller 7273-0003 | 12722-0006 |
| 6 | 1 | Body | 12814-0000 |

| Key | Qty. Req. | Description | Part No. |
|-----|-----------|-------------|------------|
| 7 | 1 | Wearplate | 12816-0000 |
| 8 | 1 | *Seal | 93000-0180 |
| 9 | 2 | Screw | 98019-0090 |
| 10 | 1 | Adaptor | 12817-0000 |
| 11 | 1 | Motor | 93004-1600 |
| - | - | Service Kit | 90163-0006 |

*Parts Contained in Service Kit

DIMENSIONAL DRAWING



JABSCO PRODUCTS

A Unit of International Telephone and Telegraph Corporation / 1485 Dale Way, Costa Mesa, California 92626

Telephone: (714) 545-8251