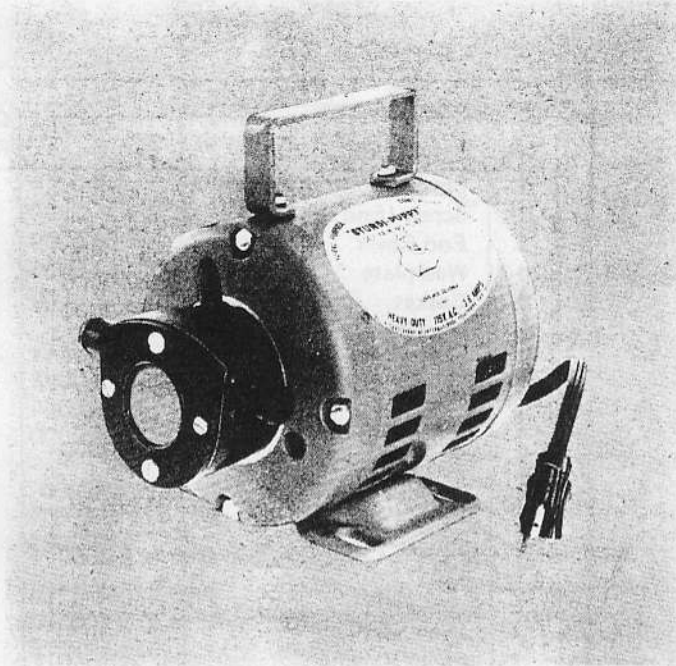


JABSCO® PUMPS

Self-Priming Pumps

MODEL: 12290-0001

Product Data
Formerly P6-M6



MODEL: 12290-0001

DESIGN FEATURES

| | |
|-----------|--|
| Body: | Phenolic Plastic |
| Impeller: | Neoprene |
| Seal: | Lip Type |
| Ports: | 5/8" O.D. for Hose Connections |
| Shaft: | Shaft of Motor (Stainless Steel) |
| Motor: | 115 volt AC, 1/6 H.P., 1750 RPM, 60 cycle, relay start and thermal over-load protector |
| Weight: | 12 lbs.(approx.) (5.4 kg) |

VARIATIONS AVAILABLE

| MODEL | VARIATION |
|------------|--|
| 12290-0003 | Nitrile Impeller |
| 12290-0004 | Viton Impeller and Seal |
| 12290-0271 | Neoprene Impeller; Totally Enclosed Motor |
| 12290-0274 | Viton Impeller and Seal; Totally Enclosed Motor |
| 12970-0004 | Viton Impeller and Seal; Explosion Proof Motor |

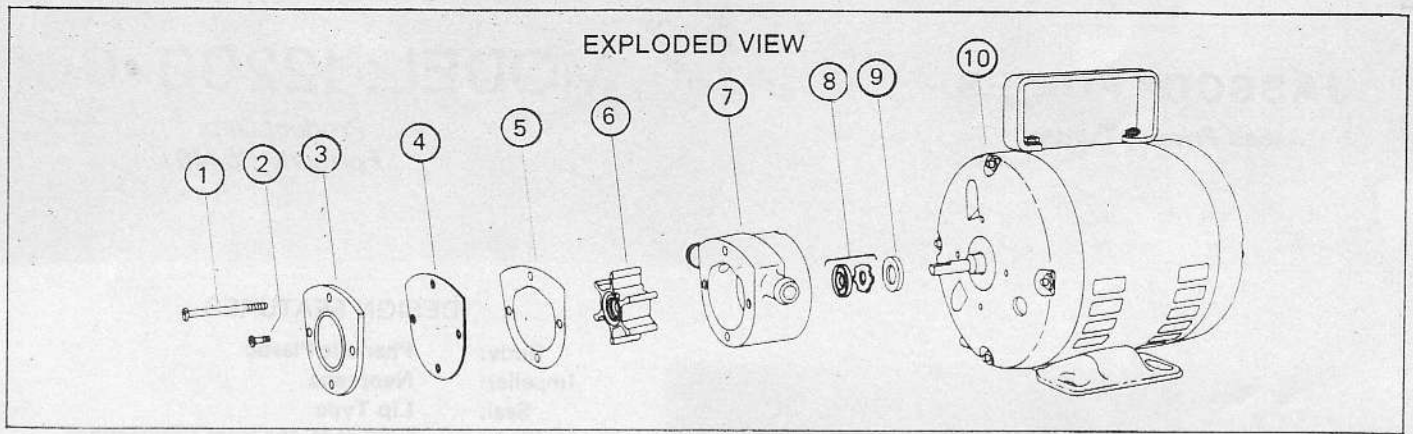
APPLICATIONS & OPERATING INSTRUCTIONS

Designed as a low cost pump for: "transfers", "circulation", "spill returns", "filtration" and "filling line" use. Easily handles pure solutions, foaming liquids, emulsions, suspended solids, gels and ferments. Because the plastic pump is resistant to corrosion and metallic contamination, it is widely used for pumping photo chemicals, plating compounds, lab solutions, pharmaceuticals, cosmetics, weak acids, alkalies, liquid fertilizers, insecticides, dyes, detergents, waxes and many more.

See the JABSCO Pump "Chemical Resistance Table" in the Industrial Catalog, which has been prepared to help you select the most suitable impeller and pump material.

1. INSTALLATION—Pump may be mounted in any position. Intake port is on right when viewing end cover.
2. SELF-PRIMING—Vertical dry suction lift of 10 feet (3m). Pump will produce suction lift up to 22 feet (6.7m) when wetted. BE SURE SUCTION LINES ARE AIR TIGHT OR PUMP WILL NOT SELF-PRIME.
3. DISCHARGE LINE—When transferring liquids further than 25 feet (7.6m), use 3/4 inch (17.5mm) discharge line.
4. RUNNING DRY—Unit depends on liquid pumped for lubrication. DO NOT RUN DRY FOR MORE THAN 30 SECONDS. Lack of liquid will burn the impeller and damage the plastic components.
5. CAUTION—If corrosive fluids are handled, pump life will be prolonged, if flushed with water after each use or after each work day. Consult JABSCO Pump Chemical Resistance Table in the Industrial Catalog. For further information, contact factory.
6. PRESSURES—For continuous operation, pressure should not exceed 15 PSI (1.05 kg/sq cm).
7. TEMPERATURES—Impellers are suitable for service as follows: Neoprene impeller 45° to 180°F (4.4° to 82.2°C), Nitrile impeller 50° to 180°F (10° to 82.2°C) and Viton impeller 60° to 180°F (15.6° to 82.2°C).
8. SPARE PARTS—A Jabsco Service Kit should be kept on hand to maintain all but the most badly worn pumps.

JABSCO PRODUCTS **ITT**



SERVICE INSTRUCTIONS

DISASSEMBLY

1. Remove end cover screws, end cover, wearplate and gasket.
2. Remove impeller.
3. Remove body.
4. Pry seal retainer from seal cavity and press seal out of cavity from impeller bore side.

NOTE: Inspect all parts for wear or damage and replace if necessary.

ASSEMBLY

1. Press seal into seal cavity with lip towards impeller bore, until it bottoms firmly against shoulder. Center seal retainer (concave side up) in seal cavity and press firmly against seal, using 11/16" dia. dowel.
2. Install body on motor shaft loosely.
3. Install impeller in lubricated impeller bore.
4. Lubricate impeller face.
5. Install gasket, wearplate and end cover on body and secure with short screws.
6. Secure body to motor with long screws.

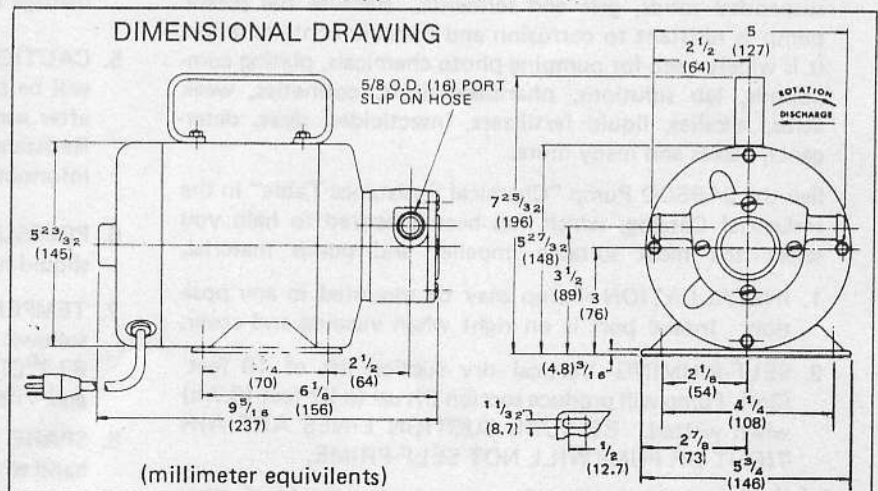
PARTS LIST

| Key | Description | Part No. | Qty. Req. |
|-----|---|------------|-----------|
| 1 | Screw (Body to Motor) | 91014-0010 | 2 |
| 2 | Screw (End Cover) | 91014-0020 | 2 |
| 3 | End Cover | 12555-0000 | 1 |
| 4 | Wearplate | 12557-0000 | 1 |
| 5 | *Gasket | 12558-0000 | 1 |
| 6 | *Impeller | | 1 |
| | Neoprene | 7273-0001 | |
| | Nitrile | 7273-0003 | |
| | Viton | 7273-0004 | |
| 7 | Body | 12554-0000 | 1 |
| 8 | *Seal | | 1 |
| | Standard | 1040-0000 | |
| | Viton | 1040-0001 | |
| 9 | Slinger | 879-0000 | 1 |
| 10 | Motor | | 1 |
| | Standard | 93004-0790 | |
| | Explosion Proof | 93004-0920 | |
| | Totally Enclosed | 93004-1570 | |
| | Replacement Pump Head w/Neoprene Impeller | 12590-0011 | |
| | w/Nitrile Impeller | 12590-0003 | |
| | w/Viton Impeller | 12590-0021 | |
| | Service Kit | | |
| | w/Neoprene Impeller | 90126-0002 | |
| | w/Nitrile Impeller | 90126-0013 | |
| | w/Viton Impeller | 90126-0004 | |

*Parts supplied in Service Kit

| CAPACITY CHART | | | | |
|------------------------------|------------------------|----------|---------|--|
| TOTAL HEAD | | 1750 RPM | | |
| P.S.I. (Kg/cm ²) | Feet of Water (Meters) | GPM | (L/min) | |
| 4.3 (.30) | 10 (3.0) | 5.8 | (22) | |
| 8.7 (.61) | 20 (6.1) | 5.0 | (18.9) | |
| 13.0 (.91) | 30 (9.1) | 3.8 | (14.4) | |

Table shows approximate Head-Flow for new pump in U.S. Gallons (and liters) with Neoprene Impeller. Capacities reduced approximately 10% with Nitrile or Viton Impellers.



JABSCO PRODUCTS ITT

Marine and Recreation Components Division
International Telephone and Telegraph Corporation
1485 Dale Way, Costa Mesa, California 92626

Telephone: (714) 545-8251