

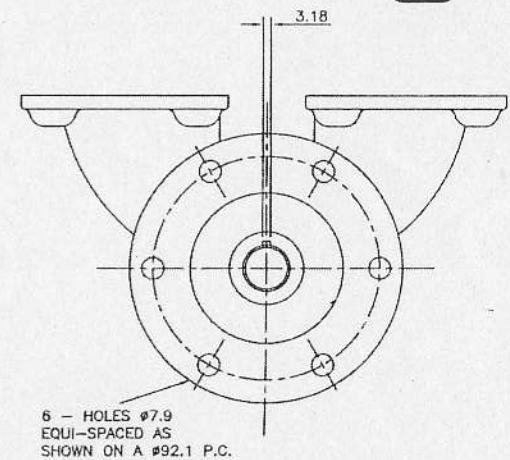
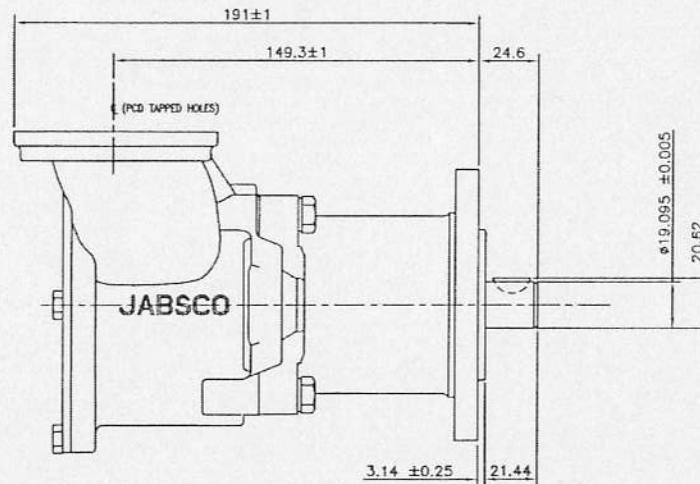
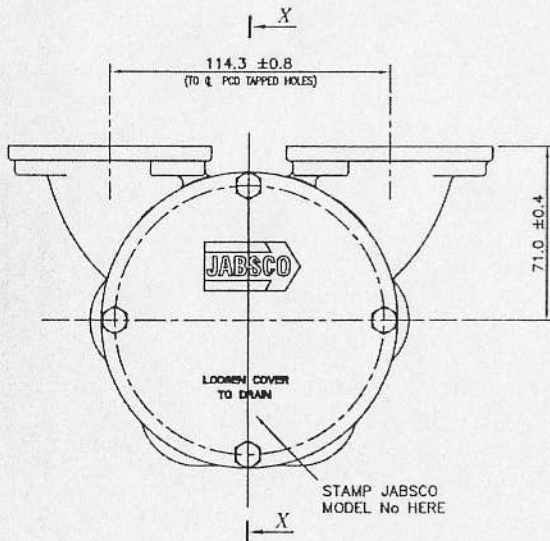
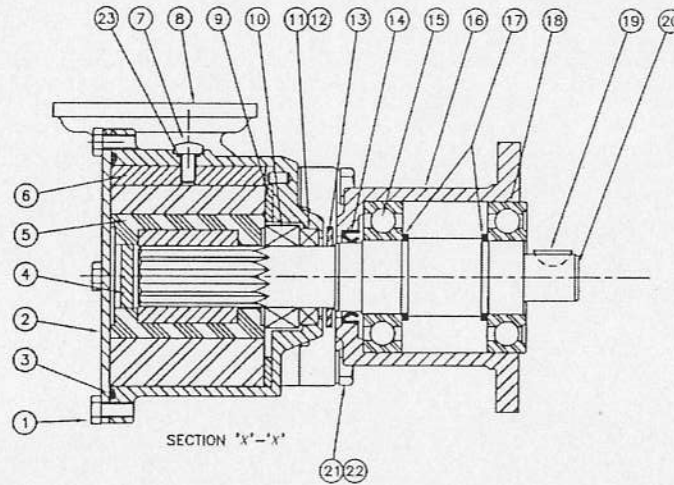
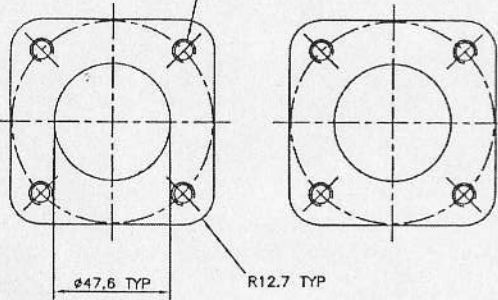
ALL DIMENSIONS IN MILLIMETRES

KEY	DESCRIPTION	QTY.	KEY	DESCRIPTION	QTY.
1	END COVER SCREW	5	15	BEARING	1
2	ENDCOVER	1	16	BEARING HOUSING	1
3	O-RING	1	17	CIRCLIP	2
4	SPLINE PLUG	1	18	BEARING	1
5	IMPELLER	1	19	KEY	1
6	CAM	1	20	SHAFT	1
7	CAM SCREW	1	21	HEX HEAD SCREW	4
8	BODY	1	22	SPRING WASHER	4
9	WEAR PLATE	1	23	O-RING	1
10	MECHANICAL SEAL	1	24		
11	SEAL CUP	1	25		
12	CUP RUBBER	1	26		
13	SLINGER	1	27		
14	LIPSEAL	1	28		

ASSEMBLY INSTRUCTIONS 22029

11790-0161

4 - HOLES TAPPED 3/8-16 UNC  
EQUI-SPACER ON A  $\phi 82.6$  P.C.  
TYP FOR BOTH FLANGES



SIZE 200 (50 GALL) BRONZE FLANGE MOUNTED COMPOSITE PUMP

<p>NOTICE</p> <p>THIS DRAWING IS THE PROPERTY OF ITT JABSCO. IT IS TO BE USED FOR THE MANUFACTURE OF THIS PUMP ONLY. IT IS NOT TO BE REPRODUCED OR TRANSMITTED IN ANY FORM OR BY ANY MEANS, ELECTRONIC OR MECHANICAL, INCLUDING PHOTOCOPYING, RECORDING, OR BY ANY INFORMATION STORAGE AND RETRIEVAL SYSTEM, WITHOUT THE WRITTEN PERMISSION OF ITT JABSCO.</p>		<p>REMOVE SHAFT, PUMP FLANGE &amp; IMPELLER FROM CASTING, FORMWORK &amp; MECHANICAL PART TO BE FREE OF BURRS, SCALING AND UNIFORM OTHER SURFACE.</p>		<p>DO NOT SCALE - REPORT ERRORS</p>		<p>ITT Jabsco</p>		<p>REVISIONS HEREIN ENCLOSED</p>	
<p>SCALE: 1:1</p>		<p>DATE: 3/12/85</p>		<p>MATERIAL: -</p>		<p>TITLE: INSTALLATION/ASSEMBLY</p>		<p>DRAWING NO.: 11790-0101</p>	
<p>DRAWN: J N R</p>		<p>CHECKED: -</p>		<p>APPROVED: -</p>		<p>PROJECT: -</p>		<p>A1</p>	