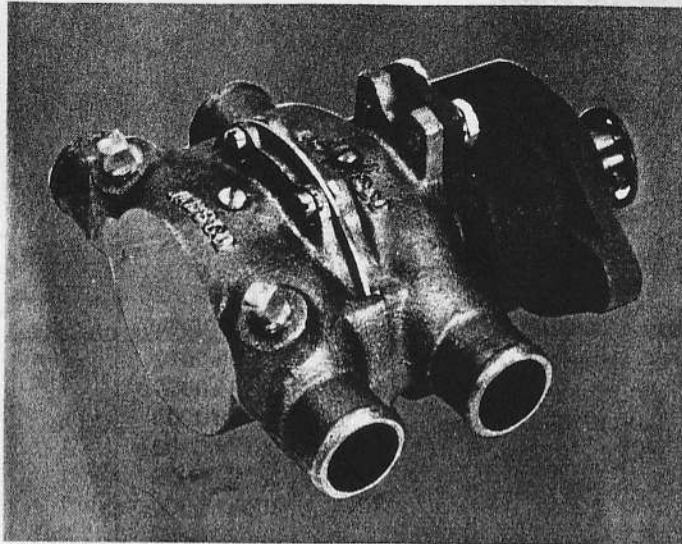


JABSCO® PUMPS

Self-Priming Pumps

MODEL: 10190-0011

Product Data



MODEL: 10190-0011

DESIGN FEATURES

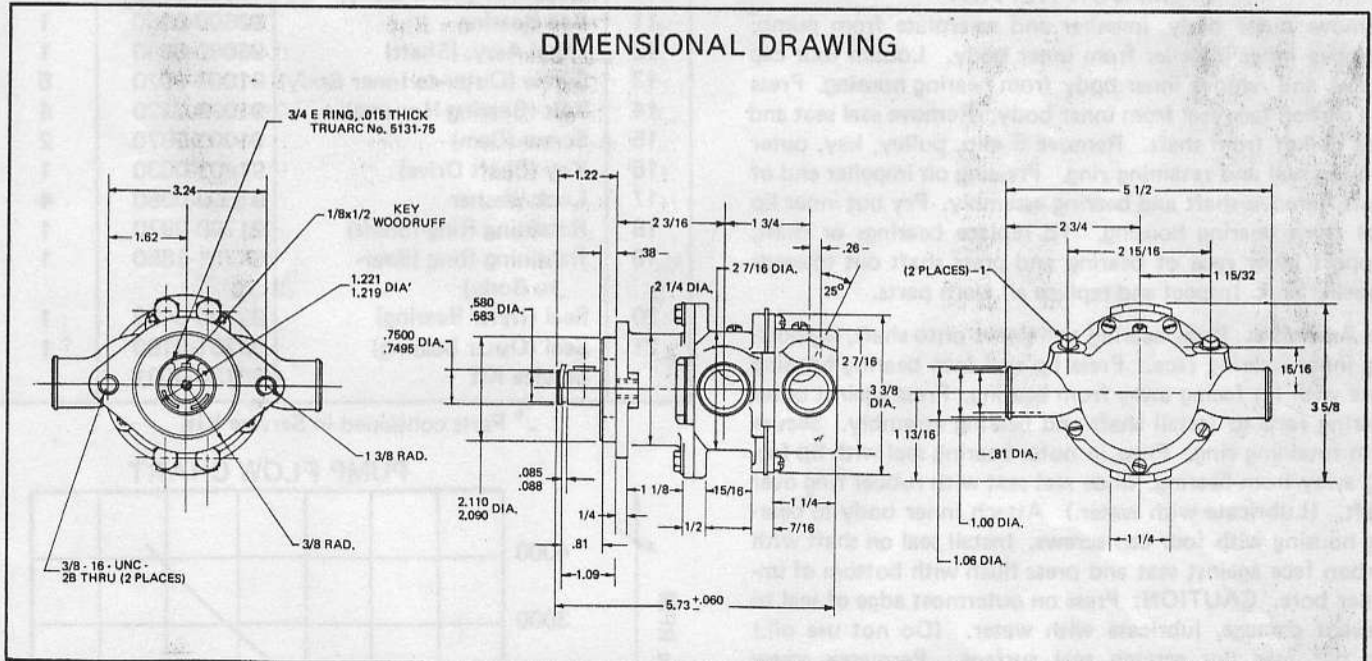
- Body: **Bronze**
- Impeller: **Jabco Neoprene Compound**
- Shaft: **Bronze**
- Shaft Seal: **Carbon Ceramic Face-Type**
- Ports: **1" Hose Connections**
- Weight: **Approx. Shipping Wt. 6½ lb.**

APPLICATION

Marine Engine Cooling

For Chrysler Engines
Series 318 A-B-C, 383, 413
M225A, D; MH225D? M318A,
B, C, M383B

DIMENSIONAL DRAWING



INSTALLATION INSTRUCTIONS

Mount pump on engine bracket. Make sure pump pulley is aligned with drive pulley and snap ring securely in place. Tighten belt by moving bracket. Allow about 1/2 movement in belt when tightened. Do not overtighten, connect inlet and outlet hoses, clamp securely on ports.

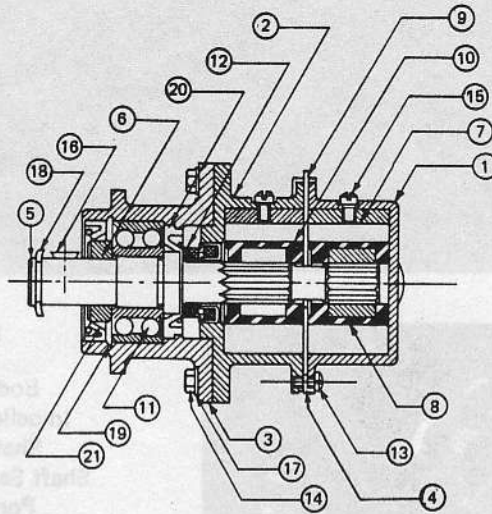
OPERATING INSTRUCTIONS

Pump will self prime at low or high speeds. Make sure scoop and inlet line are clear and all connections air tight. Do not run pump dry for more than 30 seconds. Lack of water flow may damage impeller. To drain pump, loosen end cover screws.

JABSCO PRODUCTS ITT

MODEL: 10190-0011

EXPLODED VIEW



MODEL: 10190-0011

SERVICE INSTRUCTIONS

Impeller Replacement: Remove outer body and gasket. Pull impeller out by grasping hub or blades with pliers. Remove wearplate, gasket and inside impeller. Replace impeller (10 blade), gasket and wearplate. Insert second impeller (12 blade) in outer body, place gasket on body. Push assembly onto shaft, lining up splines. A light coating of grease in impeller bores will aid priming on dry start up. (Use correct Jabsco gasket. A thicker or thinner gasket may cause impeller damage.) Standard gasket is .010" thick.

MAJOR REPAIR

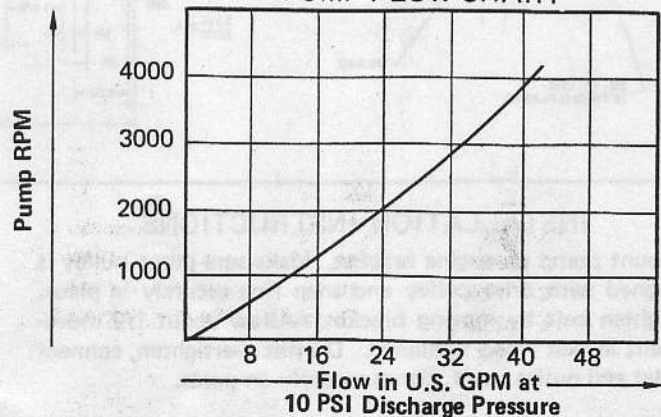
Remove outer body, impeller and wearplate from pump. Remove inner impeller from inner body. Loosen four cap screws and remove inner body from bearing housing. Press out carbon face seal from inner body. Remove seal seat and seat gasket from shaft. Remove E clip, pulley, key, outer bearing seal and retaining ring. Pressing on impeller end of shaft, remove shaft and bearing assembly. Pry out inner lip seal from bearing housing. To replace bearings or shaft, support inner race of bearing and press shaft out towards impeller end. Inspect and replace all worn parts.

To Assemble: Press bearing and sleeve onto shaft, supporting inner bearing race. Press lip seal into bearing housing bore with lip facing away from bearing. Press against outer bearing race to install shaft and bearing assembly. Secure with retaining ring. Press in outer bearing seal with lip facing away from bearing. Slide seal seat with rubber ring over shaft. (Lubricate with water.) Attach inner body to bearing housing with four cap screws. Install seal on shaft with carbon face against seat and press flush with bottom of impeller bore. **CAUTION:** Press on outermost edge of seal to prevent damage, lubricate with water. (Do not use oil.) Do not mar nor scratch seal surface. Permatex screw threads, topside of cams and install in body with cam screw. Lubricate impeller bore with a light coat of water pump grease and start impeller (10 blade) into bore with a rotary motion until splines engage, then push into bore. Install gasket and divider plate. Push outer impeller (12 blade) into outer body with rotary motion. Place outer gasket in position on wearplate. Secure outer body. Tighten both (2) cam screws. Install key, pulley and E clip.

Key	Description	Part Number	Qty.
1	Body (Outer)	10195-0010	1
2	Body (Inner)	10194-0000	1
3	Bearing Housing	10178-0000	1
4	Wearplate	10179-0000	1
5	Shaft	10197-0000	1
6	Sleeve	10181-0000	1
7	Cam	490-0000	2
8	*Impeller (Outer Body)	1210-0001	1
9	*Gasket (O. B.)	10183-0000	2
10	*Impeller (Inner Body)	3085-0001	1
11	Ball Bearing	92600-0060	1
12	*Seal Assy. (Shaft)	96080-0080	1
13	Screw (Outer to Inner Body)	91003-0020	5
14	Bolt (Bearing Housing)	91095-0320	4
15	Screw (Cam)	91003-0070	2
16	Key (Shaft Drive)	91401-0030	1
17	Lock Washer	91602-0060	4
18	Retaining Ring (Shaft)	91700-2970	1
19	Retaining Ring (Bearing to Body)	91701-1850	1
20	Seal (Inner Bearing)	92700-0480	1
21	Seal (Outer Bearing)	92701-0160	1
	Service Kit	90134-0001	

* Parts contained in Service Kit.

PUMP FLOW CHART



JABSCO PRODUCTS ITT

Marine and Recreation Components Division, International Telephone and Telegraph Corporation
1485 Dale Way, Costa Mesa, California 92626