

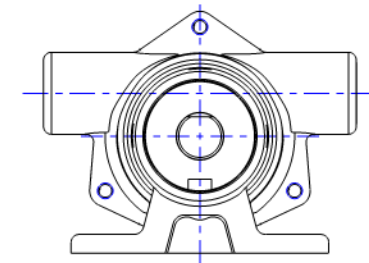
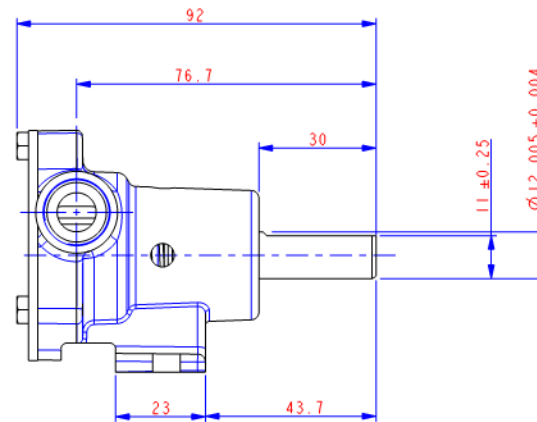
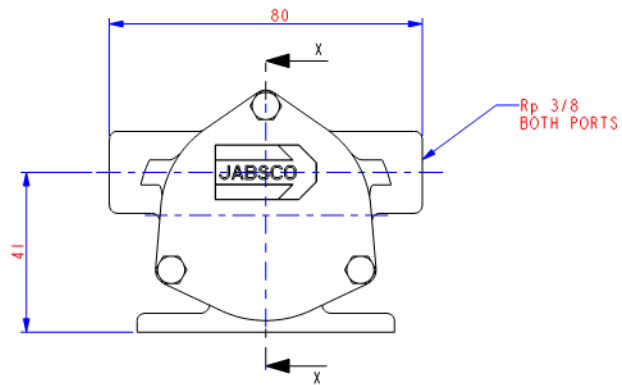
SECTION X-X

KEY	DESCRIPTION	PART NUMBER	QTY
1	BEARING - BALL	SP2601-0457H	2
2	BEARING SHIELD	51516-0000	1
3	BODY (FULL CAM)	51514-2000	1
4	END COVER	29305-0100	1
5	HEX HEAD SCREW M4 x 8	X3001-095F	3
6	IMPELLER 010	22405-0101	1
7	MECHANICAL SEAL	96080-6024	1
8	O RING (2.4 x 44.6)	X4020-244A	1
9	RETAINING RING - EXTERNAL	SP1701-4440	1
10	RETAINING RING - INTERNAL	SP1701-4438	1
11	SHAFT 010	51517-0000	1
12	SOCKET SET SCREW M4 x 20	SP1009-05	1
13	SUPPORT WASHER	51515-0000	1

ITEMS BELOW NOT SHOWN BUT ARE REQUIRED

CARTON	PC100-0005	1
LABEL - CARTON	23007-4546	1
DATA SHEET	43000-0776	1
DATA SHEET - FIP IOM	43000-0793	1

REF. DOCUMENTS:
 ES 00-5332-010 ENGINEERING SPECIFICATION.
 23700-0197 ASSEMBLY INSTRUCTIONS
 23400-0089 TEST INSTRUCTIONS.



PUMP ASSEMBLY SIZE 010

NOTE
 END COVER SCREWS TO BE TIGHTENED
 TO A TORQUE OF 1.5 - 1.8 NM

D	002036	05/02/08
C	001858	15/12/07
ISSUE	ECN No.	DATE

Jabsco BINGLEY ROAD, HODDERSDON HERTS, EN11 0BU, ENGLAND (0)11992 450145 www.jabsco.com	UNLESS OTHERWISE STATED DIMENSIONS ARE IN MM TOLERANCES UNLESS OTHERWISE STATED ARE: X DECIMALS ± X.X ± X.XX ± ANGULAR ± °	SCALE: 1.000	 MATERIAL:	DRAWN: J N R 23/11/01 TITLE: INSTALLATION / ASSEMBLY	 2002
		CHKD/APPD: B. STOCK 17/12/01 DRAWING NO.: 51510-2001			