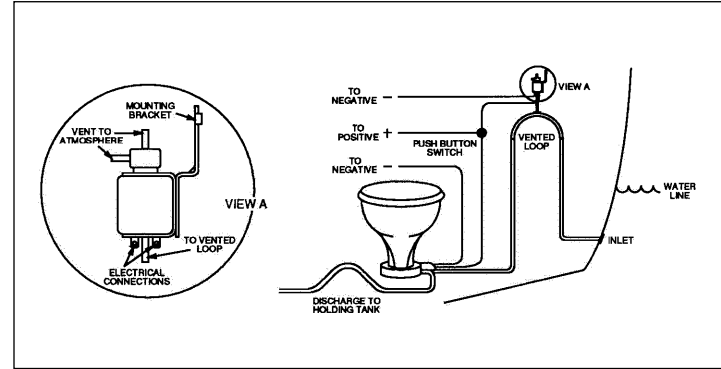


37068-0000 – VENTED LOOP SOLENOID VALVE

APPLICATION – INSTALLATION

To ensure maximum electric toilet performance and primability when installing a vented loop in the inlet hose, it is recommended that a Vented Loop Solenoid Valve (37068-0000) is connected to the vent air inlet. The valve may be mounted in any convenient location which is higher than the top of the vented loop. Connect the brass port of the valve (remove plastic filter, if installed) with the air inlet of the vented loop using heavy-wall 3/16" tube. Ensure tubing drops continually from valve to vent and is not looped (to create water pockets) or kinked. Wire the solenoid valve in parallel with the toilet motor by connecting one side of the solenoid to the toilet flush switch and the other side to battery ground.



NOTICE: Solenoid valve may be used for 12, 24, or 32 Volts D.C. However, it is not recommended for duty cycles longer than one minute when used in the 24 or 32 Volt applications. Longer duty cycles can damage solenoid.

Jabsco



ITT Industries

Engineered for life

U.S.A
ITT Jabsco

UNITED KINGDOM
ITT Jabsco

CANADA
ITT Fluid Products

JAPAN
NHK Jabsco Company Ltd.

GERMANY
MINTEC GmbH



THE PRODUCT DESCRIBED HEREIN IS SUBJECT TO THE JABSCO ONE YEAR LIMITED WARRANTY, WHICH IS AVAILABLE FOR YOUR INSPECTION UPON REQUEST.