

Model 16420-Series

DRUM PUMP MOTOR

FEATURES

- Built for overload cut-out.
- **CE** conformance where appropriate.
- Available for 115v ac, 1ph, 50/60 Hz and 230v ac, 1ph, 50Hz supply.
- Available with British, US, or European plugs pre-fitted, or without, where regulations permit.
- Fan cooled brush motor housed in aluminum and nylon drip proof enclosure.
- Oversize ON-OFF rocker switch suitable for operating with gloved hand.

APPLICATIONS

Motor for use with Jabsco D100 Series Drum Pumps. Pump Tubes available in Stainless Steel, Polypropylene and Kynar for emptying a wide range of chemicals from drums and containers.



Model 16420-Series

AC MOTOR RANGE

Model No.	Power Supply	F.L. Current	Fuse Size	Plug Fitted	CE Marked
16420-0115	115v ac, 1ph, 50/60Hz, 600 Watts	5.8 Amp	7.5 Amp	USA	No
16420-0115	115v ac, 1ph, 50/60Hz, 600 Watts	5.8 Amp	7.5 Amp	No	No
16420-4115	115v ac, 1ph, 50/60Hz, 600 Watts	5.8 Amp	7.5 Amp	No	Yes
16420-1220	230v ac, 1ph, 50Hz, 540 Watts	2.7 Amp	5.0 Amp	No	No
16420-2220	230v ac, 1ph, 50Hz, 540 Watts	2.7 Amp	5.0 Amp	UK	Yes
16420-3220	230v ac, 1ph, 50Hz, 540 Watts	2.7 Amp	5.0 Amp	European	Yes

PUMP TUBESETS FOR USE WITH THE ABOVE MOTORS

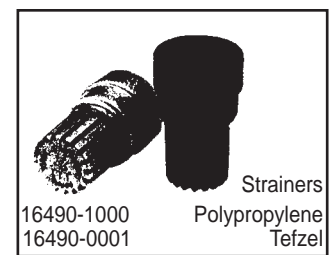
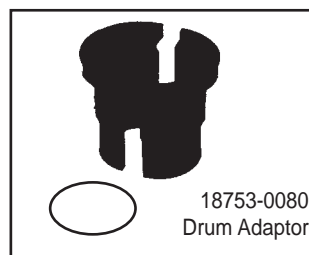
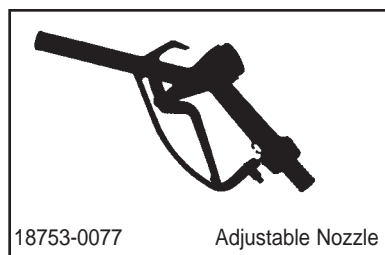
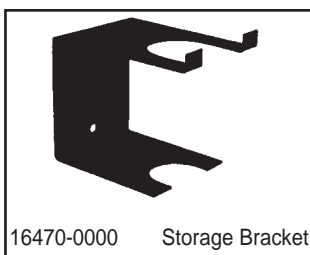
Tube Material	Polypropylene	Stainless Steel	Kynar	Stainless Steel Hygienic
Data Sheet No.	43000-0572	43000-0573	43000-0586	43000-0585

Pump Tubes in these materials are available in 4 lengths:
0.7m (27"), 0.9m (35"), 1.0m (40"), 1.2m (47")

OTHER OPTIONS

- D100 Series Drum Pump Tubesets are also available with Air Driven Motor.
- D30 Series, smaller Drum Pumps are available with Polypropylene and Stainless Steel tubesets in 3 lengths: 0.5m (20"), .0.7m (27"), 1.0m (40"), and with 3 Motor Options: 230v ac, 1ph, 50Hz; 115v ac, 1ph, 50/60Hz; Rechargeable Cordless.

ACCESSORIES



WARNING

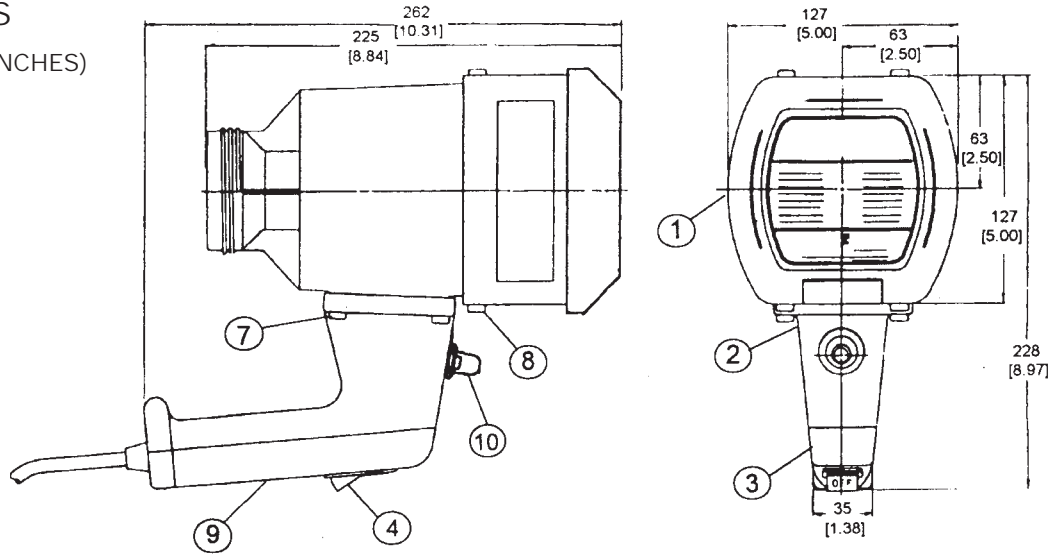
NOTE: ALL ELECTRICAL REPAIR AND WIRING SHOULD BE COMPLETED BY A COMPETENT ELECTRICIAN AND IN ACCORDANCE WITH APPLICABLE CODES. POWER CABLE SHOULD BE INSPECTED PERIODICALLY FOR ANY DETERIORATION. SHOULD ANY FAULT BE EVIDENT THEN REPLACEMENT OF THE CABLE SHOULD BE MADE BY A QUALIFIED ELECTRICIAN.

WARNING

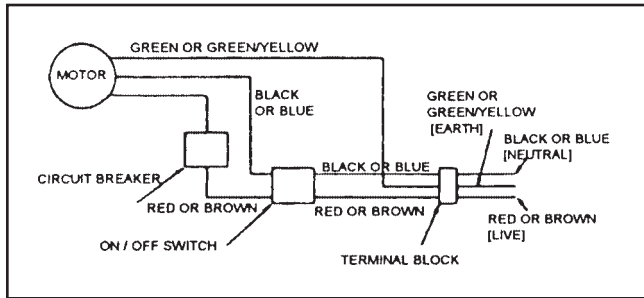
SAFETY WARNING
HAZARDOUS VOLTAGE PRIOR TO ANY DISASSEMBLY OR ASSEMBLY OF THE JABSCO DRUM PUMP MOTOR MAKE CERTAIN THAT ALL ELECTRICAL POWER TO THE MOTOR IS DISCONNECTED AND PREVENTED FROM ACCIDENTALLY BEING CONNECTED. FAILURE TO DO SO MAY CAUSE DEATH OR INJURY.

DIMENSIONS

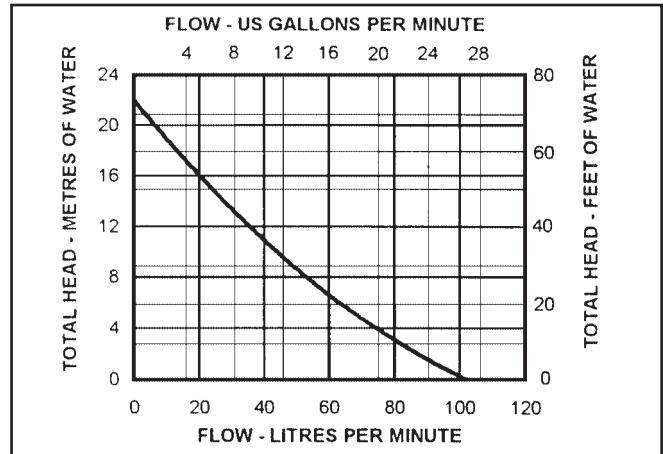
MILLIMETERS (INCHES)



WIRING DIAGRAM



PERFORMANCE

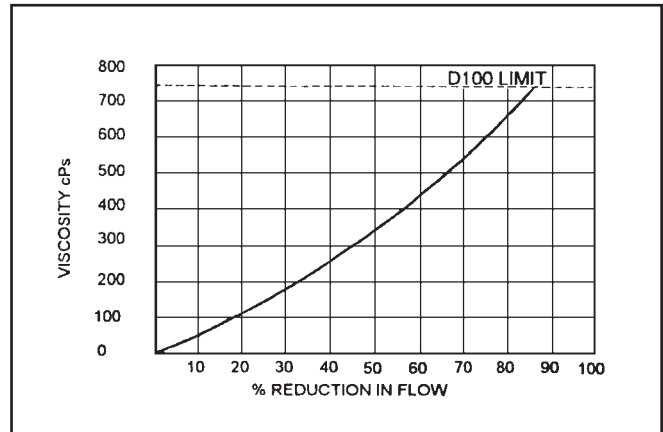


PARTS LIST

KEY	DESCRIPTION	QTY.	6590-SERIES PART NO.
1	Cover	1	16496-0000
2	Handle	1	16428-0000
3	Handle Cover	1	16429-0000
4	Switch	1	18753-0448
5	Screw Motor Handle 5/8 long	4	Motor Screw Kit
6	Screw Motor Handle 3/8 long	4	23642-0200 Contains these screws
7	Screw Handle Cover 1-1/4 long	5	screws
8	Splash Cover	1	X5604-002
	Motor Brush Kit - 115	1	18753-0083
	- 220	1	18753-0084

NOTE: Refer to Safety & Operating Instructions before use. Servicing may only be undertaken by a Competent Service Centre.

VISCOSITY CORRECTION CURVE



Jabsco



U.S.A.
Jabsco
1485 Dale Way, P.O. Box 2158
Costa Mesa, CA 92628-2158
Tel: 714.545.8251
Fax: 714.957.0609

UNITED KINGDOM
Jabsco
Bingley Road, Hoddesdon
Hertfordshire EN11 0BU
Tel: +44 (0) 1992 450145
Fax: +44 (0) 1992 467132

CANADA
Fluid Products Canada
55 Royal Road
Guelph, Ontario N1H 1T1
Tel: (519) 821.1900
Fax: (519) 821.2569

JAPAN
NHK Jabsco Company Ltd.
3-21-10, Shin-Yokohama
Kohoku-Ku, Yokohama, 222
Tel: 045.475.8906
Fax: 045.475.8908

GERMANY
Jabsco GmbH
Oststrasse 28
22840 Norderstedt
Tel: +49-40-53 43 73 -0
Fax: +49-40-53 53 73 -11