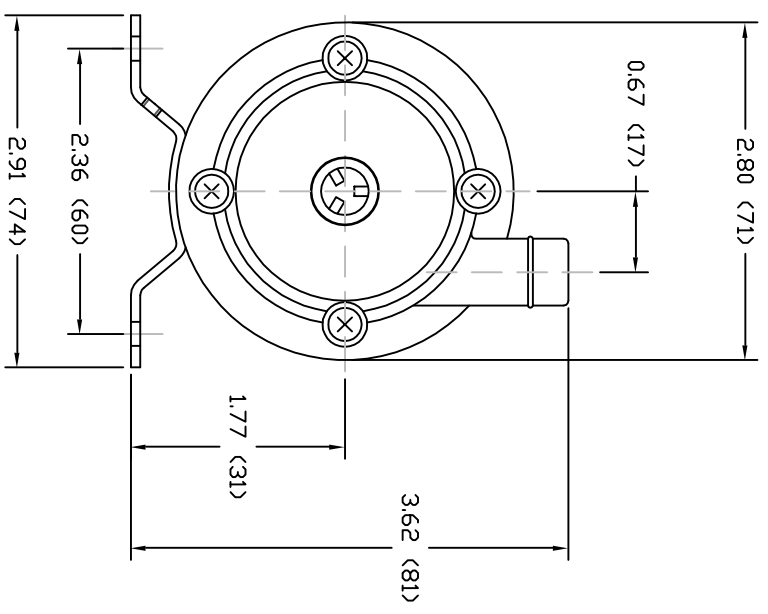
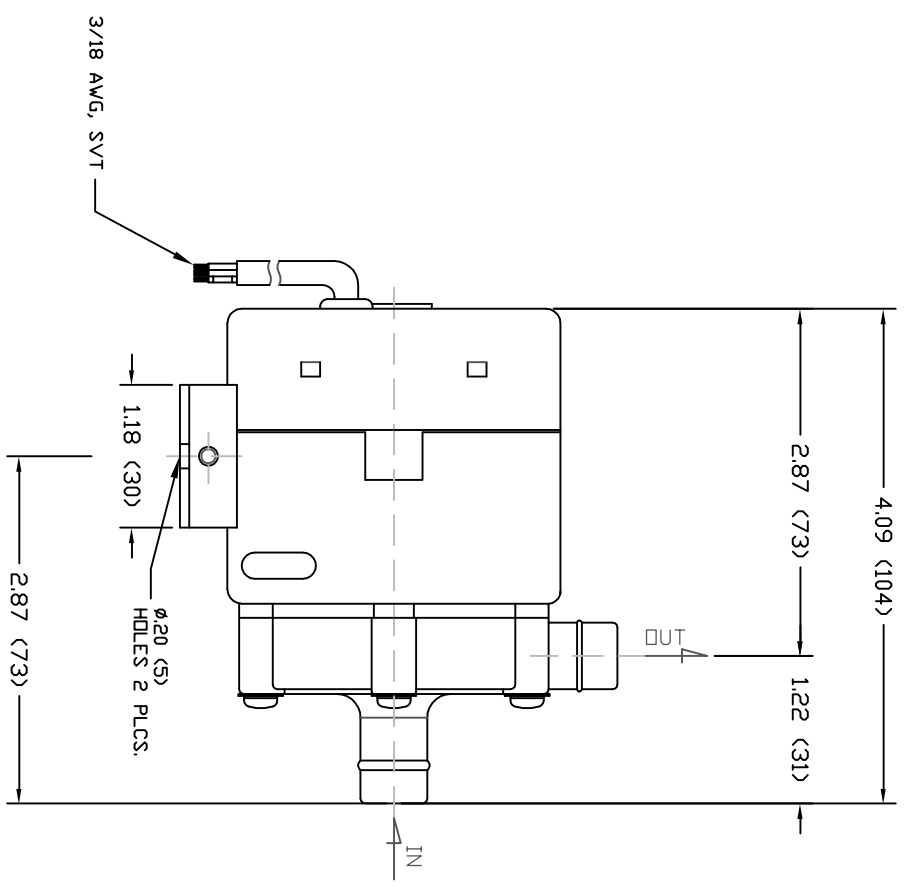


PART OR DRAWING NO. IF20563 REV. A



- NOTES:
1. DRAWING MAY VARY FROM ACTUAL PRODUCT.
 2. REFER TO SPECIFICATIONS C910651 AND C910655.
 3. DRAWN FROM Z2000344 TO SCALE.
 4. DIMENSIONS ARE IN INCHES (MM).

MATERIALS

	SPECIFICATIONS-6L	SPECIFICATIONS-10L
MAX CAPACITY	2.3 GPM (8.7 LPM)	3.1 GPM (11.7 LPM)
MAX HEAD	4.5 FT (1.4 M)	6.8 FT (2.1 M)
MAWP	2.8 PSI (0.2 MPa)	4.3 PSI (0.3 MPa)
VOLTAG	115 VAC	115 VAC
CURRENT	.25 A	.4 A
CORD LENGTH	39.4 IN (1 M)	39.4 IN (1 M)
WEIGHT	1.77 LBS (.8 KG)	1.61 LBS (.73 KG)
SUCTION	1/2 IN HOSE	1/2 IN HOSE
DISCHARGE	1/2 IN HOSE	1/2 IN HOSE

ECO#	DESCRIPTION	DATE	REV. LTR.
	MATERIAL SEE CHART		
GJS	04 03 05 XXX	1	
DRAWN	DAY MO. YR. RELEASED	SHEET NO.	

5 Boynton Rd.
 Hopping Brook Park
 Holliston, MA 01746
 (508) 429-1440
 www.IwakiAmerica.com

TITLE
 MAG DRIVE PUMP
 MD-6L,10L (115V)

PART OR DWG. NO. IF20563

REV. A