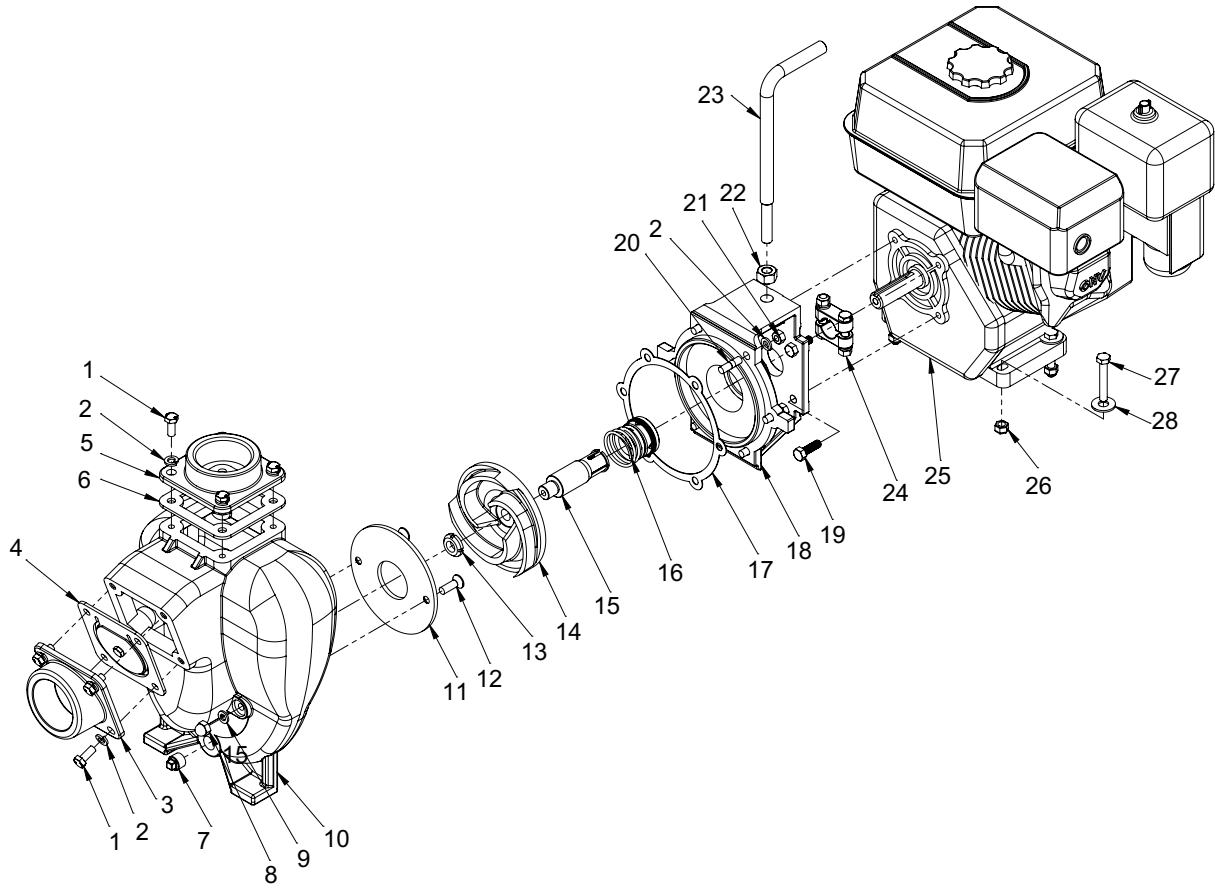


1532C-6SP, 1532C-160HSP, 9232C-SP, and 9732C-SPX Self-Priming Cast Iron Centrifugal Pumps



Ref. No.	Qty.	Part No.	Description
1	8	2210-0160	Cap Screw, 5/16-18
2	14	2260-0051	Lockwasher, 5/16
3	1	2404-0363	Inlet Flange (2" NPT)
4	1	1700-0218	Flapper Valve Assembly
5	1	2404-0362	Discharge Flange (2" NPT)
6	1	1700-0217	Discharge Flange Gasket (EPDM)
7	1	2406-0041	External Square Drain Plug (3/8" NPT)
8	2	2253-0012	Acorn Nut, 5/16-18 SS
9	2	1700-0021	Plastic Washer
10	1	0150-9032C	Self-Priming Chamber
11	1	3210-0094	Wear Plate
12	2	2215-0004	Screw, 5/16-18
13	1	2250-0095	Impeller Nut, 9/16-18
14	1	0400-9032C	Impeller

Ref. No.	Qty.	Part No.	Description
15	1	0501-9032	Shaft Sleeve (3/4")
16	1	2120-0046	Mechanical Seal (FKM), 1"
17	1	1710-0017	Gasket
18	1	0750-9032C	Mounting Flange (Gas Engine)
19	4	2210-0143	Hex Head Bolt
20	6	2205-0021	Stud
21	6	2250-0094	Hex Nut, 5/16-18
22	1	2250-0093	Hex Nut, 7/16-20
23	1	2801-0007	Handle
24	1	1420-0023	Shaft Sleeve Clamp
25	1	2541-0045	6.5 HP PowerPro Engine (1532C-6SP)
	1	2541-0058	Honda GX160 (1532C-160HSP)
26	4	18572-SHW	5/16-18 N.C. Zinc Locknut
27	4	2210-0008	5/16-18 UNC 2A HHCS
28	4	2270-0004	Flat Washer