

**Parts Manual**  
**G10-991-2404B**

# **Hydra-Cell<sup>®</sup>**

## **INDUSTRIAL PUMPS**

**Model: G-10-SD**  
**Slurry Duty Pump**

**IMPORTANT**

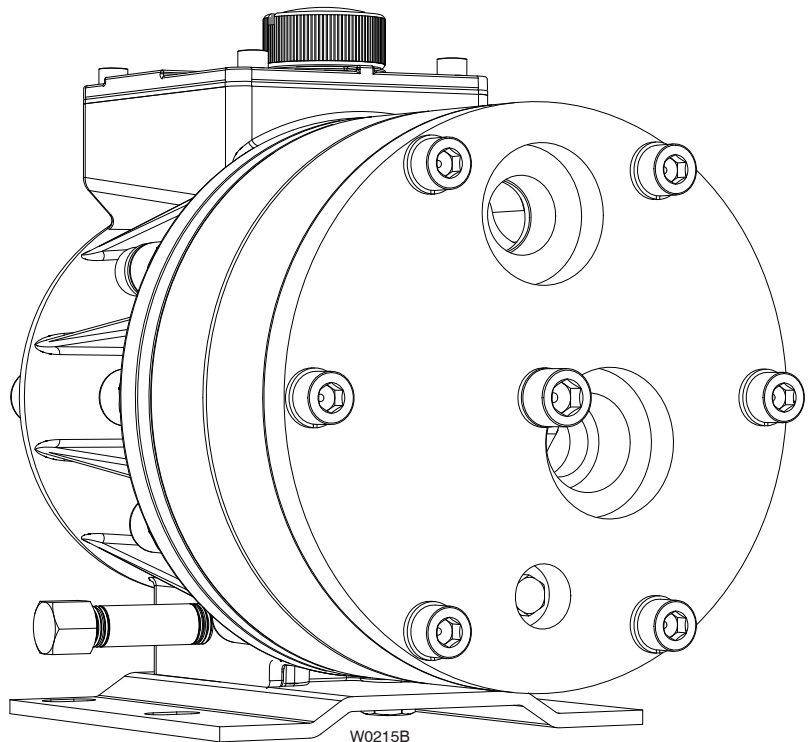
Record your pump model number and serial number here for easy reference:

Model No. \_\_\_\_\_

Serial No. \_\_\_\_\_

Date of Purchase \_\_\_\_\_

When ordering parts or making inquiries about this pump, please mention the model and serial numbers.

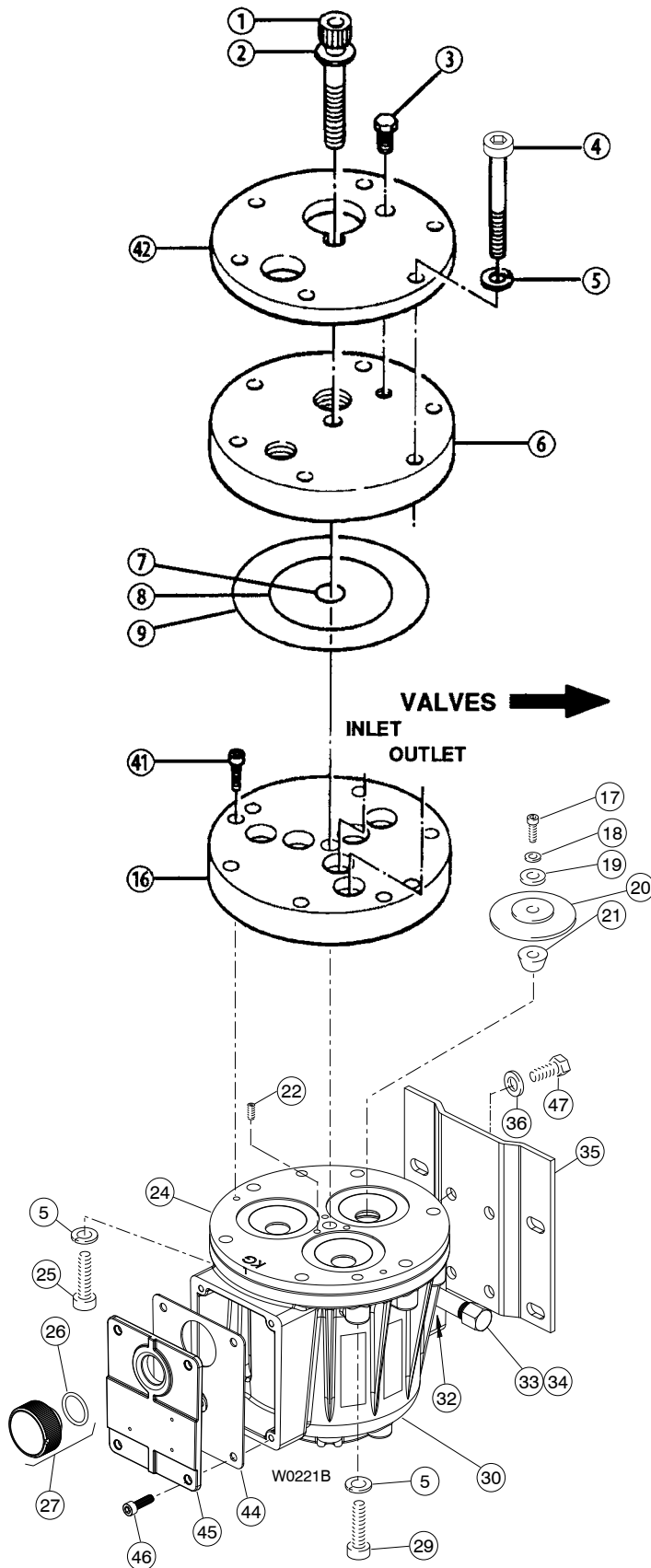


**WANNER ENGINEERING, INC.**

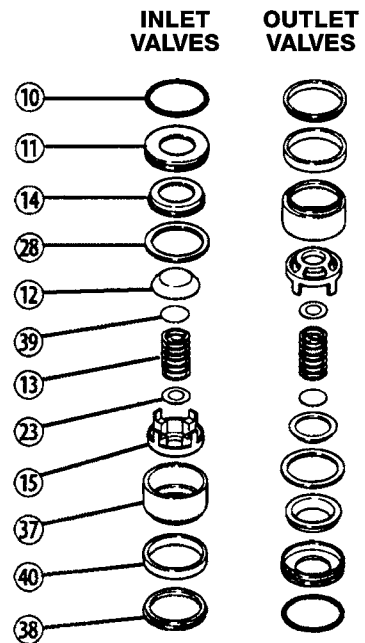
1204 Chestnut Avenue, Minneapolis, MN 55403  
TEL: (612) 332-5681 FAX: (612) 332-6937  
TOLL-FREE FAX [US only]: (800) 332-6812

[www.hydra-cell.com](http://www.hydra-cell.com)  
email: [sales@wannereng.com](mailto:sales@wannereng.com)

# G-10-SD Fluid End



Bolt Torque Specifications	
Ref. No.	Assembly Torque
1	45 ft-lbs
4	45 ft-lbs
17	18-20 in.-lbs
25	20 ft-lbs
29	20 ft-lbs



# G-10-SD Fluid End

Ref. No.	Part Number	Description	Quantity/ Pump
1	G10-081-2017	Screw, Cap, soc-hd, 102 mm.....	1
2	G10-084-2010	Washer, Flat <sup>1</sup> .....	1
	G10-084-1010	Washer, Flat <sup>2</sup> .....	1
3	G10-038-2211	Plug, 316 SST.....	1
4	G10-024-2010	Screw, Cap, soc-hd, 130 mm <sup>1</sup> .....	6
	G25-024-2010	Screw, Cap, soc-hd, 120 mm <sup>2</sup> .....	6
5	D10-048-2010	Washer, Split lock <sup>1</sup> .....	8
	G25-048-2010	Washer, Split lock <sup>2</sup> .....	8
6	G10-004-1051	Manifold, Celcon, BSPT port.....	1
7	D10-083-2110	O-ring, Center bolt, Buna.....	1
	D10-083-2111	O-ring, Center bolt, Viton.....	1
	D10-083-2112	O-ring, Center bolt, Neoprene.....	1
	D10-083-2113	O-ring, Center bolt, EPDM.....	1
8	D10-073-2110	O-ring, Inner manifold, Buna.....	1
	D10-073-2111	O-ring, Inner manifold, Viton.....	1
	D10-073-2112	O-ring, Inner manifold, Neoprene.....	1
	D10-073-2113	O-ring, Inner manifold, EPDM.....	1
9	D10-109-2110	O-ring, Outer manifold, Buna.....	1
	D10-109-2111	O-ring, Outer manifold, Viton.....	1
	D10-109-2112	O-ring, Outer manifold, Neoprene.....	1
	D10-109-2113	O-ring, Outer manifold, EPDM.....	1
10	D10-035-2160	O-ring, Valve seat, Buna.....	6
	D10-035-2161	O-ring, Valve seat, Viton.....	6
	D10-035-2162	O-ring, Valve seat, Neoprene.....	6
	D10-035-2163	O-ring, Valve seat, EPDM.....	6
11	D10-020-1020	Holder, Seat, valve, 17-4 sst, HT.....	6
12	D10-021-3300	Valve, Ceramic.....	6
13	D10-022-3125	Spring, Valve, Elgiloy (slurry).....	6
14	D10-135-2310	Seat, Valve, polyurethane.....	6
15	D10-023-2330	Retainer, Valve spring, Celcon (slurry) ...	6
16	D10-003-1051	Valve plate, Celcon.....	1
17	D10-030-2010	Screw, Flat-hd, SST, 3/8 in. ....	3
18	D10-047-2110	O-ring, Follower, Buna-N.....	3
	D10-047-2111	O-ring, Follower, Viton.....	3
	D10-047-2112	O-ring, Follower, Neoprene.....	3
	D10-047-2113	O-ring, Follower, EPDM.....	3

Ref. No.	Part Number	Description	Quantity/ Pump
19	D10-017-1010	Follower, 316 SST.....	3
20	D10-018-2312	Diaphragm, Neoprene.....	3
	D10-018-2313	Diaphragm, EPDM.....	3
	D10-018-2315	Diaphragm, Viton (XT).....	3
	D10-018-2320	Diaphragm, Buna-N-XS.....	3
21	D10-016-1010	Plunger.....	3
22	G10-082-2010	Set Screw, 10 mm.....	3
23	D10-141-2310	Washer, Polyurethane.....	6
24	K10-002-1010	Cylinder Housing <sup>1</sup> .....	1
	K10-002-1020	Cylinder Housing, Metric <sup>2</sup> .....	
	K10-002-1210	Cylinder Housing Assembly and all "Loaded" <sup>1,3</sup> .....	
	K10-002-1220	Cylinder Housing Assembly, Metric and all "Loaded" <sup>2,3</sup> .....	
	K10-002-1232	Loaded Cylinder Housing, UNC, Neoprene <sup>1</sup> .....	
	K10-002-1233	Loaded Cylinder Housing, UNC, EPDM <sup>1</sup> .....	
	K10-002-1234	Loaded Cylinder Housing, UNC, Buna N-XS <sup>1</sup> .....	
	K10-002-1235	Loaded Cylinder Housing, UNC, Viton XT <sup>1</sup> .....	
	K10-002-1236	Loaded Cylinder Housing, UNC, PTFE.....	
	K10-002-1242	Loaded Cylinder Housing, Metric, Neoprene <sup>2</sup> .....	
	K10-002-1243	Loaded Cylinder Housing, Metric, EPDM <sup>2</sup> .....	
	K10-002-1244	Loaded Cylinder Housing, Metric, Buna N-XS <sup>2</sup> .....	
	K10-002-1245	Loaded Cylinder Housing, Metric, Viton XT <sup>2</sup> .....	
	K10-002-1246	Loaded Cylinder Housing, Metric, PTFE.....	
25	G10-029-2010	Screw, Cap, hex-hd, 25 mm <sup>1</sup> .....	4
	G10-089-2011	Screw, Cap, hex-hd, 38 mm <sup>2</sup> .....	4
26	D10-080-2110	O-ring, Oil fill, Buna.....	1
27	D03-039-1030	Cap with O-ring, Oil fill.....	1
28	D10-138-1010	Spacer, 17-7 SST, HT.....	6

<sup>1</sup> Used on G10-SD models prior to S/N 216283.

<sup>2</sup> Used on G10-SD models S/N 216283 and above.

<sup>3</sup> Cylinder Housing Assembly includes casting (24), bearing, adjusting plate (61), O-ring (60), and set screws (22).

<sup>4</sup> Pump housing (metric) includes housing (30), cover (45), gasket (44), and screws (46). Requires new screws (4), washers (5), screws (25), and screw (29).

<sup>5</sup> Pump Housing Assembly includes housing (30), oil drain/plugs (32, 33, 34), cover (45), gasket (44), and screws (46). Requires new screws (4), washers (5), screws (25), and screw (29).

# G-10-SD Fluid End

Ref. No.	Part Number	Description	Quantity/ Pump
29	G10-087-2010	Screw, Cap, hex-hd, 30 mm <sup>1</sup> .....	1
	G10-087-2011	Screw, Cap, hex-hd, 45 mm <sup>2</sup> .....	1
30	G10-001-1050	Pump Housing, Metric <sup>4</sup> .....	1
	G10-001-1215	Pump Housing Assembly, Metric <sup>5</sup> .....	—
31	G10-028-2010	Nut, Hex .....	6
32	D10-076-2210	Elbow, Brass, 1/8 in. <sup>1</sup> .....	1
	D10-076-2250	Plug, soc-hd, 1/4 in. <sup>2</sup> .....	2
33	D10-077-2210	Nipple, Brass, 3/8 in. <sup>1</sup> .....	1
	D10-077-2250	Nipple, Brass, 1/4 in. <sup>2</sup> .....	1
34	D10-078-2210	Cap, Brass, 1/8 in. <sup>1</sup> .....	1
	D10-078-2250	Cap, Brass, 1/4 in. <sup>2</sup> .....	1
35	D10-025-1010	Base .....	1
36	D10-054-2010	Washer, Shakeproof.....	4
37	D10-136-1010	Shell, 17-4 SST, HT.....	6
38	D10-137-1010	Spacer, 17-7 SST, HT.....	6
39	D10-140-2310	Washer, Polyurethane.....	6
40	D10-139-1010	Seal, Crush, UHMW polyethylene .....	6
41	D10-088-2010	Screw, Cap, soc-hd, 30 mm <sup>1</sup> .....	2
	G10-088-2010	Screw, Cap, soc-hd, 30 mm <sup>2</sup> .....	2
42	D10-100-1010	Support, Faceplate.....	1
44	G10-106-2350	Gasket, Cover <sup>2</sup> .....	1
45	G10-105-1050	Cover/Nameplate <sup>2</sup> .....	1
46	G03-088-2010	Screw, 20 mm <sup>2</sup> .....	4
47	G10-029-2010	Screw, Cap, hex-hd, 25 mm.....	4

<sup>1</sup> Used on G10-SD models prior to S/N 216283.

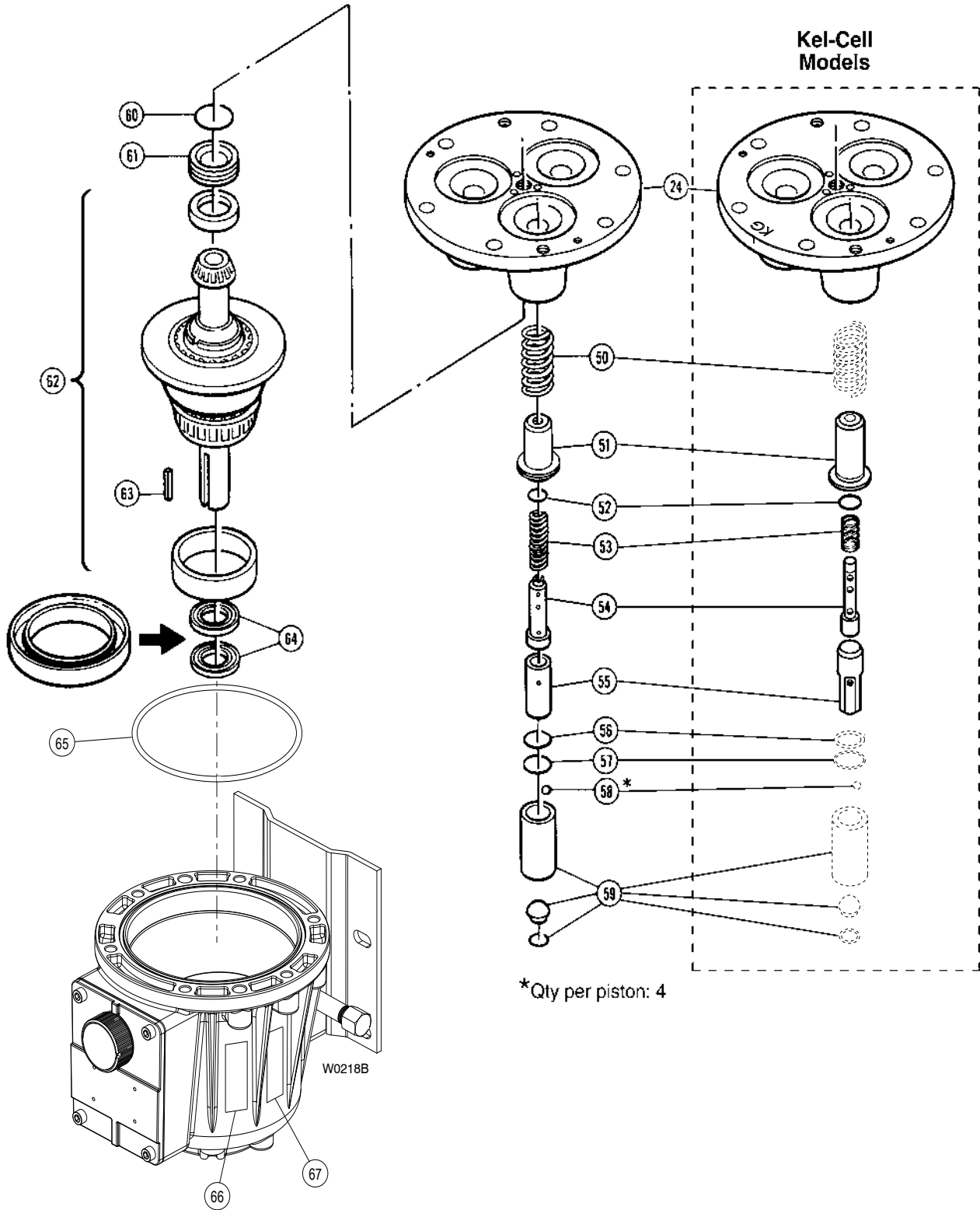
<sup>2</sup> Used on G10-SD models S/N 216283 and above.

<sup>3</sup> Cylinder Housing Assembly includes casting (24), bearing, adjusting plate (61), O-ring (60), and set screws (22).

<sup>4</sup> Pump housing (metric) includes housing (30), cover (45), gasket (44), and screws (46). Requires new screws (4), washers (5), screws (25), and screw (29).

<sup>5</sup> Pump Housing Assembly includes housing (30), oil drain/plugs (32, 33, 34), cover (45), gasket (44), and screws (46). Requires new screws (4), washers (5), screws (25), and screw (29).

# G-10-SD Hydraulic End



# G-10-SD Hydraulic End

Ref. No.	Part Number	Description	Quantity/ Pump
50	D10-019-3110	Spring, Piston return .....	3
51	D10-042-1010	Retainer, Spring .....	3
	K10-042-1010	Retainer, Spring, Kel-Cell <sup>5</sup> .....	3
52	D10-046-2110	O-ring, Valve cylinder, Buna .....	3
	C23-009-2110	O-ring, Valve cylinder, Buna, Kel-Cell <sup>5</sup> .....	3
53	D10-045-3110	Spring, Sleeve valve .....	3
	D10-045-3111	Spring, Sleeve valve, PTFE diaphragm .....	3
	K10-045-3110	Spring, Sleeve valve, Kel-Cell <sup>5</sup> .....	3
54	D10-044-1010	Valve Plunger .....	3
	K10-044-1010	Valve Plunger, Kel-Cell <sup>5</sup> .....	3
55	D10-043-1010	Cylinder, Valve .....	3
	K10-043-1010	Cylinder, Valve, Kel-Cell <sup>5</sup> .....	3
56	D10-034-2110	O-ring, Buna.....	3
57	D10-041-1010	Washer, Ball retainer.....	3
58	D10-015-3010	Ball .....	12
59	D10-014-1209	Piston with foot and retainer .....	3
	D10-014-1210	Piston Assembly, Buna <sup>6</sup> .....	—
	K10-014-1210	Piston Assembly, Buna, Kel-Cell <sup>5,6</sup> ...	—
60	D10-075-2110	O-ring, Bearing adjusting plate, Buna	1
61	D10-012-1010	Bearing Adjusting Plate.....	1

Ref. No.	Part Number	Description	Quantity/ Pump
62	D10-007-1210	(X) Cam Assembly, 29.0 lpm @ 1450 rpm <sup>7</sup> .....	—
	D10-007-1211	(I) Cam Assembly, 12.5 lpm @ 1450 rpm <sup>7</sup> .....	—
	D10-007-1212	(S) Cam Assembly, 18.9 lpm @ 1450 rpm <sup>7</sup> .....	—
	D10-007-1214	(E) Cam Assembly, 25.2 lpm @ 1450 rpm <sup>7</sup> .....	—
63	D10-085-2210	Key, Shaft.....	1
64	D10-031-2110	Seal, Buna.....	2
65	D10-037-2110	O-ring, Pump housing, Buna .....	1
66	D10-111-2401	Label, Caution, freezing.....	1
67	D10-111-2402	Label, Caution, check oil.....	1

<sup>5</sup> Parts used in Kel-Cell version pumps (Kel-Cell version pumps are indicated by a “K” in the 5th digit of the pump model number).

<sup>6</sup> Piston Assembly includes cylinder, foot, valve plunger, O-rings, spring retainer, and springs (50-59).

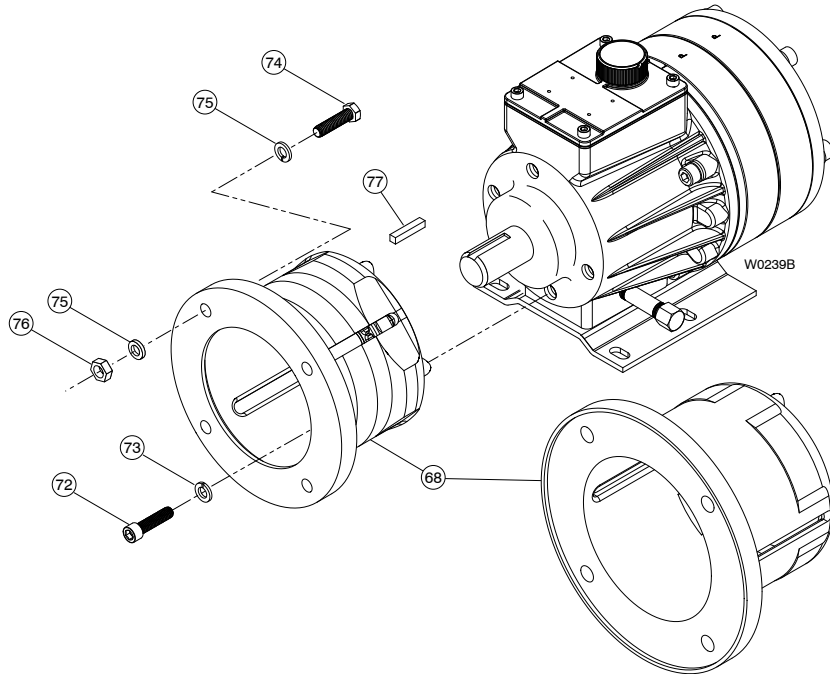
<sup>7</sup> Cam Assembly includes cam, shaft, wobble plate, and bearings. It is only available as an assembly.

# G-10-SD Adapter Kit

## G-10 Pump/Motor Adapter Kit

For IEC 80-90 B5 Flange Motors (Complete Kit Part No. A04-003-1200)

For IEC 100-112 B5 Flange Motors (Complete Kit Part No. A04-004-1200)



Ref No. Description	A04-003-1200 <sup>1</sup>	A04-004-1200 <sup>1</sup>	Qty/Kit
	A04-001-1200 <sup>2</sup>	A04-002-1200 <sup>2</sup>	
68 Pump/Motor Adapter	A04-031-1001 <sup>1</sup> A04-032-1050 <sup>2</sup>	A04-030-1001 <sup>1</sup> A04-033-1050 <sup>2</sup>	1 1
69* Adapter Baseplate	A04-025-1010 <sup>1</sup>	—	1
70* Screw, Cap, Hex-hd	D10-029-2010 <sup>1</sup>	—	4
71* Lockwasher, Internal tooth	D10-054-2010 <sup>1</sup>	—	4
72 Screw, Cap, Soc-hd	A04-041-2010 <sup>1</sup> G35-029-2010 <sup>2</sup>	A04-041-2010 <sup>1</sup> G35-029-2010 <sup>2</sup>	4 4
73 Lockwasher, Split	D10-048-2010 <sup>1</sup> G25-048-2010 <sup>2</sup>	D10-048-2010 <sup>1</sup> G25-048-2010 <sup>2</sup>	4 4
74 Screw, Cap, Hex-hd,	A04-046-2010 M10	A04-043-2010 M12	4
75 Lockwasher, Split	A04-044-2010 M10	M10-111-2000 1/2 in.	8
76 Nut, Hex	A04-047-2010 M10	A04-045-2010 M12	4
77 Key, Short	A04-085-2210	A04-085-2210	1

<sup>1</sup> Used on G10 models prior to S/N 216283.

<sup>2</sup> Used on G10 models S/N 216283 and above.

\* Not shown.

# G-10-SD Series Replacement Parts Kits

TO ORDER REPLACEMENT PARTS KIT: A Replacement Parts Kit contains 11 digits corresponding to customer-specified design options.

1	2	3	4	5	6	7	8	9	10	11
---	---	---	---	---	---	---	---	---	----	----

Digit	Order Code	Description
1-3	<b>G10</b>	<b>Pump Configuration</b> For all G-10-SD Pumps
4		<b>Kit Designator</b>
	<b>K</b>	Complete Fluid End Kit
	<b>D</b>	Diaphragm Kit
	<b>V</b>	Valve Kit (diaphragm not included)
	<b>W</b>	Spring & Seal Kit (diaphragm not included)
5-6	<b>56</b>	<b>Pump Head Version</b> SD Pump Head Version
7		<b>Diaphragm &amp; O-ring Material</b>
	<b>E</b>	EPDM
	<b>G</b>	Viton®-XT
	<b>P</b>	Neoprene
	<b>T</b>	Buna-N-XS
8		<b>Valve Seat Material</b>
	<b>R</b>	Urethane & Stainless Steel
	<b>X</b>	Not included in Diaphragm Kit
9		<b>Valve Material</b>
	<b>C</b>	Ceramic
	<b>X</b>	Not included in Diaphragm Kit or Spring & Seal Kit
10		<b>Valve Springs</b>
	<b>E</b>	Elgiloy®
	<b>X</b>	Not included in Diaphragm Kit
11		<b>Valve Spring Retainers</b>
	<b>C</b>	Celcon
	<b>X</b>	Not included in Diaphragm Kit

## Kit Contents

Part Number*	Description	Qty	Kit Designator			
			K	D	V	W
D10-018-___	Diaphragm	3	•	•		
D10-047-___	O-ring, follower	3	•	•		
D10-109-___	O-ring, outer manifold	1	•	•	•	•
D10-073-___	O-ring, inner manifold	1	•	•	•	•
D10-083-___	O-ring, center manifold	1	•	•	•	•
D10-135-2310	Valve seat, polyurethane	6	•		•	•
D10-035-___	O-ring, valve seat	6	•		•	•
D10-020-1020	Holder, valve seat	6	•		•	
D10-021-3300	Valve, ceramic	6	•		•	
D10-022-3125	Valve spring, Elgiloy (slurry)	6	•		•	•
D10-137-1010	Spacer	6	•		•	
D10-023-2330	Retainer, valve spring (slurry)	6	•		•	•
D10-140-2310	Washer, polyurethane	6	•		•	•
D10-141-2310	Washer, polyurethane	6	•		•	•
D10-136-1010	Shell	6	•		•	
D10-137-1010	Spacer	6	•		•	
D10-138-1010	Spacer	6	•		•	
D10-139-1010	Crush seal	6	•		•	•
A01-113-3400	Threadlocker	1	•	•		

\* Last four digits of part numbers with -\_\_\_ refer to specific material of construction.



## WANNER ENGINEERING, INC.

1204 Chestnut Avenue, Minneapolis, MN 55403  
 TEL: (612) 332-5681 FAX: (612) 332-6937  
 TOLL-FREE FAX [US only]: (800) 332-6812

www.hydra-cell.com  
 email: sales@wannereng.com