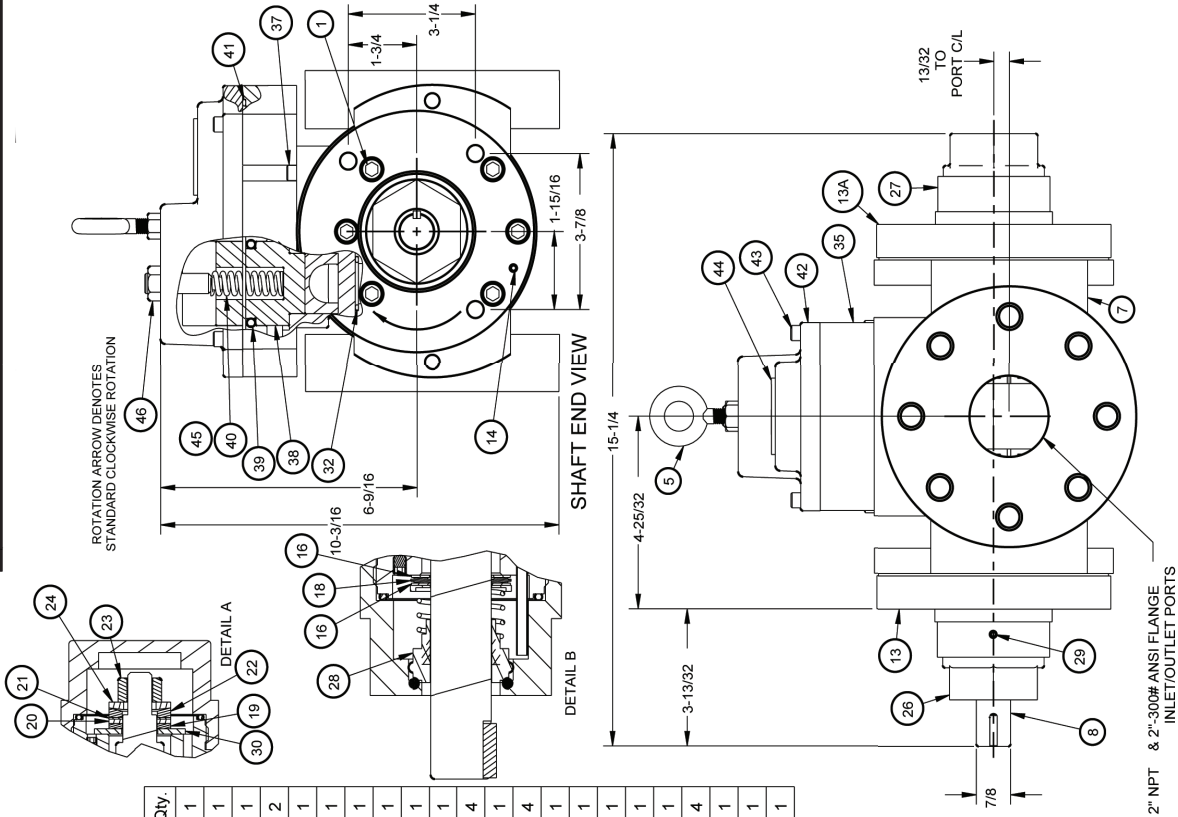


DOUBLE PUMP WITH RELIEF VALVE-70 GPM

| Item | Part No.  | Description              | Qty. |
|------|-----------|--------------------------|------|
| 1    | H90SC.8   | Screw, Cover             | 12   |
| 2    | F18C75    | Drive Key 3/16 SqX3/4 Lg | 1    |
| 3    | E49E      | Set Screw, Vent          | 2    |
| 4    | H11F      | Bearing                  | 3    |
| 5    | EYB1      | Eye Bolt                 | 1    |
| 6    | H28E      | O-Ring, Cover            | 2    |
| 7    | D403A4    | Case                     | 1    |
| 8    | RSK004    | Shaft & Pinion Assembly  | 1    |
| 9    | D4015C1   | Pinion                   | 1    |
| 9A   | D3015C9   | Pinion, Keyed            | 1    |
| 10   | D4014MC6  | Shaft                    | 1    |
| 11   | F18C100   | Key, 3/16 Sq X 1.00 Lg   | 1    |
| 12   | D4026F1   | Rotor                    | 1    |
| 12A  | D3026F1   | Rotor                    | 1    |
| 13   | D3030A8   | Cover                    | 1    |
| 13A  | D4030A8   | Cover                    | 1    |
| 14   | F41C      | Pin                      | 2    |
| 16   | H25C2     | Washer                   | 2    |
| 18   | H11TB2    | Thrust Bearing           | 1    |
| 19   | F25C2     | Washer                   | 1    |
| 20   | F11TB2    | Thrust Bearing           | 1    |
| 21   | F25C3     | Washer                   | 1    |
| 22   | F25C5     | Spherical Washer         | 1    |
| 23   | ZA532A    | Nut                      | 1    |
| 24   | F25C4     | Spherical Washer         | 1    |
| 25   | SE2137N70 | O-Ring, Gland            | 2    |
| 26   | H22SS2A   | Gland                    | 1    |
| 27   | F22SM2A   | Gland                    | 1    |
| 28   | H18AM     | Shaft Seal               | 1    |
| 29   | E49D      | Set Screw, Gland         | 1    |
| 30   | F25C7     | Washer                   | 1    |
| 31   | F43C1     | Roll Pin                 | 1    |
| 32   | SE2122N90 | O-Ring, Valve            | 4    |
| 35   | RVB03     | Valve Body               | 1    |
| 37   | E90SC2.0  | Valve                    | 4    |
| 38   | RVP04     | Valve Piston             | 1    |
| 39   | SE2327N70 | O-Ring, Valve Piston     | 1    |
| 40   | H52E      | Spring                   | 1    |
| 41   | SE2160N70 | O-Ring, Valve Cover      | 1    |
| 42   | RVC30     | Valve Cover              | 1    |
| 43   | E90SC1.0  | Screw, Valve Cover       | 4    |
| 44   | H65C      | Pipe Plug                | 1    |
| 45   | F55C      | Adjustment Screw         | 1    |
| 46   | E64C      | Lock Nut                 | 1    |



CUTAWAY VIEW BOTTOM

RIGHT SIDE VIEW

2" NPT & 2"-300# ANSI FLANGE  
INLET/OUTLET PORTS