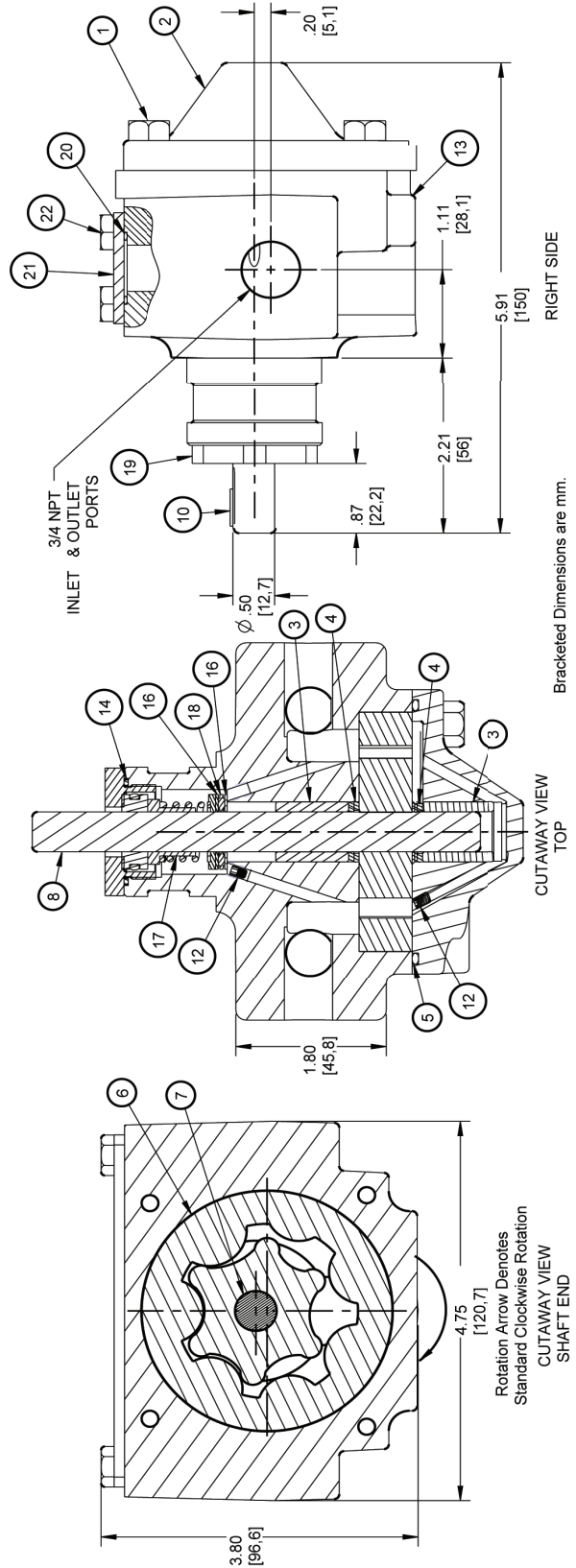


**6U - 6 GPM HAIGHT PUMP**

| Item | Part Number | Description                  | Qty. |
|------|-------------|------------------------------|------|
| 1    | E90HC.6     | Screw, Cover                 | 4    |
| 2    | EG830A      | Cover                        | 1    |
| 3    | E11F        | Bearing                      | 2    |
| 4    | E21E        | Wiper Seal                   | 2    |
| 5    | SE2151N70   | O-ring-Cover                 | 1    |
| 6    | HJ169A      | Gerotor Set                  | 1    |
| 7    | DUGC13PK    | Gerotor Set & Shaft Assembly | 1    |
| 8    | D814PK      | Shaft                        | 1    |
| 10   | E13C50      | Key, 1/8 Sq X 1/2 Lg         | 1    |
| 12   | E49G        | Set Screw, Vent              | 2    |
| 13   | EG66A7      | Case                         | 1    |
| 14   | E24SE       | O-ring-Gland                 | 1    |
| 16   | E25C3       | Washer                       | 2    |
| 17   | E18AM       | Shaft Seal                   | 1    |
| 18   | E11TB2      | Thrust Bearing               | 1    |
| 19   | E22S3F4     | Gland                        | 1    |
| 20   | SE2018N90   | O-Ring, Cover Plate          | 2    |
| 21   | ED530CP     | Cover Plate                  | 1    |
| 22   | E90HC.5     | Screw, Cover Plate           | 4    |



**6U - 6 GPM  
Universal Pump**