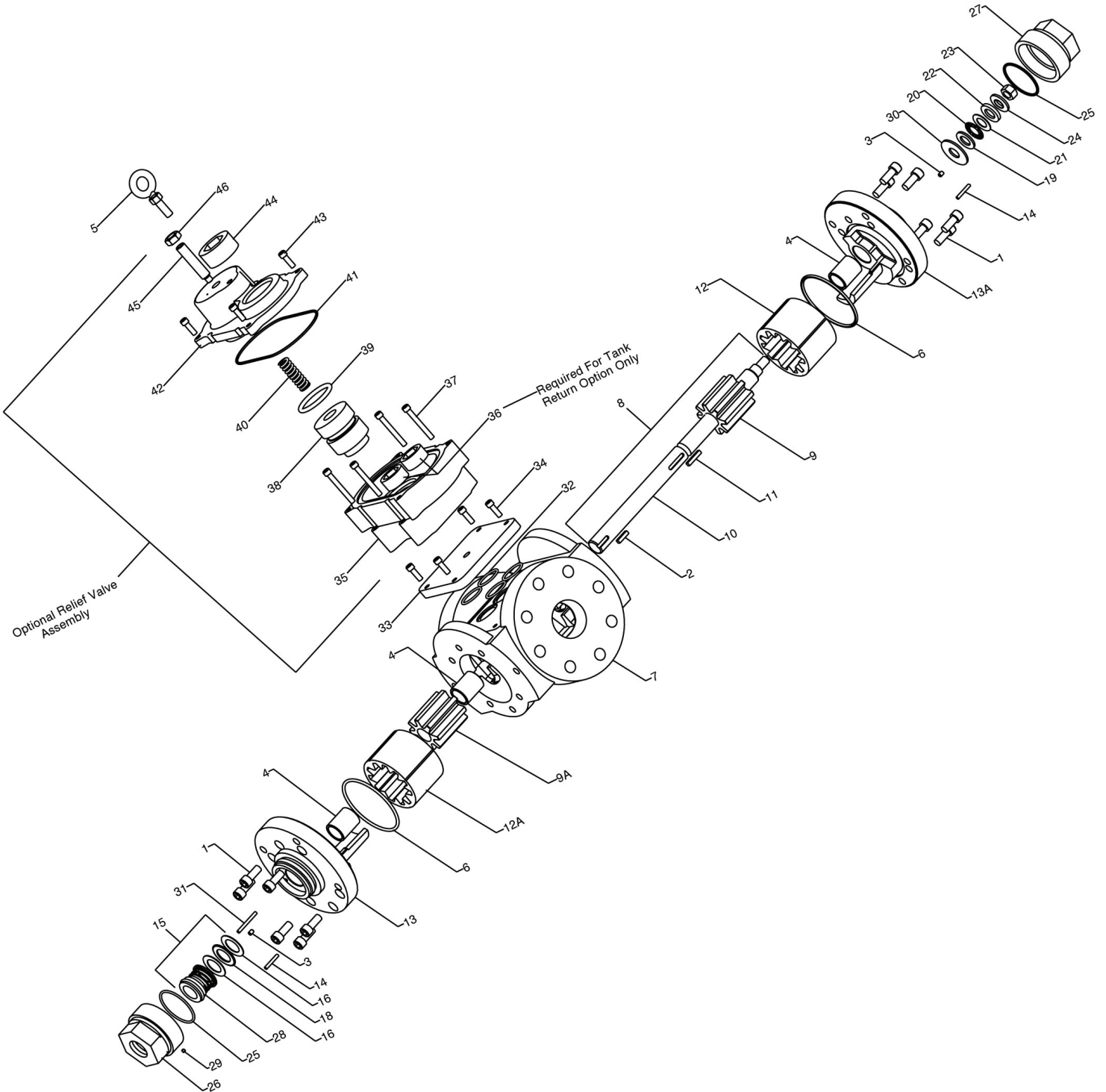


**HAIGHT® 44 through 80 GPM Double Pump**



## 44 - 80 GPM DOUBLE PUMP REPLACEMENT PARTS

Item#	Description	Part No	Qty	Item#	Description	Part No	Qty
1	Screw .375 x .875 UNC HSCS	H90SC.8	12	25	O-ring-Gland		2
2	Drive Key .188 x .75	F18C75	1		Buna	SE2137N70	
3	Set Screw 10-32x1/4 SH CP	E49E	2		Viton®	SE2137V76	
4	Shaft Bearing .877 x 1.5 x 1.128		3		Neoprene	SE2137C70	
	Iron	H11F			Kalrez®	SE2137K75	
	Bronze	H11B			Silicone	SE2137S70	
	Carbon Graphite	H11G			Teflon	SE2137J60	
5	Eyebolt	EYB1	1	26	Gland Cap-Shaft	H22SS2A	1
6	O-ring		2	27	Gland Cap	F22SM2A	1
	Neoprene	H28N		28	Mechanical Shaft Seal		
	Buna N	H28E		29	Set Screw 10-32x1/4 SH CP	E49D	1
	Viton®	H28V		30	Washer .656x1.66x.094	F25C7	1
	Kalrez®	H28K		31	Roll Pin	F43C1	1
	Teflon	H28T		32	O-ring		4
	Silicone	H28Z			Buna	SE2122N90	
7	Casing	D403A4	1		Viton®	SE2122V90	
8	Shaft & Pinion Assembly		1		Neoprene	SE2122C90	
	44 GPM	RSK001			Kalrez®	SE2122K75	
	54 GPM	RSK002			Teflon	SE2122J60	
	60 GPM	RSK003			Silicone	SE2122S90	
	70 GPM	RSK004		33	Cover Plate	D8030CP	1
	80 GPM	RSK005		34	Screw, Cover Plate	E90SC.9	4
9	Standard Pinion	(Not sold separately. See Item #8)		35	Valve Body	RVB03	1
9A	Keyed Pinion	(Not sold separately. See Item #8)		36	Pipe Plug	F65C	2
10	Shaft	(Not sold separately. See Item #8)		37	Screw, Valve Body	E90SC2.0	4
11	Key, Pinion - .188x 1.0	F18C100	1	38	Valve Piston	RVP04	1
12	Rotor		1	39	O-ring, Valve Piston		1
	44 GPM	D2226F1			Buna	SE2327N70	
	54 GPM	D2226F1			Viton®	SE2327V76	
	60 GPM	D3026F1			Neoprene	SE2327C70	
	70 GPM	D4026F1			Silicone	SE2327S70	
	80 GPM	D4026F1			Kalrez®	SE2327K75	
12A	Mating Rotor		1	40	Spring		1
	44 GPM	D2226F1			40 - 80 PSI	H52E	
	54 GPM	D3026F1			80 - 130 PSI	H52F	
	60 GPM	D3026F1			130 - 220 PSI	H52G	
	70 GPM	D3026F1		41	O-ring, Valve Cover		1
	80 GPM	D4026F1			Buna	SE2160N70	
13	Drive Plate		1		Viton	SE2160V76	
	44 GPM	D2230A8			Neoprene	SE2160C70	
	54 GPM	D3030A8			Silicone	SE2160S70	
	60 GPM	D3030A8			Kalrez®	SE2160K75	
	70 GPM	D3030A8		42	Valve Cover	RVC30	1
	80 GPM	D4030A8		43	Screw, Valve Cover	E90SC1.0	4
13A	Cover		1	44	Pipe Plug	H65C	1
	44 GPM	D2230A8		45	Adjustment Screw	F55C	1
	54 GPM	D2230A8		46	Lock Nut	E64C	1
	60 GPM	D3030A8					
	70 GPM	D4030A8					
	80 GPM	D4030A8					
14	Roll Pin .156x1.13	F41C1	2				
15	Seal Kit						
16	Washer .625x1.12x.094	H25C2	2				
18	Thrust Bearing (Keyed end) (.875)	H11TB2	1				
19	Washer (1.12 x .63 x .09 hard steel)	F25C2	1				
20	Thrust Washer (.625)	F11TB2	1				
21	Washer (1.12 x .63 x .03 hard steel)	F25C3	1				
22	Washer	F25C5	1				
23	Locking Nut	ZA532A	1				
24	Washer	F25C4	1				



Viton® and Kalrez® are registered trademarks of DuPont Dow Elastomers