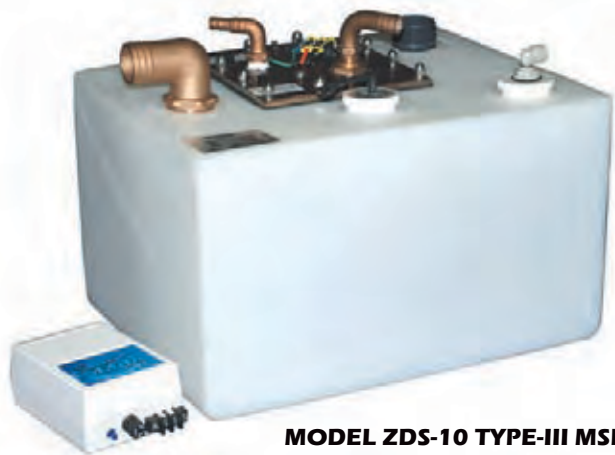


WASTE HOLDING SYSTEM: TYPE-III MSD

MODEL ZDS SERIES WITH SWEETTANK®



MODEL ZDS-10 TYPE-III MSD

IMPORTANT NOTE: It is illegal to discharge untreated waste directly overboard in most places. Consult local regulations before doing so. Discharge restrictions change with geographic location.

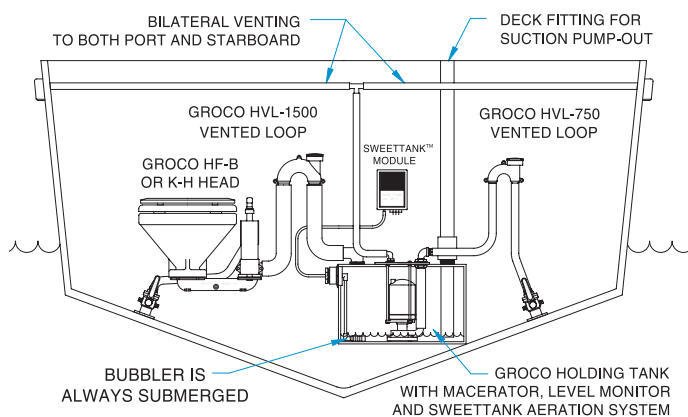
THE CONCEPT

A Type-III MSD may be used aboard any vessel regardless of size or geographic location. The system receives waste from one or more toilets and retains it for disposal at a dockside or marina pump-out facility, or the contents may be pumped directly overboard where legal to do so.

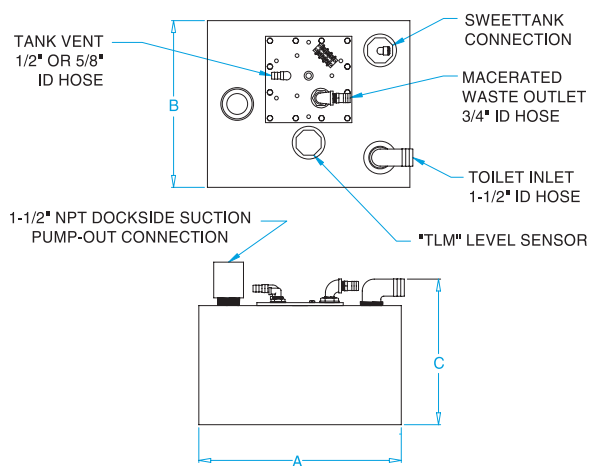
Available in many sizes and shapes, but stocked in four standard sizes, GROCO® Type-III MSD systems come complete with a TLM series level monitor and a powerful (17 GPM) macerator/discharge pump located inside the tank.

ZDS Models include SWEETTANK® which keeps the holding tank odor-free at all times, without the use of chemicals or filters. SWEETTANK® can be added to older ZDS models.

All tanks include an oversized vent to aid with high-capacity dockside pumpout.



SAMPLE INSTALLATION



DIMENSIONS

MODELS	BREAKER	DIMENSIONS (INCHES)			TOILET-IN	PLUMBING PUMP-OUT	VENT
		A	B	C			
ZDS-10 12V	15	17.0	14.0	13.7	1-1/2" ID hose	3/4" ID hose	1/2" or 5/8" ID hose
ZDS-10 24V	10	17.0	14.0	13.7	1-1/2" ID hose	3/4" ID hose	1/2" or 5/8" ID hose
ZDS-15 12V	15	24.0	14.0	13.7	1-1/2" ID hose	3/4" ID hose	1/2" or 5/8" ID hose
ZDS-15 24V	10	24.0	14.0	13.7	1-1/2" ID hose	3/4" ID hose	1/2" or 5/8" ID hose
ZDS-20 12V	15	28.3	14.5	15.0	1-1/2" ID hose	3/4" ID hose	1/2" or 5/8" ID hose
ZDS-20 24V	10	28.3	14.5	15.0	1-1/2" ID hose	3/4" ID hose	1/2" or 5/8" ID hose
ZDS-30 12V	15	28.0	23.0	15.0	1-1/2" ID hose	3/4" ID hose	1/2" or 5/8" ID hose
ZDS-30 24V	10	28.0	23.0	15.0	1-1/2" ID hose	3/4" ID hose	1/2" or 5/8" ID hose