

SS SERIES SEACOCK/STRAINER COMBINATION

INSTALLATION

- Thread the valve onto a properly sized bronze thru-hull fitting, and secure to the hull or butt block with 3/8" bronze or stainless steel bolts.
- Use quality marine-grade sealant or caulking compound between the valve flange and the butt block, and between the thru-hull fitting flange and the hull. Refer to ABYC section A-2 for details.

OPERATION

- The valve portion of the SS series seacock/strainer features GROCO's exclusive "expanding plug" design. To operate the valve, first loosen the wingnut on the back of the valve body. This allows the rubber plug to contract away from the inside of the valve body, and allows the valve handle to be turned one quarter turn to the desired position. Retighten the wingnut.

Note: During the time when the wingnut is loose, some slight valve leakage can be expected, and is normal. It will stop as soon as the wingnut is again retightened.

- The strainer portion of the SS series seacock/strainer is serviced by first closing the seacock. Unscrew the cover and remove the filter basket for cleaning. Replace and tighten the cover. Although hand-tight is sufficient for a good seal, it may be helpful to have a GROCO SW-2531 Spanner Wrench on hand for cover tightening and loosening. The three holes in the SS strainer cover are for the use of SW-2531.

WINTERIZATION

To properly winterize the SS, all water must be drained from the seacock, strainer, and connecting plumbing. First, shut off the seacock and remove the drain plugs (2) in the seacock body and beneath the strainer flange, unscrew the strainer cap allowing all water to drain. When draining is complete, replace and tighten both drain plugs.

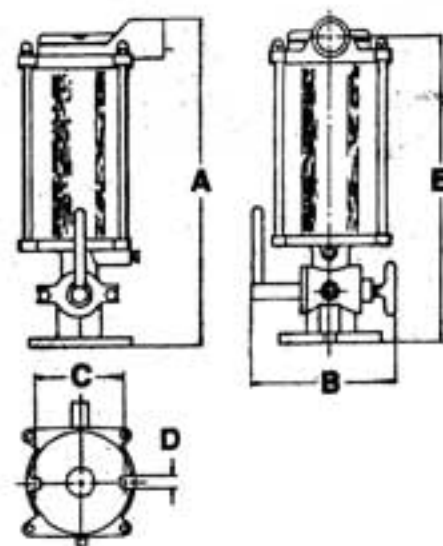
PARTS & ASSEMBLY

ITEM	PART NAME	QTY.	SS-500	SS-750	SS-1000	SS-1250
1	Screen	1	SS-504	SS-754	SS-1004	SS-1254
2	Cylinder, Clear	1	S-70	S-70-A	SVS-1006	SVS-1257
	Cylinder, Stainless Steel	1	AS-70	AS-70-A	ASVS-1006	ASVS-1257
3	Gasket	2	#9R	#9R	#8R	#8R
4	O-Ring	1	2-144	2-144	2-151	2-151
7	Tie Rod	4	S-66	S-73-C	SVS-1009	SVS-1259
9	Lockwasher	6	14ETB	14ETB	14ETB	14ETB
10	Wingnut	1	SV-752	SV-752	SV-752	SV-752
11	Valve Body	1	SS-500-B	SS-750-B	SS-1000-B	SS-1250-B
12	Disc	1	SV-753	SV-753	SV-103	SV-1252
12	Plug	1	SS-756	SS-756	SVS-104	SVS-1254
14	Handle & Cover	1	SV-756-A	SV-756-A	SV-1006-A	SV-1256-A
15	Valve Cover	1	SV-751	SV-751	SV-101	SV-1251
16	Bolt	2	1420X12HB	1420X12HB	1420X12HB	1420X12HB
17	Drain Plug	2	1827HB	1827HB	1827HB	1827HB
18	Strainer Top	1	SS-501	SS-751	SS-1001	SS-1251
19	Hex Nut	4	1420HB	1420HB	1420HB	1420HB
20	Cover	1	SS-502	SS-752	SS-1002	SS-1252
• Included in Repair Kit			SS-1		SS-2	

MAINTENANCE

If after several seasons of operation the valve becomes more difficult to operate, some lubrication may be in order. At haul-out remove the valve plug and inspect it for cuts or bumps. Bumps can be sanded or filed smooth. Apply a light coating of waterproof silicon-base grease and reinstall the plug. It is essential that the "disc" (item 12 in the exploded view drawing) be in place behind the plug when the unit is reassembled.

DIMENSIONS



MODEL	INLET PIPE SIZE	OUTLET PIPE SIZE	DIMENSIONS (INCHES)				
			A	B	C	D	E
SS-500	1/2"-14 NPS	1/2"-14 NPT	9.00	5.00	3.13	.38	8.25
SS-750	3/4"-14 NPS	3/4"-14 NPT	11.00	5.00	3.13	.38	10.25
SS-1000	1"-11-1/2 NPS	1"-11-1/2 NPT	11.75	5.50	3.00	.38	10.75
SS-1250	1-1/4"-11-1/2 NPS	1-1/4"-11-1/2 NPT	14.88	5.50	3.00	.38	13.75

