

PST Series: Pressure Storage Tanks

Installation, Operation, and Maintenance

Install PST-1 or PST-2 horizontally or vertically, and PST-3A, PST-4 and PST-5 vertically, anywhere in the cold water plumbing after the pump and before the water heater. Locate the PST and the system pressure gauge as far away from the pump as possible to reduce the affect of pump pulsations. If space limitations necessitate locating the PST adjacent to the pump, use several feet of coiled reinforced hose between the pump and the PST.

Use the mount hardware supplied to secure the PST to a suitably sturdy platform (remember the tank will be very heavy when filled with water), and leave sufficient room above the PST to allow for monthly checking and adjusting the PST air charge.

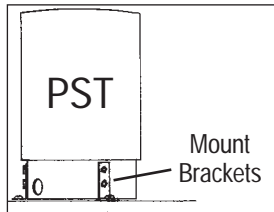
Before applying power to the pressure pump, the air charge in the PST must be checked and adjusted to match the pump cut-on pressure.

For GROCO PSR set the pressure to 28-30 PSIG; for GROCO PJR and WSC set the pressure to 18-20 PSIG. There is an air valve on the tank at the opposite end from the plumbing connection. Remove the protective cap to check and set air pressure with no water pressure present; use a standard tire gauge to check the pressure. Excess pressure can be released by depressing the center of the valve. Use a hand pump such a bicycle pump to add air if necessary.

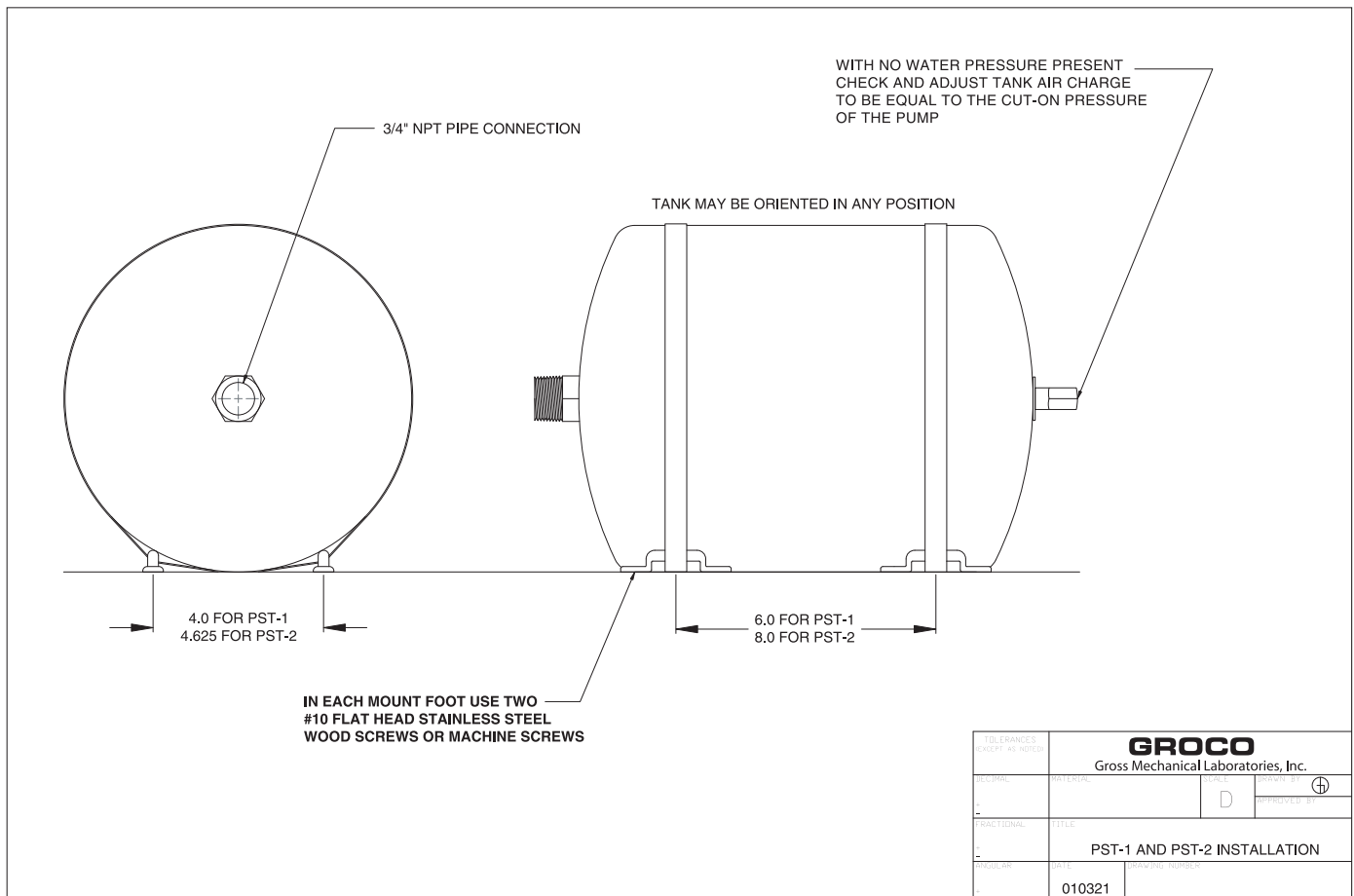
Check the PST air charge (with no water pressure present) at least monthly.



	PST-1	PST-2
Diameter	8.0	11.0
Length	12.63	14.0
Inlet Plumbing	3/4 MNPT	3/4 MNPT
Total Volume(gal)	2.0	4.4
Approx Drawdown (gal)	1.0	2.5
Max Working Pressure	100 PSI	100 PSI



	PST-3A	PST-4	PST-5
Diameter	15.38	15.38	15.38
Length	19.25	24	31.63
Inlet Plumbing	3/4" FNPT	3/4" FNPT	3/4" FNPT
Total Volume(gal)	10.3	14	20
Approx Drawdown (gal)	5.5	7	10
Max Working Pressure	100 PSI	100 PSI	100 PSI



TOLERANCES UNLESS NOTED		GROCO Gross Mechanical Laboratories, Inc.	
CALCULATED	DATE	D	APPROVED BY
FRACTIONAL	TITLE	PST-1 AND PST-2 INSTALLATION	
PROJECT NO.	DATE	010321	

© 1995 GROSS MECHANICAL LABORATORIES, INC. ALL RIGHTS RESERVED.