

P-9000 and P-9000-1 Rotary Pumps

Installation, Operation, and Maintenance

The Concept: P-9000 and P-9000-1 are twin chamber self-priming rotary pumps capable of exceptional combined pressure and flow.

Construction materials (stainless steel, bronze, Teflon and Delrin) make the suitable for pumping nearly any non-flammable and non-explosive fluid with low solids content.

P-9000 has Teflon impellers and is capable of developing pressure up to 60 PSI and flow up to 11 GPM.

P-9000 will run dry periodically without damage. Maximum RPM is 1750.

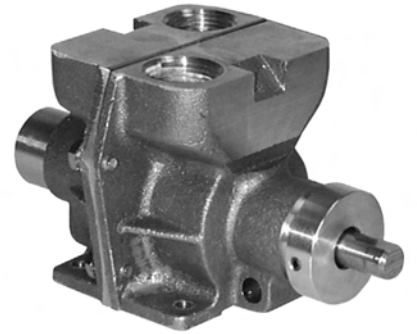
P-9000-1 has Delrin impellers and is capable of pressure up to 100 PSI and flow up to 8 GPM. P-9000-1 may not be run dry. Maximum RPM is 1750.

Installation: Mount securely with four (4) 1/4" bolts and lockwashers. In direct-drive installations (as with GROCO PSR pumps) alignment of the pump shaft with the motor shaft is critical for smooth and quiet operation. Carefully shim the pump to obtain accurate alignment. Improper alignment will result in noisy pump performance, low GPM and pressure, and high amp draw. Premature wear of the driving coupling and pump bearings and seal may result.

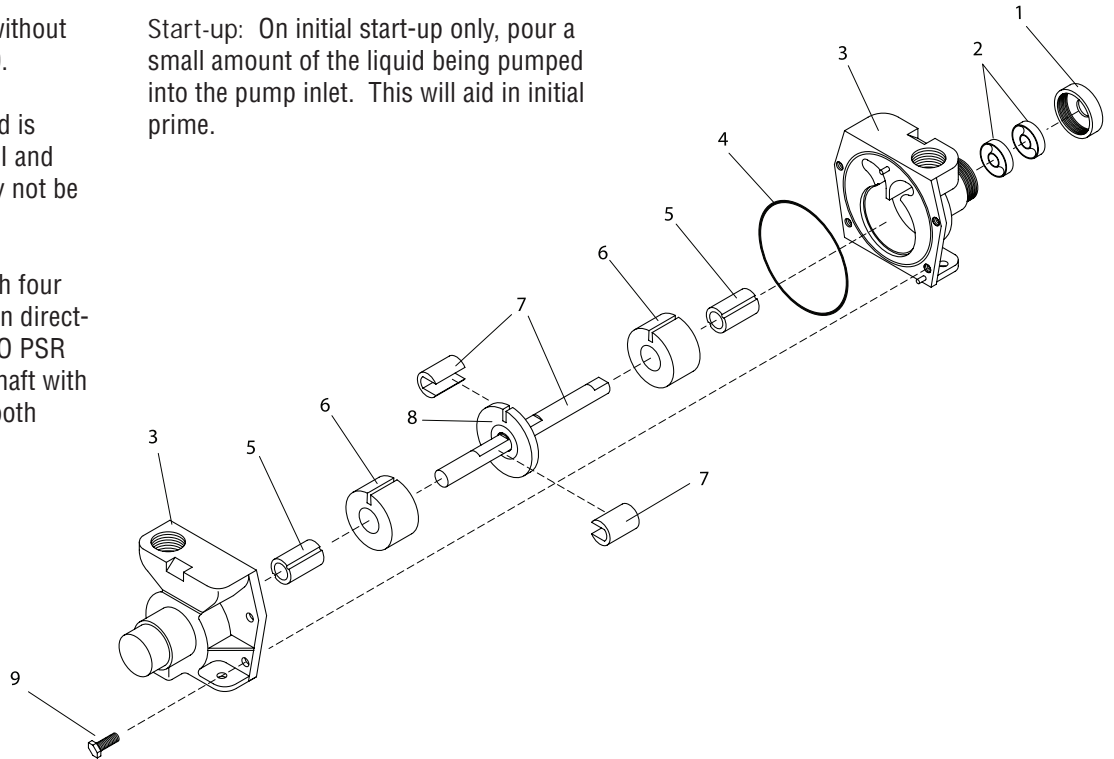
Plumbing: Inlet and outlet are threaded 3/4" NPT. The pump is reversible in rotation, so the inlet and outlet ports will be determined by motor rotation. If motor rotation is clockwise facing the motor shaft, the pump port closest to the motor will be the inlet.

Your choice of fittings will affect pump performance. Full-flow fittings provide the least restriction and therefore the greatest GPM flow. Use TFE thread tape on all threaded connections.

Start-up: On initial start-up only, pour a small amount of the liquid being pumped into the pump inlet. This will aid in initial prime.



Maintenance: Do not lubricate any part of the pump.



Item	Part Number	Part Name	Qty	Regular	Master
1	P-9020-C	End Cap, after 030801	1		
	P-9020	End Cap, before 030801	1		
2	P-9015	Seal**	2	*	*
3	P-9001/9002 Set	Pump Housings	1		
4	2-042	O-Ring, after 851201	1	*	*
	2-041	O-Ring, before 851201	1	*	*
5	P-9009 Set	Bearings	1		
6	P-9014 Set	Impellers	1		*
7	P-9003/4 Assy	Shaft & Eccentrics	1		
8	P-9006	Separator Assy	1		
9	1428X12HS	Screw	4		
NS	P-9005	Seal, before 850101	2	*	*
	P-9000 Regular				
	P-9000 Master				

**Pumps manufactured prior to 030701 require only 1 seal (keep addtl seal for spare)