

# HYDROMATIC™ SELF-CLEANING STRAINERS

U.S. PATENT NO. 5,830,366

## THE CONCEPT

As raw water strainers do their job, filter baskets become clogged with debris and flow to the connected device is reduced, resulting in the need for system shut-down for cleaning and maintenance. HYDROMATIC™ strainers eliminate untimely shut-downs and maintenance by



conducting a periodic self-cleaning cycle (the user selects the cleaning interval) with its powerful internal macerator. Debris is pumped overboard without shutting down the connected device.

## COMMON FEATURES

- A 30-second cleaning cycle is automatically performed at user-selected intervals.
- Optional interface with SSA system (see page 15) initiates cleaning cycle when flow is reduced, independent of the pre-set cleaning interval.
- The "Purge" option over-rides the selected cleaning interval and performs a one-time 30-second cleaning cycle.
- Powerful macerator grinds debris and discharges overboard below the waterline.
- "Ignition Protected" motors for DC models.
- AC models available in various HP and Phase options – 115VAC, 60Hz, 1-phase is standard.
- 970 and HSE models function as a sea chest to provide filtered water to multiple devices.
- Installation can be horizontal or vertical (flooded inlet required).
- HSE models are available with a bronze enclosure in place of clear sight glass. Specify AHSEF-(pipe size)-(voltage).



### 911-1000

Provides filtered water to a single device and has 1" NPT ports for Water In, Water Out and Debris Out.



### 970-1500

Provides filtered water to multiple devices, and has a 1-1/2" NPT inlet port with multiple 1/2", 3/4" and 1" ports for connecting devices. Debris is pumped out through a 3/4" NPT port.



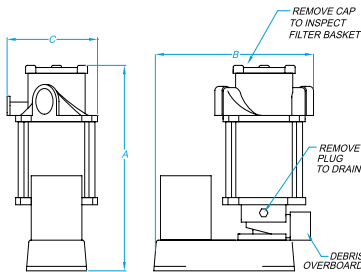
### 970-2020

Provides filtered water to a single 1-1/2" or 2" device. Debris is pumped out through a 3/4" NPT port.

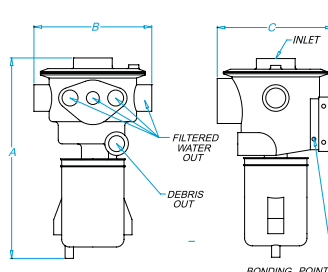


### HSE

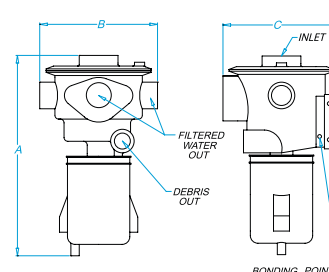
Provides filtered water to 4", 5" or 6" device, or may be used as a sea chest to provide filtered water to multiple smaller devices. Debris is pumped out through a 1" NPT port.



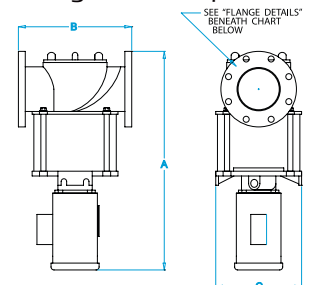
911 DIMENSIONS



970-1500 DIMENSIONS



970-2020 DIMENSIONS

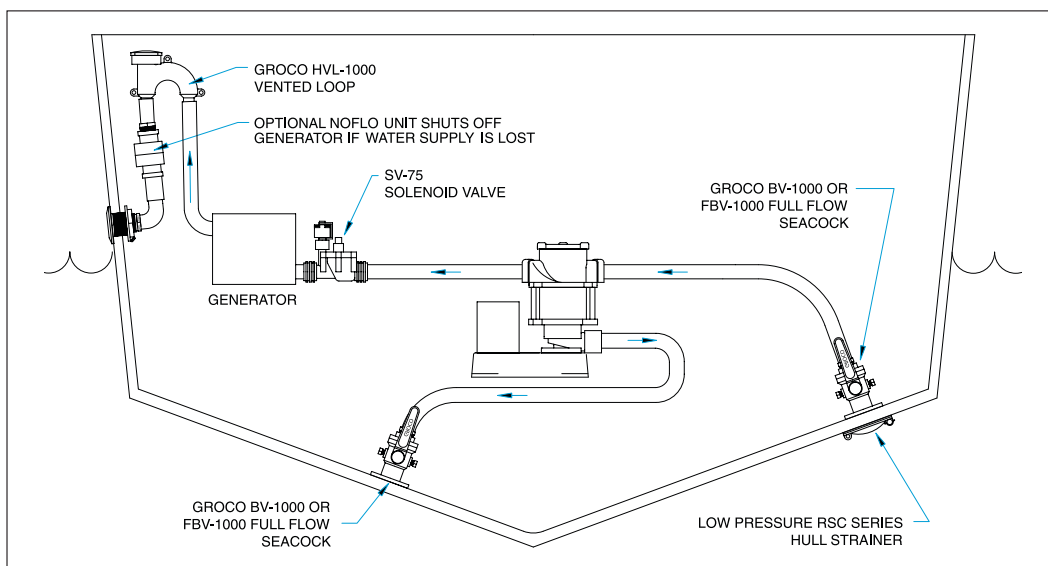


HSE DIMENSIONS

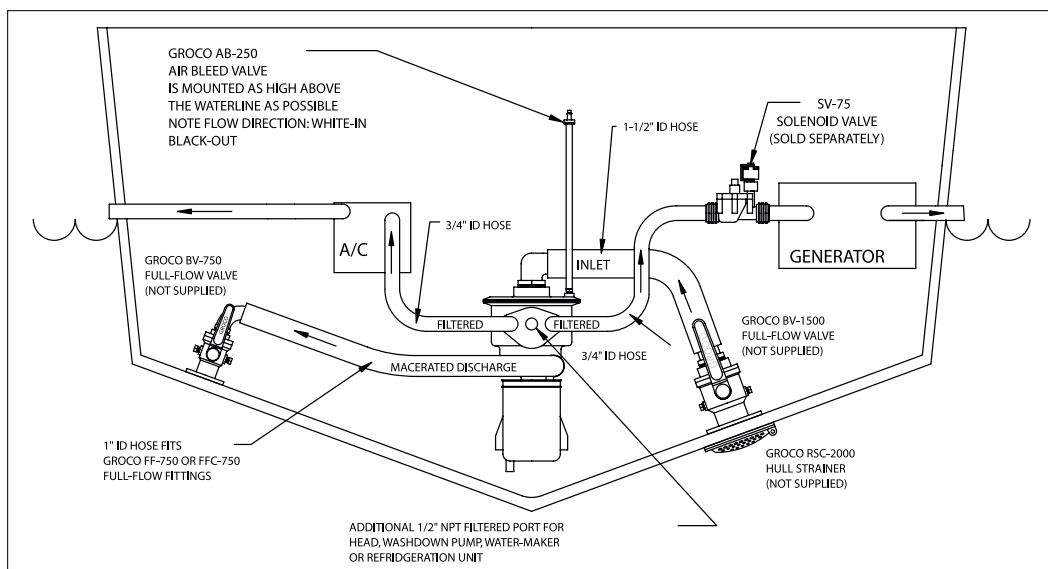
MODEL	INLET	OUTLET	DEBRIS DISCHARGE	A	B	C	RATIO	WEIGHT
911-1000 (VOLTAGE)	1" NPT	1" NPT	1" NPT	11.5	9.2	5.3	21:1	15
970-1500 (VOLTAGE)	1-1/2" NPT	(1) 1/2", (2) 3/4", (2) 1"	3/4" NPT	13.2	6.9	7.6	11:1	30
970-1515 (VOLTAGE)	1-1/2" NPT	1-1/2" NPT	3/4" NPT	13.2	6.9	7.6	11:1	30
970-2020 (VOLTAGE)	2" NPT	2" NPT	3/4" NPT	14.7	6.9	7.6	9:1	31
HSE-4000 (VOLTAGE)	4" NPT	4" NPT	1" NPT	31.7	13.0	13.0	10:1	123
HSEF-4000 (VOLTAGE)	4" FLANGE	4" FLANGE	1" NPT	31.7	16.5	12.5	10:1	144
HSEF-5000 (VOLTAGE)	5" FLANGE	5" FLANGE	1" NPT	31.7	16.5	12.5	8.1:1	160
HSEF-6000 (VOLTAGE)	6" FLANGE	6" FLANGE	1" NPT	31.7	16.5	12.5	6.7:1	173

FLANGE DETAILS: HSEF-4000 = 9.0" DIA., (8) .750 DIA. HOLES ON 7.5 BC  
HSEF-6000 = 11.0" DIA., (8) .875 DIA. HOLES ON 9.5 BC

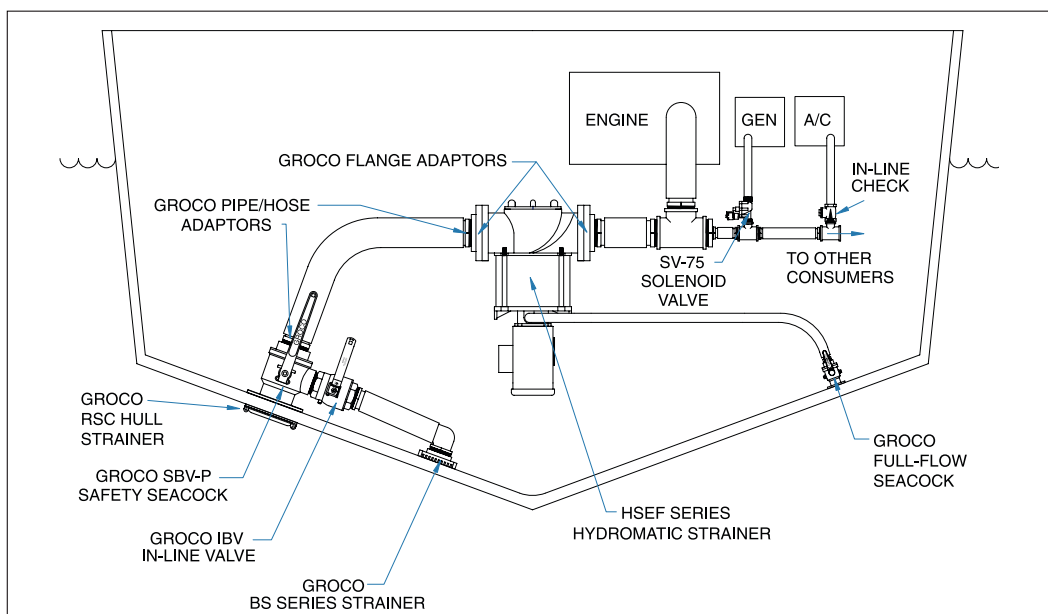
HSEF-5000 = 10.0" DIA., (8) .875 DIA. HOLES ON 8.5 BC



**911 SAMPLE INSTALLATION**



**970 SAMPLE INSTALLATION**



**HSE SAMPLE INSTALLATION**