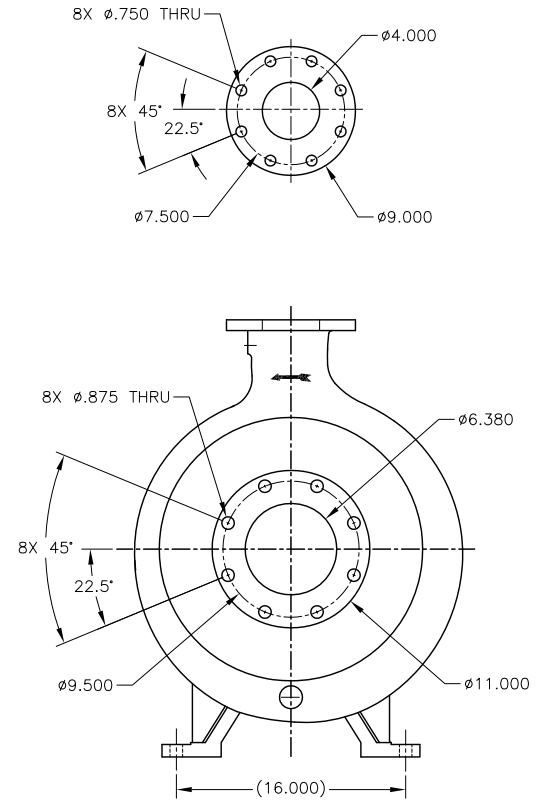
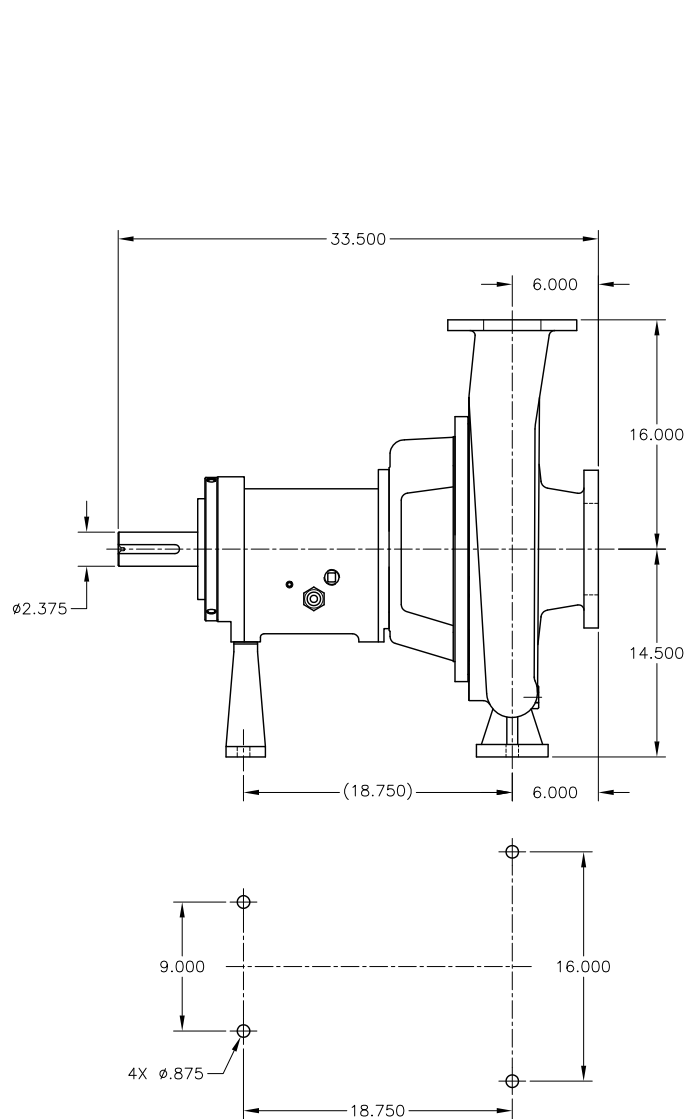


CAD generated and maintained drawing. All printed and electronic copies outside of Griswold's engineering database are "Uncontrolled" and shall be used for reference only.

REV.	DESCRIPTION	BY	APP.	DATE
A	6 X 4 - 17 A105 ANSI ASSEMBLY	M.H.		

NOTES: UNLESS OTHERWISE SPECIFIED

1. DIMENSIONS AND TOLERANCES PER ANSI Y14.5M-1982.
2. * INDICATES DIMENSIONS AND/OR FEATURES MODIFIED ON CURRENT REVISION LEVEL.
- * 3. THIS PUMP MAY HAVE TAPPED BOLT HOLES IN THE SUCTION FLANGE PER ANSI'S ALLOWANCE.



DO NOT SCALE DRAWING	
UNLESS OTHERWISE SPECIFIED DIMENSIONS ARE IN INCHES	
TOLERANCES ARE:	
FRACTIONS	± -
DECIMALS .XX	± -
.XXX	± -
ANGLES	± -
SCALE	1/1
SHEET	1 OF 1

GRISWOLD

GRISWOLD PUMP COMPANY
170 8th Street
Thomasville, GA 31792
PHONE: (800) 843-9222, FAX: (800) 752-2928

TITLE ASSEMBLY, 6 X 4 - 17 A105 ANSI

DRAWN BY	M. HIATT	DATE	02/25/09	ASSY. NO.	
CHECKED BY		DATE		DRAWING NO.	
APPROVED BY		DATE		6417A105	REV. A

THIS DOCUMENT AND ITS CONTENTS ARE PROPRIETARY TO WILSON PUMP AND ENGINEERING CO. ANY REPRODUCTION, DISCLOSURE OR USE OF THIS DOCUMENT IS EXPRESSLY PROHIBITED EXCEPT AS OTHERWISE AGREED TO IN WRITING.