

REPAIR PARTS

RPRIMELINE R4

Marlow Series Prime Line®

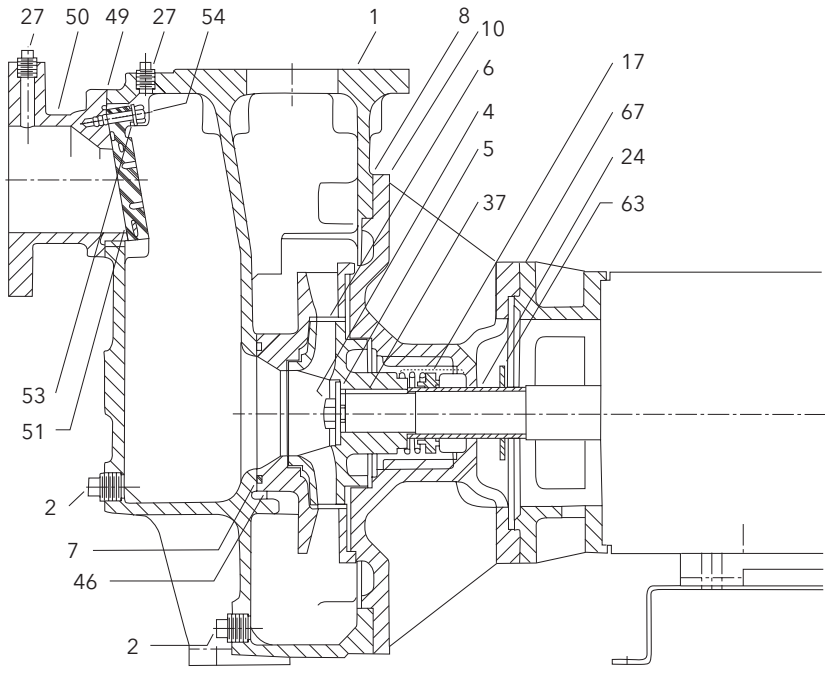
SELF-PRIMING CENTRIFUGAL PUMPS

REPAIR PARTS



 **GOULDS**
WATER TECHNOLOGY
a xylem brand

PRIME LINE® M2P - M4P PUMPS



PRIME LINE 2" PUMP END PARTS - WITH 140JM, 180JM AND S FRAME MOUNTED (MECHANICAL SEAL)

| Item No. | Description | Material | | Repair Part No. | | | |
|----------|-----------------------------------------|-----------------------|--------------------|--------------------|--------------------|--------------------|--------------|
| | | | | M2P1 | M2P2 | M2P3 | M2P4 |
| | | | | 2x2-6 | 2x2-4 | 2x2-5 | 2x2-7 |
| 1 | Casing | Cast Iron | | 45369020000R | | | |
| 6 | Impeller | Cast Iron | 1750 RPM | 45361020000R 6.88" | | | |
| | | | | 45361020650R 6.5" | | | |
| | | | | 45361020613R 6.13" | | | |
| | | 3450 RPM | | 45405020000R 4.88" | 45474020000R 5.69" | 45498020000R 6.88" | |
| | | | | 45405020463R 4.63" | 45474020544R 5.44" | 45498020663R 6.63" | |
| | 45405020438R 4.38" | | 45474020519R 5.19" | 45498020638R 6.38" | | | |
| | 45405020413R 4.13" | | 45474020494R 4.94" | 45498020613R 6.13" | | | |
| | | | | 45498020575R 5.75" | | | |
| 10 | Seal Housing | Iron | | 45362020000R | | | |
| 17 | Mechanical Seal Assembly 1 1/4" Bore | Car./Cer. Buna - STD. | | 27223200000R | | | |
| | | Car./Cer. Viton | | 30927000000R | | | |
| | | SilCar/SilCar Viton | | 46075200000R | | | |
| | | SilCar/SilCar EPR | | 44061000000R | | | |
| 24 | Shaft Sleeve | 316 SS | Close Coupled | 4K668 | | | |
| | | | S Frame | 4K669 | | | |
| 46 | Diffuser | Iron | | 45363020000R | 45406020000R | 45477020000R | 45500020000R |
| 50 | Suction Inlet | Iron | | 45375020000R | | | |
| 51 | Check Valve | BUNA-N | | 46617000000R | | | |
| | | Viton | | 46617200000R | | | |
| 53 | Keeper | 304SS | | 45297000000R | | | |
| 54 | Shoulder Screw | 416SS | | 46795000000R | | | |
| 67 | Motor Adapter | Iron | | NA | | | |
| 2 | Plug, Pipe - Drain | Zinc Plated Steel | 1/2 NPT | 6K68 | | | |
| 4 | Bolt, Impeller | SS w/Thread Lock | 3/8" | 13K43 | | | |
| 5 | Washer, Impeller | SS | 1 1/4 OD | 51557000000R | | | |
| 7 | O-Ring, Diffuser | BUNA-N | | C02495A3345302R | | | |
| | | Viton | | C02495A3345304R | | | |
| 8 | Gasket, Seal Hsg./Casing | Nitrile Acrylic | | 47102000000R | | | |
| 27 | Plug, Pipe - vent | Zinc Plated Steel | 1/4 NPT | 6K2 | | | |
| 37 | Key, Impeller | Steel | 3/16" x 3/16" x 1" | 4K11 | | | |
| 49 | Gasket, Suction Inlet | Nitrile Acrylic | | 47039000000R | | | |
| 63 | Slinger | Rubber | | 5K160 | | | |
| NS | HHC Screw (Inlet) | Zinc Plated Steel | 5/16-18 x 1.0 | 13K137 | | | |
| NS | Washer, Lock (Inlet) | 303SS | 3/8 | 13K117 | | | |
| NS | HHC Screw (Case) | Zinc Plated Steel | 3/8-16 x 1.0 | 13K194 | | | |
| NS | Washer, Lock (Case) | 303SS | 3/8 | 13K158 | | | |
| NS | HHC Screw (Motor) | Zinc Plated Steel | 3/8-16 x 1.0 | 13K194 | | | |
| NS | Washer, Lock (Motor) | 303SS | 3/8 | 13K158 | | | |
| NS | Bushing, Hex (Case Fill) | Cast Iron | 1" NPT-1/4" NPT | 6K178 | | | |

0000 * - For Repairs use "R" Number Below

NS - Not Shown

PRIME LINE 3" PUMP END PARTS - WITH 140JM, 180JM AND S FRAME MOUNTED (MECHANICAL SEAL)

| Item No. | Description | Material | | Repair Part No. | | | |
|----------|-----------------------------------------|-----------------------|------------------|--------------------|--------------------|--------------------|--------------------|
| | | | | M3P1 | M3P2 | M3P3** | M3P4** |
| | | | | 3x3-9 | 3x3-5 | 3x3-8 | 3x3-7 |
| 1 | Casing | Cast Iron | | 45353020000R | | | |
| 6 | Impeller | Cast Iron | 1750 RPM | 45336020000R 8.75" | | | 45754020000R 7.0" |
| | | | | 45336020850R 8.5" | | | 45754020675R 6.75" |
| | | | | 45336020825R 8.25" | | 45509020731R 7.31" | 45754020650R 6.5" |
| | | | | 45336020800R 8.0" | | 45509020694R 6.94" | 45754020625R 6.25" |
| | | | | 45336020775R 7.75" | | | 45754020600R 6.0" |
| | | | 3450 RPM | | 45421020000R 5.88" | | |
| | | | | 45421020550R 5.50" | | | |
| | | | | 45421020513R 5.13" | | | |
| | | | | 45421020475R 4.75" | | | |
| 10 | Seal Housing | Iron | | 45334020000R | | | |
| 17 | Mechanical Seal Assembly 1 1/4" Bore | Car./Cer. Buna - STD. | | 27223200000R | | | |
| | | Car./Cer. Viton | | 30927000000R | | | |
| | | SilCar/SilCar Viton | | 46075200000R | | | |
| | | SilCar/SilCar EPR | | 44061000000R | | | |
| 24 | Shaft Sleeve | 316 SS | Close Coupled | 4K668 | | | |
| | | | S Frame | 4K669 | | NA | NA |
| 46 | Diffuser | Iron | | 45335020000R | 45424020000R | 46194020000R | 46193020000 |
| 50 | Suction Inlet | Iron | | 45290020000R | | | |
| 51 | Check Valve | BUNA-N | | 46618000000R | | | |
| | | Viton | | 46618200000R | | | |
| 53 | Keeper | 304SS | | 45297000000R | | | |
| 54 | Shoulder Screw | 416SS | | 46795000000R | | | |
| 67 | Motor Adapter | Iron | | NA | | | |
| 2 | Plug, Pipe - Drain | Zinc Plated Steel | 1/2 NPT | 6K68 | | | |
| 4 | Bolt, Impeller | SS w/Thread Lock | 3/8" | 13K43 | | | |
| 5 | Washer, Impeller | SS | 1 1/4 OD | 51557000000R | | | |
| 7 | O-Ring, Diffuser | BUNA-N | | C02495A3455302R | | | |
| | | Viton | | C02495A3455304R | | | |
| 8 | Gasket, Seal Hsg./Casing | Nitrile Acrylic | | 47034000000R | | | |
| 27 | Plug, Pipe - vent | Zinc Plated Steel | 1/4 NPT | 6K2 | | | |
| 37 | Key, Impeller | Steel | 3/8" x 3/8" x 1" | 4K11 | | | |
| 49 | Gasket, Suction Inlet | Nitrile Acrylic | | 47038000000R | | | |
| 63 | Slinger | Rubber | | 5K160 | | | |
| NS | HHC Screw (Inlet) | Zinc Plated Steel | 3/8-16 x 1.25 | 13K80 | | | |
| NS | Washer, Lock (Inlet) | 303SS | 3/8" | 13K158 | | | |
| NS | HHC Screw (Case) | Zinc Plated Steel | 1/2-13 x 1.25 | 13K102 | | | |
| NS | Washer, Lock (Case) | 303SS | 3/8" | 13K128 | | | |
| NS | HHC Screw (Motor) | Zinc Plated Steel | 3/8-16 x 1.25 | 13K80 | | | |
| NS | Washer, Lock (Motor) | 303SS | 3/8" | 13K158 | | | |
| NS | Bushing, Hex (Case Fill) | Cast Iron | | 6K178 | | | |

0000 * - For Repairs use "R" Number Below

** - S - Bearing Frame Not Available

NS - Not Shown

PRIME LINE 2" & 3" PUMP END PARTS - (MECHANICAL SEAL) 210JP, 250JP, AND ML FRAME MOUNTED

| Item No. | Description | Material | Repair Part No. | | | | |
|----------|--------------------------------------|-----------------------|--------------------|--------------------|--------------------|--------------------|---------------------------|
| | | | M2P3** | M2P4** | M3P2** | M3P3 | M3P4 |
| | | | 2x2-5 | 2x2-7 | 3x3-5 | 3x3-8 | 3x3-7 |
| 1 | Casing | Cast Iron | | 45369020000R | | 45353020000R | |
| 6 | Impeller | Cast Iron | 1750 RPM | | | 45510020000R 8.06" | |
| | | | | | | 45510020769R 7.69" | |
| | | 3450 RPM | 45475020000R 5.69" | 45499020000R 6.88" | 45422020000R 5.88" | 45510020000R 8.06" | 45753020000R 7.0" |
| | | | 45475020544R 5.44" | 45499020663R 6.63" | 45422020550R 5.5" | 45510020769R 7.69" | 45753020675R 6.75" |
| | | | 45475020519R 5.19" | 45499020638R 6.38" | 45422020513R 5.13" | 45510020731R 7.31" | 45753020650R 6.5" |
| | 45499020613R 6.13" | 45422020475R 4.75" | 45510020694R 6.94" | 45753020625R 6.25" | | | |
| | | 45499020575R 5.75" | | | 45753020600R 6.0" | | |
| 10 | Seal Housing | Cast Iron | | 45476020000R | | 46615020000R | |
| 17 | Mechanical Seal Assembly 1¼" Bore | Car./Cer. Buna - STD. | | A05669E000R | | 46983000000R | |
| | | Car./Cer. Viton | | A05670E000R | | 46984000000R | |
| | | SilCar/SilCar Viton | | A05672E000R | | 10K186 | |
| | | SilCar/SilCar EPR | | 10K187 | | 10K220 | |
| 24 | Shaft Sleeve | 316 SS | Close Coupled | 4K713 | | 4K713 | |
| | | | S Frame | NA | NA | NA | 4K713 |
| 46 | Diffuser | Cast Iron | | 45477020000R | 45500020000R | 45423020000R | 45512020000R 45755020000R |
| 50 | Suction Inlet | Cast Iron | | 45375020000R | | 45290020000R | |
| 51 | Check Valve | BUNA-N | | 46617000000R | | 46618000000R | |
| | | Viton | | 46617200000R | | 46618200000R | |
| 53 | Keeper (valve/Inlet) | 304SS | | 45297000000R | | | |
| 54 | Shoulder Screw (valve/Inlet) | 416SS | | 46795000000R | | | |
| 67 | Motor Adapter | Cast Iron | 213-256JP FRM | 45434020000R | | 45434020000R | |
| | | | 284-326JP | NA | | NA | 45435020000R |
| 2 | Plug, Pipe - Drain | Zinc Plated Steel | ½ NPT | 6K68 | | | |
| 4 | Bolt, Impeller | SS w/Thread Lock | ½-13x1.38 | 13K155 | | | |
| 5 | Washer, Impeller | SS | 1¼ OD | 51556000000R | | | |
| 7 | O-Ring, Diffuser | BUNA-N | | C02495A3345302R | | C02495A3455302R | |
| | | Viton | | C02495A3345304R | | C02495A3455304R | |
| 8 | Gasket, Seal Hsg./Casing | Nitrile Acrylic | | 47102000000R | | 47034000000R | |
| 27 | Plug, Pipe - vent | Zinc Plated Steel | ¼ NPT | 6K2 | | | |
| 37 | Key, Impeller | Steel | ¼" x ¼" x 1½" | 4K261 | | | |
| 49 | Gasket, Suction Inlet | Nitrile Acrylic | | 47039000000R | | 47038000000R | |
| 63 | Slinger | Rubber | | 5K163 | | | |
| NS | HHC Screw (Inlet/Case) | Zinc Plated Steel | ⅝-18 x 1.0 | 13K137 | | NA | |
| | | | ⅝-16 x 1.25 | NA | | 13K80 | |
| NS | Washer, Lock (Inlet/Case) | 303SS | ⅝ | 13K117 | | NA | |
| | | | ⅜ | NA | | 13K158 | |
| NS | HHC Screw (Case/Hsg.) | Zinc Plated Steel | ⅝-16 x 1.25 | 13K80 | | NA | |
| | | | ½-13 x 1.25 | NA | | 13K102 | |
| NS | Washer, Lock (Case/Hsg.) | 303SS | ⅜ | 13K158 | | NA | |
| | | | ½ | NA | | 13K128 | |
| NS | HHC Screw (Adptr./Mtr.) | Zinc Plated Steel | ⅝-16 x 1.25 | 13K80 | | NA | |
| | | | ½-13 x 1.25 | NA | | 13K102 | |
| NS | Washer, Lock (Adptr./Mtr.) | 303SS | ⅜ | 13K158 | | NA | |
| | | | ½ | NA | | 13K128 | |
| NS | HHC Screw (Adptr./hsg.) | Zinc Plated Steel | ½-13 x 2.0 | 13K245 | | | |
| NS | Washer, Lock (Adptr./hsg.) | 303SS | ½ | 13K128 | | | |
| NS | Hex Nut (Adptr./hsg.) | Zinc Plated Steel | ½-13 UNC | 13K373 | | | |
| NS | Bushing, Hex (case fill) | Cast Iron | 1" NPT-¼" NPT | 6K178 | | | |

PRIME LINE 4" PUMP END PARTS - (MECHANICAL SEAL) 210JP, 250JP, AND ML FRAME MOUNTED

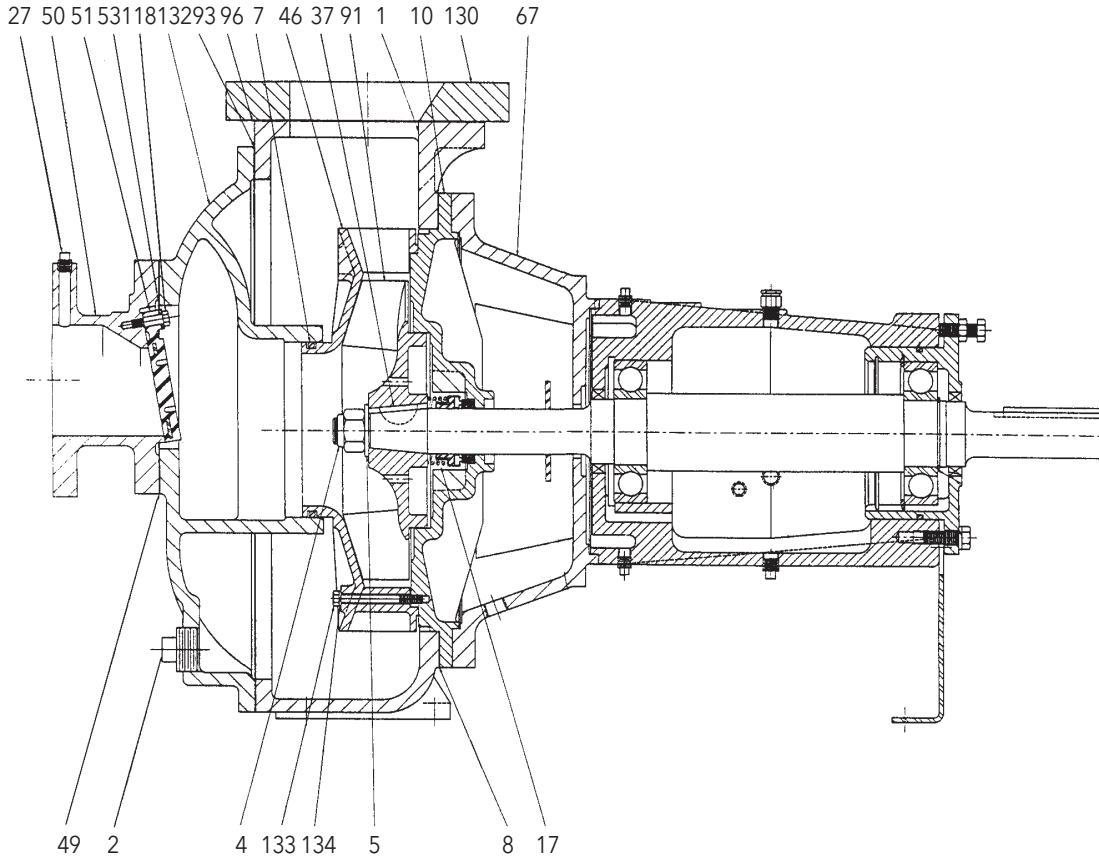
| Item No. | Description | Material | | Repair Part No. | |
|----------|--------------------------------------|-----------------------|---------------------|---------------------|--------------------|
| | | | | M4P1 | M4P2 |
| | | | | 4x4-10 | 4x4-9 |
| 1 | Casing | Cast Iron | | 45597020000R | |
| 6 | Impeller | Cast Iron | 1150 RPM | 45462020000R 10.63" | 45464020000R 9.0" |
| | | | | 45462021038R 10.38" | 45464020875R 8.75" |
| | | | | 45462021013R 10.13" | 45464020850R 8.5" |
| | | | | 45462020988R 9.88" | 45464020825R 8.25" |
| | | 1750 RPM | 45462020000R 10.63" | 45464020000R 9.0" | |
| | | | 45462021038R 10.38" | 45464020875R 8.75" | |
| | | | 45462021013R 10.13" | 45464020850R 8.5" | |
| | | | 45462020988R 9.88" | 45464020825R 8.25" | |
| 10 | Seal Housing | Cast Iron | | 45601020000R | |
| 17 | Mechanical Seal Assembly 1½" Bore | Car./Cer. Buna - STD. | | A05669E000R | |
| | | Car./Cer. Viton | | A05670E000R | |
| | | SilCar/SilCar Viton | | A05672E000R | |
| | | SilCar/SilCar EPR | | 10K187 | |
| 24 | Shaft Sleeve | 316 SS | Close Coupled | 4K713 | |
| | | | ML Frame | 4K713 | |
| 46 | Diffuser | Cast Iron | | 45598020000R | 45599020000R |
| 50 | Suction Inlet | Cast Iron | | 45291020000R | |
| 51 | Check Valve | BUNA-N | | 46619000000R | |
| | | Viton | | 46619200000R | |
| 53 | Keeper (valve/Inlet) | 304SS | | 45298000000R | |
| 54 | Shoulder Screw (valve/Inlet) | 416SS | | 46795000000R | |
| 67 | Motor Adapter | Cast Iron | 213-256JP FRM | 45434020000R | |
| | | | 284-326JP | 45435020000R | |
| 2 | Plug, Pipe - Drain | Zinc Plated Steel | ½ NPT | 6K68 | |
| 4 | Bolt, Impeller | SS w/Thread Lock | ½-13x1.38 | 13K155 | |
| 5 | Washer, Impeller | SS | 1½ OD | 51556000000R | |
| 7 | O-Ring, Diffuser | BUNA-N | | C02495A2495302R | |
| | | Viton | | C02495A2495304R | |
| 8 | Gasket, Hsg./Case | Nitrile Acrylic | | 47040000000R | |
| 27 | Plug, Pipe - vent | Zinc Plated Steel | ¼ NPT | 6K2 | |
| 37 | Key, Impeller | Steel | ¼" x ¼" x 1½" | 4K261 | |
| 49 | Gasket, Suction Inlet | Nitrile Acrylic | | 47036000000R | |
| 63 | Slinger | Rubber | | 5K163 | |
| NS | HHC Screw (Inlet/Case) | Zinc Plated Steel | ⅜-16 x 1.25 | NA | |
| | | | ⅝-11 x 2.0 | 13K228 | |
| NS | Washer, Lock (Inlet/Case) | 303SS | ⅜ | NA | |
| | | Zinc Plated Steel | ⅝ | 13K384 | |
| NS | HHC Screw (Case/Hsg.) | Zinc Plated Steel | ⅜-16 x 1.25 | 13K80 | |
| | | | ½-13 x 1.25 | NA | |
| NS | Washer, Lock (Case/Hsg.) | 303SS | ⅜ | 13K158 | |
| | | | ½ | NA | |
| NS | HHC Screw (Adptr./Mtr.) | Zinc Plated Steel | ½-13 x 1.25 | 13K102 | |
| NS | Washer, Lock (Adptr./Mtr.) | 303SS | ⅜ | NA | |
| | | | ½ | 13K128 | |
| NS | HHC Screw (Adptr./hsg.) | Zinc Plated Steel | ½-13 x 2.0 | 13K245 | |
| NS | Washer, Lock (Adptr./hsg.) | 303SS | ½ | 13K128 | |
| NS | Hex Nut (Adptr./hsg.) | Zinc Plated Steel | ½-13 UNC | 13K373 | |
| NS | Bushing, Hex (case fill) | Cast Iron | 1" NPT-¼" NPT | 6K178 | |

0000 * - For Repairs use "R" Number Below

** - ML - Bearing Frame Not Available

NS - Not Shown

PRIME LINE® M4E AND M6E PUMPS – REPAIR PART IMAGE

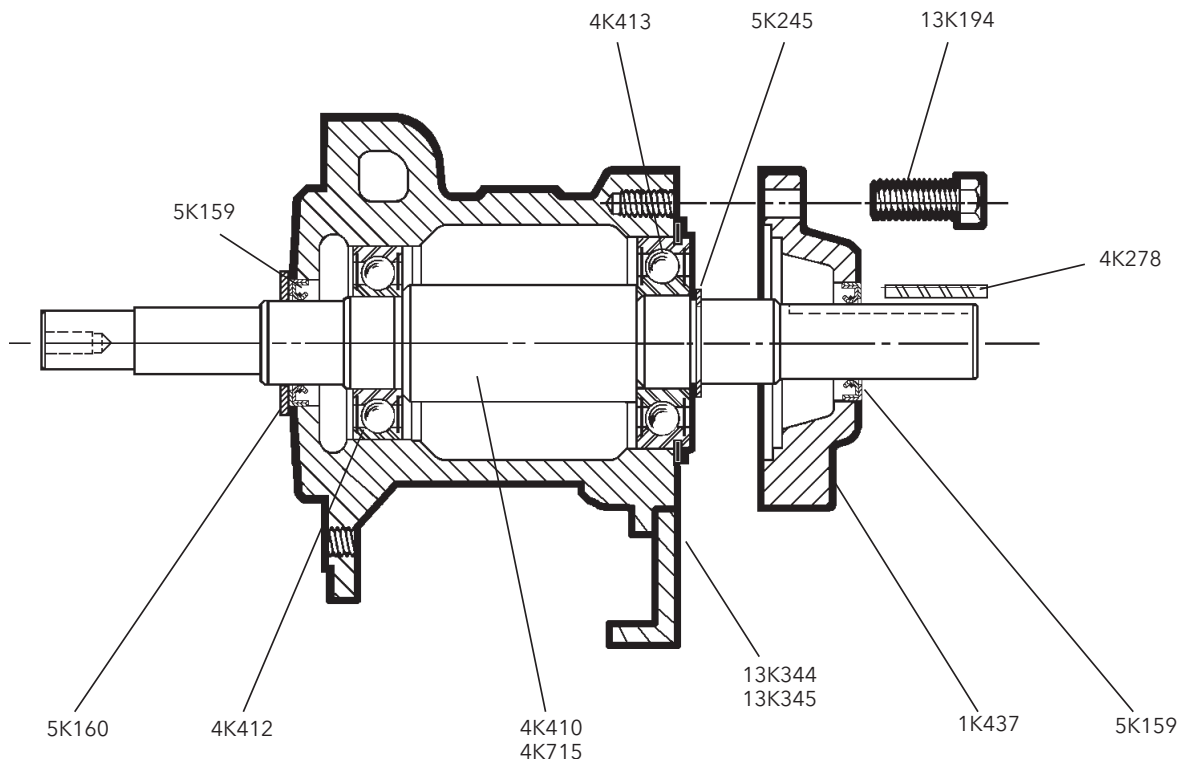


PRIME LINE 6" PUMP END PARTS - (MECHANICAL SEAL) E-SERIES FRAME MOUNTED

| Item No. | Description | Material | Repair Part No. | | | | | |
|----------|--------------------------------------------|----------------------------|--------------------|--------------------|--------------------|--------------------|--------------------|--------------------|
| | | | M4E1 | | M6E1 | | M6E2 | |
| | | | 4x4-12 | | 6x6-11 (Open Imp.) | | 6x6-12 | |
| 1 | Casing | Cast Iron | 29394040000R | | | | | |
| 6 | Impeller | Impeller Material | Cast Iron | 316SS | Cast Iron | 316SS | Cast Iron | |
| | | 1150 RPM Trim Diameters | | | 37890020000R 11.5" | 37890080000R 11.5" | 38901020000R 12.5" | |
| | | | | | 37890021100R 11.0" | 37890081100R 11.0" | 38901021200R 12.0" | |
| | | | | | 37890021050R 10.5" | 37890081050R 10.5" | 38901021150R 11.5" | |
| | | | | | 37890021000R 10.0" | 37890081000R 10.0" | 38901021100R 11.0" | |
| | | | | | 37890020950R 9.5" | 37890080950R 9.5" | | |
| | | 1750 RPM Trim Diameters | | 46016020000R 12.0" | 46016060000R 12.0" | 37890020000R 11.5" | 37890080000R 11.5" | 38901020000R 12.5" |
| | | | | 46016021150R 11.5" | 46016061150R 11.5" | 37890021100R 11.0" | 37890081100R 11.0" | 38901021200R 12.0" |
| | | | | 46016021100R 11.0" | 46016061100R 11.0" | 37890021050R 10.5" | 37890081050R 10.5" | 38901021150R 11.5" |
| | | | | 46016021050R 10.5" | 46016061050R 10.5" | 37890021000R 10.0" | 37890081000R 10.0" | 38901021100R 11.0" |
| | 46016021000R 10.0" | | 46016061000R 10.0" | 37890020950R 9.5" | 37890080950R 9.5" | | | |
| 10 | Seal Housing | Cast Iron | 21391020000R | | 22939020000R | | 21391020000R | |
| | | 316SS | 21391040000R | | NA | | NA | |
| 17 | Mechanical Seal Assembly 1 3/4" Bore | Car./Cer. Buna - STD. | 25357200000R | | | | | |
| | | Car./Cer. Viton | 37646000000R | | | | | |
| | | SilCar/SilCar Viton | 46558000000R | | | | | |
| | | SilCar/SilCar EPR | 43741000000R | | | | | |
| 46 | Diffuser | Cast Iron | 29365020000R | NA | 36676020000R | NA | 29516020000R | |
| | | 316SS | NA | 29365040000R | NA | 36676080000R | NA | |
| 50 | Suction Inlet | Cast Iron | 45291020000R | | 45292020000R | | | |
| 51 | Check Valve | BUNA-N | 46619000000R | | 46620000000R | | | |
| | | Viton | 46619200000R | | 46620200000R | | | |
| 53 | Keeper | 304SS | 45298000000R | | | | | |
| 67 | Frame Adapter | Cast Iron | 45030020000R | | | | | |
| 118 | Shoulder Screw | 416SS | 46795000000R | | | | | |
| 130 | Adapter Flange, Discharge | Cast Iron | NA | | 29513020000R | | | |
| 132 | Cover, Case | Cast Iron | 26484020000R | | 29515020000R | | | |
| 2 | Plug, Pipe - Drain | Zinc Plated Steel | 1 1/4" NPT | 6K176 | | | | |
| 4 | Nut, Impeller (self locking) | Zinc Plated Steel | 1"-14 | 22878000000R | | | | |
| 5 | Washer, Belleville (Impeller) | 17-7PH | 2" OD | 91058 201 2452R | | | | |
| 7 | O-Ring, Diffuser | BUNA-N | | C02495A4385302R | | | | |
| | | Viton | | C02495A4385304R | | | | |
| 8 | Gasket, Seal Hsg./Casing | Nitrile Acrylic | | 21318000000R | | | | |
| 27 | Plug, Pipe - vent | Zinc Plated Steel | 1/4 NPT | 6K2 | | | | |
| 49 | Gasket, Suction Inlet | Nitrile Acrylic | | 47036000000R | 20049000000R | | | |
| 93 | Gasket, Cover/Casing | Nitrile Acrylic | | 21201000000R | | | | |
| 96 | Gasket, Adapter Flange | Nitrile Acrylic | | NA | 27620000000R | | | |
| 133 | HHC Screw (Diffuser) | 303SS | 5/16-18 x 2.50 | 13K387 | NA | | | |
| | | | 5/16-18 x 3.25 | NA | 13K388 | | | |
| 134 | Washer, Lock (Diffuser) | 303SS | 5/16 | 13K117 | | | | |
| NS | HHC Screw (Inlet/Case) | Zinc Plated Steel | 5/8-11 x 2.0 | 13K228 | 13K383 | | | |
| | | | 5/8-11 x 1.75 | 13K382 | NA | NA | | |
| NS | Washer, Lock (Inlet/Case) | Zinc Plated Steel | 5/8 | 13K384 | 13K386 | | | |
| NS | HHC Screw (Case) | Zinc Plated Steel | 1/2-13 x 2.25 | 13L40 | | | | |
| NS | Washer, Lock (Case) | 303SS | 1/2 | 13K128 | | | | |
| NS | HHC Screw (Cover) | Zinc Plated Steel | 5/8-11 x 1.5 | 13K247 | | | | |
| NS | Washer, Lock (Cover) | Zinc Plated Steel | 5/8 | 13K384 | | | | |
| NS | Soc.Hd C Screw (Adptr. Flg.) | Zinc Plated Steel | 5/8-11 x 1.5 | NA | 13K385 | | | |
| NS | HHC Screw (Motor Adptr.) | Zinc Plated Steel | 5/8-11 x 1.75 | 13K382 | | | | |
| NS | Washer, Lock (Motor Adptr.) | Zinc Plated Steel | 5/8 | 13K384 | | | | |
| NS | Bushing, Hex (Case Fill) | Cast Iron -paint | 1 1/4"-1/4" NPT | 6K177 | | | | |

0000 * - For Repairs use "R" Number Below NS - Not Shown

S-GROUP POWER FRAME FOR PRIME LINE (MECHANICAL SEAL ONLY)



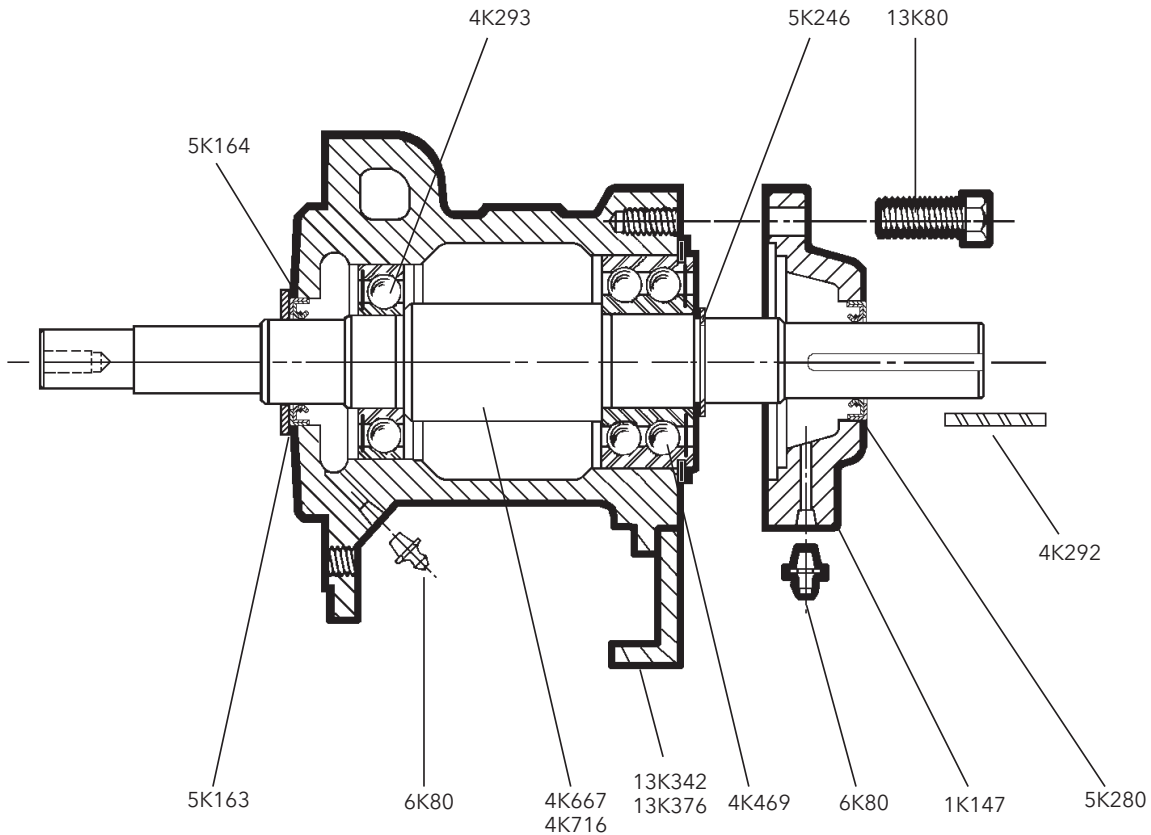
Lubrication: Greased For Life

| Description | Complete Frame Repair # | | 15K65 | 15K66 |
|----------------------------|-------------------------|----------------|--------------------------------|-------|
| | Material | | Repair Part No. | |
| Shaft, JM - Frame Assembly | CS | | 4K410 | NA |
| | SS | | NA | 4K715 |
| Brg. Cover S Grp (59519) | CI | | 1K437 | |
| Bearing Frame (59506) | CI | | Order Complete Assembly | |
| Bearing S Frame Thrust GFL | Steel | SKF 6307 | 4K413 | |
| Deflector S Frame | Rubber | | 5K160 | |
| Bearing S Frame Radial GFL | Steel | SKF 6207 | 4K412 | |
| Lip Seal | BUNA/STL | | 5K159 | |
| Hex Head Screw (4 pack) | CS | 3/8-16x1.0 | 13K194 | |
| Retaining Ring | STL | | 5K245 | |
| KEY (cplg) | SS | 1/4 x 1/4x1.38 | 4K278 | |
| Foot, Mtg. | Steel | 2PL1-4 | 13K344 | |
| | | 3PL1 & 2 | 13K345 | |

S-Frame Used on M2P1, M2P2, M2P3, M2P4, M3P1, and M3P2.

GFL - Grease for Life

ML POWER FRAME FOR PRIMELINE (MECHANICAL SEAL ONLY)



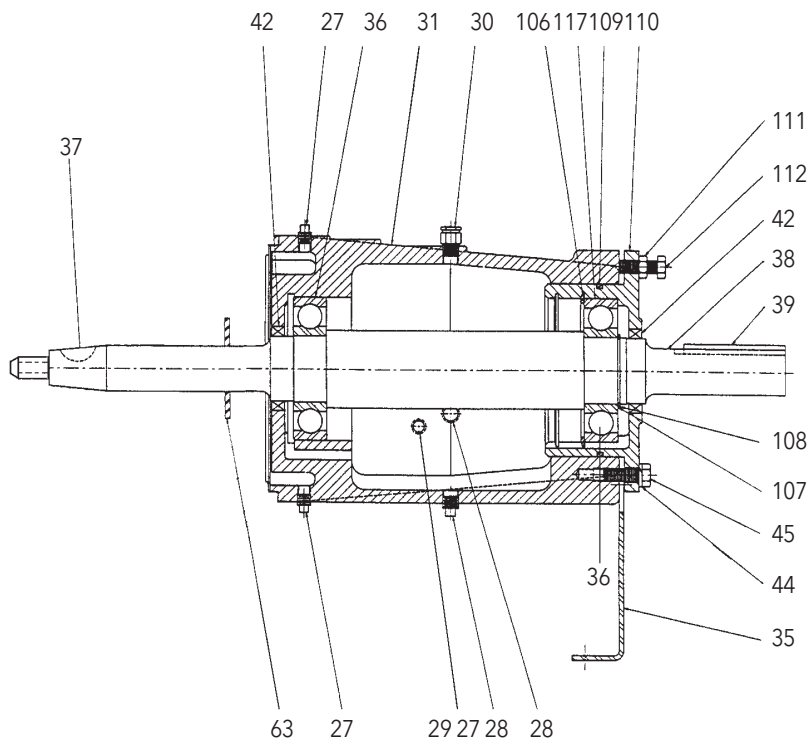
Lubrication: Regreasable

| Description | Complete Frame Repair # | | 15K67 | 15K68 |
|-------------------------------|-------------------------|-----------------|--------------------------------|-------|
| | Material | | Repair Part No. | |
| Shaft, JP - Frame Assembly | CS | | 4K667 | |
| | SS | | | 4K716 |
| Bearing Cover M Frame (59506) | CI | | 1K147 | |
| Bearing Frame (59505) | CI | | Order Complete Assembly | |
| Bearing, Thrust L Frame | STL | SKF 5310 | 4K469 | |
| Deflector M Frame | Rubber | | 5K163 | |
| Bearing, Rad. M Frame | STL | SKF 6309 | 4K293 | |
| Dr. Fitting (Grease) | STL | | 6K80 | |
| Lip Seal - Inboard | BUNA/Steel | | 5K164 | |
| Lip Seal - Outboard | BUNA/Steel | | 5K280 | |
| Hex Head Screw | CS | 3/8-16X1.25 | 13K80 | |
| Retaining Ring | STL | | 5K246 | |
| KEY (Coupling) | CS | 3/8 x 3/8 x 3.0 | 4K292 | |
| Lockwasher | SS | 3/8 | 13K158 | |
| Foot, Mtg. | Steel | 3PL3 & 4 | 13K342 | |
| | | 4PL1 & 2 | 13K376 | |

NS - Not Shown

ML-Frame Used on M3P3, M3P4, M4P1, and M4P2.

PRIME LINE® M4E1, M6E1 AND M6E2 PUMPS



| Complete Frame Repair # | | | 15K69 | 15K70 | 15K71 | 15K72 |
|-------------------------|--------------------------------|--------------|--------------------------------|-----------------|--------------|----------------|
| Item No. | Description | Material | Repair Part No. | | | |
| 38 | Shaft | Steel | 47110000000R | | 47109000000R | |
| | | 316SS | | 47110200000R | | 47109100000R |
| 110 | Housing, Thrust Bearing | CI | 45341020000R | | | |
| 31 | Housing, Bearing (45366010000) | CI | Order Complete Assembly | | | |
| 27 | Pipe Plug | Steel | ¼" NPT | 6K2 | | |
| 28 | Pipe Plug | Steel | ⅜" NPT | 6K3 | | |
| 30 | Filter Vent, | Steel | | 40234000000R | | |
| 35 | Foot, Mtg. | Steel | | 46000000000R | | |
| 36 | Bearing Ball (Inbd. & Outbd.) | Steel | SKF 6313 | 8050 313600000R | | |
| 37 | Key, Woodruff (Impeller) | Carbon Steel | ⅜" x 1 ¼" | NA | | 49501 29 2213R |
| | | 316SS | | | | 49501 29 2229R |
| | | Carbon Steel | ⅜" x 1 ½" | 49501 26 2213R | | NA |
| | | 316SS | | 49501 26 2229R | | |
| 39 | Key, Sq. (Coupling) | CS | ⅜" x ⅜" x 4" | 49589 207 2213R | | |
| 42 | Oil Seal | Nitrile | 410752 | 8690-10752R | | |
| 44 | Lockwasher | SS | ½" | 13K128 | | |
| 45 | HHC Screw | CS | ½-13 x 1 ½" | 13K44 | | |
| 63 | Slinger | Rubber | 1 ¼" ID | 21608000000R | | |
| 106 | Retaining Ring (Waldes) | CS | N5002-550 | 58101 550 2210R | | |
| 107 | Retaining Ring (Waldes) | CS | N5100-255 | 54496 255 2210R | | |
| 109 | O-Ring, Brg. Housing | BUNA | | C02495A3625302R | | |
| 111 | Nut, Jam Hex ½" UNC | CS | ½" UNC | 49507 157 5429R | | |
| 112 | HHC Screw | CS | ½-13 x 2 ¼" | 13L40 | | |
| NS | Lockwasher | Steel | ⅜" | 13K384 | | |
| NS | Window, Sight | Steel/Glass | | A01154A03R | | |
| NS | Shim Brg Hsg (as required) | Steel | | 45399000000R | | |
| NS | Shim Brg Hsg (as required) | Steel | | 45400000000R | | |
| NS | HHC Screw (Foot) | CS | ⅜-11 x 1 ¼" | 13K240 | | |

NS - Not Shown

Xylem |'zīləm|

- 1) The tissue in plants that brings water upward from the roots;
- 2) a leading global water technology company.

We're a global team unified in a common purpose: creating advanced technology solutions to the world's water challenges. Developing new technologies that will improve the way water is used, conserved, and re-used in the future is central to our work. Our products and services move, treat, analyze, monitor and return water to the environment, in public utility, industrial, residential and commercial building services, and agricultural settings. With its October 2016 acquisition of Sensus, Xylem added smart metering, network technologies and advanced data analytics for water, gas and electric utilities to its portfolio of solutions. In more than 150 countries, we have strong, long-standing relationships with customers who know us for our powerful combination of leading product brands and applications expertise with a strong focus on developing comprehensive, sustainable solutions.

For more information on how Xylem can help you, go to www.xylem.com



Xylem Inc.
2881 East Bayard Street Ext., Suite A
Seneca Falls, NY 13148
Phone: (800) 453-6777
Fax: (888) 322-5877
www.gouldswatertechnology.com

Goulds is a registered trademark of Goulds Pumps, Inc. and is used under license.
© 2017 Xylem Inc. RPRIMELINE R4 December 2017