

Model ICS-F

Dimension Print

SECTION 1



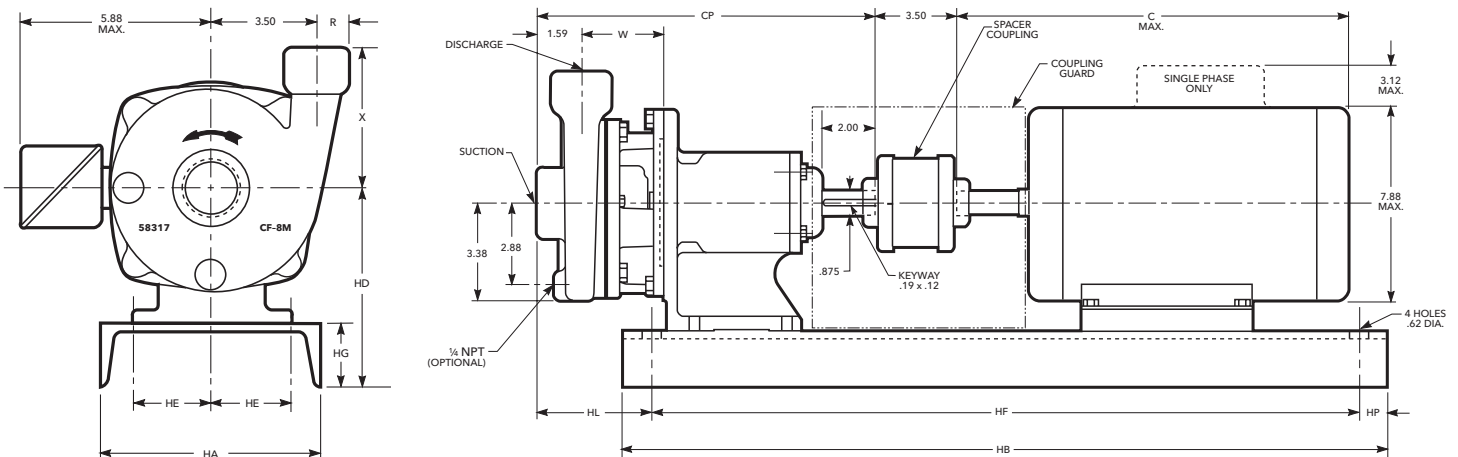
STAINLESS STEEL FRAME-MOUNTED CENTRIFUGAL PUMPS

ENGINEERING DATA

Channel Steel Bedplate	Installation Drawing No. 119-62	Certified for construction purposes <input type="checkbox"/> For Approval For Record <input type="checkbox"/>
Clockwise Rotation Viewed from Drive End		By _____

Signature

Date



WEIGHTS AND DIMENSIONS - DETERMINED BY PUMP

Pump Size	Suction NPT	Discharge NPT	CP	R	W	X	Weight Max.	HL Frame		
								56	140	180
1 x 1¼-5	1¼	1	12.16	.94	3.01	4.62	38	5.73		3.85
1¼ x 1½-5	1½	1¼	12.03	1.06	2.88	4.56	38	5.60		3.72

NOTE:

1. Pumps will be shipped with top vertical discharge as standard, for other orientations, remove casing bolts, rotate to desired position, and tighten ⅜" bolts to 24 lbs.-ft.
2. Dimensions in inches, weight in pounds.
3. Not to be used for construction purposes unless certified.
4. Motor dimensions may vary with motor manufacturers.

AVAILABLE MOTOR AND BEDPLATE WEIGHTS AND DIMENSIONS

Motor Frame	HA	HB	HD	HE	HF	HG	HP	Weight Max.	Shims	HP @ 3500 RPM				Weight Max.	C Max.		
										1 Phase		3 Phase					
										ODP	TEFC	ODP	TEFC				
56	8	26	6.87	3.12	22.38	2.38	1.00	30	1.00	½ - 1½	½ - 1½	½ - 1	½ - 1	45	13		
143T										–	–	1½	1½			45	13.38
145T										2	2	2-3	2				
182T	10	7.25	3.75	24	2.75	.88	43	–	3	3	5	3	63	16.62			
184T									5	5	–	5			112	18.12	

NOTE: Dimensions in inches, weight in pounds.

Xylem Inc.

2881 East Bayard Street Ext., Suite A, Seneca Falls, NY 13148

Phone: (800) 453-6777 Fax: (888) 322-5877

www.gouldswatertechnology.com

