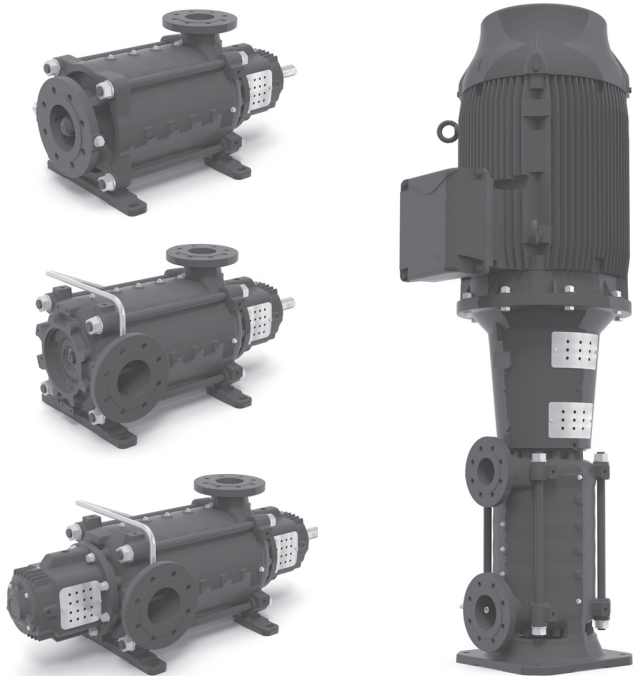


REPAIR PARTS

eMP-PL



e-MP Series

e-MPA, e-MPD, e-MPR & e-MPV

50A/B, 65A/B, 100A/B, 125A/B & 150A/B

REPLACEMENT PARTS

TABLE OF CONTENTS

Numbering System for e-MP Pump & Motor Combination.....	3
Exploded View e-MPA	4
Exploded View e-MPD	5
Exploded View e-MPR	6
Exploded View e-MPV	7
Exploded View Index	8
Parts List e-MP50A/B	9-11
Kit Part Number e-MP50A/B	12-13
Parts List e-MP65A/B	14-16
Kit Part Number e-MP65A/B	17-18
Parts List e-MP100A/B.....	19-21
Kit Part Number e-MP100A/B	22-23
Parts List e-MP125A/B.....	24-26
Kit Part Number e-MP125A/B	27
Parts List e-MP150A/B.....	28-30
Kit Part Number e-MP150A/B	31
Vertical Coupling	32-33
Horizontal Coupling	34-35

IDENTIFICATION CODE

e-M P V 1 2 5 B - 0 2 A B R S - 0 5 0 0 T T F 2 6 B - N N N 4

Pump Type [2 characters]
 [MP] = Highly efficient and flexible Multistage, radially split, segmented casing Pump, the new member of Xylem's e-product range

Configuration [1 character]
 [A] = Horizontal design
 Axial suction, radial discharge
 1 Roller bearing discharge side
 1 Slide bearing suction side
 [R] = Horizontal design
 Radial suction and discharge
 1 Roller bearing discharge side
 1 Slide bearing suction side
 [V] = Vertical design
 Radial suction and discharge
 1 Roller bearing discharge side
 1 Slide bearing suction side
 [D] = Horizontal design
 Radial suction and discharge
 2 Roller bearings
 Double bearing

Pump size [3 to 4 characters]
 [50A] [65A] [100A] [125A] [150A]
 [50B] [65B] [100B] [125B] [150B]

Number of stages/impellers [2 characters], e.g.: [04] = 4 stages

Combination of full and trimmed impellers [1 character]:
 [A] = all impeller full diameter
 [B] = trimmed/full impellers combination 1
 [C] = trimmed/full impellers combination 2
 [D] = trimmed/full impellers combination 3
 [E] = trimmed/full impellers combination 4
 [X] = duty point trimmed

Flange orientation [1 character]
MPA
 [A] = End suction, top discharge (code AO)
 [B] = End suction, left discharge (code AL)
 [C] = End suction, right discharge (code AR)
MPD and MPR
 [A] = Left suction, top discharge (code LO)
 [B] = Right suction, top discharge (code RO)
 [C] = Top suction, top discharge (code OO)
 [D] = Left suction, right discharge (code LR)
 [E] = Top suction, right discharge (code OR)
 [F] = Right suction, right discharge (code RR)
 [G] = Right suction, left discharge (code RL)
 [H] = Top suction, left discharge (code OL)
 [J] = Left suction, left discharge (code LL)
MPD shaft driven from the suction end
 [1] = Left suction, top discharge (code LOS)
 [2] = Right suction, top discharge (code ROS)
 [3] = Top suction, top discharge (code OOS)
 [4] = Left suction, right discharge (code LRS)
 [5] = Top suction, right discharge (code ORS)
 [6] = Right suction, right discharge (code RRS)
 [7] = Right suction, left discharge (code RLS)
 [8] = Top suction, left discharge (code OLS)
 [9] = Left suction, left discharge (code LLS)
MPV
 [A] = Left suction, left discharge (code OO)
 [B] = Left suction, rear discharge (code OR)
 [C] = Left suction, front discharge (code OL)
 [D] = Left suction, right discharge (code OG)

NOTE:
 1) "e" in front of MP is used for all marketing materials and in the selection tools.
 2) "e" in front of MP is NOT used on the name plate and NOT in denomination of pumps.
 3) Not used nomenclature characters, e.g. if the character description is [] are skipped and the next used character is shifted to the left.

ANSI discharge flange class [1 character]
 [R] = 150
 [S] = 300
 [T] = 600

ANSI suction flange class [1 character]
 [R] = 150
 [S] = 300

Motor hp [2 to 4 characters]
 e.g. [0500] = 500HP

Motor enclosure [1 character]
 [D] = ODPE
 [T] = TEPE
 [W] = WDPE
 [X] = XPE

Frame size [1 character]
 [B] = 182T/184T
 [C] = 213T/215T
 [D] = 254T/256T
 [E] = 284TS/286TS
 [F] = 284T/286T
 [G] = 324TS/326TS
 [H] = 324T/326T
 [J] = 364TS/365TS
 [K] = 364T/365T
 [L] = 404TS/405TS
 [M] = 404T/405T
 [N] = 444TS/445TS
 [P] = 444T/445T
 [R] = 447TS/449TS
 [S] = 447T/449T
 [T] = 5007S/5008S
 [U] = 5009S
 [V] = 5010S/5011S
 [W] = 586S/587S
 [X] = 588S/589S
 [Y] = 6808/6809
 [Z] = other

Motor type [1 character]
 [F] = Factory choice
 [X] = Other
 [A] = Motor not part of scope

No. of poles [1 character]
 [2] = 2-poles
 [4] = 4-poles

Seal Type [1 character]
 [] = Mechanical seal, standard
 [C] = Cartridge seal
 [P] = Soft packing

Mechanical Seal and O-Ring materials [1 character]
 [4] = Carbon/SiC/EPDM
 [2] = Carbon/SiC/FPM
 [Z] = SiC/SiC/EPDM
 [W] = SiC/SiC/FPM
 [N] = Tungsten carbide/ SiC/FPM
 [X] = Others
 [-] = Soft packing

Diffuser material [1 character]
 [C] = Cast iron
 [N] = Stainless steel
 [R] = Duplex
 [T] = Super duplex
 [X] = Others

Impeller material [1 character]
 [C] = Cast iron
 [B] = Bronze
 [N] = Stainless steel
 [R] = Duplex
 [T] = Super duplex
 [X] = Others

Casing material [1 character]
 [C] = Cast iron
 [D] = Ductile iron
 [N] = Stainless steel
 [R] = Duplex
 [T] = Super duplex
 [X] = Others

Motor frequency and voltage [2 characters]
50 Hz
 [5B] = 190/380-415V
 [5C] = 190/380V
 [5D] = 220V
 [5E] = 380V
 [5F] = 415V
 [5X] = Other Voltage
60 Hz
 [6B] = 208-230/460V
 [6C] = 230/460V
 [6D] = 200V
 [6E] = 230V
 [6F] = 460V
 [6G] = 575V
 [6X] = Other voltage

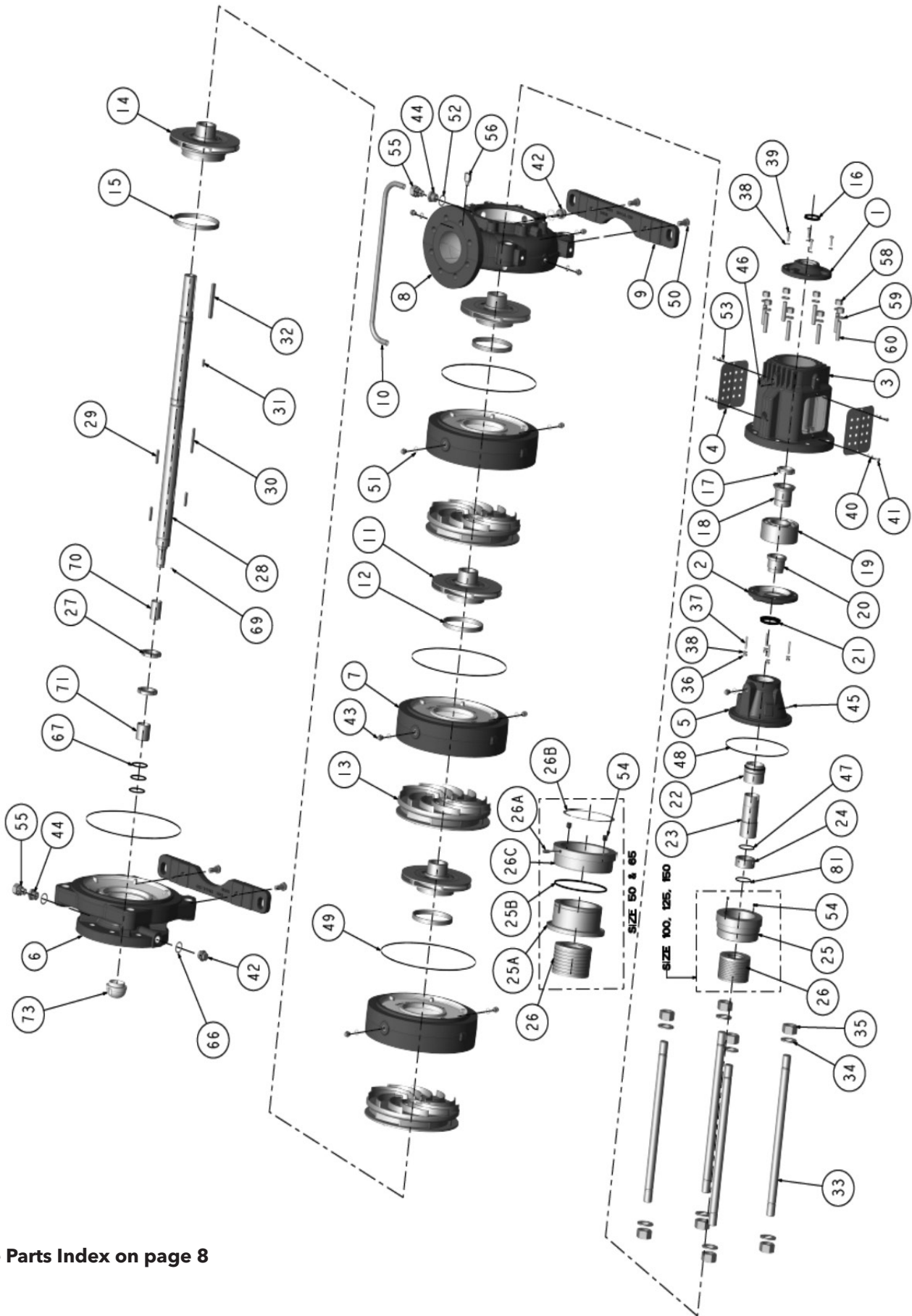
EXAMPLES:

Pump coupled with motor
 MPV125B-02ABRS-0500TTF26B-NNN4
 Series e-MP, vertical configuration, radial suction and discharge, size DN125, hydraulic B, 2 stages/impellers, all impellers with full diameter, flange orientation: left suction and rear discharge, ANSI suction flange class 150, ANSI discharge flange class 300, 500HP factory choice motor with TEPE enclosure, 5009SD frame size, 2-poles, 60Hz at 208-230/460V, stainless steel casings, stainless steel impeller, stainless steel diffusers, mechanical seal Carbon/SiC/EPDM.

Pump mounted on frame, with coupling, motor not part of scope
 MPV125B-02ABRS-0500TTA26B-NNN4
 Series e-MP, vertical configuration, radial suction and discharge, size DN125, hydraulic B, 2 stages/impellers, all impellers with full diameter, flange orientation: left suction and rear discharge, ANSI suction flange class 150, ANSI discharge flange class 300, to be used with motor frame size 5009SD, 2-poles (motor not part of scope), stainless steel casings, stainless steel impeller, stainless steel diffusers, mechanical seal Carbon/SiC/EPDM.

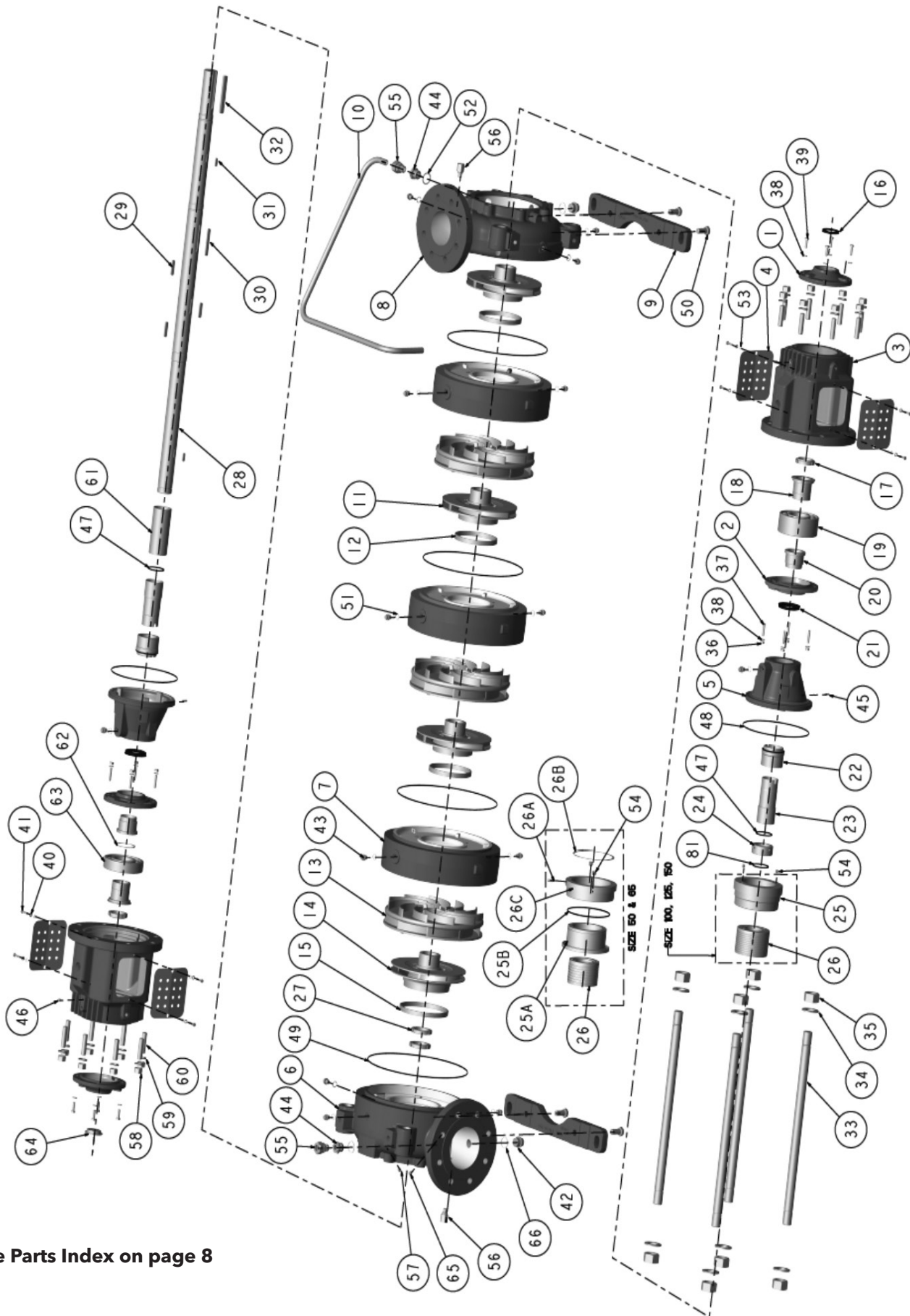
Bareshaft pump (only for horizontal configurations)
 MPA125B-02AARS-2-NNN4
 Series e-MP, horizontal configuration, model MPA, size DN125, hydraulic B, 2 stages/impellers, all impellers with full diameter, flange orientation: end suction and top discharge, ANSI suction flange class 150, ANSI discharge flange class 300, 2-poles (motor and coupling not part of scope), stainless steel casings, stainless steel impeller, stainless steel diffusers, mechanical seal Carbon/SiC/EPDM. of scope), stainless steel casings, stainless steel impeller, stainless steel diffusers, mechanical seal Carbon/SiC/EPDM.

e-MPA SIZE 50, 65, 100, 125 AND 150 - EXPLODED VIEW



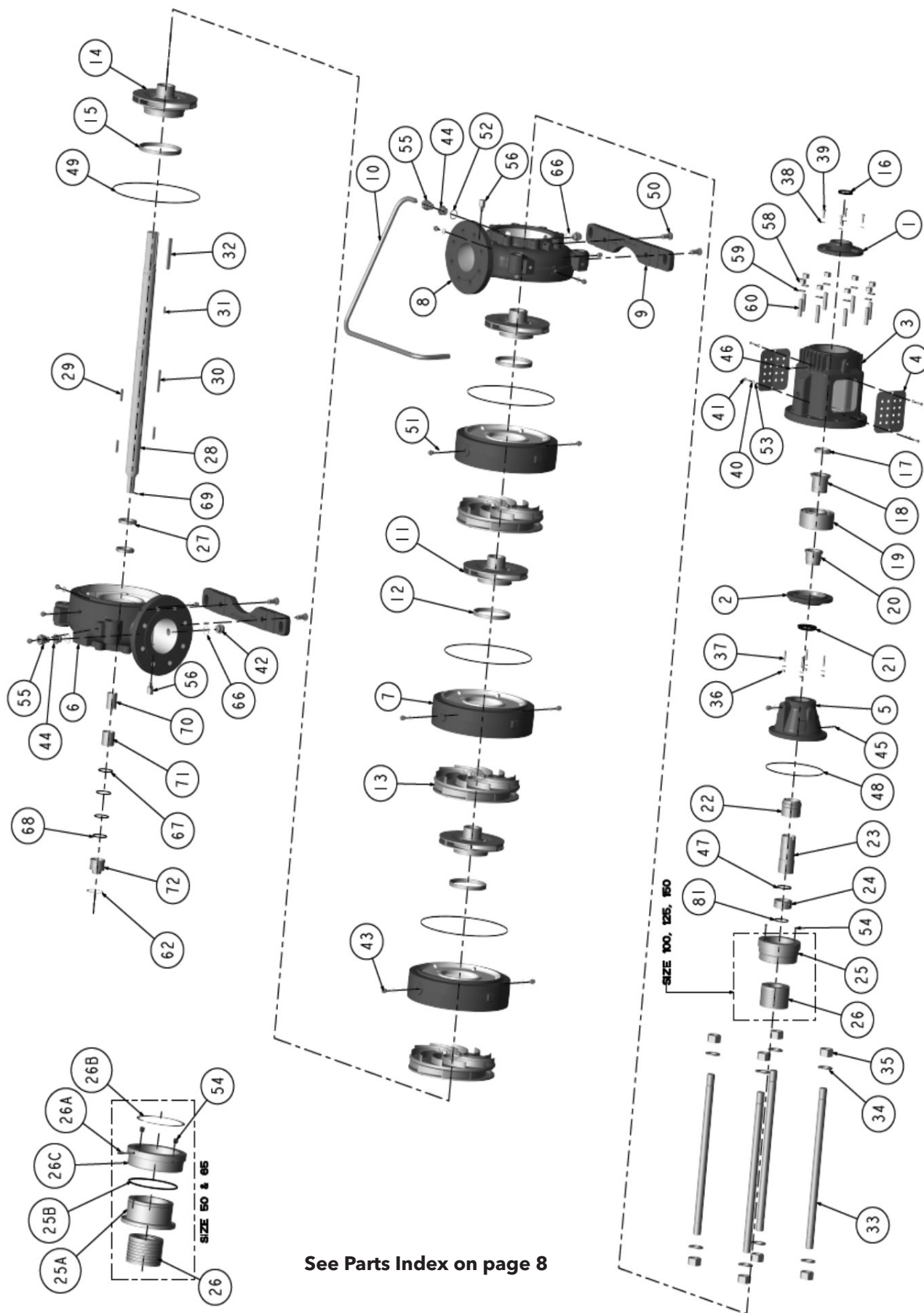
See Parts Index on page 8

e-MPD SIZE 50, 65, 100, 125 AND 150 - EXPLODED VIEW

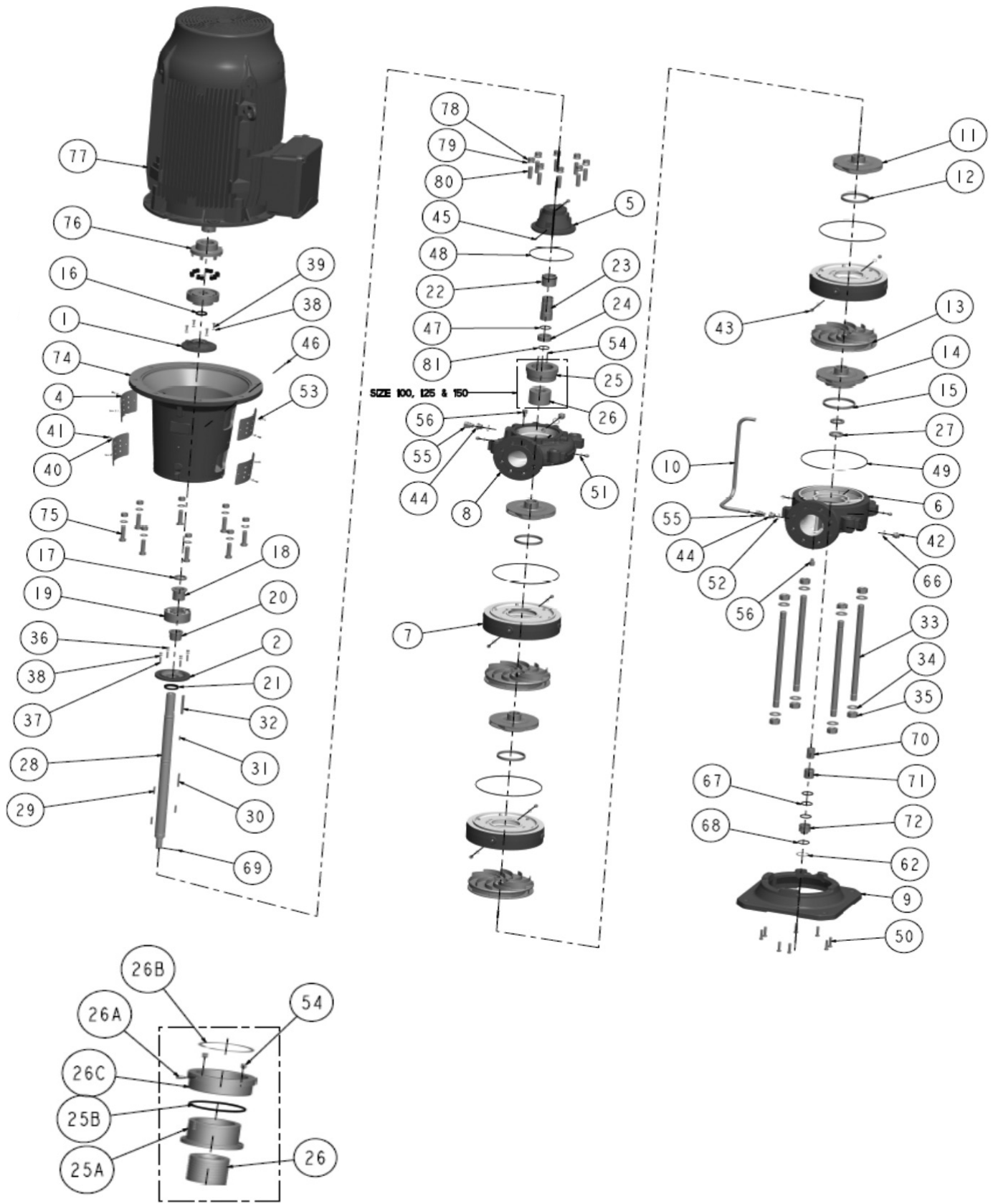


See Parts Index on page 8

e-MPR SIZE 50, 65, 100, 125 AND 150 - EXPLODED VIEW



e-MPV SIZE 50, 65, 100, 125 AND 150 - EXPLODED VIEW



Size 50 & 65

See Parts Index on page 8

EXPLODED VIEW INDEX

SERIAL NO.	PART	QTY
1	Bearing cover-motor	1
2	Bearing cover-pump	1
3	Bearing bracket	1
4	Shaft safety guard	2
5	Seal cover	1
6	Suction casing	1
7	Stage casing	(d)
8	Discharge casing	1
9	Pump foot	2
10	Balancing pipe	1
11	Impeller	(d)
12	Wear ring - stage casing	(b, d)
13	Diffuser	(d)
14	Impeller-suction	1
15	Wear ring-suction	1 (b)
16	V-ring - coupler side	1
17	Bearing nut,self-lock	1
18	Bearing sleeve	1
19	Ball bearing - discharge end	1
20	Spacer sleeve	1
21	V-ring - pump side	1
22	Mechanical seal	1
23	Shaft sleeve	1
24	Drum nut	1
25	Drum bushing	1
26	Drum	1 (c)
25A.	Drum bushing	1 (c)
25B.	O-ring, drum bushing	1 (c)
26A.	Set screw, drum	1 (c)
26B.	Retaining ring, drum	1 (c)
26C.	Drum body	1 (c)
27	Impeller nut	2
28	Shaft	1
29	Key, stage	(d)
30	Key, last stage	1
31	Key, shaft sleeve	1
32	Key, coupling	1
33	Tie bolt	4
34	Washer	8
35	Hexnut	8
36	Hexnut, bearing cover	4
37	Stud, bearing cover	4
38	Washer, bearing cover	8
39	Hexscrew, bearing cover	4
40	Washer, safety guard	(d)
41	Hexscrew, safety guard	(d)
42	Thread plug, drain	2
43	Thread plug, vent	(d)

SERIAL NO.	PART	QTY
44	Balancing pipe fitting_1	2
45	Grooved pin, seal cover	1
46	Grease nipple	1
47	O-ring, shaft sleeve	1
48	O-ring, seal cover	1
49	O-ring, stage	(d)
50	Hexscrew, pump foot	4
51	Gasket, vent	(d)
52	Gasket, balancing pipe	2
53	Lockwasher, shaft safety guard	(d)
54	Grub screw	2 (e)
55	Balancing pipe fitting_2	2
56	Adapter, PM adapter	1
57	Grub screw, suction casing	1
58	Hexnut, bearing bracket	8
59	Washer, bearing bracket	8
60	Stud, bearing bracket	8
61	Spacer sleeve	1
62	Circlip, bearing suction	1
63	Ball bearing-suction end	1
64	Bearing cover plug	1
65	Throttle, suction casing	1
66	Gasket, drain	2
67	O-ring, slide bearing bush	3
68	O-ring,slide bearing cover	1
69	Set screw	1
70	Slide bearing sleeve	1
71	Slide bearing bush	1
72	Slide bearing cover	1
73	Cap suction	1
74	Motor adapter	1
75	Hexscrew,motor adapter	8
76	Flexible coupling	1
77	Motor	1
78	Hexscrew, adapter	16
79	Washer, adapter	16
80	Stud, adapter	8
81	O-ring, drum	1

NOTES:

- For mechanical seal, cartridge and packing seals are options.
- Wear rings are standard only with stainless steel,duplex and super duplex. For cast iron and ductile casings, wear rings are optional.
- For drum, pump size 50 and 65 drum components include drum, drum bushing, drum body, retaining ring, o-ring & set screw.
- Quantity depends on pump configuration.
- #54 only for cast iron / ductile iron pumps.

e-MP50A/B PARTS LIST

SUCTION IMPELLER

ITEM NO.		e-MP50A	e-MP50B
14	Dia - Ø	6.65" (169)	6.81" (173)
	Cast Iron (C)	7C0154000	7C0154020
	Stainless Steel (N)	760186000	760186020
	Duplex (R)	760116000	760116020

STAGE IMPELLER

ITEM NO.		e-MP50A	e-MP50B
11	Dia - Ø	6.65" (169)	6.81" (173)
	Cast Iron (C)	7C0154010	7C0154030
	Stainless Steel (N)	760186010	760186030
	Duplex (R)	760116010	760116030

SHAFT SLEEVE

ITEM NO.		e-MP50A/e-MP50B			
		Unbalanced	Balanced	Packing	
		Mechanical Seal			
		Standard	Standard	Optional	
23	Casing (C, D)	Stainless Steel	763478000	763478050	763478100
	Pump (NNN/RNN)	Duplex	763418000	763418100	763418200
	Pump (RRR)	Duplex	763418000	763418100	-

PACKING

ITEM NO.		e-MP50A/e-MP50B			
		e-MPA	e-MPD	e-MPR	e-MPV
Optional	Typ-B 8x8	74A200040	2x 74A200040	74A200040	74A200040

WEAR RING FOR STAGE IMPELLER

ITEM NO.		e-MP50A/e-MP50B	
		e-MP50 / e-MPS50	
12	CCC/DCC	Stainless Steel	760913310
	CNC/DNC, NNN/RNN, RRR	Duplex	760913410

WEAR RING FOR SUCTION IMPELLER

ITEM NO.		e-MP50A/e-MP50B	
		e-MP50 / e-MPS50	
15	CCC/DCC	Stainless Steel	760913300
	CNC/DNC, NNN/RNN, RRR	Duplex	760913400

STAGE CASING

ITEM NO.		e-MP50A	e-MP50B
7	Ductile Iron (D)	74A101000	74A101000
	Stainless Steel (N)	74A101010	74A101010
	Duplex (R)	74A101020	74A101020

Material code information can be found in the nomenclature for casing, impeller and diffuser on page 3.

C = Cast Iron, D = Ductile Iron, N = Stainless Steel, R = Duplex, T = Super Duplex

e-MP50A/B PARTS LIST**DIFFUSER**

ITEM NO.		e-MP50A	e-MP50B
13	Cast Iron (C)	7C0252000	7C0252010
	Stainless Steel (N)	760282000	760282010
	Duplex (R)	760212000	760212010

DRUM

ITEM NO.		e-MP50A/e-MP50B	
26	Casing (C, D)	Stainless Steel	P7000122
	Pump (NNN/RNN)	Duplex	P7000126
	Pump (RRR)	Duplex	P7000126

FLOATING DRUM BUSH

ITEM NO.		e-MP50A/e-MP50B	
25	Casing (C, D)	Cast Iron (C)	765350100
	Pump (NNN/RNN)	Stainless Steel (N)	P7000110
	Pump (RRR)	Duplex (R)	P7000114

IMPELLER KEY LAST STAGE

ITEM NO.		e-MP50A/e-MP50B	
30	Casing (C, D)	Stainless Steel	772650413
	Pump (NNN/RNN)	Duplex	772650413
	Pump (RRR)	Duplex	772650565

IMPELLER KEY STAGE

ITEM NO.		e-MP50A/e-MP50B	
29	Casing (C, D)	Stainless Steel	772650323
	Pump (NNN/RNN)	Duplex	772650323
	Pump (RRR)	Duplex	772650503

IMPELLER NUT

ITEM NO.		e-MP50A/e-MP50B	
27	Casing (C, D)	Stainless Steel	762881000
	Pump (NNN/RNN)	Duplex	762881000
	Pump (RRR)	Duplex	762811050

Material code information can be found in the nomenclature for casing, impeller and diffuser on page 3.
 C = Cast Iron, D = Ductile Iron, N = Stainless Steel, R = Duplex, T = Super Duplex

e-MP50A/B PARTS LIST

ROLLER BEARING (INSIDE)

ITEM NO.		e-MP50A/e-MP50B			
		e-MPA	e-MPD	e-MPR	e-MPV
	Bearing set	74A500010	74A500020	74A500010	74A500010
17	Drive side	772310417	772310417	772310417	772310417
63	Suction side	–	772310225	–	–
19	Self-lock bearing nut	1x 772631307	2x 772631307	1x 772631307	1x 772631307
18	Bearing Sleeve	763970500	763970500	763970500	763970500

SLIDE BEARING

ITEM NO.			e-MP50A/e-MP50B			
			e-MPA	e-MPD	e-MPR	e-MPV
70, 71, 67	Bush, Sleeve, O-Rings	EPDM	74A200000	–	74A200010	74A200010
		FKM	74A200020	–	74A200030	74A200030

MECHANICAL SEAL

ITEM NO.			e-MP50A/e-MP50B	
			Unbalanced	Unbalanced - Duplex
			Casing Material C / D, N	Casing Material R
22	Diameter 38		EMG12 / ERMG12	MFL85N
	4 = Carbon/SiC/EPDM	<120°C	772241600	772240910
	2 = Carbon/SiC/FPM		772241612	772240962
	Z = SiC/SiC/EPDM		772241611	772240963
	W = SiC/SiC/FPM		772241610	772240964
	High Temp.	<140°C	772241613	–
			Balanced - Standard	Balanced - Duplex
			Casing Material C / D, N	Casing Material R
	Diameter 38		H75N	H75N
	4 = Carbon/SiC/EPDM	<120°C	772240652	772240656
	2 = Carbon/SiC/FPM		772240653	772240657
	Z = SiC/SiC/EPDM		772240654	772240658
	W = SiC/SiC/FPM		772240655	772240659
	High Temp.	<140°C	772240521	–

Material code information can be found in the nomenclature for casing, impeller and diffuser on page 3.

C = Cast Iron, D = Ductile Iron, N = Stainless Steel, R = Duplex, T = Super Duplex

KIT PART NUMBER e-MP50A/B

O-RING KIT (STANDARD)

ITEM NO.		e-MP50A/e-MP50B						
		1-stage	2-stages	3-stages	4-stages	5-stages	6-stages	
47 48 49 67 68	EPDM-WA, AFM34	e-MPA	74A300010	74A300020	74A300030	74A300040	74A300050	74A300060
		e-MPD	74A300190	74A300200	74A300210	74A300220	74A300230	74A300240
		e-MPR, e-MPV	74A300370	74A300380	74A300390	74A300400	74A300410	74A300420
			7-stages	8-stages	9-stages	10-stages	11-stages	12-stages
		e-MPA	74A300070	74A300080	74A300090	74A300100	74A300110	74A300120
		e-MPD	74A300250	74A300260	74A300270	74A300280	74A300290	74A300300
		e-MPR, e-MPV	74A300430	74A300440	74A300450	74A300460	74A300470	74A300480
			13-stages	14-stages	15-stages	16-stages	17-stage	18-stages
		e-MPA	74A300130	74A300140	74A300150	74A300160	74A300170	74A300180
		e-MPD	74A300310	74A300320	74A300330	74A300340	74A300350	74A300360
		e-MPR, e-MPV	74A300490	74A300500	74A300510	74A300520	74A300530	74A300540

O-RING KIT (OPTION FKM)

ITEM NO.		e-MP50A/e-MP50B						
		1-stage	2-stages	3-stages	4-stages	5-stages	6-stages	
47 48 49 67 68	FKM, AFM34	e-MPA	74A301010	74A301020	74A301030	74A301040	74A301050	74A301060
		e-MPD	74A301190	74A301200	74A301210	74A301220	74A301230	74A301240
		e-MPR, e-MPV	74A301370	74A301380	74A301390	74A301400	74A301410	74A301420
			7-stages	8-stages	9-stages	10-stages	11-stages	12-stages
		e-MPA	74A301070	74A301080	74A301090	74A301100	74A301110	74A301120
		e-MPD	74A301250	74A301260	74A301270	74A301280	74A301290	74A301300
		e-MPR, e-MPV	74A301430	74A301440	74A301450	74A301460	74A301470	74A301480
			13-stages	14-stages	15-stages	16-stages	17-stage	18-stages
		e-MPA	74A301130	74A301140	74A301150	74A301160	74A301170	74A301180
		e-MPD	74A301310	74A301320	74A301330	74A301340	74A301350	74A301360
		e-MPR, e-MPV	74A301490	74A301500	74A301510	74A301520	74A301530	74A301540

KIT PART NUMBER e-MP50A/B

SHAFT KIT

ITEM NO.			e-MP50A/e-MP50B					
			1-stage	2-stages	3-stages	4-stages	5-stages	6-stages
17 24 26A	Casing C,D	e-MPA, e-MPR, e-MPV	74A400010	74A400020	74A400030	74A400040	74A400050	74A400060
	Casing N		74A400410	74A400420	74A400430	74A400440	74A400450	74A400460
	Casing R		74A400810	74A400820	74A400830	74A400840	74A400850	74A400860
			7-stages	8-stages	9-stages	10-stages	11-stages	12-stages
27 28 29 30 31 32	Casing C,D	e-MPA, e-MPR, e-MPV	74A400070	74A400080	74A400090	74A400100	74A400110	74A400120
	Casing N		74A400470	74A400480	74A400490	74A400500	74A400510	74A400520
	Casing R		74A400870	74A400880	74A400890	74A400900	74A400910	74A400920
			13-stages	14-stages	15-stages	16-stages	17-stage	18-stages
	Casing C,D	e-MPA, e-MPR, e-MPV	74A400130	74A400140	74A400150	74A400160	74A400170	74A400180
	Casing N		74A400530	74A400540	74A400550	74A400560	74A400570	74A400580
	Casing R		74A400930	74A400940	74A400950	74A400960	74A400970	74A400980

SHAFT KIT

ITEM NO.			e-MP50A/e-MP50B					
			1-stage	2-stages	3-stages	4-stages	5-stages	6-stages
17 24 26A	Casing C,D	e-MPD	74A400210	74A400220	74A400230	74A400240	74A400250	74A400260
	Casing N		74A400610	74A400620	74A400630	74A400640	74A400650	74A400660
	Casing R		74A401010	74A401020	74A401030	74A401040	74A401050	74A401060
			7-stages	8-stages	9-stages	10-stages	11-stages	12-stages
27 28 29 30 31 32	Casing C,D	e-MPD	74A400270	74A400280	74A400290	74A400300	74A400310	74A400320
	Casing N		74A400670	74A400680	74A400690	74A400700	74A400710	74A400720
	Casing R		74A401070	74A401080	74A401090	74A401100	74A401110	74A401120
			13-stages	14-stages	15-stages	16-stages	17-stage	18-stages
	Casing C,D	e-MPD	74A400330	74A400340	74A400350	74A400360	74A400370	74A400380
	Casing N		74A400730	74A400740	74A400750	74A400760	74A400770	74A400780
	Casing R		74A401130	74A401140	74A401150	74A401160	74A401170	74A401180

DRUM KIT

ITEM NO.		e-MP50A/e-MP50B	
24	Casing C, D	1.4057/GG25	74A200050
25 26	Pump NNN/RNN	1.4462/1.4404	74A200060
54	Pump RRR	1.4462/1.4462	74A200070

Material code information can be found in the nomenclature for casing, impeller and diffuser on page 3.

C = Cast Iron, D = Ductile Iron, N = Stainless Steel, R = Duplex, T = Super Duplex

e-MP65A/B PARTS LIST

SUCTION IMPELLER

ITEM NO.		e-MP65A	e-MP65B
14	Dia - Ø	8.11" (206)	8.42" (214)
	Cast Iron (C)	7C0154040	7C0154060
	Stainless Steel (N)	760186040	760186060
	Duplex (R)	760116040	760116060

STAGE IMPELLER

ITEM NO.		e-MP65A	e-MP65B
11	Dia - Ø	8.11" (206)	8.42" (214)
	Cast Iron (C)	7C0154050	7C0154070
	Stainless Steel (N)	760186050	760186070
	Duplex (R)	760116050	760116070

SHAFT SLEEVE

ITEM NO.		e-MP65A/e-MP65B			
		Unbalanced	Balanced	Packing	
		Mechanical Seal			
		Standard	Standard	Optional	
23	Casing (C, D)	Stainless Steel	763478010	763478060	763478110
	Pump (NNN/RNN)	Duplex	763418010	763418110	763418210
	Pump (RRR)	Duplex	763418010	763418110	-

PACKING

ITEM NO.		e-MP65A/e-MP65B			
		e-MPA	e-MPD	e-MPR	e-MPV
Optional	Typ-B 10x10	74A200100	2x 74A200100	74A200100	74A200100

WEAR RING FOR STAGE IMPELLER

ITEM NO.		e-MP65A/e-MP65B	
		e-MP65 / e-MPS65	
12	CCC/DCC	Stainless Steel	760913330
	CNC/DNC, NNN/RNN, RRR	Duplex	760913430

WEAR RING FOR SUCTION IMPELLER

ITEM NO.		e-MP65A/e-MP65B	
		e-MP65S / e-MPS65S	
15	CCC/DCC	Stainless Steel	760913320
	CNC/DNC, NNN/RNN, RRR	Duplex	760913420

Material code information can be found in the nomenclature for casing, impeller and diffuser on page 3.

C = Cast Iron, D = Ductile Iron, N = Stainless Steel, R = Duplex, T = Super Duplex

e-MP65A/B PARTS LIST**DIFFUSER**

ITEM NO.		e-MP65A	e-MP65B
13	Cast Iron (C)	7C0252020	7C0252030
	Stainless Steel (N)	760282020	760282030
	Duplex (R)	760212020	760212030

DRUM

ITEM NO.		e-MP65A/e-MP65B	
26	Casing (C, D)	Stainless Steel	P7000123
	Pump (NNN/RNN)	Duplex	P7000127
	Pump (RRR)	Duplex	P7000127

FLOATING DRUM BUSH

ITEM NO.		e-MP65A/e-MP65B	
25	Casing (C, D)	Cast Iron (C)	765350110
	Pump (NNN/RNN)	Stainless Steel (N)	P7000111
	Pump (RRR)	Duplex (R)	P7000115

IMPELLER KEY LAST STAGE

ITEM NO.		e-MP65A/e-MP65B	
30	Casing (C, D)	Stainless Steel	772650353
	Pump (NNN/RNN)	Duplex	772650353
	Pump (RRR)	Duplex	772650568

IMPELLER KEY STAGE

ITEM NO.		e-MP65A/e-MP65B	
29	Casing (C, D)	Stainless Steel	772650347
	Pump (NNN/RNN)	Duplex	772650347
	Pump (RRR)	Duplex	772650566

IMPELLER NUT

ITEM NO.		e-MP65A/e-MP65B	
27	Casing (C, D)	Stainless Steel	762881010
	Pump (NNN/RNN)	Duplex	762881010
	Pump (RRR)	Duplex	762811060

Material code information can be found in the nomenclature for casing, impeller and diffuser on page 3.
 C = Cast Iron, D = Ductile Iron, N = Stainless Steel, R = Duplex, T = Super Duplex

e-MP65A/B PARTS LIST

ROLLER BEARING (INSIDE)

ITEM NO.		e-MP65A/e-MP65B			
		e-MPA	e-MPD	e-MPR	e-MPV
	Bearing set	74A500110	74A500120	74A500110	74A500110
17	Drive side	772310408	772310408	772310408	772310408
63	Suction side	–	772310235	–	–
19	Self-lock bearing nut	1x 772631350	2x 772631350	1x 772631350	1x 772631350
18	Bearing Sleeve	763970600	763970600	763970600	763970600

SLIDE BEARING

ITEM NO.			e-MP65A/e-MP65B			
			e-MPA	e-MPD	e-MPR	e-MPV
70, 71, 67	Bush, Sleeve, O-Rings	EPDM	74A200000	–	74A200010	74A200010
		FKM	74A200020	–	74A200030	74A200030

MECHANICAL SEAL

ITEM NO.			e-MP65A/e-MP65B	
			Unbalanced	Unbalanced - Duplex
			Casing Material C / D, N	Casing Material R
22	Diameter 43		EMG12 / ERMG12	MFL85N
	4 = Carbon/SiC/EPDM	<120°C	772241601	772240916
	2 = Carbon/SiC/FPM		772241615	772240917
	Z = SiC/SiC/EPDM		772241614	772240918
	W = SiC/SiC/FPM		772241609	772240915
	High Temp.	<140°C	772241616	–
			Balanced - Standard	Balanced - Duplex
			Casing Material C / D, N	Casing Material R
	Diameter 43		H75N	H75N
	4 = Carbon/SiC/EPDM	<120°C	772240530	772240543
	2 = Carbon/SiC/FPM		772240660	772240589
	Z = SiC/SiC/EPDM		772240535	772240661
	W = SiC/SiC/FPM		772240537	772240662
	High Temp.		<140°C	772240531

STAGE CASING

ITEM NO.		e-MP65A		e-MP65B	
		580 psi & 914 psi	1450 psi	580 psi & 914 psi	1450 psi
7	Ductile Iron (D)	74A101100	74A101130	74A101100	74A101130
	Stainless Steel (N)	74A101110		74A101110	
	Stainless Steel (RN)		74A101140		74A101140
	Duplex (R)	74A101120	74A101150	74A101120	74A101150

Material code information can be found in the nomenclature for casing, impeller and diffuser on page 3.

C = Cast Iron, D = Ductile Iron, N = Stainless Steel, R = Duplex, T = Super Duplex

KIT PART NUMBER e-MP65A/B

O-RING KIT (STANDARD)

ITEM NO.		e-MP65A/e-MP65B					
		1-stage	2-stages	3-stages	4-stages	5-stages	
47 48 49 67 68	EPDM-WA, AFM34	e-MPA	74A302010	74A302020	74A302030	74A302040	74A302050
		e-MPD	74A302170	74A302180	74A302190	74A302200	74A302210
		e-MPR, e-MPV	74A302330	74A302340	74A302350	74A302360	74A302370
			6-stages	7-stages	8-stages	9-stages	10-stages
		e-MPA	74A302060	74A302070	74A302080	74A302090	74A302100
		e-MPD	74A302220	74A302230	74A302240	74A302250	74A302260
		e-MPR, e-MPV	74A302380	74A302390	74A302400	74A302410	74A302420
			11-stages	12-stages	13-stages	14-stages	
		e-MPA	74A302110	74A302120	74A302130	74A302140	
		e-MPD	74A302270	74A302280	74A302290	74A302300	
		e-MPR, e-MPV	74A302430	74A302440	74A302450	74A302460	

O-RING KIT (OPTION FKM)

ITEM NO.		e-MP65A/e-MP65B					
		1-stage	2-stages	3-stages	4-stages	5-stages	
47 48 49 67 68	FKM, AFM34	e-MPA	74A303010	74A303020	74A303030	74A303040	74A303050
		e-MPD	74A303190	74A303200	74A303210	74A303220	74A303230
		e-MPR, e-MPV	74A303370	74A303380	74A303390	74A303400	74A303410
			6-stages	7-stages	8-stages	9-stages	10-stages
		e-MPA	74A303060	74A303070	74A303080	74A303090	74A303100
		e-MPD	74A303240	74A303250	74A303260	74A303270	74A303280
		e-MPR, e-MPV	74A303420	74A303430	74A303440	74A303450	74A303460
			11-stages	12-stages	13-stages	14-stages	
		e-MPA	74A303110	74A303120	74A303130	74A303140	
		e-MPD	74A303290	74A303300	74A303310	74A303320	
		e-MPR, e-MPV	74A303470	74A303480	74A303490	74A303500	

KIT PART NUMBER e-MP65A/B

SHAFT KIT

ITEM NO.			e-MP65A/e-MP65B				
			1-stage	2-stages	3-stages	4-stages	5-stages
17 24 26A	Casing C,D	e-MPA, e-MPR, e-MPV	74A402010	74A402020	74A402030	74A402040	74A402050
	Casing N		74A402410	74A402420	74A402430	74A402440	74A402450
	Casing R		74A402810	74A402820	74A402830	74A402840	74A402850
			6-stages	7-stages	8-stages	9-stages	10-stages
27 28 29 30	Casing C,D	e-MPA, e-MPR, e-MPV	74A402060	74A402070	74A402080	74A402090	74A402100
	Casing N		74A402460	74A402470	74A402480	74A402490	74A402500
	Casing R		74A402860	74A402870	74A402880	74A402890	74A402900
			11-stages	12-stages	13-stages	14-stages	
31 32	Casing C,D	e-MPA, e-MPR, e-MPV	74A402110	74A402120	74A402130	74A402140	
	Casing N		74A402510	74A402520	74A402530	74A402540	
	Casing R		74A402910	74A402920	74A402930	74A402940	

SHAFT KIT

ITEM NO.			e-MP65A/e-MP65B				
			1-stage	2-stages	3-stages	4-stages	5-stages
17 24 26A	Casing C,D	e-MPD	74A402210	74A402220	74A402230	74A402240	74A402250
	Casing N		74A402610	74A402620	74A402630	74A402640	74A402650
	Casing R		74A403010	74A403020	74A403030	74A403040	74A403050
			6-stages	7-stages	8-stages	9-stages	10-stages
27 28 29 30	Casing C,D	e-MPD	74A402260	74A402270	74A402280	74A402290	74A402300
	Casing N		74A402660	74A402670	74A402680	74A402690	74A402700
	Casing R		74A403060	74A403070	74A403080	74A403090	74A403100
			11-stages	12-stages	13-stages	14-stages	
31 32	Casing C,D	e-MPD	74A402310	74A402320	74A402330	74A402340	
	Casing N		74A402710	74A402720	74A402730	74A402740	
	Casing R		74A403110	74A403120	74A403130	74A403140	

DRUM KIT

ITEM NO.		e-MP65A/e-MP65B	
24	Casing C, D	1.4057/GG25	74A200120
25 26	Pump NNN/RNN	1.4462/1.4404	74A200130
54	Pump RRR	1.4462/1.4462	74A200140

Material code information can be found in the nomenclature for casing, impeller and diffuser on page 3.

C = Cast Iron, D = Ductile Iron, N = Stainless Steel, R = Duplex, T = Super Duplex

e-MP100A/B PARTS LIST

SUCTION IMPELLER

ITEM NO.		e-MP100A	e-MP100B
14	Dia - Ø	9.53" (242)	9.64" (245)
	Cast Iron (C)	7C0154080	7C0154100
	Stainless Steel (N)	760186080	760186100
	Duplex (R)	760116080	760116100

STAGE IMPELLER

ITEM NO.		e-MP100A	e-MP100B
11	Dia - Ø	9.53" (242)	9.64" (245)
	Cast Iron (C)	7C0154090	7C0154110
	Stainless Steel (N)	760186090	760186110
	Duplex (R)	760116090	760116110

SHAFT SLEEVE

ITEM NO.		e-MP100A/e-MP100B			
		Unbalanced	Balanced	Packing	
		Mechanical Seal			
		Standard	Standard	Optional	
23	Casing (C, D)	Stainless Steel	763478020	763478070	763478120
	Pump (NNN/RNN)	Duplex	763418020	763418120	763418220
	Pump (RRR)	Duplex	763418020	763418120	-

PACKING

ITEM NO.		e-MP100A/e-MP100B			
		e-MPA	e-MPD	e-MPR	e-MPV
Optional	Typ-B 10x10	74A200240	2x 74A200240	74A200240	74A200240

WEAR RING FOR STAGE IMPELLER

ITEM NO.		e-MP100A/e-MP100B	
		e-MP100 / e-MPS100	
12	CCC/DCC	Stainless Steel	760913350
	CNC/DNC, NNN/RNN, RRR	Duplex	760913450

WEAR RING FOR SUCTION IMPELLER

ITEM NO.		e-MP100A/e-MP100B	
		e-MP100 / e-MPS100	
15	CCC/DCC	Stainless Steel	760913340
	CNC/DNC, NNN/RNN, RRR	Duplex	760913440

Material code information can be found in the nomenclature for casing, impeller and diffuser on page 3.

C = Cast Iron, D = Ductile Iron, N = Stainless Steel, R = Duplex, T = Super Duplex

e-MP100A/B PARTS LIST**DIFFUSER**

ITEM NO.		e-MP100A	e-MP100B
13	Cast Iron (C)	7C0252040	7C0252050
	Stainless Steel (N)	760282040	760282050
	Duplex (R)	760212040	760212050

DRUM

ITEM NO.		e-MP100A/e-MP100B	
26	Casing (C, D)	Stainless Steel	P7000124
	Pump (NNN/RNN)	Duplex	P7000128
	Pump (RRR)	Duplex	P7000128

FLOATING DRUM BUSH

ITEM NO.		e-MP100A/e-MP100B	
25	Casing (C, D)	Cast Iron (C)	765350120
	Pump (NNN/RNN)	Stainless Steel (N)	P7000112
	Pump (RRR)	Duplex (R)	P7000116

IMPELLER KEY LAST STAGE

ITEM NO.		e-MP100A/e-MP100B	
30	Casing (C, D)	Stainless Steel	772650800
	Pump (NNN/RNN)	Duplex	772650800
	Pump (RRR)	Duplex	772650569

IMPELLER KEY STAGE

ITEM NO.		e-MP100A/e-MP100B	
29	Casing (C, D)	Stainless Steel	772650348
	Pump (NNN/RNN)	Duplex	772650348
	Pump (RRR)	Duplex	772650567

IMPELLER NUT

ITEM NO.		e-MP100A/e-MP100B	
27	Casing (C, D)	Stainless Steel	762881020
	Pump (NNN/RNN)	Duplex	762881020
	Pump (RRR)	Duplex	762811070

Material code information can be found in the nomenclature for casing, impeller and diffuser on page 3.
 C = Cast Iron, D = Ductile Iron, N = Stainless Steel, R = Duplex, T = Super Duplex

e-MP100A/B PARTS LIST

ROLLER BEARING (INSIDE)

ITEM NO.		e-MP100A/e-MP100B			
		e-MPA	e-MPD	e-MPR	e-MPV
	Bearing set	74A500210	74A500220	74A500210	74A500210
17	Drive side	772310457	772310457	772310457	772310457
63	Suction side	–	772310243	–	–
19	Self-lock bearing nut	1x 772631351	2x 772631351	1x 772631351	1x 772631351
18	Bearing Sleeve	763970700	763970700	763970700	763970700

SLIDE BEARING

ITEM NO.			e-MP100A/e-MP100B			
			e-MPA	e-MPD	e-MPR	e-MPV
70, 71, 67	Bush, Sleeve, O-Rings	EPDM	74A200200	–	74A200210	74A200210
		FKM	74A200220	–	74A200230	74A200230

MECHANICAL SEAL

ITEM NO.			e-MP100A/e-MP100B		
			Unbalanced	Unbalanced - Duplex	
			Casing Material C / D, N	Casing Material R	
			Diameter 55	EMG12 / ERMG12	MFL85N
22	4 = Carbon/SiC/EPDM	<120°C	772241603	772240938	
	2 = Carbon/SiC/FPM		772241617	772240965	
	Z = SiC/SiC/EPDM		772241608	772240939	
	W = SiC/SiC/FPM		772241607	772240966	
	High Temp.		<140°C	772241618	–
			Balanced - Standard	Balanced - Duplex	
			Casing Material C / D, N	Casing Material R	
			Diameter 55	H75N	H75N
	4 = Carbon/SiC/EPDM	<120°C	772240651	772240667	
	2 = Carbon/SiC/FPM		772240663	772240668	
	Z = SiC/SiC/EPDM		772240664	772240669	
	W = SiC/SiC/FPM		772240665	772240670	
	High Temp.		<140°C	772240666	–

STAGE CASING

ITEM NO.		e-MP100A		e-MP100B	
		580 psi & 914 psi	1450 psi	580 psi & 914 psi	1450 psi
7	Ductile Iron (D)	74A101200	74A101230	74A101200	74A101230
	Stainless Steel (N)	74A101210		74A101210	
	Stainless Steel (RN)		74A101240		74A101240
	Duplex (R)	74A101220	74A101250	74A101220	74A101250

Material code information can be found in the nomenclature for casing, impeller and diffuser on page 3.

C = Cast Iron, D = Ductile Iron, N = Stainless Steel, R = Duplex, T = Super Duplex

KIT PART NUMBER e-MP100A/B

O-RING KIT (STANDARD)

ITEM NO.		e-MP100A/e-MP100B					
		1-stage	2-stages	3-stages	4-stages		
47 48 49 67 68	EPDM-WA, AFM34	e-MPA	74A304010	74A304020	74A304030	74A304040	
		e-MPD	74A304120	74A304130	74A304140	74A304150	
		e-MPR, e-MPV	74A304230	74A304240	74A304250	74A304260	
			5-stages	6-stages	7-stages	8-stages	
		e-MPA	74A304050	74A304060	74A304070	74A304080	
		e-MPD	74A304160	74A304170	74A304180	74A304190	
		e-MPR, e-MPV	74A304270	74A304280	74A304290	74A304300	
			9-stages	10-stages	11-stages		
		e-MPA	74A304090	74A304100	74A304110		
		e-MPD	74A304200	74A304210	74A304220		
		e-MPR, e-MPV	74A304310	74A304320	74A304330		

O-RING KIT (OPTION FKM)

ITEM NO.		e-MP100A/e-MP100B					
		1-stage	2-stages	3-stages	4-stages		
47 48 49 67 68	FKM, AFM34	e-MPA	74A305010	74A305020	74A305030	74A305040	
		e-MPD	74A305120	74A305130	74A305140	74A305150	
		e-MPR, e-MPV	74A305230	74A305240	74A305250	74A305260	
			5-stages	6-stages	7-stages	8-stages	
		e-MPA	74A305050	74A305060	74A305070	74A305080	
		e-MPD	74A305160	74A305170	74A305180	74A305190	
		e-MPR, e-MPV	74A305270	74A305280	74A305290	74A305300	
			9-stages	10-stages	11-stages		
		e-MPA	74A305090	74A305100	74A305110		
		e-MPD	74A305200	74A305210	74A305220		
		e-MPR, e-MPV	74A305310	74A305320	74A305330		

KIT PART NUMBER e-MP100A/B

SHAFT KIT

ITEM NO.			e-MP100A/e-MP100B			
			1-stage	2-stages	3-stages	4-stages
17 24 26A	Casing C,D	e-MPA, e-MPR, e-MPV	74A404010	74A404020	74A404030	74A404040
	Casing N		74A404410	74A404420	74A404430	74A404440
	Casing R		74A404810	74A404820	74A404830	74A404840
			5-stages	6-stages	7-stages	8-stages
27 28 29 30 31 32	Casing C,D	e-MPA, e-MPR, e-MPV	74A404050	74A404060	74A404070	74A404080
	Casing N		74A404450	74A404460	74A404470	74A404480
	Casing R		74A404850	74A404860	74A404870	74A404880
			9-stages	10-stages	11-stages	
	Casing C,D	e-MPA, e-MPR, e-MPV	74A404090	74A404100	74A404110	
	Casing N		74A404490	74A404500	74A404510	
	Casing R		74A404890	74A404900	74A404910	

SHAFT KIT

ITEM NO.			e-MP100A/e-MP100B			
			1-stage	2-stages	3-stages	4-stages
17 24 26A	Casing C,D	e-MPD	74A404210	74A404220	74A404230	74A404240
	Casing N		74A404610	74A404620	74A404630	74A404640
	Casing R		74A405010	74A405020	74A405030	74A405040
			5-stages	6-stages	7-stages	8-stages
27 28 29 30 31 32	Casing C,D	e-MPD	74A404250	74A404260	74A404270	74A404280
	Casing N		74A404650	74A404660	74A404670	74A404680
	Casing R		74A405050	74A405060	74A405070	74A405080
			9-stages	10-stages	11-stages	
	Casing C,D	e-MPD	74A404290	74A404300	74A404310	
	Casing N		74A404690	74A404700	74A404710	
	Casing R		74A405090	74A405100	74A405110	

DRUM KIT

ITEM NO.		e-MP100A/e-MP100B	
24	Casing C, D	1.4057/GG25	74A200250
25 26	Pump NNN/RNN	1.4462/1.4404	74A200260
54	Pump RRR	1.4462/1.4462	74A200270

Material code information can be found in the nomenclature for casing, impeller and diffuser on page 3.

C = Cast Iron, D = Ductile Iron, N = Stainless Steel, R = Duplex, T = Super Duplex

e-MP125A/B PARTS LIST

SUCTION IMPELLER

ITEM NO.		e-MP125A	e-MP125B
14	Dia - Ø	11.14" (283)	11.61" (295)
	Cast Iron (C)	7C0154120	7C0154140
	Stainless Steel (N)	760186120	760186140
	Duplex (R)	760116120	760116140

STAGE IMPELLER

ITEM NO.		e-MP125A	e-MP125B
11	Dia - Ø	11.14" (283)	11.61" (295)
	Cast Iron (C)	7C0154130	7C0154150
	Stainless Steel (N)	760186130	760186150
	Duplex (R)	760116130	760116150

SHAFT SLEEVE

ITEM NO.		e-MP125A/e-MP125B			
		Unbalanced	Balanced	Packing	
		Mechanical Seal			
		Standard	Standard	Optional	
23	Casing (C, D)	Stainless Steel	763478030	763478080	763478130
	Pump (NNN/RNN)	Duplex	763418030	763418130	763418230
	Pump (RRR)	Duplex	763418030	763418130	-

PACKING

ITEM NO.		e-MP125A/e-MP125B			
		e-MPA	e-MPD	e-MPR	e-MPV
Optional	Typ-B 10x10	74A200340	2x 74A200340	74A200340	74A200340

WEAR RING FOR STAGE IMPELLER

ITEM NO.		e-MP125A/e-MP125B	
		e-MP125 / e-MPS125	
12	CCC/DCC	Stainless Steel	760913370
	CNC/DNC, NNN/RNN, RRR	Duplex	760913470

WEAR RING FOR SUCTION IMPELLER

ITEM NO.		e-MP125A/e-MP125B	
		e-MP125 / e-MPS125	
15	CCC/DCC	Stainless Steel	760913360
	CNC/DNC, NNN/RNN, RRR	Duplex	760913460

Material code information can be found in the nomenclature for casing, impeller and diffuser on page 3.
 C = Cast Iron, D = Ductile Iron, N = Stainless Steel, R = Duplex, T = Super Duplex

e-MP125A/B PARTS LIST**DIFFUSER**

ITEM NO.		e-MP125A	e-MP125B
		EMPC125 / EMPS125	EMPC125 / EMPS125
13	Cast Iron (C)	7C0252060	7C0252070
	Stainless Steel (N)	760282060	760282070
	Duplex (R)	760212060	760212070

DRUM

ITEM NO.		e-MP125A/e-MP125B	
26	Casing (C, D)	Stainless Steel	P7000125
	Pump (NNN/RNN)	Duplex	P7000129
	Pump (RRR)	Duplex	P7000129

FLOATING DRUM BUSH

ITEM NO.		e-MP125A/e-MP125B	
25	Casing (C, D)	Cast Iron (C)	765350130
	Pump (NNN/RNN)	Stainless Steel (N)	P7000113
	Pump (RRR)	Duplex (R)	P7000117

IMPELLER KEY LAST STAGE

ITEM NO.		e-MP125A/e-MP125B	
30	Casing (C, D)	Stainless Steel	772650368
	Pump (NNN/RNN)	Duplex	772650368
	Pump (RRR)	Duplex	772650570

IMPELLER KEY STAGE

ITEM NO.		e-MP125A/e-MP125B	
29	Casing (C, D)	Stainless Steel	772650374
	Pump (NNN/RNN)	Duplex	772650374
	Pump (RRR)	Duplex	772650514

IMPELLER NUT

ITEM NO.		e-MP125A/e-MP125B	
27	Casing (C, D)	Stainless Steel	762881030
	Pump (NNN/RNN)	Duplex	762881030
	Pump (RRR)	Duplex	762811080

Material code information can be found in the nomenclature for casing, impeller and diffuser on page 3.
 C = Cast Iron, D = Ductile Iron, N = Stainless Steel, R = Duplex, T = Super Duplex

e-MP125A/B PARTS LIST

ROLLER BEARING (INSIDE)

ITEM NO.		e-MP125A/e-MP125B			
		e-MPA	e-MPD	e-MPR	e-MPV
	Bearing set	74A500310	74A500320	74A500310	74A500310
17	Drive side	772310411	772310411	772310411	772310411
63	Suction side	–	772310247	–	–
19	Self-lock bearing nut	1x 772631312	2x 772631312	1x 772631312	1x 772631312
18	Bearing Sleeve	763970800	763970800	763970800	763970800

SLIDE BEARING

ITEM NO.			e-MP125A/e-MP125B			
			e-MPA	e-MPD	e-MPR	e-MPV
70, 71, 67	Bush, Sleeve, O-Rings	EPDM	74A200300	–	74A200310	74A200310
		FKM	74A200320	–	74A200330	74A200330

MECHANICAL SEAL

ITEM NO.			e-MP125A/e-MP125B		
			Unbalanced	Unbalanced - Duplex	
			Casing Material C / D, N	Casing Material R	
			Diameter 65	EMG12 / ERMG12	MFL85N
22	4 = Carbon/SiC/EPDM	<120°C	772241604	772240931	
	2 = Carbon/SiC/FPM		772241620	772240933	
	Z = SiC/SiC/EPDM		772241619	772240946	
	W = SiC/SiC/FPM		772241621	772240935	
	High Temp.		<140°C	772241622	–
			Balanced - Standard	Balanced - Duplex	
			Casing Material C / D, N	Casing Material R	
			Diameter 65	H75N	H75N
	4 = Carbon/SiC/EPDM	<120°C	772240649	772240675	
	2 = Carbon/SiC/FPM		772240671	772240637	
	Z = SiC/SiC/EPDM		772240672	772240676	
	W = SiC/SiC/FPM		772240673	772240677	
	High Temp.		<140°C	772240674	–

STAGE CASING

ITEM NO.		e-MP125A		e-MP125B	
		580 psi & 914 psi	1450 psi	580 psi & 914 psi	1450 psi
7	Cast Iron (C)	74A101300		74A101300	
	Ductile Iron (D)	74A101310	74A101340	74A101310	74A101340
	Stainless Steel (N)	74A101320		74A101320	
	Stainless Steel (RN)		74A101350		74A101350
	Duplex (R)	74A101330	74A101360	74A101330	74A101360

Material code information can be found in the nomenclature for casing, impeller and diffuser on page 3.

C = Cast Iron, D = Ductile Iron, N = Stainless Steel, R = Duplex, T = Super Duplex

KIT PART NUMBER e-MP125A/B

O-RING KIT (STANDARD)

ITEM NO.		e-MP125A/e-MP125B				
		1-stage	2-stages	3-stages	4-stages	
47 48 49 67 68	EPDM-WA, AFM34	e-MPA	74A306010	74A306020	74A306030	74A306040
		e-MPD	74A306110	74A306120	74A306130	74A306140
		e-MPR, e-MPV	74A306210	74A306220	74A306230	74A306240
			5-stages	6-stages	7-stages	8-stages
		e-MPA	74A306050	74A306060	74A306070	74A306080
		e-MPD	74A306150	74A306160	74A306170	74A306180
		e-MPR, e-MPV	74A306250	74A306260	74A306270	74A306280

O-RING KIT (OPTION FKM)

ITEM NO.		e-MP125A/e-MP125B				
		1-stage	2-stages	3-stages	4-stages	
47 48 49 67 68	FKM, AFM34	e-MPA	74A307010	74A307020	74A307030	74A307040
		e-MPD	74A307110	74A307120	74A307130	74A307140
		e-MPR, e-MPV	74A307210	74A307220	74A307230	74A307240
			5-stages	6-stages	7-stages	8-stages
		e-MPA	74A307050	74A307060	74A307070	74A307080
		e-MPD	74A307150	74A307160	74A307170	74A307180
		e-MPR, e-MPV	74A307250	74A307260	74A307270	74A307280

SHAFT KIT

ITEM NO.			e-MP125A/e-MP125B				
			1-stage	2-stages	3-stages	4-stages	
17 24 26A 27 28 29 30 31 32	Casing C,D Casing N Casing R	e-MPA, e-MPR, e-MPV	74A406010	74A406020	74A406030	74A406040	
			74A406410	74A406420	74A406430	74A406440	
			74A406810	74A406820	74A406830	74A406840	
				5-stages	6-stages	7-stages	8-stages
	Casing C,D Casing N Casing R	e-MPA, e-MPR, e-MPV	74A406050	74A406060	74A406070	74A406080	
			74A406450	74A406460	74A406470	74A406480	
			74A406850	74A406860	74A406870	74A406880	

SHAFT KIT

ITEM NO.			e-MP125A/e-MP125B				
			1-stage	2-stages	3-stages	4-stages	
17 24 26A 27 28 29 30 31 32	Casing C,D Casing N Casing R	e-MPD	74A406210	74A406220	74A406230	74A406240	
			74A406610	74A406620	74A406630	74A406640	
			74A407010	74A407020	74A407030	74A407040	
				5-stages	6-stages	7-stages	8-stages
	Casing C,D Casing N Casing R	e-MPD	74A406250	74A406260	74A406270	74A406280	
			74A406650	74A406660	74A406670	74A406680	
			74A407050	74A407060	74A407070	74A407080	

DRUM KIT

ITEM NO.		e-MP125A/e-MP125B	
24	Casing C, D	1.4057/GG25	74A200350
25	Pump NNN/RNN	1.4462/1.4404	74A200360
26			
54	Pump RRR	1.4462/1.4462	74A200370

Material code information can be found in the nomenclature for casing, impeller and diffuser on page 3.

C = Cast Iron, D = Ductile Iron,
N = Stainless Steel, R = Duplex,
T = Super Duplex

e-MP150A/B PARTS LIST

SUCTION IMPELLER

ITEM NO.		e-MP150A	e-MP150B
14	Dia - Ø	13.15" (334)	13.50" (343)
	Stainless Steel (N)	760186160	760186180
	Duplex (R)	760116160	760116180

STAGE IMPELLER

ITEM NO.		e-MP150A	e-MP150B
11	Dia - Ø	13.15" (334)	13.50" (343)
	Stainless Steel (N)	760186170	760186190
	Duplex (R)	760116170	760116190

SHAFT SLEEVE

ITEM NO.		e-MP150A/e-MP150B			
		Unbalanced	Balanced	Packing	
		Mechanical Seal			
		Standard	Standard	Optional	
23	Casing (C, D)	Stainless Steel	763478040	763478090	763478140
	Pump (NNN/RNN)	Duplex	763418040	763418140	763418240
	Pump (RRR)	Duplex	763418040	763418140	---

PACKING

ITEM NO.		e-MP100A/e-MP100B			
		e-MPA	e-MPD	e-MPR	e-MPV
Optional	Typ-B 12x12	74A200440	2x 74A200440	74A200440	74A200440

WEAR RING FOR STAGE IMPELLER

ITEM NO.		e-MP150A/e-MP150B	
		e-MPS150	
12	DNC, RNN, RRR	Duplex	760913490

WEAR RING FOR SUCTION IMPELLER

ITEM NO.		e-MP150A/e-MP150B	
		e-MPS150	
15	DNC, RNN, RRR	Duplex	760913480

STAGE CASING

ITEM NO.		e-MP150A		e-MP150B	
		580 psi & 914 psi	1450 psi	580 psi & 914 psi	1450 psi
7	Ductile Iron (D)	74A101400		74A101400	
	Ductile Iron (D)		74A101430		74A101430
	Stainless Steel (RN)	74A101410	74A101440	74A101410	74A101440
	Duplex (R)	74A101420	74A101450	74A101420	74A101450

Material code information can be found in the nomenclature for casing, impeller and diffuser on page 3.

C = Cast Iron, D = Ductile Iron, N = Stainless Steel, R = Duplex, T = Super Duplex

e-MP150A/B PARTS LIST**DRUM**

ITEM NO.		e-MP150A/e-MP150B		
			1 - 2 stages	3 - 6 stages
26	Casing (D)	Stainless Steel	765270140	76527014A
	Pump (RNN)	Duplex	765210140	76521014A
	Pump (RRR)	Duplex	765210140	76521014A

FLOATING DRUM BUSH

ITEM NO.		e-MP150A/e-MP150B		
			1 - 2 stages	3 - 6 stages
25	Casing (D)	Cast Iron (C)	76535014A	765350140
	Pump (RNN)	Stainless Steel (N)	76538004A	765380040
	Pump (RRR)	Duplex (R)	76531023A	765310230

DIFFUSER

ITEM NO.		e-MP150A	e-MP150B
13	Cast Iron (C)	7C0252080	7C0252090
	Stainless Steel (N)	760282080	760282090
	Duplex (R)	760212080	760212090

IMPELLER KEY LAST STAGE

ITEM NO.		e-MP150A/e-MP150B	
30	Casing (C, D)	Stainless Steel	772650389
	Pump (NNN/RNN)	Duplex	772650389
	Pump (RRR)	Duplex	

IMPELLER KEY STAGE

ITEM NO.		e-MP150A/e-MP150B	
29	Casing (C, D)	Stainless Steel	772650393
	Pump (NNN/RNN)	Duplex	772650393
	Pump (RRR)	Duplex	

IMPELLER NUT

ITEM NO.		e-MP150A/e-MP150B	
27	Casing (C, D)	Stainless Steel	762881040
	Pump (NNN/RNN)	Duplex	762881040
	Pump (RRR)	Duplex	762811090

Material code information can be found in the nomenclature for casing, impeller and diffuser on page 3.
 C = Cast Iron, D = Ductile Iron, N = Stainless Steel, R = Duplex, T = Super Duplex

e-MP150A/B PARTS LIST

ROLLER BEARING (INSIDE)

ITEM NO.		e-MP150A/e-MP150B			
		e-MPA	e-MPD	e-MPR	e-MPV
	Bearing set	74A500410	74A500420	74A500410	74A500410
17	Drive side	772310458	772310458	772310458	772310458
63	Suction side	–	772310253	–	–
19	Self-lock bearing nut	1x 772631314	2x 772631314	1x 772631314	1x 772631314
18	Bearing Sleeve	763970900	763970900	763970900	763970900

SLIDE BEARING

ITEM NO.			e-MP150A/e-MP150B			
			e-MPA	e-MPD	e-MPR	e-MPV
70, 71, 67	Bush, Sleeve, O-Rings	EPDM	74A200300	–	74A200310	74A200310
		FKM	74A200320	–	74A200330	74A200330

MECHANICAL SEAL

ITEM NO.			e-MP150A/e-MP150B	
			Balanced - Standard	Balanced - Duplex
			Casing Material C / D, N	Casing Material R
			Diameter 75	H75N
22	4 = Carbon/SiC/EPDM	<120°C	772240641	772240645
	2 = Carbon/SiC/FPM		772240642	772240679
	Z = SiC/SiC/EPDM		772240643	772240646
	W = SiC/SiC/FPM		772240644	772240680
	High Temp.		<140°C	772240678

Material code information can be found in the nomenclature for casing, impeller and diffuser on page 3.
 C = Cast Iron, D = Ductile Iron, N = Stainless Steel, R = Duplex, T = Super Duplex

KIT PART NUMBER e-MP150A/B

O-RING KIT (STANDARD)

ITEM NO.			e-MP150A/e-MP150B		
			1-stage	2-stages	3-stages
47 48 49 67 68	EPDM-WA, AFM34	e-MPA	74A308010	74A308020	74A308030
		e-MPD	74A308110	74A308120	74A308130
		e-MPR, e-MPV	74A308210	74A308220	74A308230
			4-stages	5-stages	6-stages
		e-MPA	74A308040	74A308050	74A308060
		e-MPD	74A308140	74A308150	74A308160
		e-MPR, e-MPV	74A308240	74A308250	74A308260

O-RING KIT (OPTION FKM)

ITEM NO.			e-MP150A/e-MP150B		
			1-stage	2-stages	3-stages
47 48 49 67 68	FKM, AFM34	e-MPA	74A308510	74A308520	74A308530
		e-MPD	74A308610	74A308620	74A308630
		e-MPR, e-MPV	74A308710	74A308720	74A308730
			4-stages	5-stages	6-stages
		e-MPA	74A308540	74A308550	74A308560
		e-MPD	74A308640	74A308650	74A308660
		e-MPR, e-MPV	74A308740	74A308750	74A308760

SHAFT KIT

ITEM NO.			e-MP150A/e-MP150B		
			1-stage	2-stages	3-stages
17 24 26A 27 28 29 30 31 32	Casing C,D Casing N Casing R	e-MPA, e-MPR, e-MPV	74A408010	74A408020	74A408030
			74A408210	74A408220	74A408230
			74A408410	74A408420	74A408430
			4-stages	5-stages	6-stages
	Casing C,D Casing N Casing R	e-MPA, e-MPR, e-MPV	74A408040	74A408050	74A408060
			74A408240	74A408250	74A408260
			74A408440	74A408450	74A408460

SHAFT KIT

ITEM NO.			e-MP150A/e-MP150B		
			1-stage	2-stages	3-stages
17 24 26A 27 28 29 30 31 32	Casing C,D Casing N Casing R	e-MPD	74A408110	74A408120	74A408130
			74A408310	74A408320	74A408330
			74A408510	74A408520	74A408530
			4-stages	5-stages	6-stages
	Casing C,D Casing N Casing R	e-MPD	74A408140	74A408150	74A408160
			74A408340	74A408350	74A408360
			74A408540	74A408550	74A408560

DRUM KIT

ITEM NO.			e-MP150A/e-MP150B	
			1 - 2 stages	3 - 6 stages
24	Casing D	1.4057/GG25	74A200480	74A200450
25	Pump RNN	1.4462/1.4404	74A200490	74A200460
26				
54	Pump RRR	1.4462/1.4462	74A200500	74A200470

Material code information can be found in the nomenclature for casing, impeller and diffuser on page 3.

C = Cast Iron, D = Ductile Iron,
N = Stainless Steel, R = Duplex,
T = Super Duplex

VERTICAL COUPLING

Pump Size	HP		Pump Hub	Element	Motor Hub						
	3600 RPM	1800 RPM			182TD/184TD	213TD/215TD	254TD/256TD	284TSD/286TSD	284TD/286TD	324TSD/326TSD	324TD/326TD
50	30	15	P7000020	P2000264			P2000309	P2000309			
	50	25	P7000022	P2000267					P2000317	P2000317	
	75	40	P7000024	P2000270					P2000325		P2000326
	100	50	P7000027	P7000056					P7000045	P7000044	P7000044
	125	60	P7000030	P2000273						P2000334	P2000334
	200	100	P7000033	P2000276						P2000343	P2000343
	300	150									
	400	200									
	700	350									
65	30	15	P7000021	P2000264			P2000309	P2000309			
	50	25	P7000023	P2000267					P2000317	P2000317	
	75	40	P7000025	P2000270					P2000325		P2000326
	100	50	P7000028	P7000056					P7000045	P7000044	P7000044
	125	60	P7000031	P2000273						P2000334	P2000334
	200	100	P7000034	P2000276						P2000343	P2000343
	300	150									
	400	200									
	700	350									
100	30	15									
	50	25									
	75	40	P7000026	P2000270					P2000325		P2000326
	100	50	P7000029	P7000056					P7000045	P7000044	P7000044
	125	60	P7000032	P2000273						P2000334	P2000334
	200	100	P7000035	P2000276						P2000343	P2000343
	300	150	P7000037	P2000279							
	400	200	P7000038	P2000282							
	700	350									
125	30	15									
	50	25									
	75	40	P7000101	P2000270					P2000325		P2000326
	100	50									
	125	60									
	200	100	P7000036	P2000276						P2000343	P2000343
	300	150									
	400	200	P7000039	P2000282							
	700	350	P7000040	P2000285							
150	30	15									
	50	25									
	75	40									
	100	50									
	125	60									
	200	100									
	300	150									
	400	200									
	700	350									

VERTICAL COUPLING

Pump Size	HP		Motor Hub							
	3600 RPM	1800 RPM	364TSD/365TSD	364TD/365TD	404TSD/405TSD	404TD/405TD	444TSD/445TSD	444TD/445TD	447TSD/449TSD	447TD/449TD
50	30	15								
	50	25	P2000317							
	75	40	P2000325							
	100	50	P7000045		P7000044					
	125	60		P2000335	P2000334		P2000335			
	200	100		P2000344	P2000343		P2000344		P2000335	
	300	150								
	400	200								
	700	350								
65	30	15								
	50	25	P2000317							
	75	40	P2000325							
	100	50	P7000045		P7000044					
	125	60		P2000335	P2000334		P2000335			
	200	100		P2000344	P2000343		P2000344		P2000335	
	300	150								
	400	200								
	700	350								
100	30	15								
	50	25								
	75	40	P2000325							
	100	50	P7000045		P7000044					
	125	60		P2000335	P2000334		P2000335			
	200	100		P2000344	P2000343		P2000344		P2000335	
	300	150		P2000355			P2000355		P2000355	
	400	200		P2000366			P2000366		P2000366	
	700	350								
125	30	15								
	50	25								
	75	40	P2000325							
	100	50								
	125	60								
	200	100		P2000344	P2000343		P2000344		P2000335	
	300	150								
	400	200		P2000366			P2000366		P2000366	
	700	350		P2000378			P2000378		P2000378	
150	30	15								
	50	25								
	75	40								
	100	50								
	125	60								
	200	100								
	300	150								
	400	200								
	700	350								

HORIZONTAL COUPLING

Pump Size	HP		Pump Hub	Motor Hub						
	3600 RPM	1800 RPM		182TD/184TD	213TD/215TD	254TD/256TD	284TSD/286TSD	284TD/286TD	324TSD/326TSD	324TD/326TD
50	50	25	P7000062	P7000090	P7000079	P7000081	P7000081			
	75	40								
	100	50	P7000065			P7000080	P7000080	P7000078	P7000078	P7000084
	150	75	P7000068							P7000085
	250	125	P7000071							
	400	200								
	600	300								
	1000	600								
65	50	25	P7000063	P7000090	P7000079	P7000081	P7000081			
	75	40								
	100	50	P7000066			P7000080	P7000080	P7000078	P7000078	P7000084
	150	75	P7000069							P7000085
	250	125	P7000072							
	400	200	P7000074							
	600	300								
	1000	600								
100	50	25								
	75	40	P7000064		P7000082	P7000083	P7000083			
	100	50	P7000067			P7000080	P7000080	P7000078	P7000078	P7000084
	150	75	P7000070							P7000085
	250	125	P7000073							
	400	200	P7000075							
	600	300	P7000076							
	1000	600								
125	50	25								
	75	40								
	100	50								
	150	75								
	250	125								
	400	200								
	600	300								
	1000	600								
150	50	25								
	75	40								
	100	50								
	150	75								
	250	125								
	400	200								
	600	300								
	1000	600								

HORIZONTAL COUPLING

Pump Size	HP		Motor Hub							
	3600 RPM	1800 RPM	364TSD/365TSD	364TD/365TD	404TSD/405TSD	404TD/405TD	444TSD/445TSD	444TD/445TD	447TSD/449TSD	447TD/449TD
50	50	25								
	75	40								
	100	50			P7000084					
	150	75			P7000085					
	250	125		P7000086			P7000086		P7000086	
	400	200								
	600	300								
	1000	600								
65	50	25								
	75	40								
	100	50								
	150	75			P7000085					
	250	125		P7000086			P7000086		P7000086	
	400	200								
	600	300								
	1000	600								
100	50	25								
	75	40								
	100	50								
	150	75			P7000085					
	250	125		P7000086			P7000086		P7000086	
	400	200		P7000087		P7000088	P7000087		P7000087	
	600	300		P7000089			P7000089		P7000089	
	1000	600								
125	50	25								
	75	40								
	100	50								
	150	75								
	250	125								
	400	200								
	600	300								
	1000	600								
150	50	25								
	75	40								
	100	50								
	150	75								
	250	125								
	400	200								
	600	300								
	1000	600								

Xylem |'zīləm|

- 1) The tissue in plants that brings water upward from the roots;
- 2) a leading global water technology company.

We're a global team unified in a common purpose: creating advanced technology solutions to the world's water challenges. Developing new technologies that will improve the way water is used, conserved, and re-used in the future is central to our work. Our products and services move, treat, analyze, monitor and return water to the environment, in public utility, industrial, residential and commercial building services settings. Xylem also provides a leading portfolio of smart metering, network technologies and advanced analytics solutions for water, electric and gas utilities. In more than 150 countries, we have strong, long-standing relationships with customers who know us for our powerful combination of leading product brands and applications expertise with a strong focus on developing comprehensive, sustainable solutions.

For more information on how Xylem can help you, go to www.xylem.com



Xylem Inc.
xylem.com

All other trademarks or registered trademarks are property of their respective owners.

© 2020 Xylem Inc. eMP-PL June 2020