

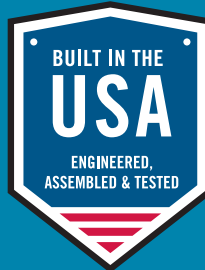
xylem
Let's Solve Water



AGS Series

Axial Grinder Pumps & Packages

POWERFUL PERFORMANCE FOR THE
MODERN WASTEWATER STREAM



GOULDS
WATER TECHNOLOGY
a xylem brand

BRAGSSERIES R3

Based on technology developed and tested in the toughest wastewater environments, count on the AGS Series axial grinder pumps to handle the challenging demands of today's residential wastewater.

The AGS Series grinder pumps feature a powerful axial grinder and semi-open impeller technology to easily slice through the solids, flushables and trash found in the modern wastewater stream without roping or clogging. This technology reduces waste to a fine slurry, resulting in minimal downtime and service issues. The AGS Series axial grinder pumps available through Goulds Water Technology offer proven solutions for a range of residential applications.

APPLICATIONS

- 2" Sewage pump replacement (.5 hp & 1 hp)
- Residential and small office new construction (wastewater)
- Applications where modern wastewater flushables are creating clogging issues

ADVANTAGES

Proven design: The axial grinder and semi-open impeller technology reduce downtime caused by clogging or roping.

Broad range of solutions: Available in single phase. 5 hp (115V or 208-230V), 1 hp (115V or 208-230V) and 2 hp (208-230V) options.

Trusted performance: Models deliver up to 120' TDH and flow rates of 53 gpm.

Ease of installation: Fixed balanced attachment to help simplify installation.

Built to last: Stainless steel (440C), cutter/plate style configuration and oil cooled motor. Cast iron impeller.

Continuous operation: Pump ratings are within the motor manufacturer's recommended working limits and can be operated continuously without damage when fully submerged. Single phase, built-in, auto reset overload (Class F insulation) on all models.

Warranty: Three (3) years. Backed by Goulds Water Technology service and support.



Built to Perform

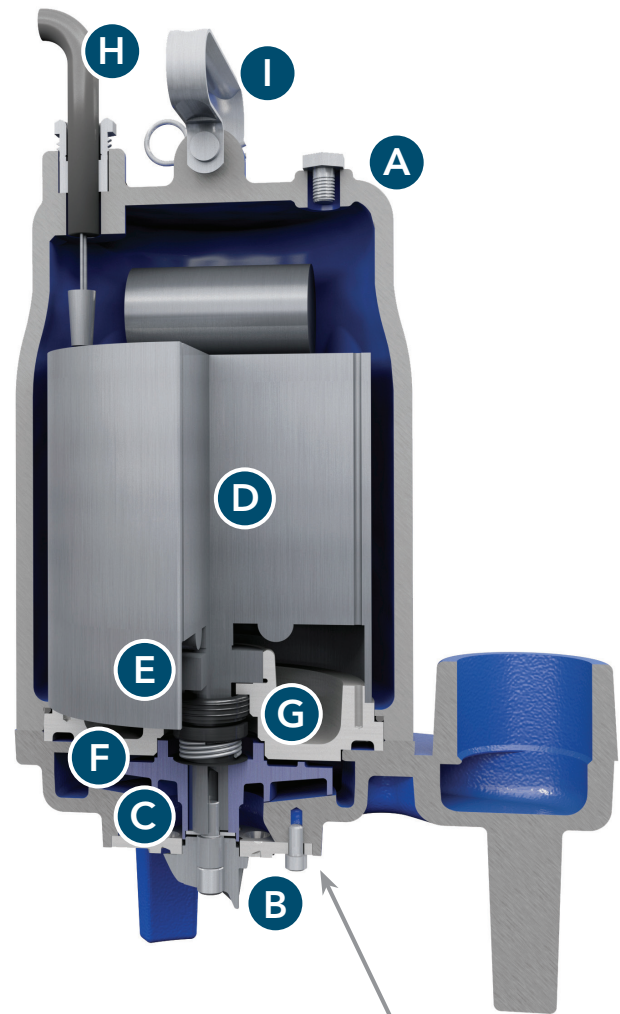
FEATURES

- A. Casing:** One piece, uni-body cast iron, volute type for high efficiency.
- B. Axial grinder:** Stainless steel, eight (8) hole cutter plate, three (3) blade cutter generating up to 4.9 million bites per hour (up to 120' TDH).
- C. Semi-open impeller:** Powerful, non-clogging, cast iron design. Balanced for smooth operation.
- D. Motor:** Oil-cooled/fully submerged in high grade turbine oil for more efficient heat dissipation, permanent lubrication of bearings and mechanical seal, and protection against outside environment.
- E. Motor shaft:** AISI 300 series stainless steel.
- F. Bearing housing/bearings:** Upper and lower ball bearings for precision positioning of parts and to carry all radial and thrust loads.
- G. Mechanical seal:** Hardfaced silicon carbide on silicon carbide for longer life, stainless steel metal parts, BUNA-N elastomers (standard feature).
- H. Power cord:** Severe duty rated, oil and water resistant 20 foot cord. SJTOW power cord with NEMA three prong grounding plug.
- I. Fixed balanced handle:** For ease of installation.

Axial Grinder Technology: Stainless steel, non-clogging design. Generates up to 4.9 million bites per hour (up to 120' TDH).

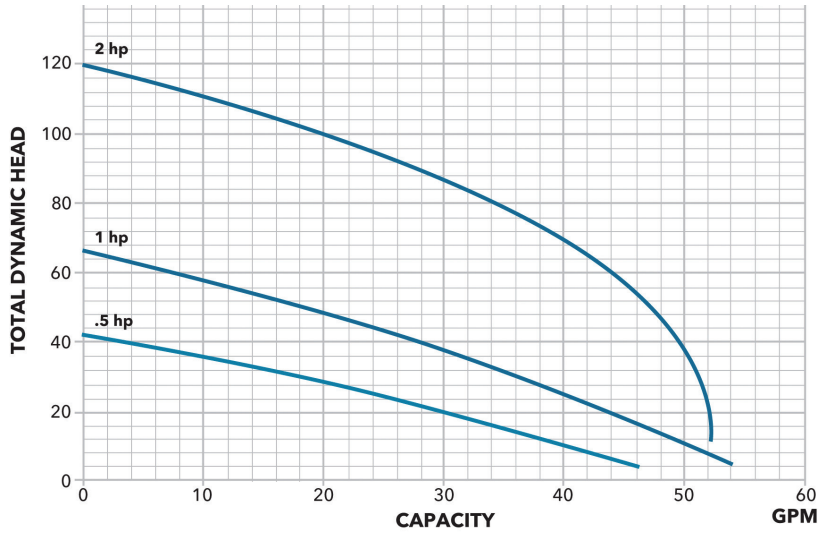
J. Eight (8) hole cutter plate.

K. Three (3) blade cutter with advanced design features to provide superior performance.



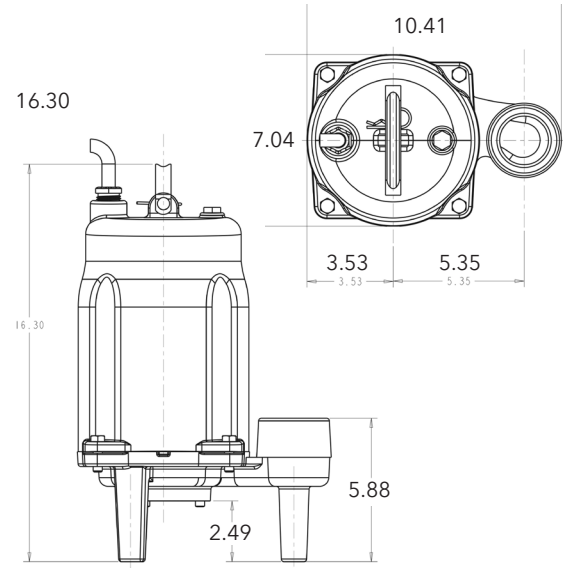
AGS Series Axial Grinder Pumps

PERFORMANCE CURVE



DIMENSIONAL DRAWINGS

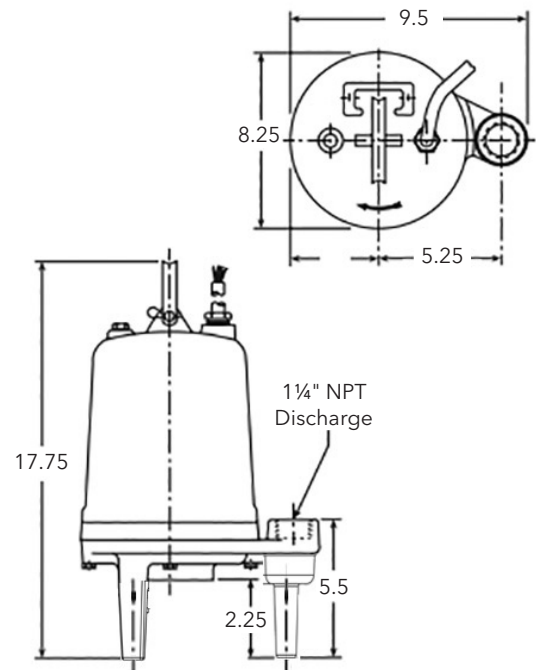
AGS 0511, 0512 & 1011 (in inches):



SPECIFICATIONS

	AGS0511*	AGS0512*	AGS1011*	AGS1012*	AGS2012
Voltage	115	208-230	115	208-230	
Amps	9A	4.5A	11A	5.5A	15A
HP	0.5		1		2
Capacity	46 gpm		53 gpm		52 gpm
Head	42 feet, TDH		66 feet, TDH		120 feet, TDH
Grinder	Axial, Stainless Steel (440C)				
Cutter Plate	8 Hole, 3 Blade, Stainless Steel (440C) (cutter)				
Bites Per Hour	4.9 Million				
Impeller	Semi-Open, Cast Iron				
Phase	Single				
Speed	3500 rpm				
Discharge	2"			1 1/4"	
Motor	Oil Cooled, CSCR				
Casing	Uni body, Class 30 Cast Iron				
Shaft	Stainless Steel, 300 Series SS				
Bearings	Upper/Lower Sealed Ball Bearings				
Hz	60				
Seal	Hardfaced Silicon Carbide on Silicon Carbide				
Cord	20 feet				
Insulation	Class F				
Weight	65 lbs			96 lbs	
Warranty	3 Year				

AGS 2012 (in inches):



FB24AGS Wastewater Basin Kit

BASIN KIT INCLUDES

- AGS Series Axial Grinder Pump (0.5 & 1 hp)
- 24x24 poly basin with PVC pipe, fittings, gasket tape
- Piggyback Float Switch

SPECIFICATIONS

FB24AGS Wastewater Basin Kit Model Number*	AGS Axial Grinder Pump Model Number	Basin	Piggyback Float Switch
FB24AGS0511	AGS0511	24x24 Structural foam polyethylene basin (STFB24)	A2H31
FB24AGS0512	AGS0512		A2H32
FB24AGS1011	AGS1011		A2H31
FB24AGS1012	AGS1012		A2H32

STFB24 Basin	
Basin Material	Structural foam polyethylene basin (STFB24)
Basin Type	Simplex
Cover	Foam cover, 2" discharge, 2" vent, electrical cord grommet
Inlet Grommet Hub	4" shipped loose (inlet hole cut by installer to align with inlet pipe)

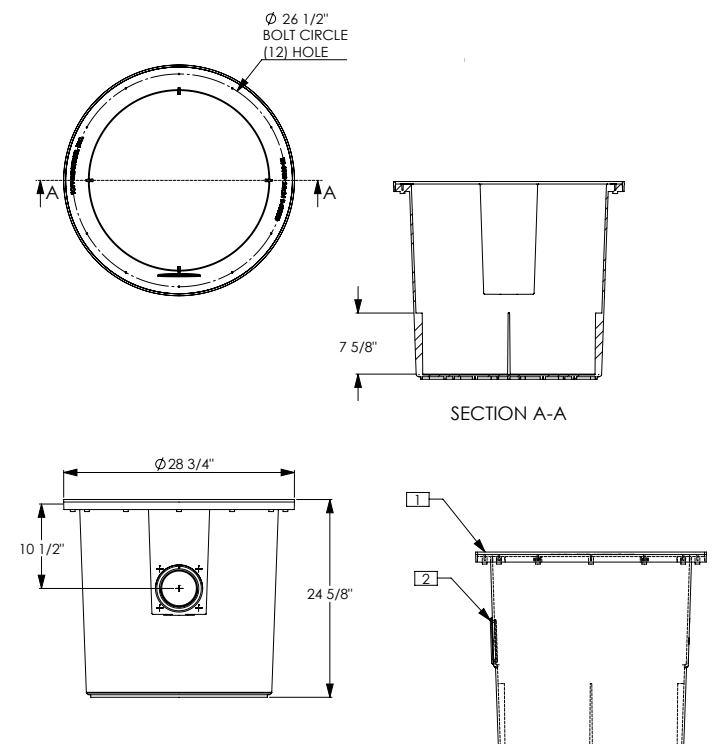
A2H Series Pump Switch**	
Switch	Mechanically activated, vertical operation
Pump Controls	Up to 1/2 hp at 120 V and up to 1 hp at 230 V
PVC Housing	Non-corrosive PVC (liquids up to 125°F (52°C))
Dimensions	12" high, 5" deep, 3" wide
Pumping Range	0.87" to 6.5"
Cord	16 AWG, SJOW
CSA	Certified

* **Note:** Unassembled basin kit. Installer to assemble. Installer to provide and apply pipe adhesive, drill weep hole in discharge pipe, and to provide and install check valve outside basin.

** Available for pump down applications only; and for confined applications requiring an accurate pumping range. UL recognized for use in non-potable water and sewage.



DIMENSIONAL DRAWINGS



GPGS Packaged Grinder System

GRINDER SYSTEM INCLUDES

- AGS2012 Axial Grinder Pump (ordered & delivered separately)
- Fiberglass basin

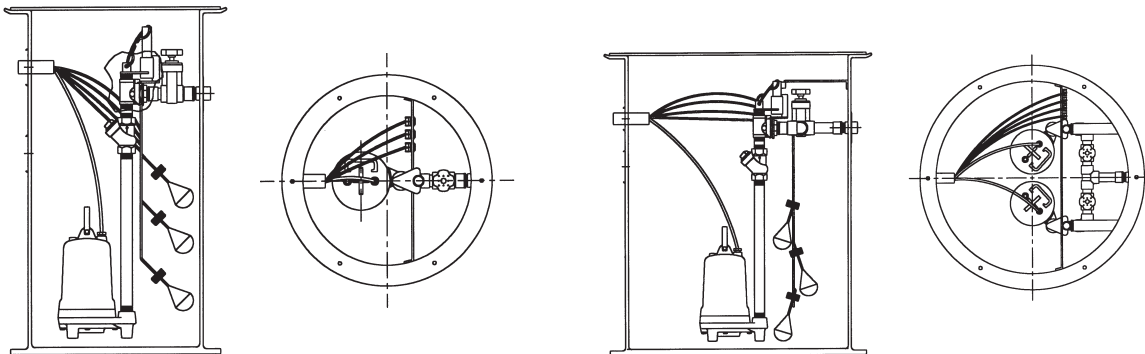
Available Configurations:

- Simplex & Duplex Basin
- Guide Rail Equipped & Non-Guide Rail Equipped
- With or without floats
- 1.25" & 2" discharge sizes
- Simplex basin sizes: 24"x48" up to 24"x84"
- Duplex basin sizes: 36"x48" up to 36"x84"

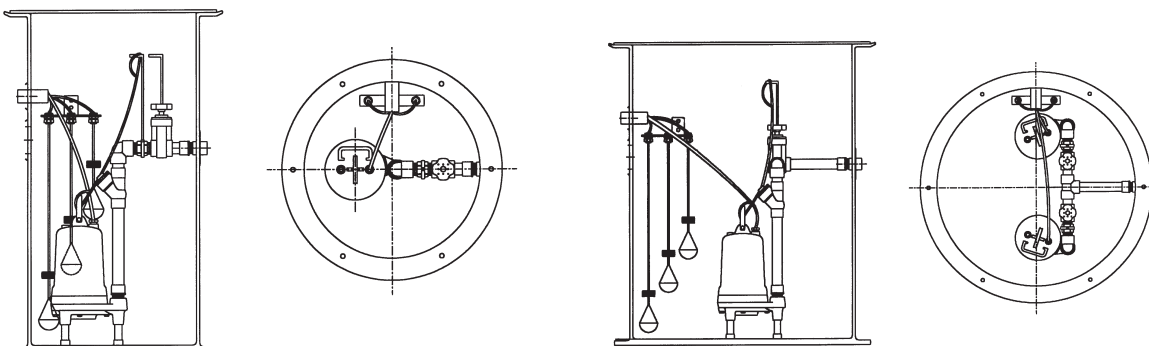


DIMENSIONAL DRAWINGS

Guide Rail Equipped Basins in Simplex & Duplex Configurations



Non-Guide Rail Equipped Basins in Simplex & Duplex Configurations



Note: Basin Covers are solid. Vent must be field installed per local code. Basins are not pre-drilled for electrical grommet or inlet grommet. Parts are shipped loose. Grommet holes are field installed.

AGS Series Wastewater Packages

A complete, simple-to-install wastewater basin package delivering axial grinding power and performance for the modern wastewater stream.

PACKAGE FEATURES & BENEFITS

- **Packaged Savings** - Bundled together as a single package item for optimal pricing, time-saving ordering and single delivery.
- **Efficient Installations** - The package arrives a factory-built basin. Simply set the basin, attach the pump, and connect the panel.



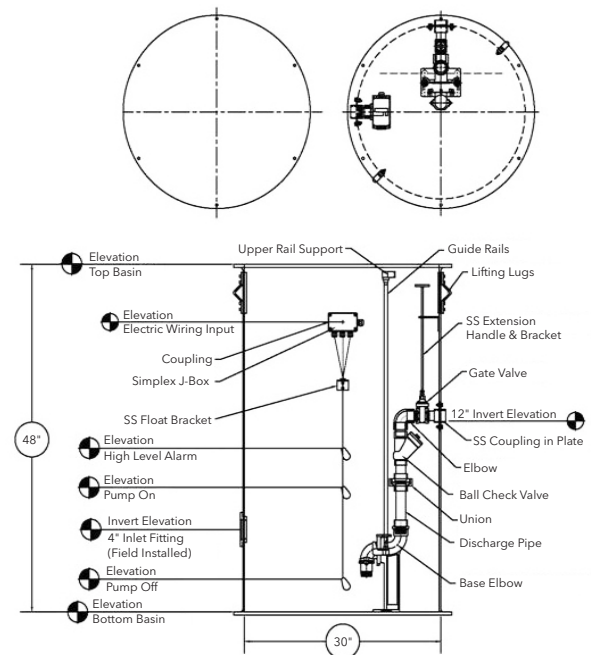
WASTEWATER PACKAGE INCLUDES

- **AGS Series Axial Grinder Pump**
- **K-Series Simplex Control Panel**
 - **Construction:** Rated NEMA 4X Thermoplastic enclosure for both indoor and outdoor use
 - **Easy installation:** Modern panel design, integrated mounting tabs and padlock latch make for an easier installation
 - **Flexible:** One panel handles three (3) voltages (120/208/230V)
 - UL and CUL Listed
- **Fiberglass 30x48 Simplex Basin**
 - **Hassle-free construction:** Completely assembled with guide rails, junction box, base elbow, piping
 - ASTM certified, Prop 65 certified
 - Built in the USA
 - **Basin Includes:**
 - Conery base elbow disconnects
 - Valves and piping complete
 - True union isolation
 - SS guide rails
 - SS float bracket
 - SS discharge coupling
 - Cast iron inlet hub shipped loose
 - SS upper guide rail bracket
 - SS lift out chain package(s)
 - SS exterior handle bracket
 - Basin lifting lugs
 - SS nuts, bolts and washers
 - PVC discharge piping
 - NEMA 4X junction box
 - Hatch covers

PACKAGE MODELS

Package	Pump Model	Control Panel	Basin Package
AGSPKG1	AGS0511	KS19020	SIM304812LS2
AGSPKG2	AGS0512		
AGSPKG3	AGS1011		
AGSPKG4	AGS1012		
AGSPKG5	AGS2012		

DIMENSIONAL DRAWINGS



Additional Resources

Goulds Water Technology provides more than pumps. We provide a wide range of tools and training to further support you as an industry professional.

Training & Education:

- Hands-on factory schools
- e-Learning courses
- Webinars
- Podcasts
- On-Demand videos



Goulds.com/WastewaterSolved highlights the benefits of partnering with Goulds Water Technology for your wastewater needs, along with information on our extensive product portfolio.

Select Goulds Water Technology is an online tool that allows users to easily size and select wastewater pumps and packages.

Visit **Goulds.com** for information on our entire product portfolio, including literature, product specifications and resources.



Xylem Inc.
Tel +1.866.325.4210
Fax +1.888.322.5877
www.xylem.com/goulds

Goulds is a registered trademark of Goulds Pumps, Inc. and is used under license.
© 2021 Xylem BRAGSSERIES R3 January 2021