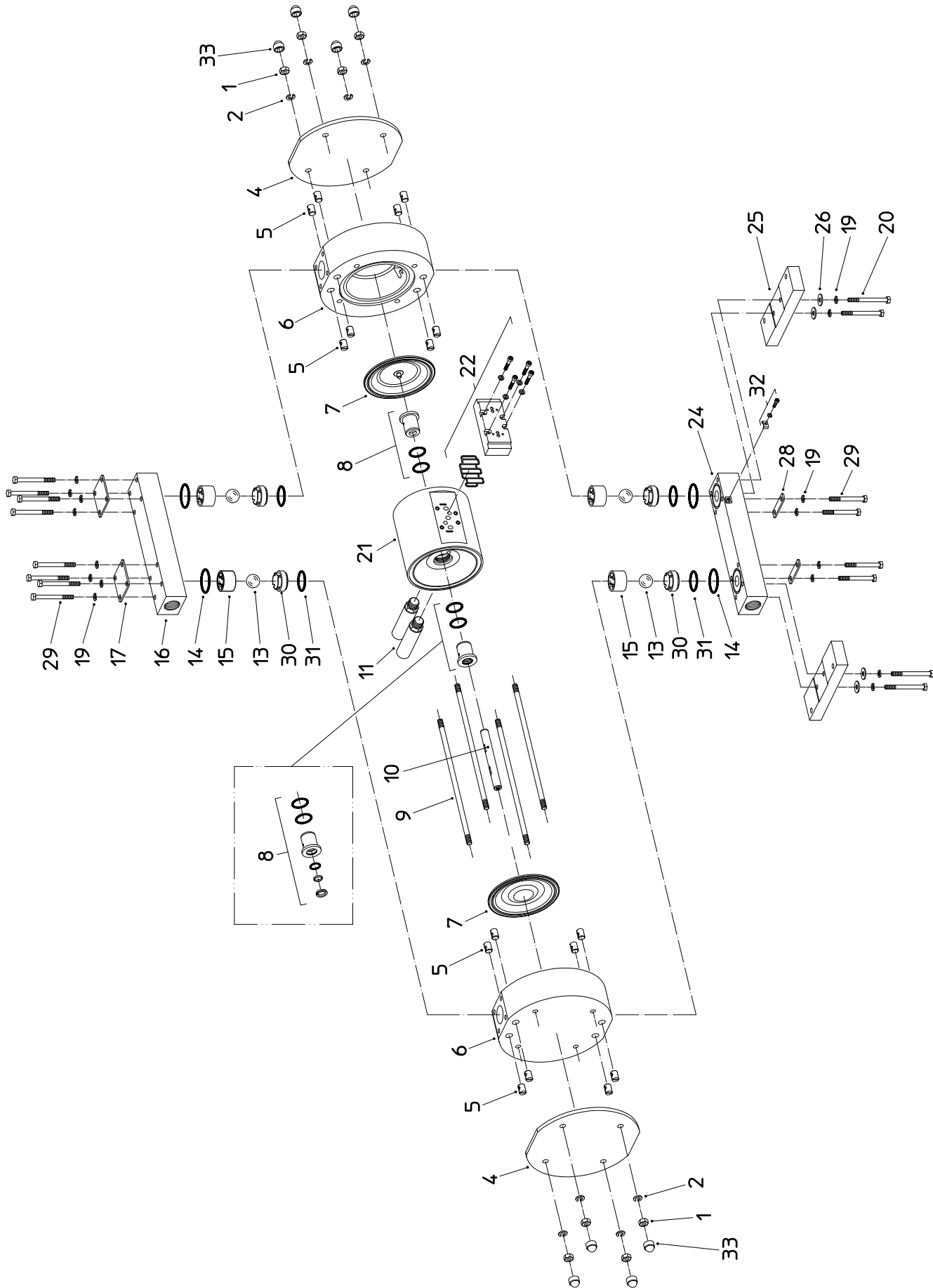




Druckluft-Membranpumpe RFML 25 PP
Air-operated Diaphragm Pump RFML 25 PTFE
Pompe a Membranes





Pos. No.	Qty. per unit	Description	Part No.	
			RFML 25 PP	RFML 25 PTFE
		Version according to exploded view No. D25 80 006 – 05/2007 valid as from Serial No. RFM00733		
1	8	Hexagonal nut	907 01 002	907 01 002
2	8	Spring washer	910 05 002	910 05 002
4	2	Support plate for pump housing	D25 70 063	D25 70 063
5	16	Insert for pump housing	D25 70 016	D25 70 016
6	2	Pump housing	D25 74 057	D25 74 058
7	2	Diaphragm (NBR) <i>optional</i>	D25 70 035	D25 70 035
		Diaphragm (PTFE/EPDM) <i>optional</i>	D25 70 036	D25 70 036
		Diaphragm (EPDM) <i>optional</i>	D25 70 037	D25 70 037
		Diaphragm (FKM)	D25 70 038	D25 70 038
8	1	Bearing kit with o-ring	D25 70 200	D25 70 200
9	4	Tension rod	D25 74 032	D25 74 032
10	1	Selector shaft	D25 74 019	D25 74 019
11	2	Silencer	947 15 008	947 15 008
13	4	Ball (NBR) <i>optional</i>	D25 74 001	D25 74 001
		Ball (PTFE) <i>optional</i>	D25 74 003	D25 74 003
		Ball (EPDM) <i>optional</i>	D25 74 004	D25 74 004
		Ball (FKM)	D25 74 002	D25 74 002
14	4	O-ring Ø45x3 (NBR) <i>optional</i>	925 73 001	925 73 001
		O-ring Ø45x3 (FFKM) <i>optional</i>	925 75 049	925 75 049
		O-ring Ø45x3 (EPDM) <i>optional</i>	925 75 039	925 75 039
		O-ring Ø45x3 (FKM)	925 75 002	925 75 002
15	4	Ball cage	D25 74 052	D25 74 052
16	1	Manifold, discharge side	D25 74 141	D25 74 142
17	2	Support plate for manifold	D25 70 064	D25 70 064
19	16	Spring washer	909 95 002	909 95 002
20	4	Hexagonal screw	900 91 022	900 91 022
21	1	Air valve part	D25 74 102	D25 74 102
22	1	5/2-way control valve	D25 74 000	D25 74 000

Attention: Please always give full description, part no. and quantity of parts required.

This list consists of 3 pages

FLUX-GERÄTE GMBH D-75433 Maulbronn

Rights reserved to make alterations and/or modifications



Pos. No.	Qty. per unit	Description	Part No.	
			RFML 25 PP	RFML 25 PTFE
		Version according to exploded view No. D25 80 006 – 05/2007 valid as from Serial No. RFM00733		
24	1	Manifold, suction side, c/w item 32	D25 74 145	D25 74 148
25	2	Pedestal	D25 70 077	D25 70 077
26	4	Washer	908 08 011	908 08 011
28	2	Support for manifold	D25 70 065	D25 70 065
29	12	Hexagonal screw	900 91 021	900 91 021
30	4	Ball seat	D25 74 076	D25 74 076
31	4	O-ring Ø37x3 (NBR) <i>optional</i>	925 65 052	925 65 052
		O-ring Ø37x3 (FEP) <i>optional</i>	925 65 055	925 65 055
		O-ring Ø37x3 (EPDM) <i>optional</i>	925 65 054	925 65 054
		O-ring Ø37x3 (FKM)	925 65 053	925 65 053
32	1	Equipotential bonding (connecting parts)	947 12 020	947 12 020
33	8	Hexagonal cap	947 05 057	947 05 057

Attention: Please always give full description, part no. and quantity of parts required.