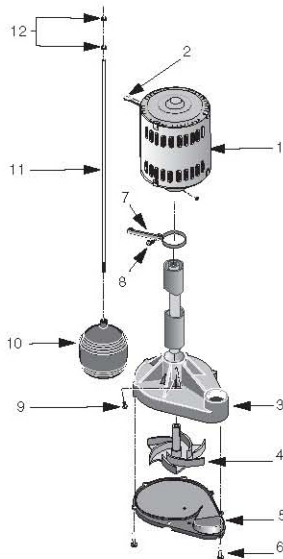
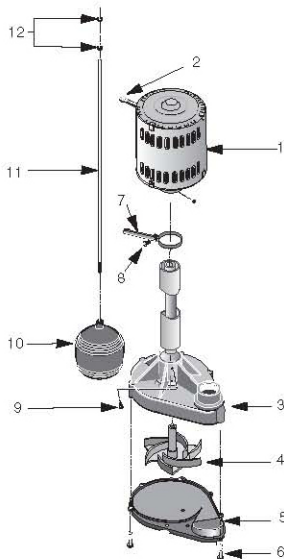


Model FPPM3600D-09

Model FPPSS3000-09

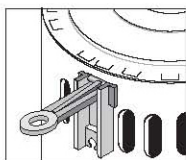


Models PM3600D-09 and PSS3000-09

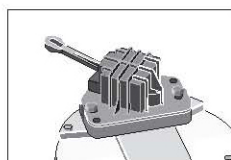
Key No.	Part Description	No. Used	Model	
			FPPSS3000-09	FPPM3600D-09
1	Motor	1	*	*
2	Switch	1	†	†
3	Volute (Pump Body)	1	S1-31B	PS1-25P
4	Impeller	1	PS5-269P	PS5-269P
5	Base Plate	1	PS4-17P	PS4-17P
6	Screws (Base Plate)	8	U30-571BT	U30-934ZP
7	Float Rod Guide	1	RP0005249	RP0005249
8	Screw (Guide Rod)	1	U30-929ZP	U30-929ZP
9	Screw (Base)	1	U30-946PH	SC004-116
10	Float	1	FT0013-63	FT0013-63
11	Float Rod	1	RP005168S	RP005168S
12	Float Stop	2	RP0005248	RP0005248

\* If the motor fails, replace the entire pump.

† Select switch model number below.



Switch FP0020



Switch FP0018-7D