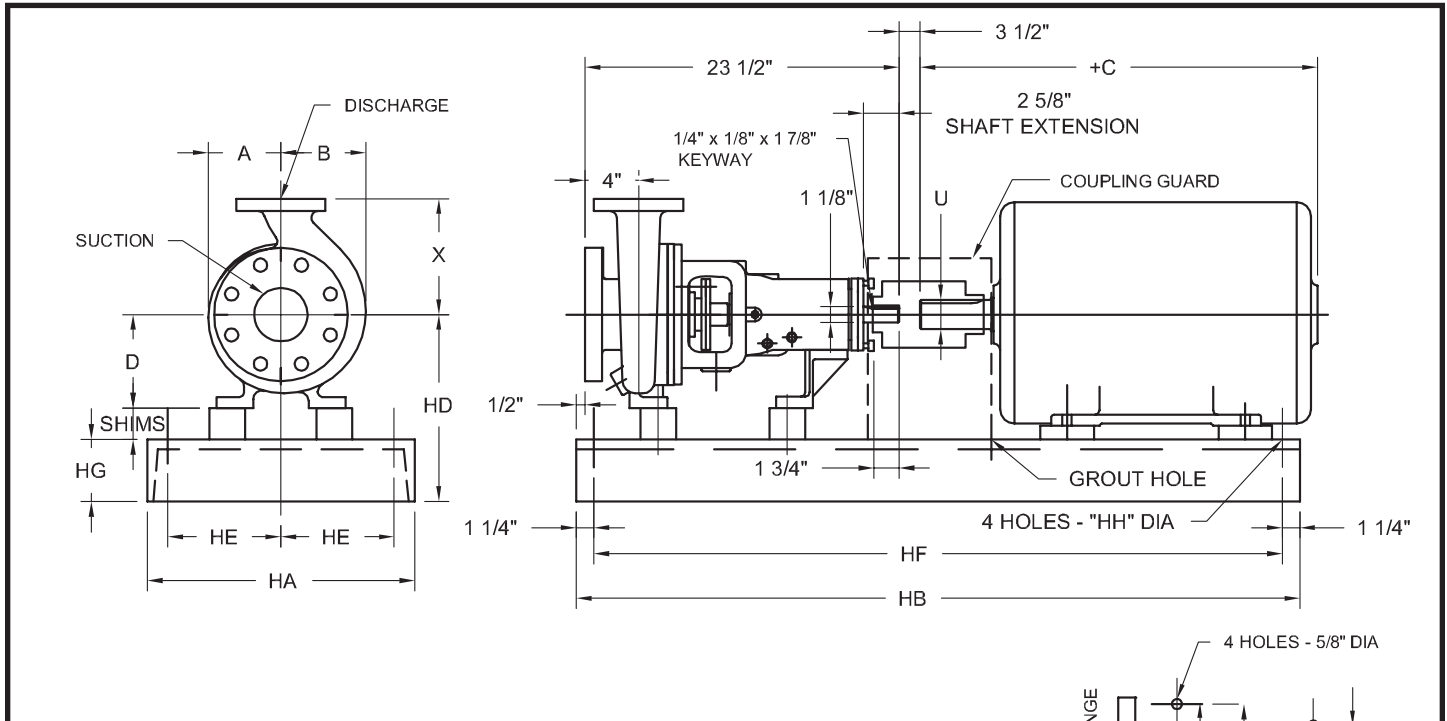


Chemical & Process ANSI Pumps



SIZE	SUCT	DISCH	A	B	D	X	MAX IMP DIA	150# FLANGE DRILLING						300# FLANGE DRILLING						* WT IN LBS
								SUCTION			DISCHARGE			SUCTION			DISCHARGE			
								NO.	SIZE	B.C.	NO.	SIZE	B.C.	NO.	SIZE	B.C.	NO.	SIZE	B.C.	
A20	3	1 1/2	7 9/16	8 1/4	10	10 1/2	12	4	3/4	6	4	5/8	3 3/8	8	7/8	6 5/8	4	7/8	4 1/2	200
A30	3	2	7 9/16	8 1/4	10	11 1/2	12	4	3/4	6	4	3/4	4 3/4	8	7/8	6 5/8	8	3/4	5	220

(* Weight is based on 150# casing.

Flange thickness per ASA Std B16, 5-1957, Flat Face.

MOTOR FRAME	C	U	BASE NO	HA	HB	HD	HE	HF	HG	HH	* WT
						A20-30					
284T	25 7/8	1 7/8	5	15	52	14 1/8	6	49 1/2	3 1/2	3/4	582
284TS	24 1/2	1 5/8				582					
286T	27 7/8	1 7/8				643					
286TS	26	1 5/8				643					
324T	28 3/4	2 1/8	6	18	58	14 3/4	7 1/2	55 1/2	4	1	834
324TS	27 1/4	1 7/8									834
326T	30 1/4	2 1/8									899
326TS	28 3/4	1 7/8									899
364T	33 3/8	2 3/8									1059
364TS	31	1 7/8									1059
365TS	32	1 7/8									1124
404TS	34 1/4	2 1/8									8
405TS	36	2 1/8	1454								
444TS	38 7/8	2 3/8	16	1904							
445TS	40 7/8	2 3/8	16	1904							

Customer				Shop Order No.			Date:		By:	
Pump Data	Fig. No.	Size	Curve No.	GPM	Head	Sp. Gr.	Temp.	Rotation	Packing/Seal	
Motor Data	MFGR	Hp	RPM	Phase-Cycle Voltage		Frame	Enclosure	Insulation	Furnished by	Mounted