

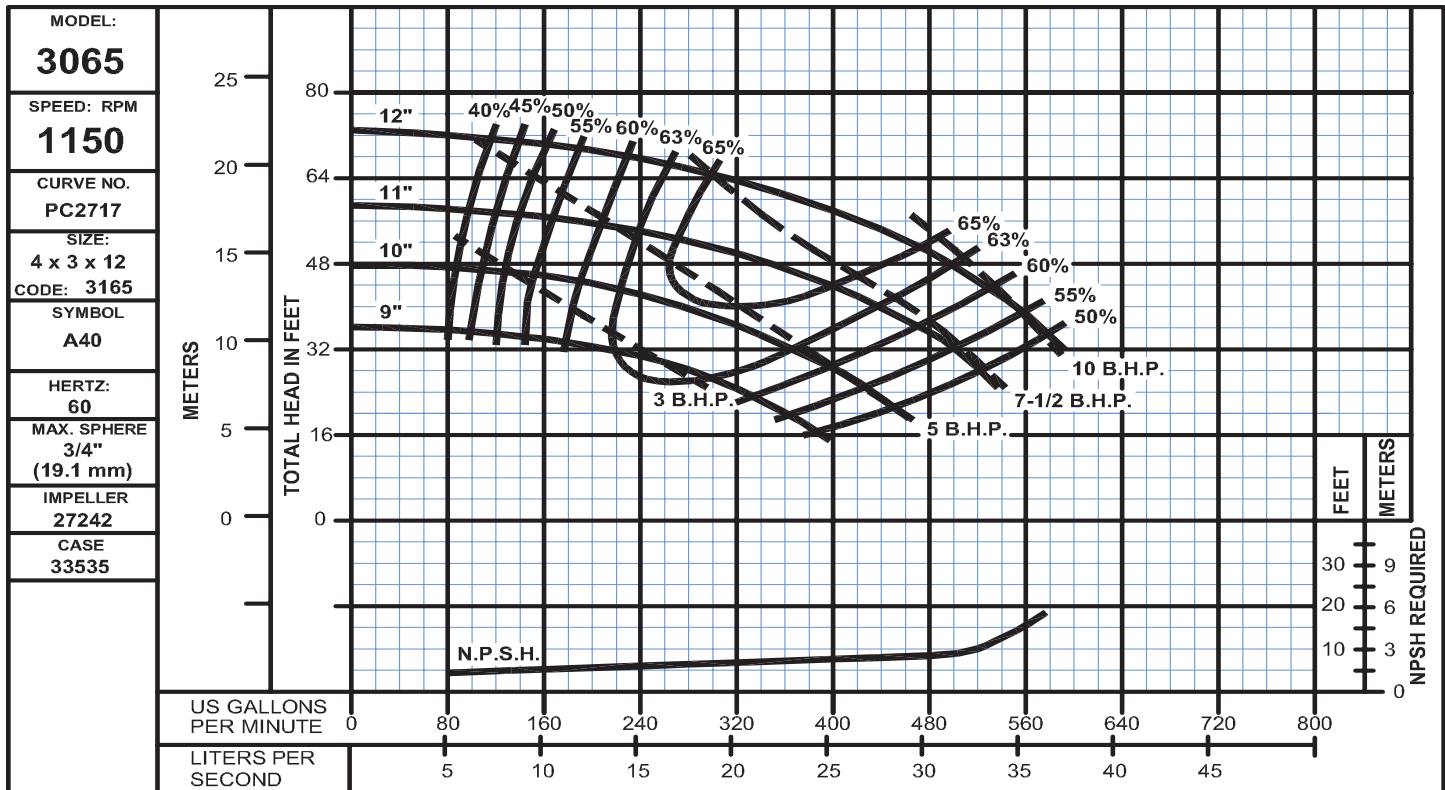
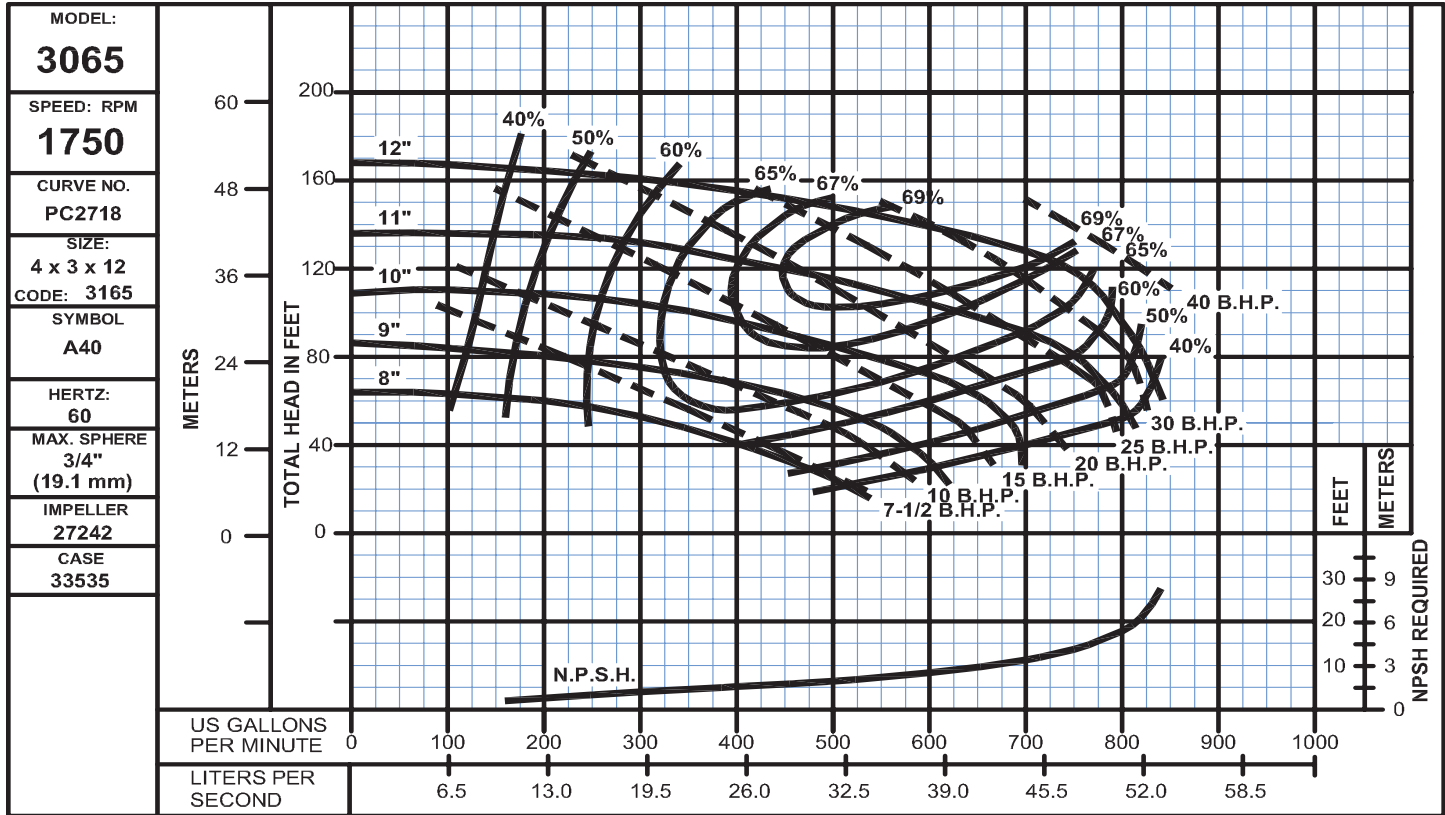
Fig. 3065

Size: 4 x 3 x 12, A40, 1750 & 1150RPM
Bulletin 3060

DEMING®

www.cranepumps.com

Chemical & Process ANSI Pumps



SECTION 36
PAGE 48
DATE 7/07

CRANE
A Crane Co. Company

PUMPS & SYSTEMS

Curves shown performance with liquid having Specific Gravity - 1.0, Viscosity - 30 SSU

USA: (937) 778-8947 • Canada: (905) 457-6223 • International: (937) 615-3598