

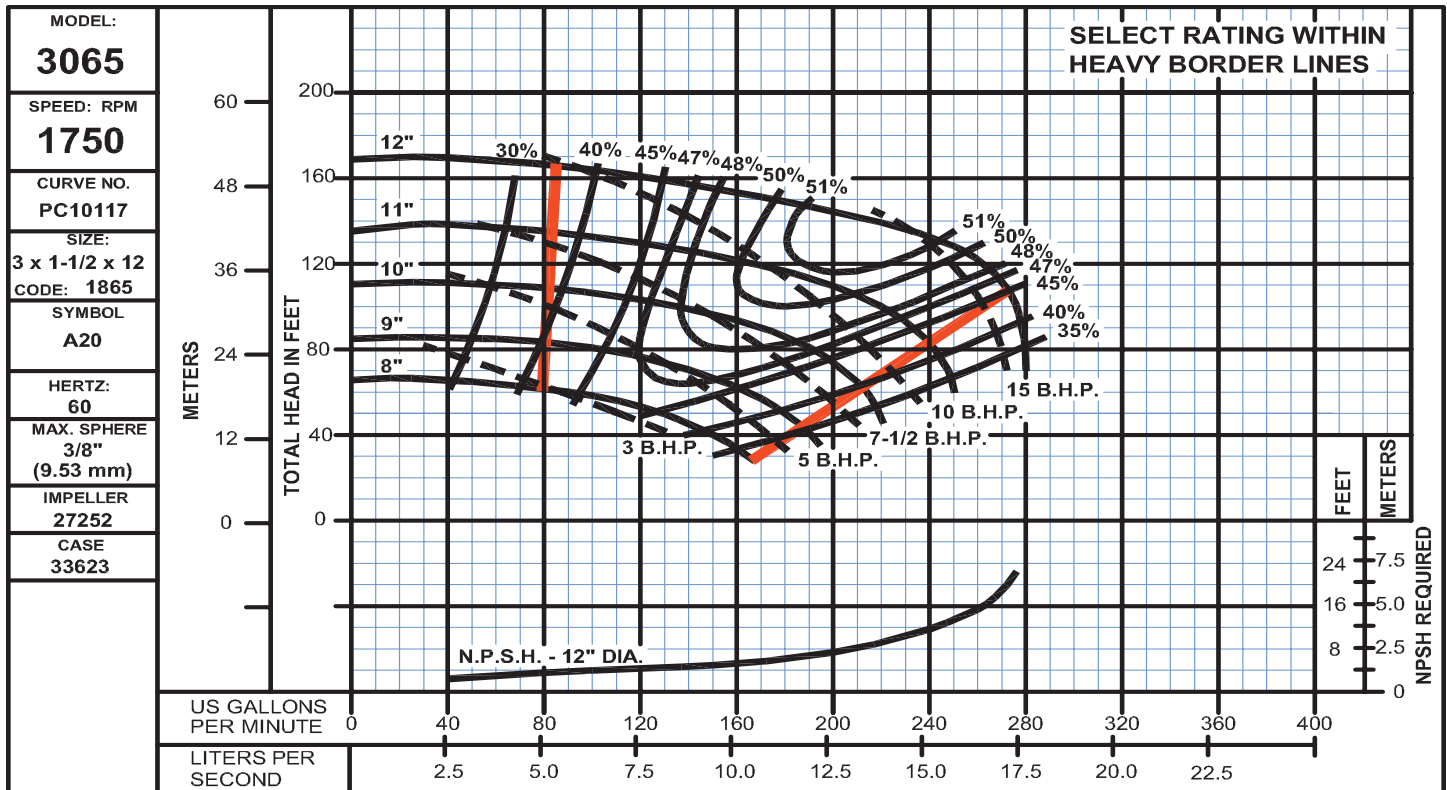
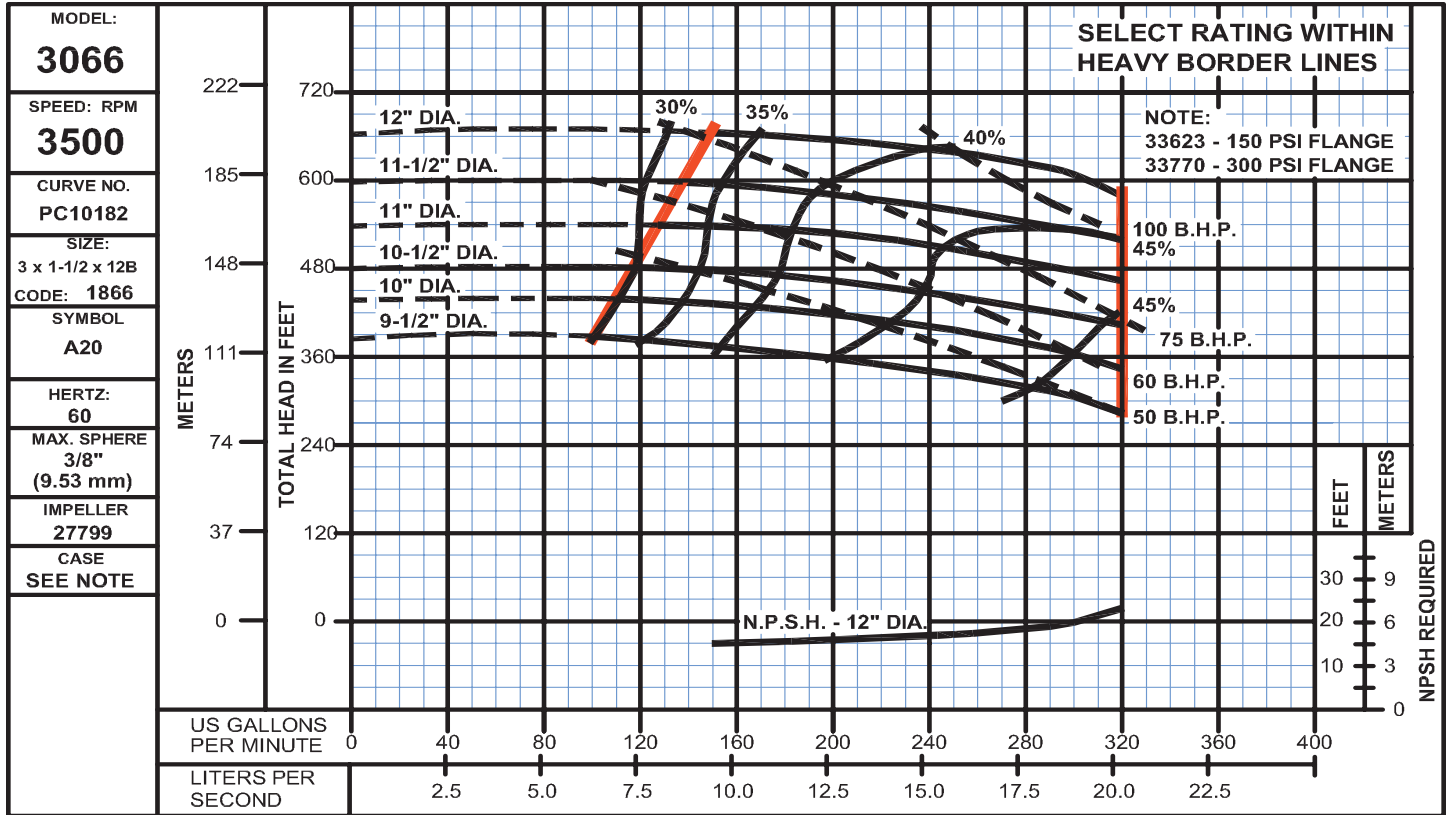
# Fig. 3065 & 3066

Size: 3 x 1-1/2 x 12B & 3 x 1-1/2 x 12, A20,  
3500 & 1750RPM - Bulletin 3060

# DEMING®

www.cranepumps.com

## Chemical & Process ANSI Pumps



SECTION 36  
PAGE 44  
DATE 7/07

**CRANE**  
A Crane Co. Company

PUMPS & SYSTEMS

Curves shown performance with liquid having  
Specific Gravity - 1.0, Viscosity - 30 SSU

USA: (937) 778-8947 • Canada: (905) 457-6223 • International: (937) 615-3598