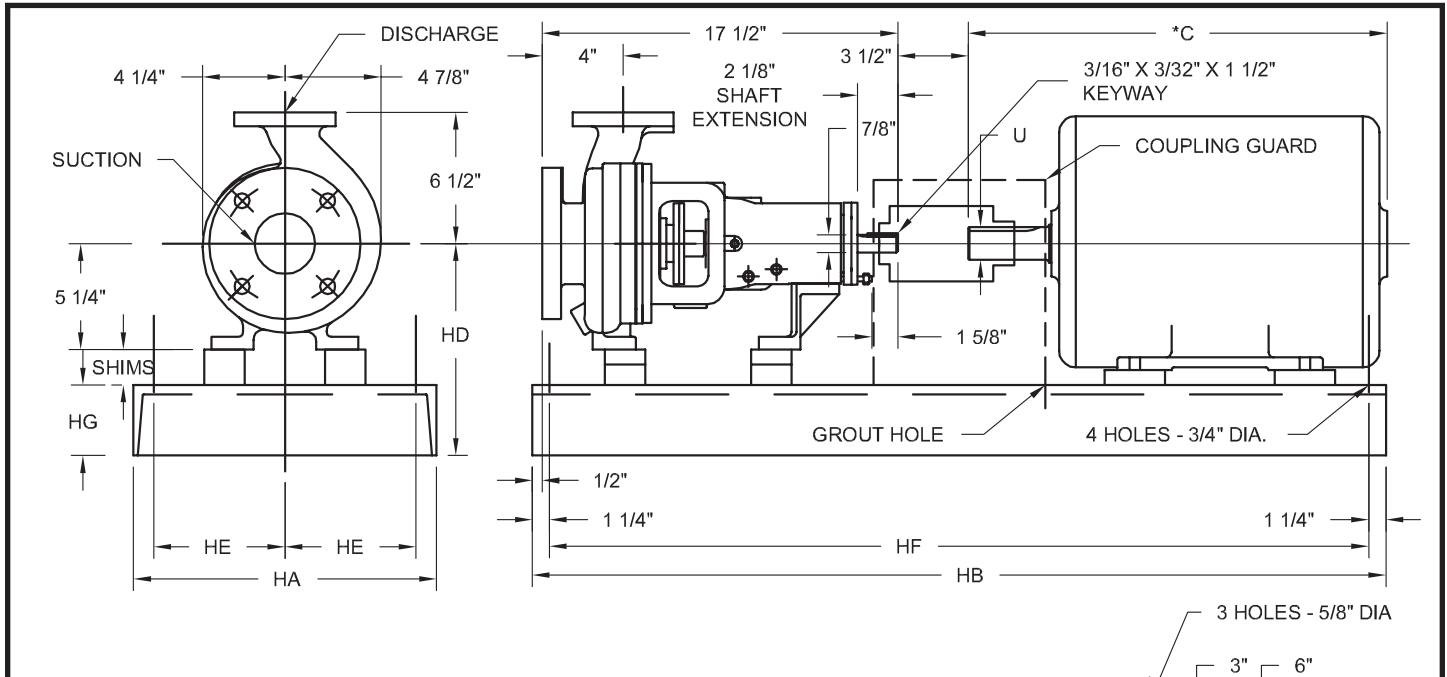
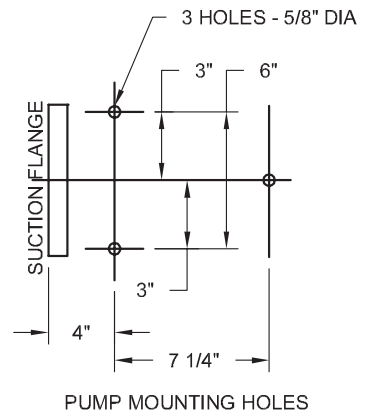


### Chemical & Process ANSI Pumps



SIZE	SUCT	DISCH	A	B	MAX IMP DIA	150# FLANGE DRILLING						300# FLANGE DRILLING						* WT IN LBS
						SUCTION			DISCHARGE			SUCTION			DISCHARGE			
						NO.	SIZE	B.C.	NO.	SIZE	B.C.	NO.	SIZE	B.C.	NO.	SIZE	B.C.	
AA6	1 1/2	1	4 1/4	4 7/8	6	4	5/8	3 7/8	4	5/8	3 3/8	4	7/8	4 1/2	4	3/4	3 1/2	70
AB6	3	1 1/2	4 1/4	4 7/8	6	4	3/4	6	4	5/8	3 3/8	8	7/8	6 5/8	4	7/8	4 1/2	74
AA8	1 1/2	1	5	5 1/4	8	4	5/8	3 3/8	4	5/8	3 3/8	4	7/8	4 1/2	4	3/4	3 1/2	70
AB8	3	1 1/2	5	5 1/4	8	4	3/4	6	4	5/8	3 3/8	8	7/8	6 5/8	4	7/8	4 1/2	74

(\*) Weight is based on 150# casing.  
Flange thickness per ASA Std B16, 5-1957, Flat Face.



MOTOR FRAME	56	143T	145T	182	182T	184	184T	213	213T	215	215T	254U	254T	256U	256T	284U	284T	284TS	286U	286T	286TS
BASE NO.	1			2			3														
C	9 - 14	13 3/8	13 3/8	14 1/4	14 5/8	15 1/4	15 5/8	17 1/2	17 3/4	19	19 1/4	22 5/8	22 5/8	24 3/8	24 5/8	26 1/8	25 5/8	24 1/2	27 5/8	27 3/8	26
U	5/8	7/8	7/8	7/8	1 1/8	7/8	1 1/8	1 1/8	1 1/8	1 1/8	1 3/8	1 3/8	1 5/8	1 3/8	1 5/8	1 5/8	1 5/8	1 5/8	1 5/8	1 5/8	1 5/8
HA	10			12			15														
HB	35			39			52														
HD	8 1/4			8 1/2			10 1/2						10 1/2 (was 11 1/2)								
HE	4			4 1/2			6														
HF	32 1/2			36 1/2			49 1/2														
HG	2 7/8 (was 3)			3 3/16 (was 3 1/4)			3 1/2														
** WT	134	134	134	154	154	168	168	272	272	297	297	462	462	512	512	569	569	569	629	629	629

(\*\*) WT includes Base, Coupling & Enclosed Motors.

Customer				Shop Order No.				Date:			By:		
Pump Data	Fig. No.	Size	Curve No.	GPM	Head	Sp. Gr.	Temp.	Rotation	Packing/Seal				
Motor Data	MFGR	Hp	RPM	Phase-Cycle Voltage		Frame	Enclosure	Insulation	Furnished by		Mounted		