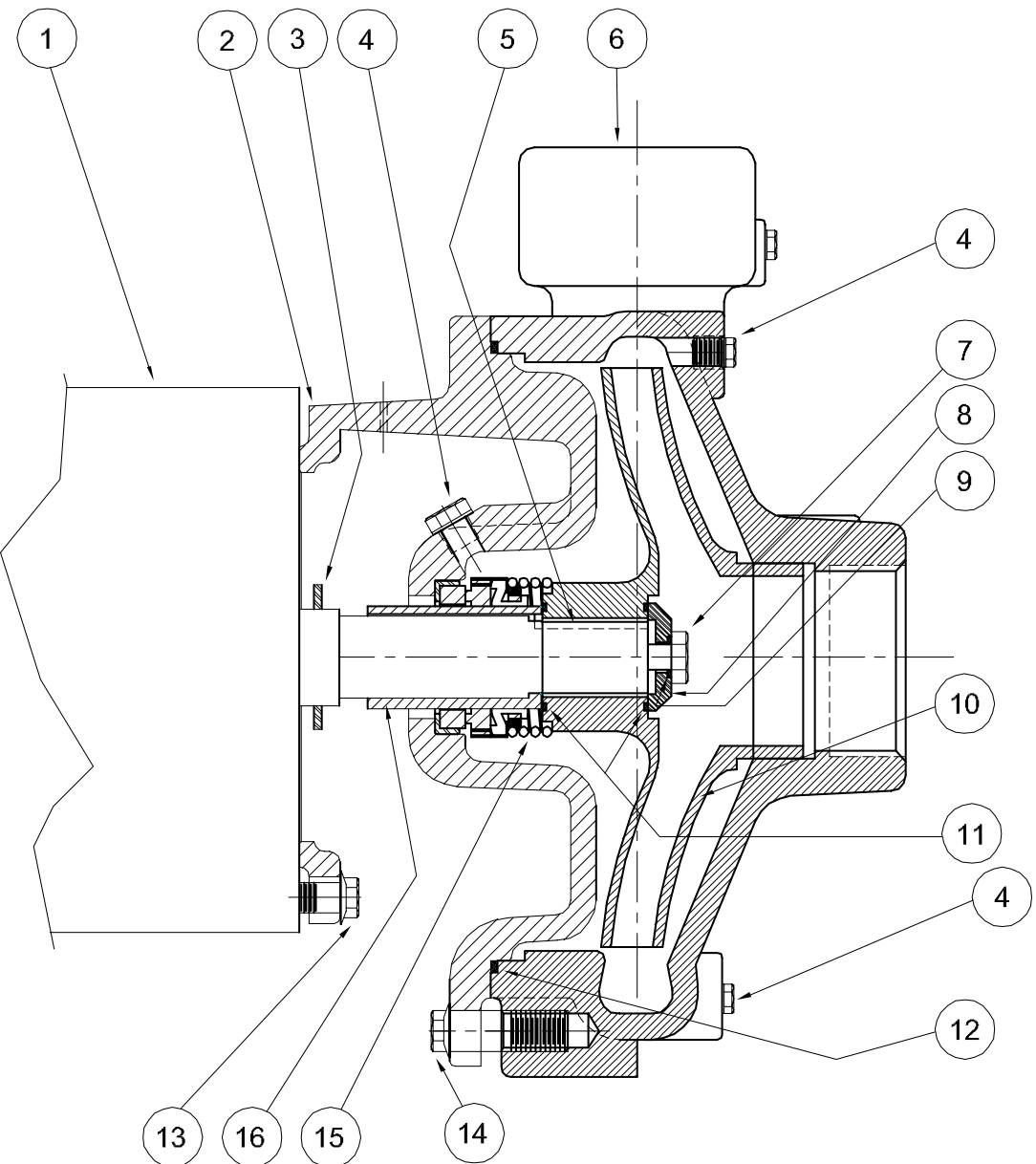


Centrifugals - Close Coupled



| 1 - MOTORS | | | |
|------------------------------------|-------------|----|------------|
| RPM & PHASE | PART NUMBER | HP | FRAME SIZE |
| OPEN DRIP PROOF | | | |
| 1750 RPM Single Phase (ODP) | 21393 | 1 | 143JM |
| | 21394 | 1½ | 145JM |
| 1750 RPM Three Phase (ODP) | 21419 | 1 | 143JM |
| | 21420 | 1½ | 145JM |
| 3500 RPM Single Phase (ODP) | 09902 | 5 | 184JM |
| | 21850 | 7½ | 213JM |
| 3500 RPM Three Phase (ODP) | 09906 | 5 | 182JM |
| | 09907 | 7½ | 184JM |
| | 09999 | 10 | 213JM |
| TOTALLY ENCLOSED | | | |
| 1750 RPM Single Phase (TEFC) | 21399 | 1 | 143JM |
| | 21400 | 1½ | 145JM |
| 1750 RPM Three Phase (TEFC) | 21426 | 1 | 143JM |
| | 21427 | 1½ | 145JM |
| 3500 RPM Single Phase (TEFC) | 22283 | 5 | 213JM |
| | 23442 | 7½ | 215JM |
| 3500 RPM Three Phase (TEFC) | 09950 | 5 | 184JM |
| | 09951 | 7½ | 213JM |
| | 20000 | 10 | 215JM |
| EXPLOSION PROOF | | | |
| 1750 RPM Three Phase (XP) | 21433 | 1 | 143JM |
| | 21434 | 1½ | 145JM |
| 3500 RPM Three Phase (XP) | 09954 | 5 | 184JM |
| | 09955 | 7½ | 213JM |
| | 20001 | 10 | 215JM |

| SYMBOL NUMBER | PART NUMBER | QTY | DESCRIPTION |
|--|---------------|-----|-------------------------------------|
| 13 | 21236 | 4 | Cap Screw - 143-184JM Motors |
| 14 | 22803 | 4 | Cap Screw - 213-215JM Motors |
| | 22803 | 4 | Cap Screw |
| 15 | 09917 | 1 | Mechanical Seal - Buna-N (Std) |
| | 09926 | 1 | Mechanical Seal - Viton |
| | 21271 | 1 | Mechanical Seal - EPDM** |
| 16 | 22063-C | 1 | Shaft Sleeve - Bronze |
| DIFFERING PARTS FOR ALL BRONZE CONSTRUCTION | | | |
| 2 | 22294-A | 1 | Adapter - Bronze - 143-184JM Motors |
| | 22845-A | 1 | Adapter - Bronze - 213-215JM Motors |
| 4 | 01691-A | 3 | Pipe Plug 1/8" Bronze |
| 6 | 22842-A | 1 | Casing - Bronze |
| 7 | 03289 | 1 | Cap Screw - Bronze |
| DIFFERING PARTS FOR ALL IRON CONSTRUCTION | | | |
| 2 | 00158 | 3 | Pipe Plug 1/8" Steel |
| 8 | 22105-A | 1 | Washer - Steel |
| 10 | Not Available | 1 | Impeller |
| 16 | 22063-A | 1 | Shaft Sleeve - SS |

(**) For hot water or Caustic service.

| SYMBOL NUMBER | PART NUMBER | QTY | DESCRIPTION |
|---------------|-----------------|-----|---|
| 2 | 22294 | 1 | Adapter - 143-184JM Motors |
| | 22845 | 1 | Adapter - 213-215JM Motors |
| 3 | 09918 | 1 | Slinger Washer |
| 4 | 00158 | 3 | Pipe Plug - 1/8" Bronze |
| 5 | 23014 | 1 | Key |
| 6 | 22842 | 1 | Casing |
| 7 | 1-529-1 | 1 | Cap Screw - SS |
| 8 | 22105-C | 1 | Washer - Bronze |
| 9 | 22080 | 1 | O-Ring Gasket - Buna-N (Std) |
| | 2-31005-012 | 1 | O-Ring Gasket - Viton |
| | 22093 | 1 | O-Ring Gasket - EPDM** |
| 10 | 1750 RPM | | |
| | 22841-6.63 | 1 | Impeller - 104GA7-1-1/2 & 3104GA7-1-1/2 |
| | 22841-7.06 | 1 | Impeller - 154GA7-1-1/2 & 3154GA7-1-1/2 |
| | 3500 RPM | | |
| | 22841-5.75 | 1 | Impeller - 50GA7-1-1/2 & 350GA7-1-1/2 |
| | 22841-6.63 | 1 | Impeller - 75GA7-1-1/2 & 375GA7-1-1/2 |
| | 22841-7.06 | 1 | Impeller - 3100GA7-1-1/2 |
| 11 | 22083 | 2 | O-Ring Gasket - Buna-N (Std) |
| | 22084 | 2 | O-Ring Gasket - Viton |
| | 22094 | 2 | O-Ring Gasket - EPDM** |
| 12 | 22321 | 1 | O-Ring Gasket - Buna-N (Std) |
| | 22322 | 1 | O-Ring Gasket - Viton |
| | 22324 | 1 | O-Ring Gasket - EPDM** |

CRANE®

PUMPS & SYSTEMS