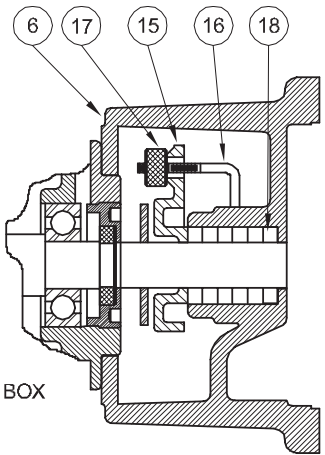
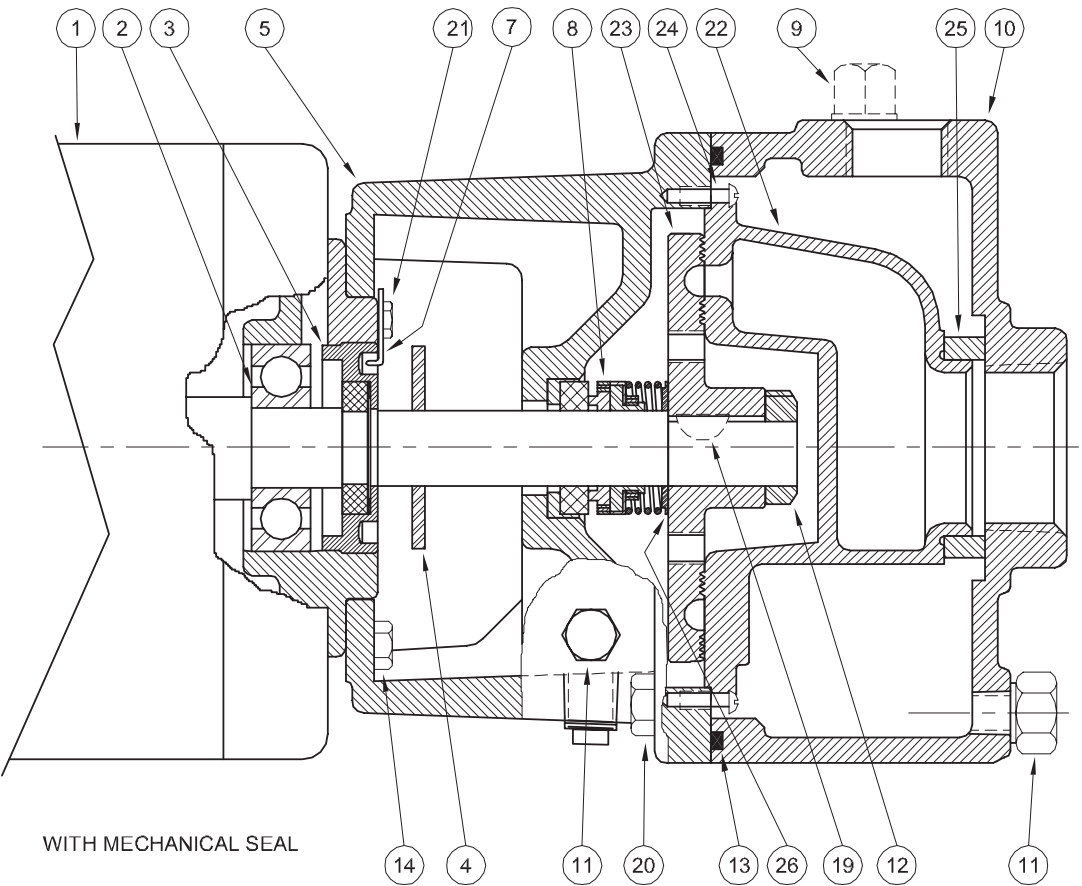


*Turbines - Close Coupled*



WITH STUFFING BOX



WITH MECHANICAL SEAL

| 1 - MOTORS                        |             |     |
|-----------------------------------|-------------|-----|
| RPM & PHASE                       | PART NUMBER | HP  |
| <b>1725RPM - OPEN DRIP PROOF</b>  |             |     |
| 1725 RPM<br>Single Phase<br>(ODP) | 09797       | 1/3 |
|                                   | 09799       | 1/2 |
| 1725 RPM<br>Three Phase<br>(ODP)  | 09798       | 1/3 |
|                                   | 09800       | 1/2 |
| <b>3450RPM - OPEN DRIP PROOF</b>  |             |     |
| 3450 RPM<br>Single Phase<br>(ODP) | 09805       | 1   |
|                                   | 09807       | 1½  |
|                                   | 09809       | 2   |
| 3450 RPM<br>Three Phase<br>(ODP)  | 09806       | 1   |
|                                   | 09808       | 1½  |
|                                   | 09810       | 2   |
|                                   | 09812       | 3   |
|                                   | 09855       | 5   |
| <b>3450RPM - TOTALLY ENCLOSED</b> |             |     |
| 3450 RPM<br>Three Phase<br>(TEFC) | 09824       | 1½  |
|                                   | 09845       | 2   |
|                                   | 09846       | 3   |

| SYMBOL NUMBER                               | PART NUMBER | QTY | DESCRIPTION                     |
|---|-------------|-----|---------------------------------|
| 24  | 02535       | 2   | Screw, Raceway to Frame         |
| 25  | 04231       | 1   | Suction Sleeve - Buna-N (Std)   |
|   | 09695       | 1   | Suction Sleeve - Viton          |
|   | 20285       | 1   | Suction Sleeve - EPT            |
| DIFFERING PARTS FOR ALL BRONZE CONSTRUCTION |             |     |                                 |
| 5   | 09787-A     | 1   | Frame (for mechanical seal)     |
| 6   | 09792-A     | 1   | Frame (for stuffing box)        |
| 10  | 09790-C     | 1   | Case                            |
| 14  | 03121-B     | 4   | Screw, 1/4-20 x 3/4" Lg         |
| 20  | 08771       | 4   | Screw, 7/16-14 x 1 1/4" Lg - SS |

| REPAIR KITS FOR CT SERIES PUMPS |              |
|---------------------------------|--------------|
| CATALOG NO.                     | FOR USE WITH |
| 20522-5                         | CS5M         |
| 20522-6                         | CS6M         |
| 20522-7                         | CS7M         |
| 20522-8                         | CS8M         |
| 20522-9                         | CS9M         |

Kit includes: Impeller, Raceway, Shaft Seal, O-ring Gasket, Suction Sleeve, Raceway Screws, Impeller Locknut, Shaft Key and Instructions

(\*) Standard impellers are suitable for fluid temperatures to 250°F (121°C). For higher temperatures, add the designation "HT" to impeller part number. This includes all "MJ" Jacketed Seal Pumps. EXAMPLE: SA09788-HT-5

| SYMBOL NUMBER | PART NUMBER  | QTY | DESCRIPTION                                 |
|---------------|--------------|-----|---|
| 2             | 09144        | 1   | Ball Bearing - Pump End                     |
|               | 05290        | 1   | Ball Bearing - Switch End (Not Shown)       |
| 3             | 04206-A      | 1   | Screw, Impeller Adjusting                   |
| 4             | 08324        | 1   | Slinger Washer                              |
| 5             | 09787        | 1   | Frame (for mechanical seal)                 |
| 6             | 09792        | 1   | Frame (for stuffing box)                    |
| 7             | 07576        | 1   | Adjusting Screw Lock                        |
| 8             | 08991        | 1   | Mechanical Seal - Buna-N                    |
|               | 09813-C      | 1   | Mechanical Seal - Viton                     |
|               | 21934        | 1   | Mechanical Seal - EPT                       |
| 9             | 02953        | 1   | Plug, 1/2"                                  |
| 10            | 09790-B      | 1   | Case  |
| 11            | 04236        | 3   | Plug, 1/4-18 NPT                            |
| 12            | 01404        | 1   | Impeller Lock Nut                           |
| 13            | 09791        | 1   | O-Ring Gasket - Buna-N                      |
|               | 09817        | 1   | O-Ring Gasket - Viton                       |
|               | 22135        | 1   | O-Ring Gasket - EPT                         |
|               | 22104        | 1   | O-Ring Gasket - Teflon                      |
| 14            | 03121        | 4   | Screw, 1/4" x 3/4"                          |
| 15            | 05812-B      | 1   | Gland, Stuffing Box                         |
| 16            | 07003        | 2   | Gland Bolt                                  |
| 17            | 04211        | 2   | Gland Nut                                   |
| 18            | 05468        | 5   | Packing                                     |
| 19            | 01457        | 1   | Key, Woodruff (As Shown - Repair Kits Only) |
|               | 21748-A      | 1   | Key, Square                                 |
| 20            | 01931        | 4   | Screw, 7/16-14 x 1 1/4" Lg                  |
| 21            | 07577        | 1   | Screw, #10 x 3/8" Lg                        |
| 22            | 09789-5      | 1   | Raceway for CS5M                            |
|               | 09789-6      | 1   | Raceway for CS6M                            |
|               | 09789-7      | 1   | Raceway for CS7M                            |
|               | 09789-8      | 1   | Raceway for CS8M                            |
|               | 09789-9      | 1   | Raceway for CS9M                            |
| * 23          | SA09788-5    | 1   | Impeller for CS5M                           |
|               | SA09788-6    | 1   | Impeller for CS6M                           |
|               | SA09788-7    | 1   | Impeller for CS7M                           |
|               | SA09788-HT-8 | 1   | Impeller for CS8M                           |
|               | SA09788-HT-9 | 1   | Impeller for CS9M                           |