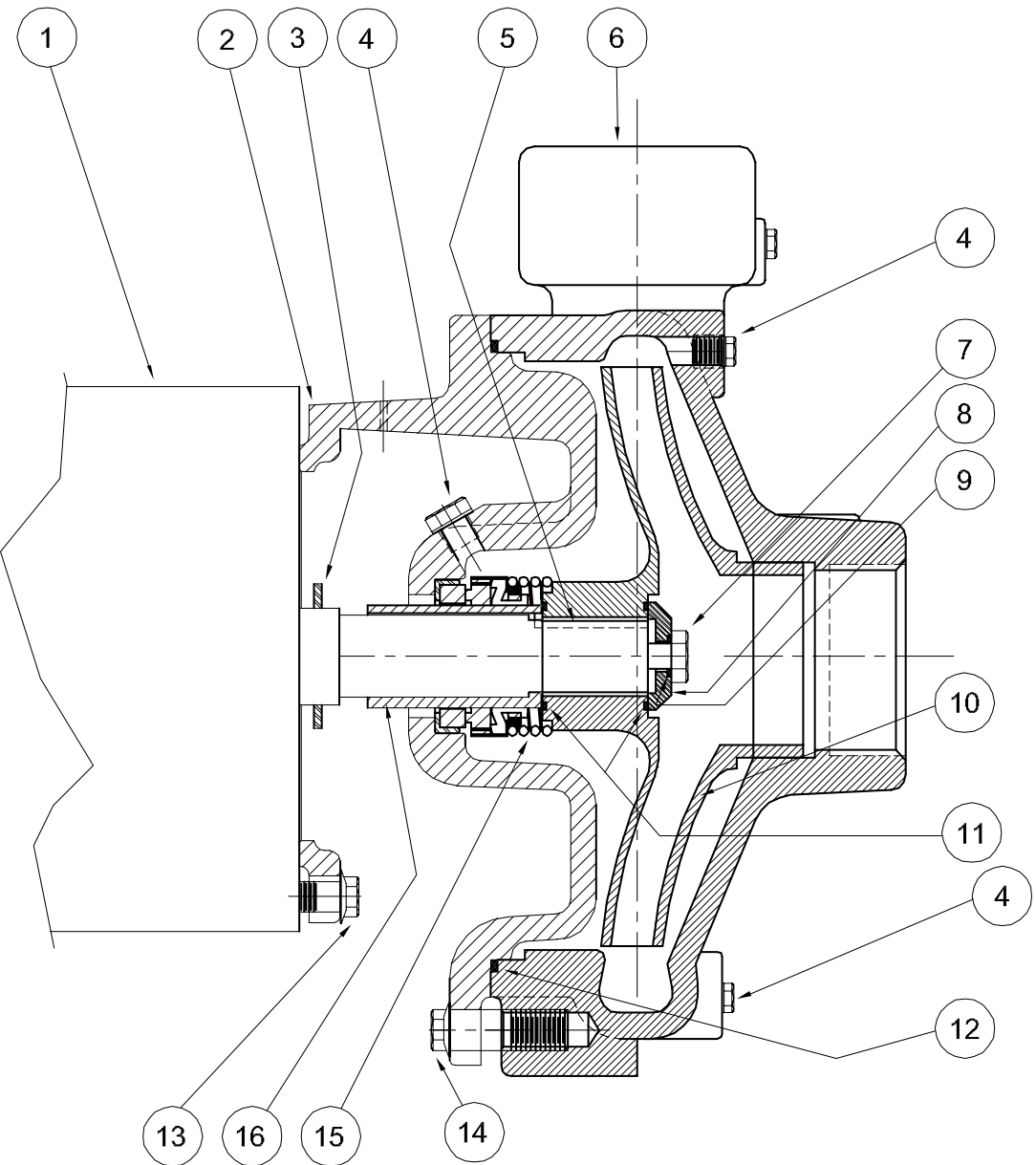


*Centrifugals - Close Coupled*



| 1 - MOTORS                         |             |    |            |
|------------------------------------|-------------|----|------------|
| RPM & PHASE                        | PART NUMBER | HP | FRAME SIZE |
| <b>OPEN DRIP PROOF</b>             |             |    |            |
| 1750 RPM<br>Single Phase<br>(ODP)  | 21393       | 1  | 143JM      |
|                                    | 21394       | 1½ | 145JM      |
| 1750 RPM<br>Three Phase<br>(ODP)   | 21419       | 1  | 143JM      |
|                                    | 21420       | 1½ | 145JM      |
| 3500 RPM<br>Single Phase<br>(ODP)  | 09902       | 5  | 184JM      |
|                                    | 21850       | 7½ | 213JM      |
| 3500 RPM<br>Three Phase<br>(ODP)   | 09906       | 5  | 182JM      |
|                                    | 09907       | 7½ | 184JM      |
|                                    | 09999       | 10 | 213JM      |
| <b>TOTALLY ENCLOSED</b>            |             |    |            |
| 1750 RPM<br>Single Phase<br>(TEFC) | 21399       | 1  | 143JM      |
|                                    | 21400       | 1½ | 145JM      |
| 1750 RPM<br>Three Phase<br>(TEFC)  | 21426       | 1  | 143JM      |
|                                    | 21427       | 1½ | 145JM      |
| 3500 RPM<br>Single Phase<br>(TEFC) | 22283       | 5  | 213JM      |
|                                    | 23442       | 7½ | 215JM      |
| 3500 RPM<br>Three Phase<br>(TEFC)  | 09950       | 5  | 184JM      |
|                                    | 09951       | 7½ | 213JM      |
|                                    | 20000       | 10 | 215JM      |
| <b>EXPLOSION PROOF</b>             |             |    |            |
| 1750 RPM<br>Three Phase<br>(XP)    | 21433       | 1  | 143JM      |
|                                    | 21434       | 1½ | 145JM      |
| 3500 RPM<br>Three Phase<br>(XP)    | 09954       | 5  | 184JM      |
|                                    | 09955       | 7½ | 213JM      |
|                                    | 20001       | 10 | 215JM      |

| SYMBOL NUMBER                                      | PART NUMBER   | QTY     | DESCRIPTION                         |                       |
|--|---------------|---------|-------------------------------------|-----------------------|
| 13   | 21236         | 4       | Cap Screw - 143-184JM Motors        |                       |
| 14   | 22803         | 4       | Cap Screw - 213-215JM Motors        |                       |
|  | 22803         | 4       | Cap Screw                           |                       |
| 15   | 09917         | 1       | Mechanical Seal - Buna-N (Std)      |                       |
|  | 09926         | 1       | Mechanical Seal - Viton             |                       |
|  | 21271         | 1       | Mechanical Seal - EPDM**            |                       |
| 16   | 22063-C       | 1       | Shaft Sleeve - Bronze               |                       |
| <b>DIFFERING PARTS FOR ALL BRONZE CONSTRUCTION</b> |               |         |                                     |                       |
| 2  | 22294-A       | 1       | Adapter - Bronze - 143-184JM Motors |                       |
|  | 22845-A       | 1       | Adapter - Bronze - 213-215JM Motors |                       |
|  | 4             | 01691-A | 3                                   | Pipe Plug 1/8" Bronze |
|  | 6             | 22842-A | 1                                   | Casing - Bronze       |
|  | 7             | 03289   | 1                                   | Cap Screw - Bronze    |
| <b>DIFFERING PARTS FOR ALL IRON CONSTRUCTION</b>   |               |         |                                     |                       |
| 2  | 00158         | 3       | Pipe Plug 1/8" Steel                |                       |
| 8  | 22105-A       | 1       | Washer - Steel                      |                       |
| 10   | Not Available | 1       | Impeller                            |                       |
| 16   | 22063-A       | 1       | Shaft Sleeve - SS                   |                       |

(\*\*) For hot water or Caustic service.

| SYMBOL NUMBER | PART NUMBER     | QTY | DESCRIPTION                             |
|---------------|-----------------|-----|---|
| 2             | 22294           | 1   | Adapter - 143-184JM Motors              |
|               | 22845           | 1   | Adapter - 213-215JM Motors              |
| 3             | 09918           | 1   | Slinger Washer                          |
| 4             | 00158           | 3   | Pipe Plug - 1/8" Bronze                 |
| 5             | 23014           | 1   | Key                                     |
| 6             | 22842           | 1   | Casing                                  |
| 7             | 1-529-1         | 1   | Cap Screw - SS                          |
| 8             | 22105-C         | 1   | Washer - Bronze                         |
| 9             | 22080           | 1   | O-Ring Gasket - Buna-N (Std)            |
|               | 2-31005-012     | 1   | O-Ring Gasket - Viton                   |
|               | 22093           | 1   | O-Ring Gasket - EPDM**                  |
| 10            | <b>1750 RPM</b> |     |   |
|               | 22841-6.63      | 1   | Impeller - 104GA7-1-1/2 & 3104GA7-1-1/2 |
|               | 22841-7.06      | 1   | Impeller - 154GA7-1-1/2 & 3154GA7-1-1/2 |
|               | <b>3500 RPM</b> |     |   |
|               | 22841-5.75      | 1   | Impeller - 50GA7-1-1/2 & 350GA7-1-1/2   |
|               | 22841-6.63      | 1   | Impeller - 75GA7-1-1/2 & 375GA7-1-1/2   |
|               | 22841-7.06      | 1   | Impeller - 3100GA7-1-1/2                |
| 11            | 22083           | 2   | O-Ring Gasket - Buna-N (Std)            |
|               | 22084           | 2   | O-Ring Gasket - Viton                   |
|               | 22094           | 2   | O-Ring Gasket - EPDM**                  |
| 12            | 22321           | 1   | O-Ring Gasket - Buna-N (Std)            |
|               | 22322           | 1   | O-Ring Gasket - Viton                   |
|               | 22324           | 1   | O-Ring Gasket - EPDM**                  |

**CRANE**<sup>®</sup>

**PUMPS & SYSTEMS**