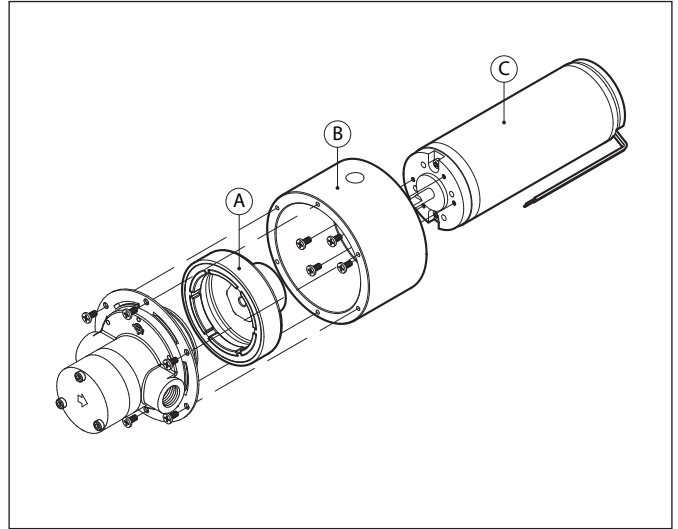




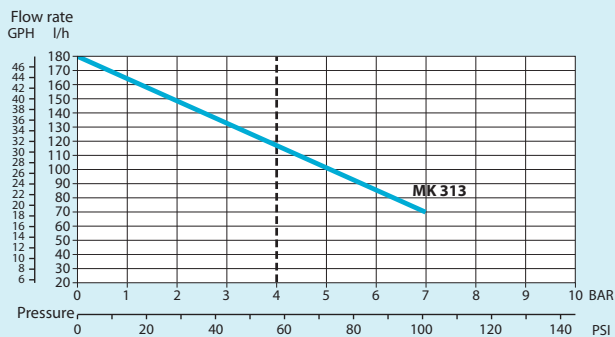
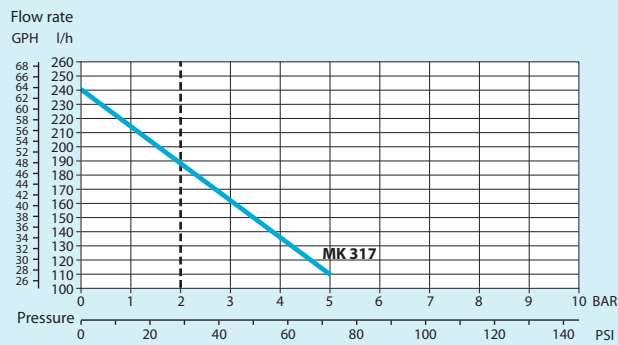
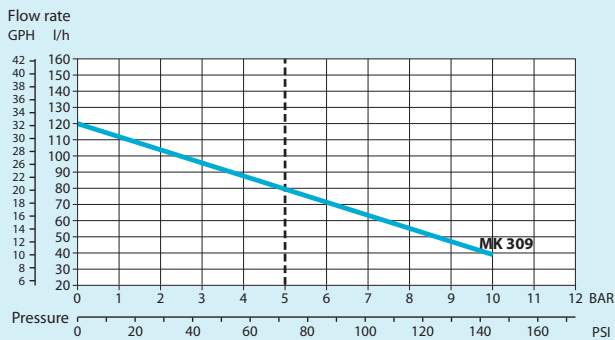
# Magnet drive gear pump-motor units MKCS08S/MKCS11S series

POS	DESCRIPTION	FEATURES	CODE
<b>A</b>	Driving magnet	For 5 mm bore	MKAS05S
<b>A+B</b>	Complete adapter	For KAG M48x50 For KAG M48x60	MKBS48S
<b>A+B+C</b>	Complete motor assembly	See table below	MKCS08S MKCS11S

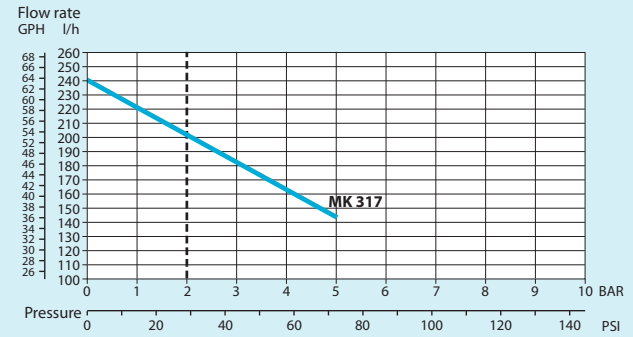
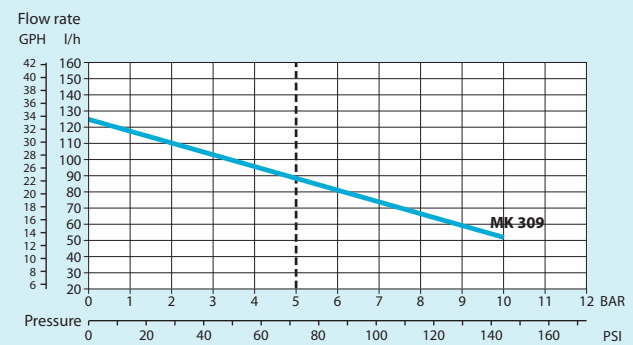
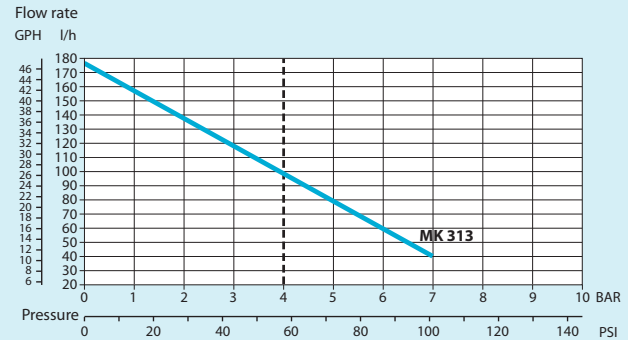
DRIVE TYPE	MKCS08S	MKCS11S
Voltage	12 DC	24 DC
Rated speed	3.050 rpm	3.150 rpm
Current consumption	3,4 A	2,6 A
Output power	32 W	49,5 W
Weight	910 g	980 g



## MKCS08S



## MKCS11S



Note: Beyond the continuous duty (dotted) line a motor test is needed. Characteristics with water at 20 °C (68 F) and without relief valve, max vacuum 724 mmHg. Use filter before pump inlet not larger than 10 microns. Pump weight: 2 Kg (4,4 Lbs). Temperature requirements different from ambient temperature must be mentioned on the order.

Fluid-o-Tech reserves the right to alter the specifications indicated in this catalogue at any time and without prior notice.

**Fluid-o-Tech srl**  
Via Leonardo da Vinci, 40  
20094 Corsico, Milano, Italy  
Tel. +39 02 999501  
Fax +39 02 99950999  
info@fluidotech.it

**Fluid-o-Tech Int'l Inc.**  
161 Atwater St.,  
06479 Plantsville CT (USA)  
Tel. +1 (860) 276-9270  
Fax +1 (860) 620-0193  
info@fluid-o-tech.com

**Fluid-o-Tech Int'l Inc. Japan**  
203, 2-17-19, Ebara, Shinagawa  
Tokyo 142-0063, Japan  
Tel. +81 (0) (3) 3783-9660  
Fax +81 (0) (3) 3783-9661  
k.kato@fluidotech.com

**Fluid-o-Tech Asia (Beijing) Co., Ltd**  
Jingwei Industrial Zone,  
Beifang Huairou, Beijing, 101400, PRC  
Tel. +86 (0) (10) 61684650  
Fax +86 (0) (10) 61684651  
info@fluidotech-asia.com