



FINISH THOMPSON INC.

TBP SERIES PUMPS

OPERATION & PARTS MANUAL





FINISH THOMPSON INC.
921 Greengarden Road • Erie, PA 16501-1591 U.S.A.
Ph 814-455-4478 • Fax 814-455-8518
Email fti@finishthompson.com • www.finishthompson.com

EU Declaration of Conformity



Finish Thompson Inc. hereby declares that the following machine(s) fully comply with the applicable health and safety requirements as specified by the EC Directives listed. The product may not be taken into service until it has been established that the drive motor for the Drum and Container Pump complies with the provisions of all relevant EC Directives. The complete product complies with the provisions of the EC Directive on machinery safety provided motors manufactured by Finish Thompson Inc. are used. This declaration is valid provided that the devices are fully assembled and no modifications are made to these devices.

Type of Device:

Drum and Container Pump Tubes

Models:

BTS - 40
HVDP LR-27/40/48
PFP-15/27/40/48/60/72
TBP-27/40/48
STTS-40

EPPI/EPSS 15/27/40
HVDP HR-27/40/28
PFS-27/40/48/60/72
TBS-40
TMS-40

EFP/EFV/EFS-16/27/40/48
PFM-27/40/48/60
PFV-27/40/48/60/72
TTC/TTS-27/40/48

EC Directives:

Machinery Safety (2006/42/EC)

Applied Harmonized Standards:

EN ISO 12100 Part 1
EN ISO 12100 Part 2
EN 809

Manufacturer:

Finish Thompson Inc.
921 Greengarden Road
Erie, Pennsylvania 16501-1591 U.S.A

Signed,

President

January 7, 2013

Person(s) Authorized to Compile Technical File: Michael Smith Engineers Limited
Oaks Road, Woking, Surrey
GU21 6PH, UK
Telephone: 01483 771871

Introduction

This manual pertains to the TBP Series drum pumps. Finish Thompson Inc. thanks you for choosing our products. We believe the use of our products will be fully satisfactory. When properly installed and operated, your Finish Thompson motor and pump will provide long, trouble-free service; therefore, please read this manual carefully before carrying out any operations on the pump/motor unit. Any use other than that described herein is considered incorrect; and, consequently, Finish Thompson Inc. shall not be held responsible for any damages to people or property. In case of doubt or enquiries, please reply to our Technical Service department directly at the following address:

Finish Thompson, Inc.
921 Greengarden Rd.
Erie, PA 16501 U.S.A.
Tel. 1-814-455-4478; Fax 1-814-455-8518
www.finishthompson.com; fti@finishthompson.com

Index

Introduction	1
Warranty, General Terms & Conditions.....	2
Safety	3
Pump Specifications	4
Installation.....	5
Maintenance	
Disassembly	5
Inspection	6
Reassembly	6
Exploded View	7
Pump Tube Spare Parts List	8

Technical Service Hotline: 1-800-888-3743 or email techservice@finishthompson.com

Warranty, General Terms & Conditions

1. The following terms and conditions apply to the sale of machinery, components and related services and products, of Finish Thompson Inc. (hereinafter “the products”)
2. Finish Thompson Inc. (the manufacturer) warrants only that:
 - a) its products are free of defects in material, design and workmanship at the time of original purchase;
 - b) its products will function in accordance with Finish Thompson Inc. operation manuals; Finish Thompson Inc. does not guarantee that the product will meet the precise needs of the Customer, except for those purposes set out in any invitation to render documents or other documents specifically made available to Finish Thompson Inc. before entering into this agreement;
 - c) high quality materials are used in the construction of the pumps and that machining and assembly are carried out to the highest standards. Except as expressly stated above, Finish Thompson Inc. makes no warranties, express or implied, concerning the products, including all warranties of fitness for a particular purpose.

This warranty shall not be applicable in circumstances other than defects in material, design, and workmanship. In particular warranty shall not cover the following:

- d) Periodic checks, maintenance, repair and replacement of parts due to normal wear and tear;
- e) Damage to the product resulting from:
 - i. Tampering with, abuse or misuse, including but not limited to failure to use the product for its normal purposes as stated at the time of purchase or in accordance with Finish Thompson, Inc. instructions for use and maintenance of the product, or the installation or improper ventilation or use of the product in a manner inconsistent with the technical or safety standard in force;
 - ii. Repairs performed by non-authorized service workshop, or opening of the unit by non-authorized personnel, or use of non genuine Finish Thompson Inc. parts;
 - iii. Accidents, force majeure or any cause beyond the control of Finish Thompson Inc., including but not limited to lightning, water, fire, earthquake, and public disturbances, etc.
3. The warranty shall cover the replacement or repair of any part, which is documented to be faulty due to construction or assembling, with new or repaired parts free of charge delivered by Finish Thompson, Inc. Parts subjected to normal wear and tear shall not be covered by the warranty. Finish Thompson, Inc. shall decide as to whether the defective or faulty part shall be replaced or repaired. Transportation charges are prepaid to Finish Thompson.
4. The warranty of the products shall be valid for a period of **12 months** from the date of delivery, under the condition that notice of the alleged defect to the products or parts thereof be given to Finish Thompson, Inc. within the term of 8 days from the discovery.
5. Repair or replacement under the terms of this warranty shall not give a right to an extension to, or a new commencement of, the period of warranty. Repair or replacement under the terms of this warranty may be fulfilled with functionally equivalent re-conditioned units. Finish Thompson Inc. qualified personnel shall be solely entitled to carry out repair or replacement of faulty parts after careful examination of the motor. Faulty parts or components when replaced by Finish Thompson Inc. will become the property of Finish Thompson Inc. If this warranty does not apply, the purchaser shall bear all cost for labor, material and transportation.
6. Finish Thompson Inc. will not be liable on any claim, whether in contract, tort, or otherwise, for any indirect, special, incidental, or consequential damages, caused to the customer or to third parties, including loss of profits, process down time, transportation costs, costs associated with replacement or substitution products, labor costs, installation or removal costs. In any and all events, manufacturer’s liability shall not exceed the purchase price of the product and/or accessories.
7. **Return Policy.** Should you have any problems with this product, please contact the distributor in your area. The distributor will determine if a return to the factory is necessary and will contact the factory for a Return Authorization Number. Otherwise, contact our Technical Service Hotline (1-800-888-3743) or e-mail techservice@finishthompson.com if you have any questions regarding product operation or repair.

Safety

1. Introduction

This manual contains all the information needed for the correct installation, use and maintenance of your new Finish Thompson pump. It should be read and understood by all the personnel involved in installation, operating and servicing of the pump before it is started.

2. Operator Qualification and Training

The personnel in charge of the installation, the operation, and the maintenance of the pump must be qualified and able to perform the operations described in this manual. Finish Thompson, Inc. shall not be held responsible for the training level of personnel and for the fact that they are not fully aware of the contents of this manual.

3. Safety Instructions

FOR YOUR OWN SAFETY

BEFORE using or servicing your pump, please make sure to wear the proper clothing, eye protection and follow standard safety procedures when handling corrosive or personally harmful materials.

GENERAL DANGER

ALWAYS use a stainless steel pump tube with an explosion proof electric motor or air motor and static protection kit with grounded discharge hose when pumping or mixing flammable or combustible material.

ALWAYS use and store the pump and motor in an upright position.

DANGER: POWER SUPPLY

Refer to instructions in the appropriate motor Operation & Installation Manual.

4. Noise Level

Refer to specifications in the appropriate motor Operation & Installation Manual.

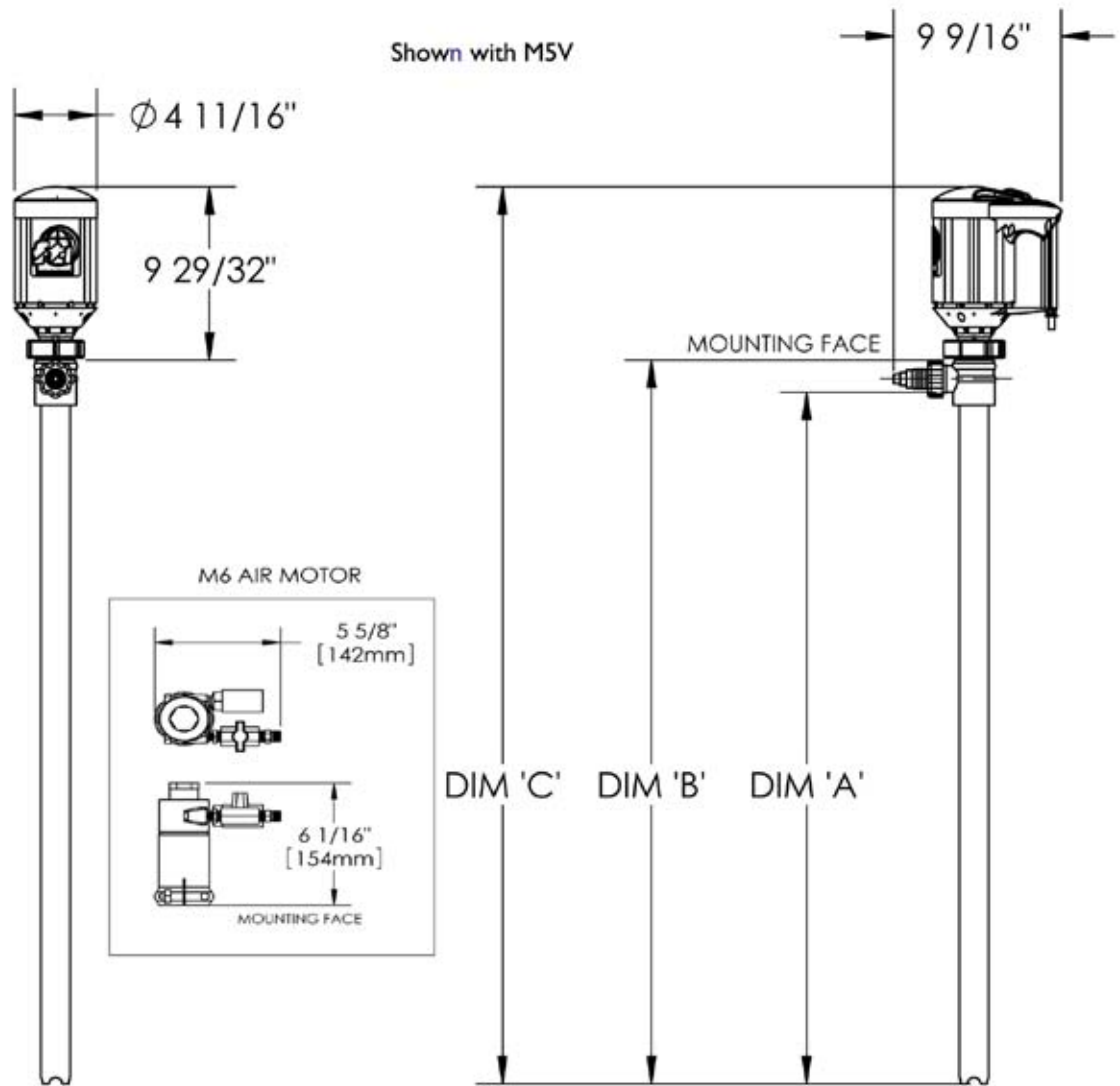
5. Modifications and Spare Parts

Any changes concerning the service of the pump as originally purchased can be executed only after written approval from Finish Thompson Inc. It is recommended to use only genuine Finish Thompson Inc. spare parts and approved accessories. The use of non-original spare parts or non-approved accessories will void warranty and removes any responsibility on the manufacturer's behalf for any damage caused to people or things.

6. Cleaning

It is highly recommended to flush pumps with clean water or some other neutralizing fluid compatible with pump materials when done pumping or when switching chemicals.

PUMP SPECIFICATIONS	
	MODEL TBP
Outer Tube Diameter	1.66" (4.2 cm)
Discharge Thread	1" hose barb
Max. Specific Gravity	1.4
Max. Viscosity	200 cP
Min./ Max. Fluid Temperature	35°F Min. to 150°F Max.
	(1.6°C Min. to 66°C Max.)
Wetted Materials	Pure polypropylene, pure PVDF, PTFE, Alloy 625



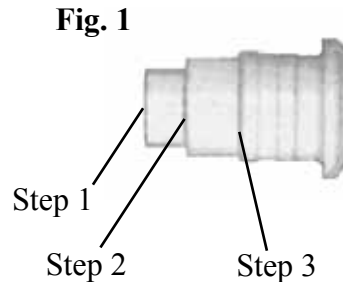
MODEL	DIM 'A' (IN.)	DIM 'A' (MM)	DIM 'B' (IN.)	DIM 'B' (MM)	DIM 'C' (IN.)	DIM 'C' (MM)
TBP 27	26.5	673.1	28.375	721	38-9/32	972
TBP 40	39.5	1003.3	41.375	1051	51-9/32	1303
TBP 48	47.5	1206.5	49.375	1254	59-9/32	1506

Installation & Maintenance Instructions

Installation

1. Remove the drum pump and motor from its packaging and inspect for shipping damage.
2. Turn the pump coupling to verify there is no binding.
3. Adjust the coupling so that the empty slots in the insert are at 3 and 9 o'clock with the pump discharge at 12 o'clock.
4. Install the motor according to instructions in the appropriate motor manual.
5. Attach discharge hose and install pump into the container.

Note: Pumps with the standard 1" barb spout ship with a variable orifice fitting, which limits the flow of the pump to 10 gpm. As it is cut away, flow will increase minimum up to maximum flow (to increase flow, simply trim back orifice) See Fig. 1.



Maintenance

Disassembly

1. Carefully place the pump head (item 5) in a vice (do not crush), and unthread the intake tube (item 6) by turning it clockwise (left hand thread). Pull the intake tube (item 6) carefully off the bottom of the pump shaft.
2. Holding the pump coupling half (item 2) in one hand, unthread the pump shaft (item 10) from the bearing assembly (item 3) by turning it counterclockwise (right hand threads).
3. Remove the bearing assembly (item 3) and the seal assembly (item 4) from the pump head (item 5) being careful not to damage the threaded area at the bottom of the bearing assembly. Discard the seal assembly (never reuse the seal).

Inspection

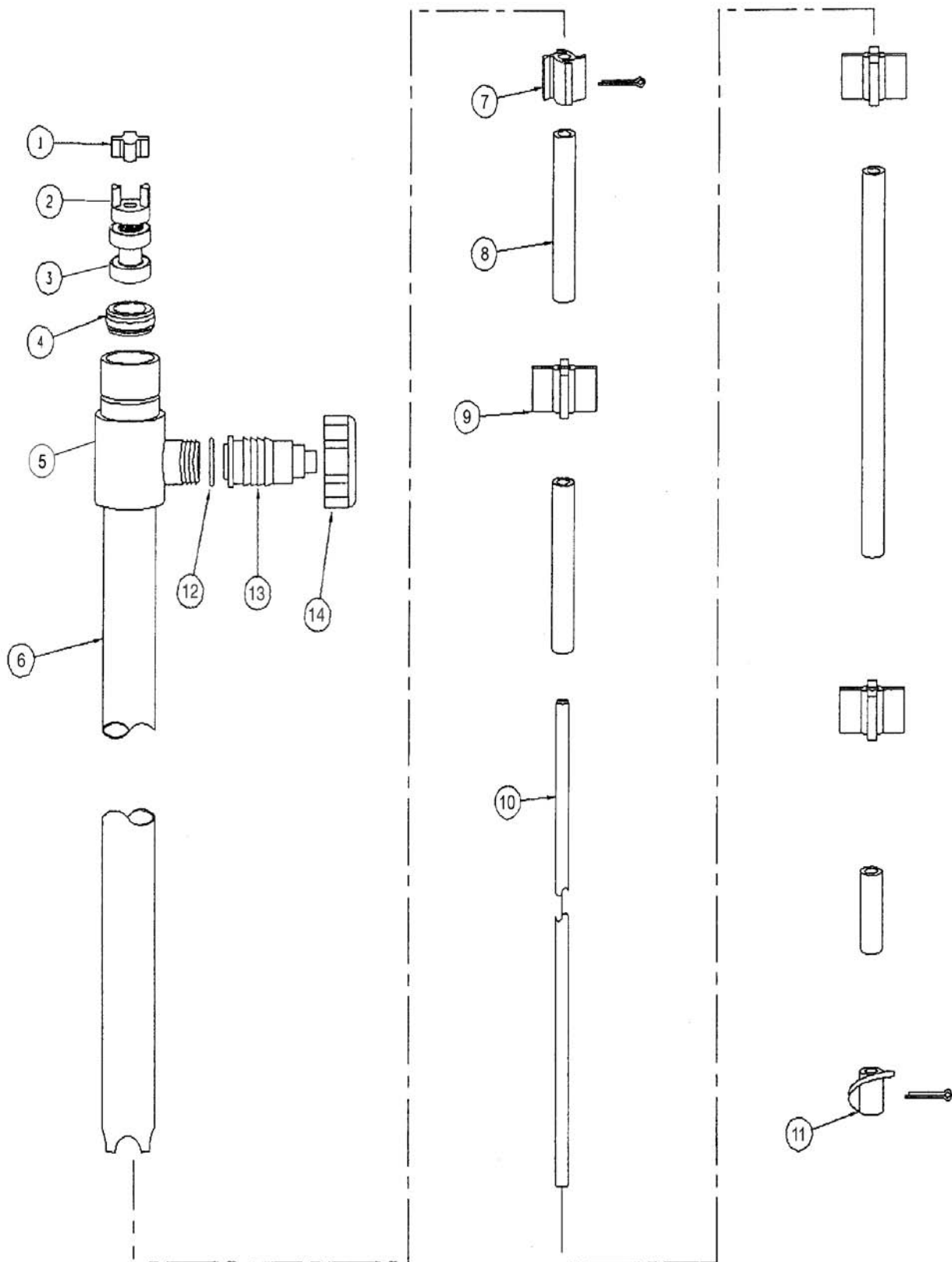
1. Visually inspect the compressor (item 11), and the 3 center bearings (item 9) for wear or damage. Replace as needed.
2. Inspect the bearing assembly (item 3) for rust, corrosion, or tightness. Replace as needed.
3. Inspect the pump shaft in the seal area for wear and replace as needed.

Reassembly

1. Install the intake tube (item 6) into the pump head (item 5) by threading it counterclockwise (left hand threads).
2. Insert the pump shaft assembly up through the bottom of the intake tube until the threaded part of the shaft sticks out slightly from the pump head.
3. Thread the sleeve part of the installation tools onto the threaded end of the pump shaft (item 10).
4. Warm up the seal assembly (item 4) with a heat lamp or by soaking it in hot water to aid in the installation process.
5. Insert the pusher part of the installation tool into the slotted side of the seal. Slide the seal over the sleeve and onto the shaft so that the lip in the center of the seal is facing the bottom of the pump. Push the seal just past the end of the sleeve onto the shaft.
6. Remove the sleeve from the end of the pump shaft and thread on the bearing assembly. Carefully press the bearing assembly into the pump head, until the top of the bearings are flush with the top of the pump head.
7. Turn the coupling half to verify there is no binding inside the pump.

Note: Repair instructions can be downloaded from our web site at www.finishthompson.com or contact Technical Service at 1-800-888-3743.

TBP SPARE PARTS EXPLODED VIEW



SPARE PARTS LIST

ITEM	QTY	DESCRIPTION	PART NUMBER
1	1	COUPLING INSERT	
			J100014
2	1	COUPLING HALF	
			J100012
3*	1	BEARING ASSEMBLY	
		W/ ROLL PIN	A101110
4*	1	SEAL ASSEMBLY	
		PTFE	A103186
5	1	PUMP HEAD	
		PURE PVDF	M102222
6	1	INTAKE TUBE ASSEMBLY	
		27" PURE POLYPROPYLENE	M102221-1
		40" PURE POLYPROPYLENE	M102221-2
		48" PURE POLYPROPYLENE	M102221-3
7	1	IMPELLER ASSEMBLY	
		PTFE WITH ALLOY 625 PIN	A103190
8	1	SPACER SET	
		27" PURE POLYPROPYLENE	A103189-1
		40" PURE POLYPROPYLENE	A103189-2
		48" PURE POLYPROPYLENE	A103189-3
9	2	CENTER BEARING	
		PTFE	M100039-1
10	1	SHAFT	
		27" ALLOY 625	M102219-1
		40" ALLOY 625	M102219-2
		48" ALLOY 625	M102219-3
11	1	COMPRESSOR	
		PTFE WITH ALLOY 625 PIN	A103191
12	1	DISCHARGE O-RING	
		FKM	J100991
13	1	SPOUT	
		1" BARBED PURE PVDF	106753
14	1	DISCHARGE NUT	
		PURE PVDF	M101610-2

*Recommended Spare Parts



FINISH THOMPSON INC.

Service 1-800-888-3743
P/N 108100 REV. 2, 3-5-13